



 **Homebox**





Construction
guarantee*



Fixed price
guarantee**



Up to 90%
less building
waste



New Zealand
Made



Homebox is helping to solve New Zealand’s greatest property challenges with high quality affordable housing delivered in as little as 12 weeks.

Homebox offers both turn-key and customisable homes that are healthy, sustainably made and will stand the test of time.

A true asset, your Homebox is made to be re-purposed, moved and enjoyed for years to come.



Speed

5 week construction guarantee¹.
12 week turn-key solution for off-the-shelf Homebox .



Ease

No-stress build, consenting and delivery. Homebox can take care of it all.
Low maintenance living through high quality construction and materials, all selected for New Zealand conditions.

Finished water tight before leaving factory

Self supported structure - opens all options for DIY customisation

Designed to exceed Homestar 6 specifications



Comfort

Warm and quiet with high levels of insulation, including double glazing throughout.
Designed to meet high Homestar specifications.



Quality

10 year construction and product warranties.
Strong steel construction designed and made in New Zealand.
Designed for very high wind conditions.

Ideal for future modular additions and customisation

Customisation partners provide limitless possibilities to add new spaces and design your perfect home



Affordability

Low cost and fixed price guarantee reduces financing barriers.



Sustainable

Up to 90% less waste than traditional building methods and made with very low water use.
Made in New Zealand with locally sourced materials.

Lift and move! Design to be relocated and re-used or sold

Suitable for difficult sites or hard to access locations

Homebox Abode

The Homebox Abode is your architecturally designed, true turn-key home.

Designed for both beauty and durability, the Abode is ready to transform your life with kitchen, bathroom, insulation and entry decking included.

The Abode makes the perfect small home, office, Airbnb, workers accommodation or bach.

Features

30m² (3.4m x 9.0m)

Turn-key ease with consenting and installation managed for you

Architecturally designed

Modern kitchen and bathroom

Bathroom with gas continuous hot water

Heat pump optional

Double glazed and insulated to exceed the New Zealand Building Code

Open plan living

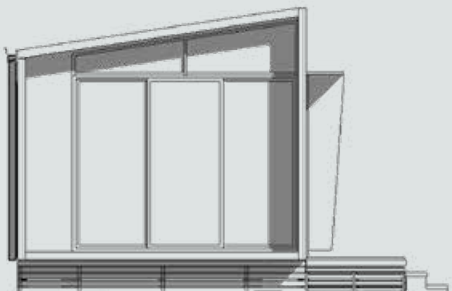
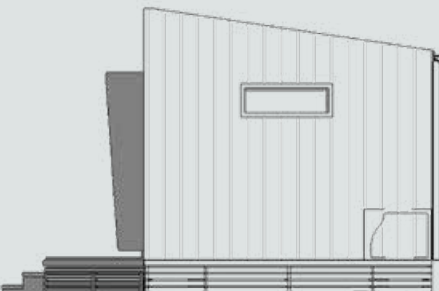
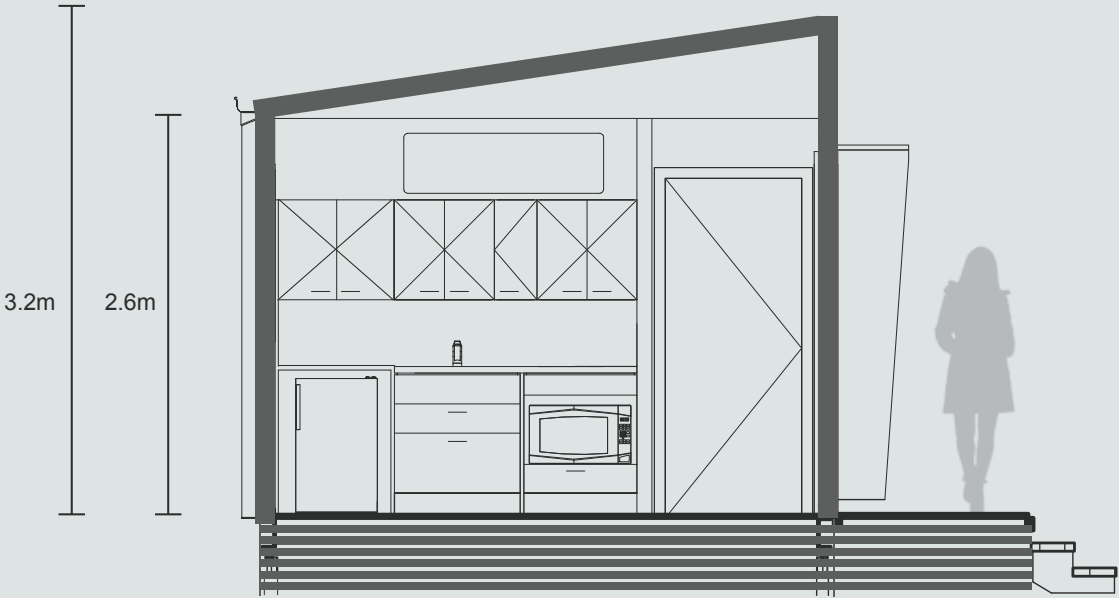
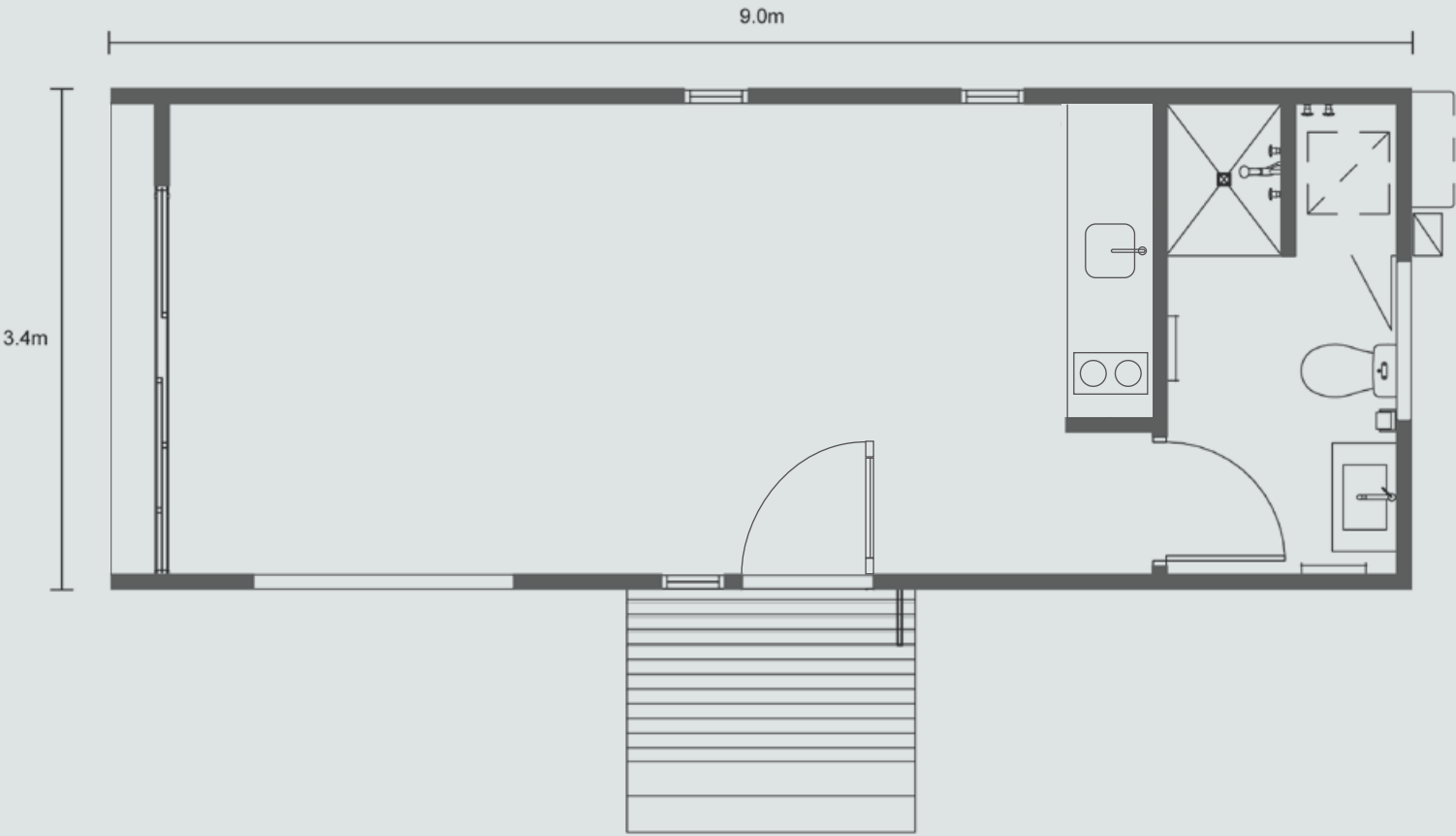
Long lasting, low maintenance aluminium cladding







Homebox Abode



Homebox Abode

Exterior finishes and options

- 1. Cladding and roofing: Solar Rib Diamond. Colour options: Gull Grey, Grey Friars, Black
- 2. Sunhood: Powdercoated aluminium, burnt orange.
- 3. Cladding feature: Hermpac shiplap, Yellow Cedar
- 4. Joinery: Aluminium powdercoated, Grey Friars. Double glazed.
- 5. Undercroft slatscreen: H3.2 treated timber, painted. Site fitted optional extra.
- Chassis/structure: Structural Steel ,Heavy Gage – MIPA Coating System -Black
- Framing: 90mm 0.95 BMT roof and 0.75 walls – Light guage steel
- Insulation: Walls: Pink batts R2.6, Ceiling and floors: Pink batts R3.2, Windows and doors: Double glazed
- Underfloor: 20mm Plywood floor sheeting



Options

Exterior cladding colour



Grey Friars Gull grey Black

Exterior cladding profile



Coloursteel Corrugated Coloursteel Solar Rib Diamond



Interior finishes and options

- 1. Ceiling: Natural Plywood clear coat finished or Plasterboard paint finished white.
- 2. Walls: Natural Plywood clear coat finished or Plasterboard paint finished white.
- 3. Flooring: Avvio LVT from Godfrey Hirst Longboard vinyl, BATIK
- 4. Cabinetry: Dark grey laminex
- 5. Kitchen: Benchtop: white stone, Splashback: glass.
- 6. Tapware: matt black
- 7. Appliances: Bosch/Fisher & Paykel or equivalent.
- Bathroom door: Painted Dulux Dandelion yellow or Gull grey
- Lighting: LED warm white
- Hot water system: Rinnai gas continuous hot water system
- Heating: Heat pump

Options

Interior door colour



Dandelion yellow Gull grey

Homebox Lite

(No Building Consent required*)

Homebox Lite is the ultimate blank canvas ready to customise for your dream space.

The Lite comes watertight and finished with Plywood interior paneling, allowing you to save costs and finish to your vision and budget.

The Lite is ideal for the DIY and makes the perfect first home, home extension, sleep-out or office.

Features

30m² (3.4 x 9.0m)

DIY ready for customisation

Fully enclosed and built to meet New Zealand building standards

Plywood interior – provided natural – keep or finish to your style

Pre wired with LED down lights, light switches, power sockets and power fuse board

Warm and quiet with full insulation and double glazing throughout

Indoor-outdoor flow ready with large sliding doors

Supplied with product warranties and engineers producer statements

*Homebox Lite falls under exempt building work guidance 2-3, single storey detached buildings up to 30m².



Easily transported, Homebox makes the perfect bach in those out-of-the-way spots

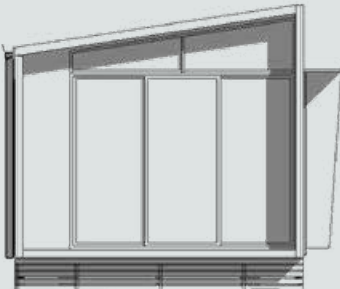
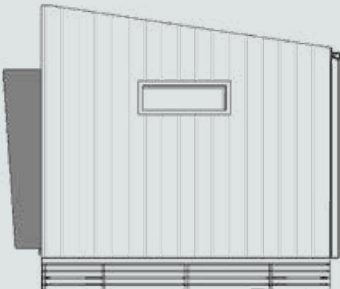
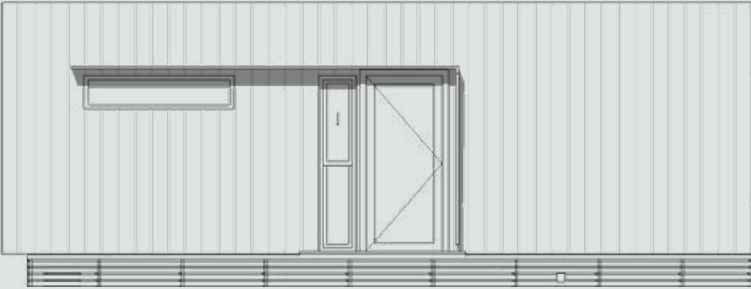
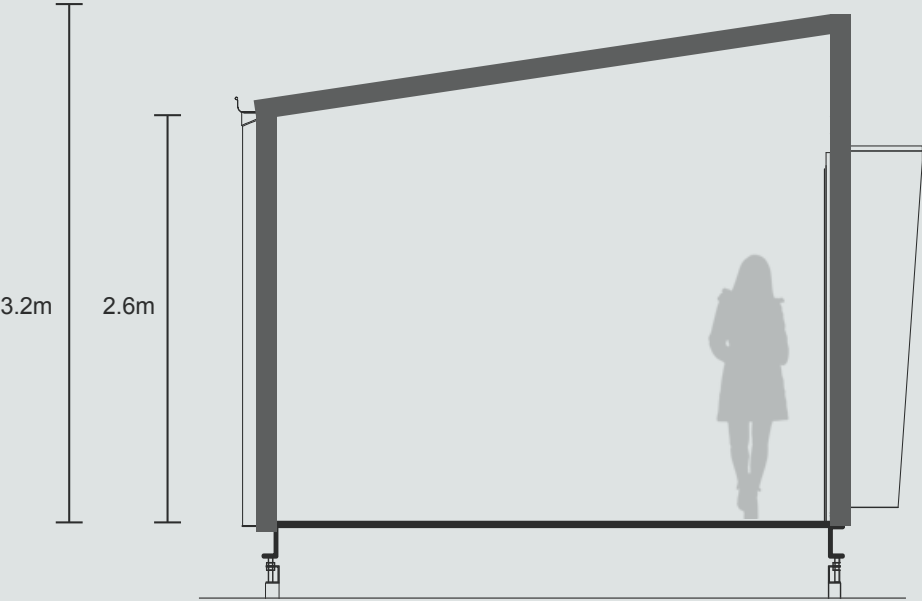
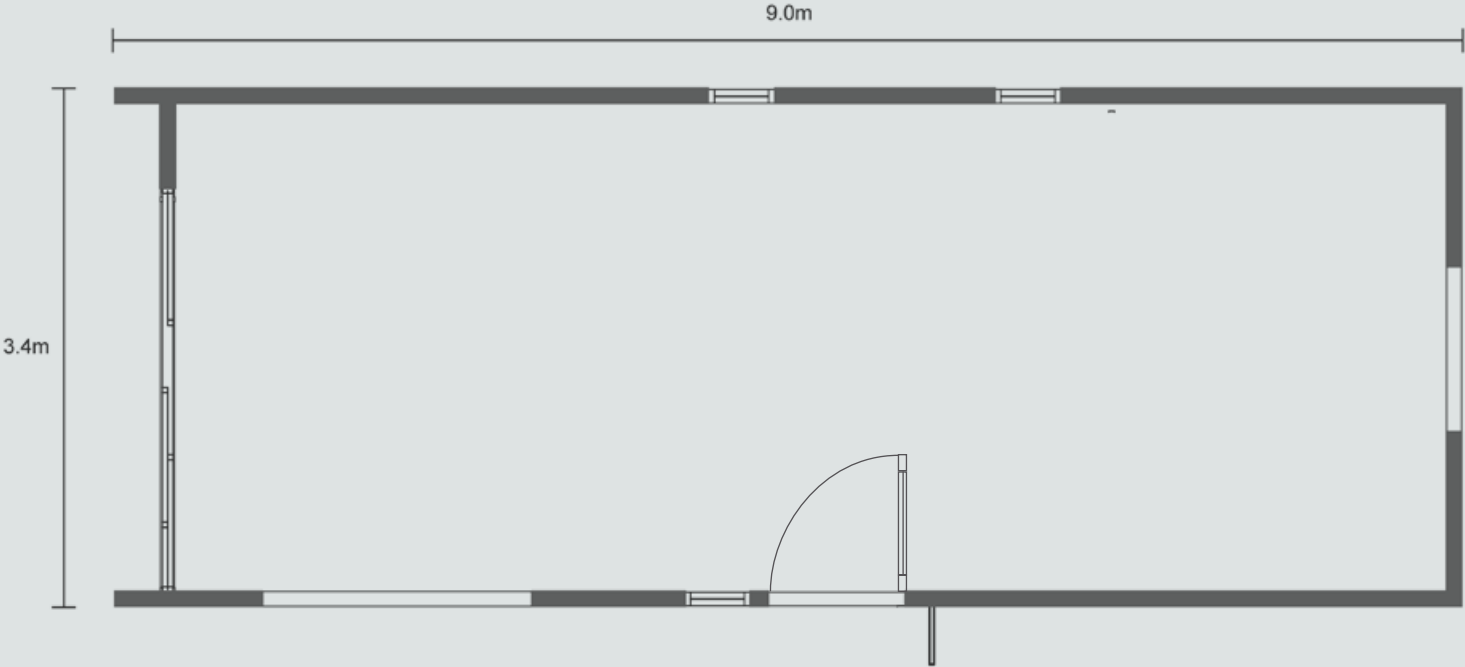


Customise to your heart's content – finishes shown not included





Homebox Lite



Homebox Lite

Exterior finishes and options

- 1. Cladding and roofing: Solar rib diamond. Colour options: Gull Grey, Grey Friars or Black
- 2. Sunhood: Powdercoated aluminium, burnt orange.
- 3. Cladding feature: Hermpac shiplap, Yellow Cedar
- 4. Joinery: Aluminium powdercoated, Grey Friars. Double glazed.
- Chassis/structure: Engineered Steel frame, Black
- Framing: Light guage steel, 90mm
- Insulation: Walls: Pink batts R2.6, Ceiling and floors: Pink batts R3.2, Windows and doors: Double glazed
- Underfloor: 20mm Plywood floor sheeting



Options

Exterior cladding colour



Grey Friars Gull grey Black

Exterior cladding profile



Coloursteel Corrugated Coloursteel Solar Rib Diamond



Interior finishes

- 1. Ceiling: Natural Plywood
- 2. Lighting: LED downlights, standard wall mounted light switches
- 3. Walls: Natural Plywood. No finish or coating applied– left in raw state with fixing screws exposed.
- 4. Flooring: Natural Plywood
- Wall mounted power sockets. Fuse board included

The Homebox process – Abode



Project information and site requirements

A Homebox Project Manager will talk to you about what you are wanting and gather information about the site.

A client checklist with preferred suppliers is provided. Choose to be hands-on with the process or engage an architect to complete the process on your behalf. Homebox can recommend several architects that can help.

Fees may apply.

Time: 1 week



Confirmation of order



We will prepare a plan, a list of specifications that are included with your Homebox, and a quote for you to approve.

Through your checklist you can confirm soil conditions.

A Geotech report, topographical survey and building consent is then submitted to your local council.

Time: 2–4 weeks



Build



You or your chosen architect/ project manager arranges geo-tech report and creates piling design.

Your Homebox begins construction. We guarantee a 5 week construction timeframe from build contract sign-off.

Piling & service connection work starts onsite – via either selected project manager or via the checklist provided.

Time: 4–5 weeks



Delivery & installation



Your Homebox is transported to your site and fixed to piles. Transport is supplied via one of Niche’s approved suppliers or you may choose your own transport company to collect from our Petone factory.

Site connection is completed by your selected trades.

Homebox provides you with warranties & certificates.

Time: 1 week



Compliance



A final building inspection is undertaken by your local council representative, providing you with a completed Code of Compliance.

Two building consents issued: 1. factory consent from works completed there, 2. local council consent to service connections (including all warranties, certificates and Engineers Producer statement).

Start enjoying your Homebox!

Time: 1 week

Build consent required (drainage & bathroom)

FAQ'S

Does Homebox have a show home?

We have a show home / display Homebox under construction at our parent company, Niche Modular. We are located at 8 Burnham Street, Lower Hutt. You are welcome to view by appointment. Email: enquiries@nichemodular.co.nz.

Does Homebox offer a turn key solution?

You can either project manage yourself using our checklist of preferred suppliers, or work with one of our architect/design partners who can run the project for you (additional fees may apply as you consult directly with these firms).

Are Homebox homes registered builders?

Yes! We have a highly skilled team of registered licensed building practitioners. Along side our builders, we have a team of registered architects, plumbers, electricians, roofers, & finishing specialists.

Do I need consent?

Under the Building Act there are exceptions for kit-set/modular style buildings that are 30sqm or less in size with no plumbing or cooking facilities- Homebox Lite falls under exempt building work guidance and DOES NOT require a consent. The Abode DOES require a consent given the plumbing, drainage and cooking areas. We suggest you consult your local council and seek advice in regards to these requirements.

With the engagement of one of our partnered designers/architecture firms, any subsequent consents can be organised on your behalf.

Is a deposit required?

Once the manufacturing contract is signed to start building your home a 30% deposit is required.

So how does the purchase options work- I want one!

Option 1 - self management
If you wish to purchase the Homebox, and want to freight, consent and install yourself then we can supply an ex-factory price- you then arrange for collection from our Petone factory.

Option 2 - Turn-key
If you wish for the project to be run for you, then one of our preferred architects/designs can prepare all of the documents required, and project manage the install of your new Homebox on your behalf.

Where can you transport?

We transport throughout New Zealand. We can provide assistance from the beginning in regards to possible access requirements and feasibility of different sites.

How long does it take?

The factory build time is only 4-5 weeks from signed contract & specifications. We guarantee 5 weeks, along with a guaranteed price at time of signing the contract.

Build consent timings can vary by council. Typically you can expect consent approval 4-6 weeks from lodging.

We recommend allowing 1 week for delivery and site preparation Installation. Variation is typically based on site preparation requirements and weather.

FAQ'S

Does Homebox cater to high wind zone, snow loading, & coastal areas?

Homebox is designed to meet some of New Zealand's harshest conditions, with a 'very high' engineered wind zone and high quality materials that suit coastal locations. Please consult with either your council or project designer to check wind zones and sea spray zones.

How is Homebox connected to power & plumbing services?

The Homebox Abode is connected to your existing services on site including storm water, grey water and power. Prior to delivery existing services are checked for suitability.

HomeBox Lite is not supplied with plumbing to services.

All Homebox options are supplied with downlights, wall mounted power sockets and mains power fuse board. A certified electrician can provide on-site connection.

All Homeboxes, where applicable, come with a Certificate of Compliance for plumbing and electrical.

What site preparation is required?

Site preparation will vary depending on the individual site characteristics.

Your designer or project manager will work with you to understand your requirements and organise any work needed.

Homebox uses an engineered pile system such as Surefoot that minimises environmental impact, time and site mess. Homebox manages this for you.

Is Homebox suitable for sloping sites?

Yes! Your Homebox can be installed on almost any site.

Sloping sites may require higher foundation costs due to the depth and height of your foundations. If your Homebox sits above 1.2m off the ground at decking locations, you will be required to have a balustrade to meet building code.

Additionally, if your Homebox sits above 3m off the ground, you would need a structural engineer to review the building & foundation plans for bracing.

Does Homebox offer off-grid solutions?

We welcome customisation of your Homebox for off-grid use.

Solar panels, rain water tanks, battery storage and off-grid septic systems can all be arranged with the help of Homebox project managers and partners.

What heating & cooling options are available?

Homebox Abode comes complete with a high efficiency heat pump and is fully insulated to help moderate temperature.

Homebox Lite does not come standard with heating. Heating or cooling options can be arranged independently or through a Homebox trusted partner.

Hot water supply

The Homebox Abode comes with a gas continuous Rinnai hot water system. This uses a small portable gas bottle, or you can connect to mains gas should you wish.

Who is Niche?

Niche Group (which includes Niche Modular Construction), is the parent company behind Homebox. Homebox is made in the Niche Modular Construction factory in Lower Hutt with the same specialists, proven processes and equipment used on commercial projects throughout the country.





Homebox environmental commitment

Homebox is committed to the protection of our environment

Homebox is committed to researching and implementing innovative ways to reduce our impact on the earth. We ensure that all the activities we carry out consider our environment with an aim to prevent pollution and reduce environmental harm.

How does this commitment come to life?

Our factory-controlled process allows us to recycle materials, control inventory and safely store our building materials, generating up to 90% less waste than traditional building methods. The unique factory processes also result in very little water usage.

The steel used for Homebox buildings is 100% recyclable for both the light gauge steel and construction steel. A strong recycling system is in place in the factory

for all materials. Steel has considerable durability and strength. The entire building can be re-purposed/recycled at a future date up to 50 years.

Steel does not require chemical treatments as timber does, instead using coating systems that do not provide residue after rain or environmental leaching over periods of time. Termites and pests are not attracted to steel therefore these are not a problem.

Soil disturbance is minimal with installation on-site. Generally, ground works can be minimised by using screw piles or propriety foundation products which are less intrusive on-site. In turn, after the lifespan of the building is completed, the site can be left as it was with little effort.

MEMBER
2020–2021



Contact us
021 574 175
enquires@nichemodular.co.nz



*Construction time guarantee upon confirmation of manufacturing and deposit paid. **Fixed price from confirmation of manufacturing and deposit receipt. **All images are artist's impression.**

Floor plans and materials subject to change- this brochure and illustrations do not form part of the construction contract. Please refer to the detailed specifications and plans within the contract pack, available on request.

Homebox is a
Niche Modular product

