

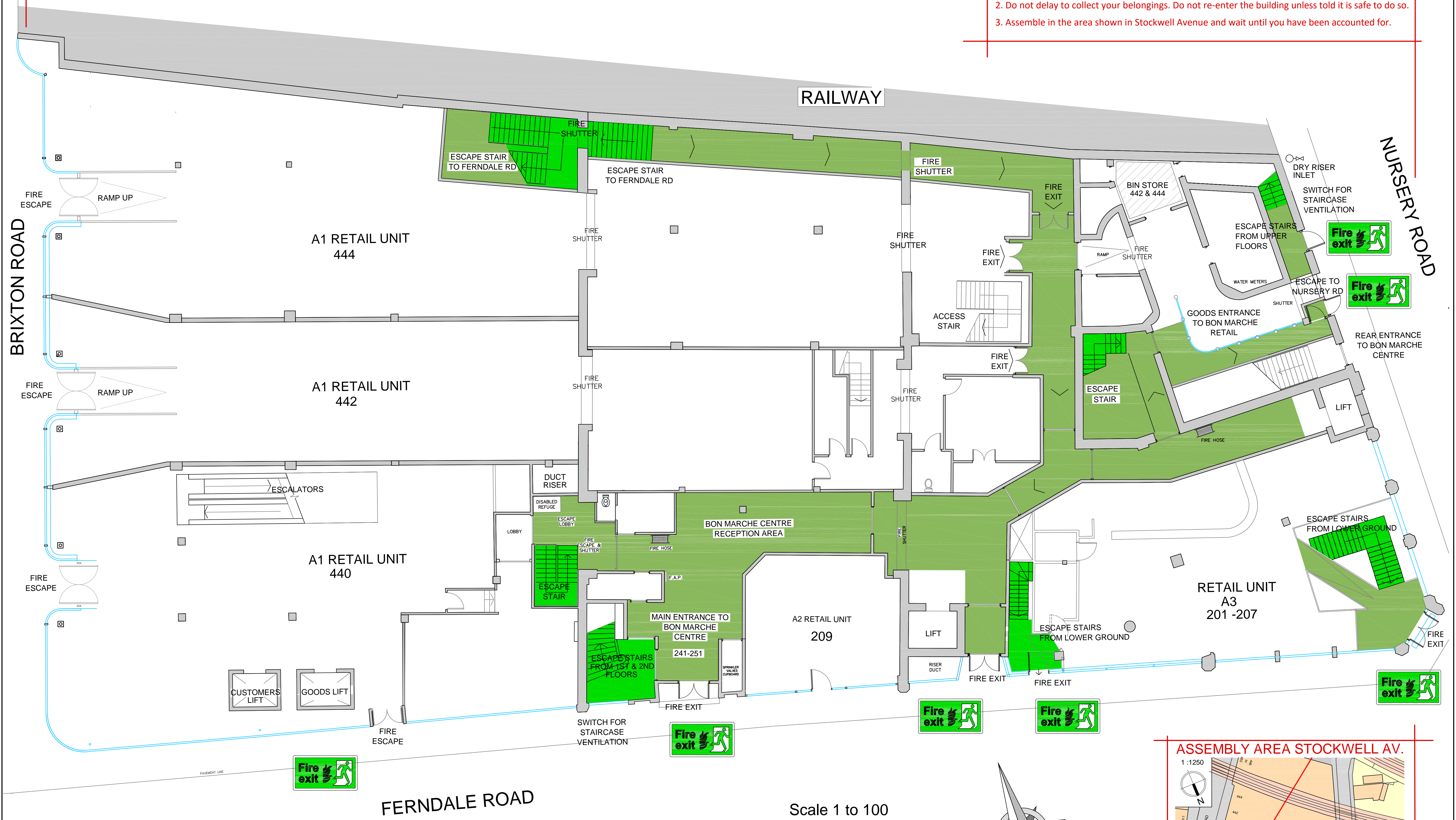
Fire Escape Plan - Ground Floor

If you discover a fire

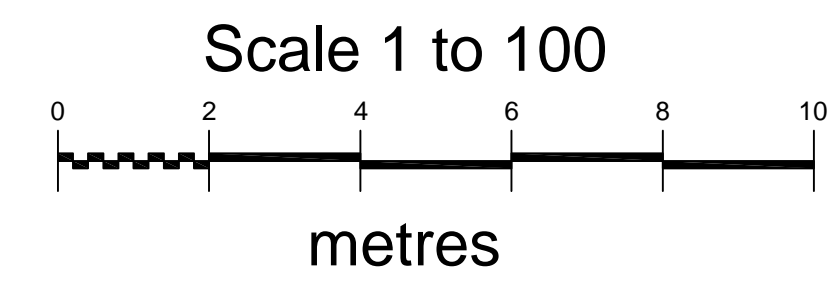
1. Operate the nearest fire alarm (red "break-glass" boxes on walls).

If you hear a continuous fire alarm

1. Leave building by the quickest route, using the stairs as shown on the plan, do not use the lifts.
2. Do not delay to collect your belongings. Do not re-enter the building unless told it is safe to do so.
3. Assemble in the area shown in Stockwell Avenue and wait until you have been accounted for.



FERNDALE ROAD



ASSEMBLY AREA STOCKWELL AV.

