

# Push-in Connectors

600V | Spring-action Clamp Type for Copper-Clad Aluminum (CCA)



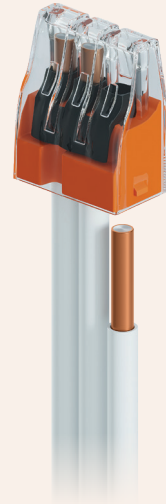
## Engineering Specifications:

- **Standards:** Listed to UL STD 486C; Certified by UL to CSA STD C22.2 #188 for Cu to Cu
- **Listings:** UL: E546947
- **Identification and Usage:**

Listed for use as a spring-action clamp type wire connector on the following solid and/or stranded: Copper (CU) to Copper (CU) or Copper-Clad Aluminum (CC) to Copper-Clad Aluminum (CC) or Copper (CU) to Copper-Clad Aluminum (CC). Suitable for use with Copperweld® CCA Building Wire.

- **Wire Combinations:**

- 12-10 AWG Sol CC (U.S. only)
- 16-10 AWG Sol CU
- 12-10 AWG Str CU
- 18-10 AWG Str CU, Tinned



Packaging*	Packaging Quantity*	Color	Part Number**
Plastic Bag	250	Red	CWLD863-RED-250
Barrel	11,000	Red	CWLD863-RED-11000

\* Packaging: Other packaging and denomination options are available on request.

\*\* Part Number Legend: [Model #]-[Color]-[Quantity]



CW-SPEC-BW-PUSHIN-V002-03.2026 | ©2026 Copperweld Bimetallics, LLC. All rights reserved.  
Copperweld® and Copperweld Building Wire® are a registered trademarks of Copperweld Bimetallics, LLC.



615-377-4200

buildingwire@copperweld.com