

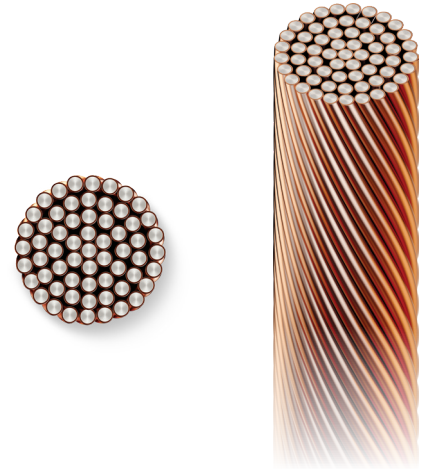
# ArcAngel<sup>®</sup> 52

## Copper-Clad Steel (CCS) Grounding Conductor

PART #: CWAA52

### Engineering Specifications:

- **Strands** – 61
- **Composition** – Grade 40 DSA (steel core)
- **Finish** – Bare
- **Standards** – IEEE Std-80, IEEE Std-837 EMF



Current Carrying Capabilities*	Up to 100 ms (6 Cycles)	Up to 250 ms (15 Cycles)	Up to 500 ms (30 Cycles)	Up to 1.0 s (60 Cycles)	Up to 3.0 s (180 Cycles)	Thermal Energy (I <sup>2</sup> T)
Short Time Fusing Limit	111.7 kA	72.7 kA	52.0 kA	37.0 kA	21.5 kA	1,352

Specifications	Imperial	Metric
Strand Diameter	0.0752 in	1.91 mm
Nom. Overall Diameter	0.677 in	17.19 mm
Area	345.0 kcmil	174.8 mm <sup>2</sup>
Weight	987 lb/kft	1,468 kg/km
Max. Wire Resistance	0.0798 Ω/kft	0.0243 Ω/km
Min. Break Load	13,725 lbf	6,226 kgf

\* Short circuit current (kA) values are based on IEEE 80:2013, Table 6 (RMS currents, 60 Hz, X/R = 0). Fusing temps at 1084 °C. ArcAngel products exceed industry performance standards due to design, materials, and improved thermal characteristics. All current carrying capabilities for ArcAngel products are reflected in commercially available industry standard software programs for substation and transmission line designs. Contact your local sales representative for details.



Copperweld bimetals have been processed in the USA for over 100 years. We use the world's highest-quality steel and oxygen-free copper to provide superior protection and unmatched durability.



615-377-4200  
powergrid@copperweld.com