

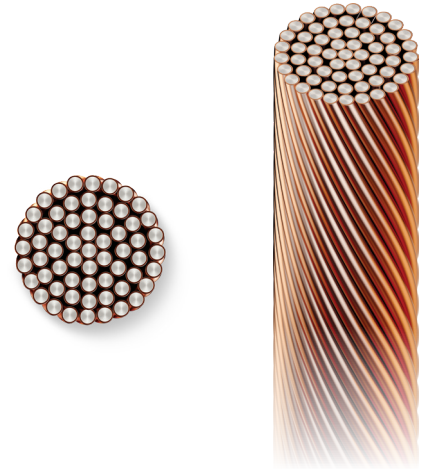
ArcAngel® 101

Copper-Clad Steel (CCS) Grounding Conductor

PART #: CWAA101

Engineering Specifications:

- **Strands** – 61
- **Composition** – Grade 40 DSA (steel core)
- **Finish** – Bare
- **Standards** – IEEE Std-80, IEEE Std-837 EMF



Current Carrying Capabilities*	Up to 100 ms (6 Cycles)	Up to 250 ms (15 Cycles)	Up to 500 ms (30 Cycles)	Up to 1.0 s (60 Cycles)	Up to 3.0 s (180 Cycles)	Thermal Energy (I ² T)
Short Time Fusing Limit	213.0 kA	139.9 kA	101.0 kA	72.2 kA	42.0 kA	5,101

Specifications	Imperial	Metric
Strand Diameter	0.1045 in	2.65 mm
Nom. Overall Diameter	0.941 in	23.89 mm
Area	667.0 kcmil	338.0 mm ²
Weight	1,905 lb/kft	2,835 kg/km
Max. Wire Resistance	0.0417 Ω/kft	0.0127 Ω/km
Min. Break Load	25,089 lbf	11,380 kgf

* Short circuit current (kA) values are based on IEEE 80:2013, Table 6 (RMS currents, 60 Hz, X/R = 0). Fusing temps at 1084 °C. ArcAngel products exceed industry performance standards due to design, materials, and improved thermal characteristics. All current carrying capabilities for ArcAngel products are reflected in commercially available industry standard software programs for substation and transmission line designs. Contact your local sales representative for details.



Copperweld bimetals have been processed in the USA for over 100 years. We use the world's highest-quality steel and oxygen-free copper to provide superior protection and unmatched durability.



615-377-4200
powergrid@copperweld.com