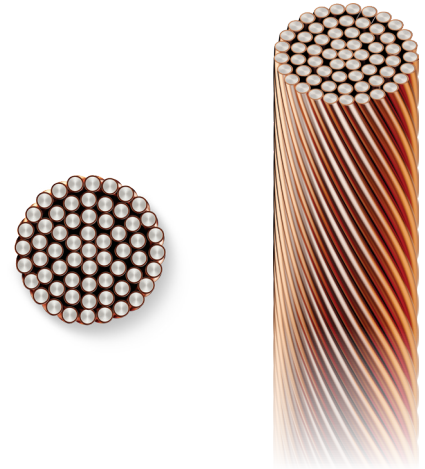


# ArcAngel<sup>®</sup> 44

## Copper-Clad Steel (CCS) Grounding Conductor

**PART #: CWAA44**



### Engineering Specifications:

- **Strands** – 61
- **Composition** – Grade 40 DSA (steel core)
- **Finish** – Bare
- **Standards** – IEEE Std-80, IEEE Std-837 EMF

Current Carrying Capabilities*	Up to 100 ms (6 Cycles)	Up to 250 ms (15 Cycles)	Up to 500 ms (30 Cycles)	Up to 1.0 s (60 Cycles)	Up to 3.0 s (180 Cycles)	Thermal Energy (I <sup>2</sup> T)
Short Time Fusing Limit	95.0 kA	61.6 kA	44.0 kA	31.2 kA	18.2 kA	968

Specifications	Imperial	Metric
Strand Diameter	0.0689 in	1.75 mm
Nom. Overall Diameter	0.620 in	15.75 mm
Area	290.0 kcmil	146.9 mm <sup>2</sup>
Weight	828 lb/kft	1,232 kg/km
Max. Wire Resistance	0.0951 Ω/kft	0.0290 Ω/km
Min. Break Load	10,541 lbf	4,781 kgf

\* Short circuit current (kA) values are based on IEEE 80:2013, Table 6 (RMS currents, 60 Hz, X/R = 0). Fusing temps at 1084 °C. ArcAngel products exceed industry performance standards due to design, materials, and improved thermal characteristics. All current carrying capabilities for ArcAngel products are reflected in commercially available industry standard software programs for substation and transmission line designs. Contact your local sales representative for details.



Copperweld bimetals have been processed in the USA for over 100 years. We use the world's highest-quality steel and oxygen-free copper to provide superior protection and unmatched durability.



615-377-4200  
powergrid@copperweld.com