

# MBS

Architectural

## Product Catalogue

Turn the pages to browse our extensive product range. Our focus on design, flexibility, and performance allows for customisation to suit various project needs, ensuring both aesthetic appeal and functional excellence.



## Inspired by Quality. Driven by Innovation.

### Architectural Ceiling & Wall Systems

Great design is in the detail, and the details are our speciality. We offer the broadest range of premium products from a single source. Our proprietary systems provide the platform for your unique design, giving you complete freedom and customisation to create truly stunning projects.

- / Design
- / Sourcing Products
- / Project Support
- / Acoustic Solutions
- / Seismic
- / Sustainable

## Design Led. Solutions Driven.

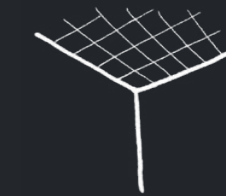
We understand the pursuit for excellence, the boldness to push the boundaries of what is possible in design and the drive to create something that is truly unique to your project.

Share your vision with us and let us partner with you on your design journey as we use our 25+ years' experience in bespoke feature ceiling design to assist with the little things that turn good design to great design; the integration of services, transitioning and the small detailing that makes a big difference.



#### Aluminium

Flexible, fire compliant aluminium batten solutions for every design.



#### Mineral Fibre

Acoustic mineral fibre ceiling tile solutions for all budgets.



#### Metal

Easy to detail suspended metal ceiling systems for a premium finish.



#### Wood Wool

Unconventional and creative, sustainable acoustic ceiling solutions.



#### Timber

Bring warmth into your design with timber battens and timber cladding.



#### Acoustic Solutions

Function is just as essential as form; bringing acoustic expertise to projects.

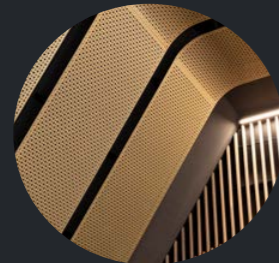
# Explore Materiality.



Apollo+ Aluminium Battens



Apollo Timber Battens



Metal Ceiling Systems



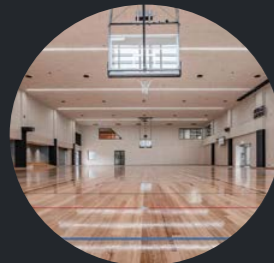
Open Cell Ceilings



Expanded Mesh Ceilings



Timber Linings



Heradesign Wood Wool Panels



Timber & Ply Panelling



Mineral Fibre Ceilings

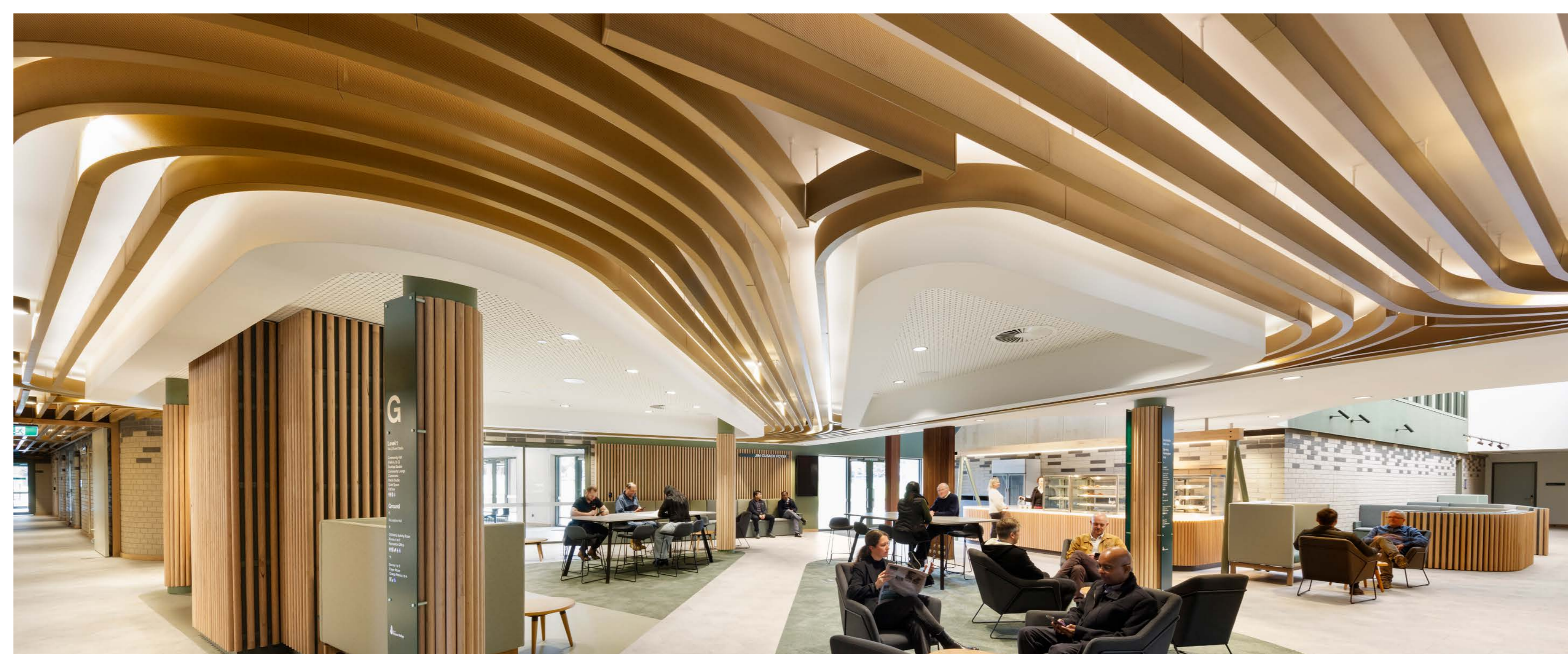


Bespoke Ceiling Design



# Contents.

Introduction.....	2-3
Materiality.....	4
Contents.....	5
Architectural Products.....	6-7
Apollo+ Aluminium Battens.....	8-9
Apollo+ Aluminium Two Piece Battens.....	10-11
Apollo Timber Battens.....	12-13
Apollo Timber Linings.....	14-15
Apollo+ Aluminium Soffit.....	16-17
Apollo+ Screens.....	18-19
Apollo+ Quickclad.....	20-21
Apollo eMineral.....	22-23
Apollo Wood Wool.....	24-25
SAS International Metal Pan.....	26-29
Expanded Metal Mesh.....	30-31
Metal Open Cell.....	32-33
Timber Open Cell.....	34-35
ACS.....	36-37
Keystone Linings.....	38-39
Autex.....	40-41
Bespoke Design.....	42-43
Building Products.....	44-45
Studco.....	46-47
EZ Concept.....	48-49
Kingspan.....	50-51
Insulation.....	52-53
Explore Projects.....	54-55
Contact.....	56-57

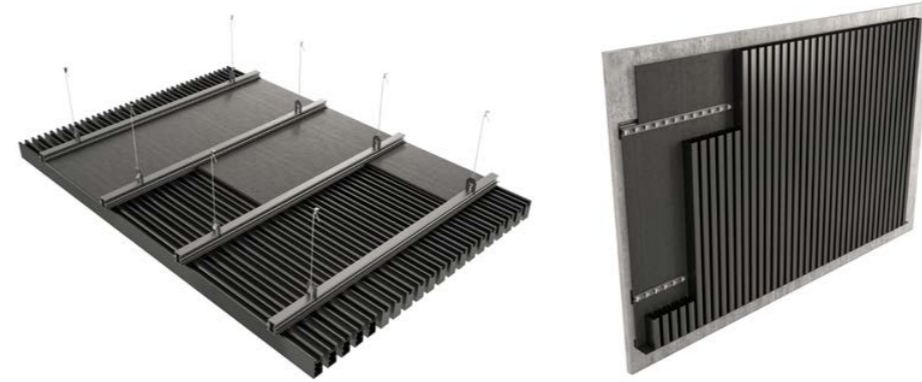


# Architectural Products

## Aluminium Batten Systems

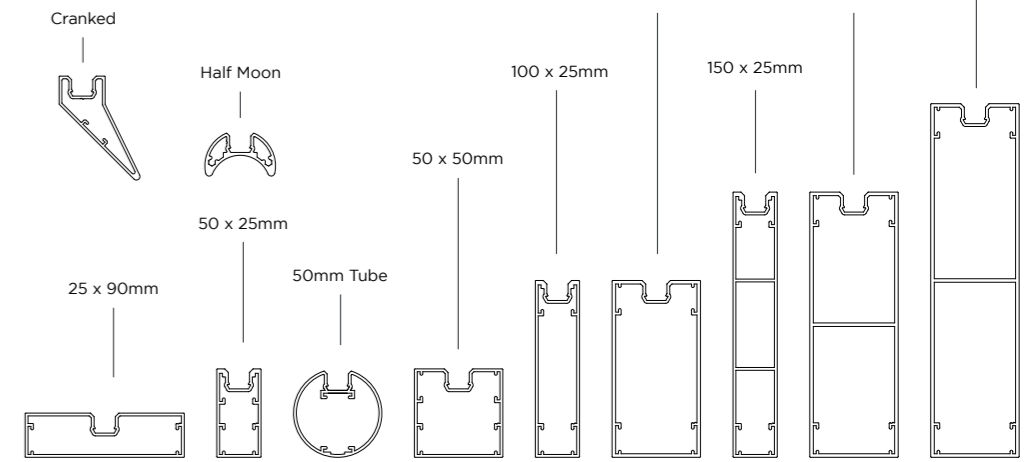
### Ceiling & Wall Applications

The batten range comprises 11 profile shapes. Designs can mix and match these profiles. Your Apollo+ Aluminium Batten feature could consist of one profile repeated throughout or a mix and match of the various shapes to add depth and texture to your linear design.



### Profiles

Standard batten sizes:



### Finishes

The batten range can be customised to suit your project requirements. Battens are available in 11 standard Timber Effect powder coat finishes, with additional Timber Effect powder coat options available upon request.

Anodised finishes are also achievable.

Battens are available in Interpon and Dulux's full range of powder coat colours. Contact the MBS team to discuss your options.

Please note: Some colours incur an additional charge and minimum order quantities may apply to some colours.



## Apollo+ Aluminium Battens

The Apollo+ Aluminium Batten Ceiling comprises of innovative design and traditional construction methodology to bring you high quality, versatile and Australian made linear ceilings.

- Apollo+ = 50% reduction in carbon footprint
- Group 1 Fire Performance
- Concealed click-in support
- Acoustic performance NRC 0.55 (up to NRC 0.90)
- Standard 6.0m lengths (custom lengths available upon request)
- Flexible design
- Various batten sizes & shapes
- Australian design & manufacture

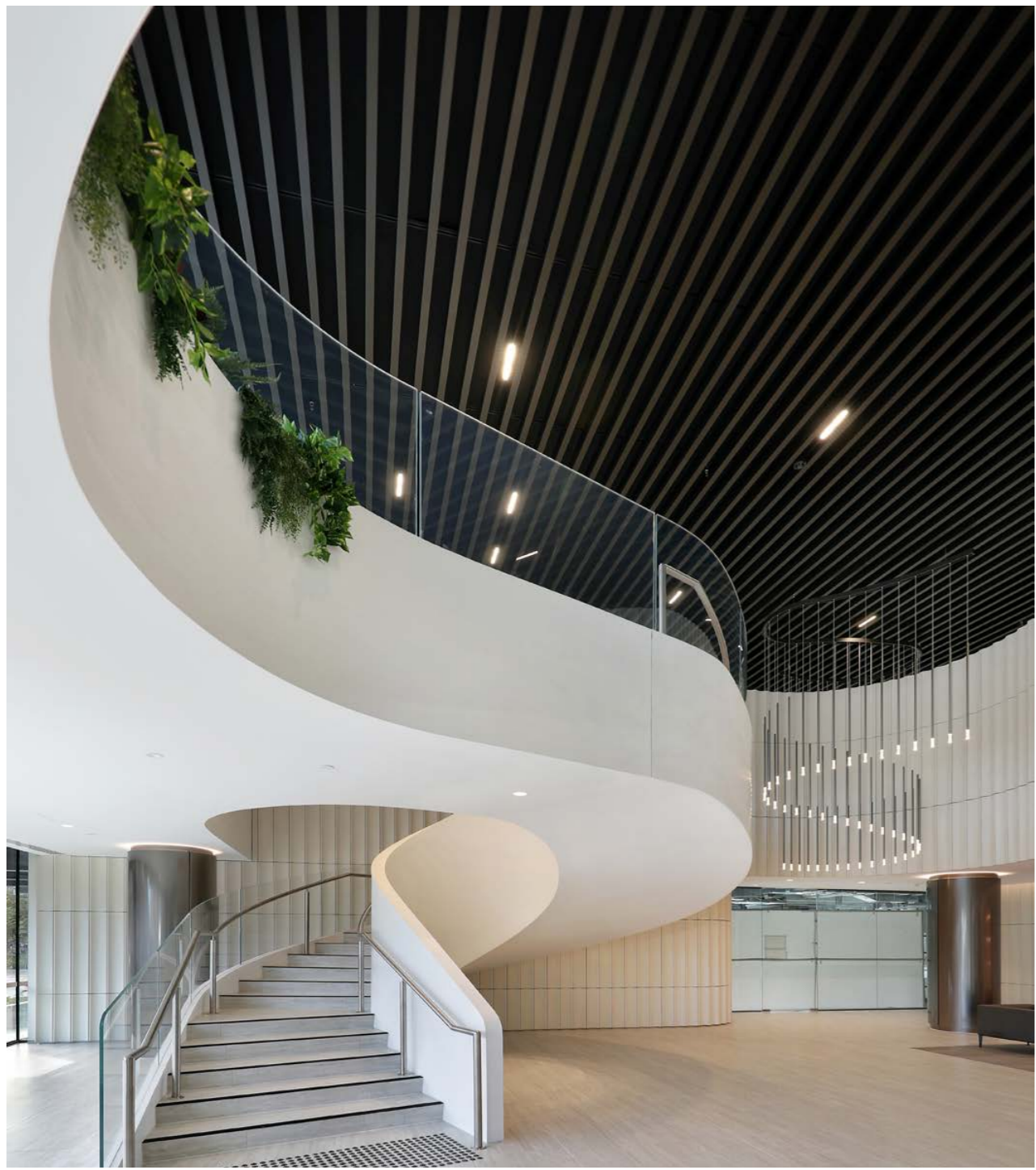
ALUMINIUM

CONCEALED CLICK-IN SUPPORT

BATTENS

TIMBER & PPC FINISH

ACOUSTICS



## Aluminium Two Piece Batten Systems

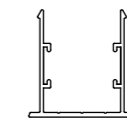
### Ceiling & Wall Applications

The batten range comprises 4 standard profile shapes. Designs can mix and match these profiles. Your Apollo+ Aluminium Batten feature could consist of one profile repeated throughout or a mix and match of the various shapes to add depth and texture to your linear design.

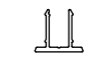


### Profiles

Standard batten sizes:  
Profile dimensions listed are depth by width.

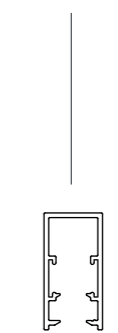


Base Plate  
Suits 50mm wide profiles

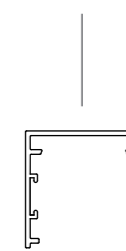


Base Plate  
Suits 25mm wide profiles

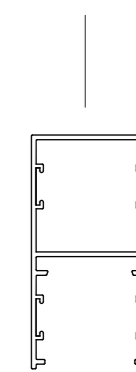
50 x 25mm  
Cover Plate



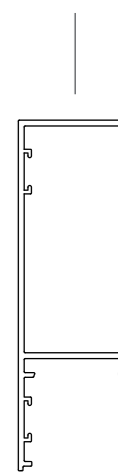
50 x 50mm  
Cover Plate



100 x 50mm  
Cover Plate



150 x 50mm  
Cover Plate



## Apollo+ Aluminium Two Piece Battens

The Apollo+ Aluminium Two Piece batten system is designed to be a highly customisable, durable, and easy to install linear batten solution for external applications.

- Apollo+ = 50% reduction in carbon footprint
- Group 1 Fire Performance
- Non-combustible - AS 1530
- Concealed fixings
- Standard 6.0m lengths (custom lengths available upon request)
- Flexible design
- Matching end caps available
- Various batten sizes & shapes
- Australian design & manufacture

ALUMINIUM

CONCEALED CLICK-IN SUPPORT

TWO PIECE BATTENS

TIMBER & PPC FINISH

EXTERNAL

### Finishes

The batten range can be customised to suit your project requirements. Battens are available in 11 standard Timber Effect powder coat finishes, with additional Timber Effect powder coat options available upon request.

Anodised finishes are also achievable.

Battens are available in Interpon and Dulux's full range of powder coat colours. Contact the MBS team to discuss your options.

Please note: Some colours incur an additional charge and minimum order quantities may apply to some colours.



BIRCHWOOD



NORDIC WHITE OAK



EUROPEAN SPRUCE



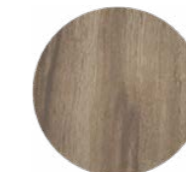
NATURAL ASH



SCARLET OAK



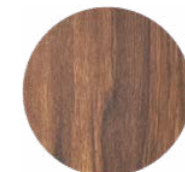
BLONDE OAK



AMBER OAK



LIGHT OAK



SPOTTED GUM



MAHOGNAY



BLACK ASH



PPC



### Apollo Timber Battens

The Apollo Timber Batten system's modular nature is highly customisable, allowing it to adapt to your project-specific requirements. This gives you creative freedom to design a stunning linear feature that is unique to your project.

- Group 3 Fire Performance (Option for Group 1)
- Concealed click-in support
- Acoustic performance NRC 0.55 (up to NRC 0.90)
- Random lengths (set lengths upon request)
- Flexible design
- Prefinished Coatings available
- Various batten sizes & shapes
- Australian design & manufacture

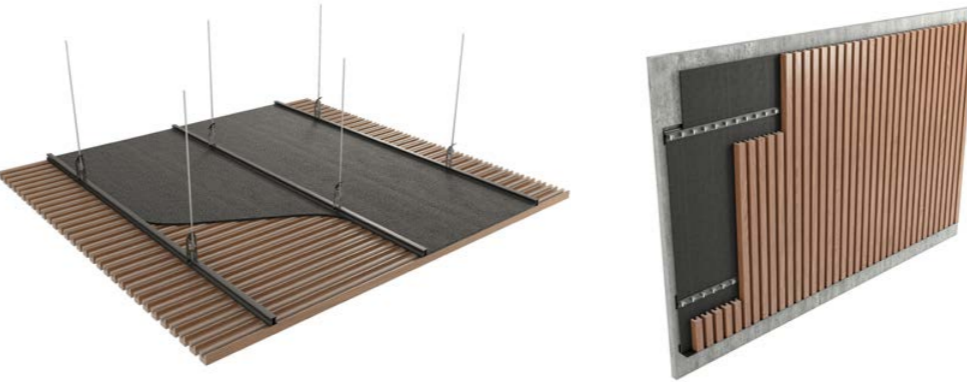
TIMBER CONCEALED CLICK-IN SUPPORT BATTENS

VARIOUS TIMBER SPECIES ACOUSTICS

### Timber Batten Systems

#### Ceiling & Wall Applications

The batten range comprises 17 profile shapes. Designs can mix and match these profiles. Your Apollo Timber Batten feature could consist of one profile repeated throughout or a mix and match of the various shapes to add depth and texture to your linear design.



#### Species

Timber species selection is a critical part of the design process.

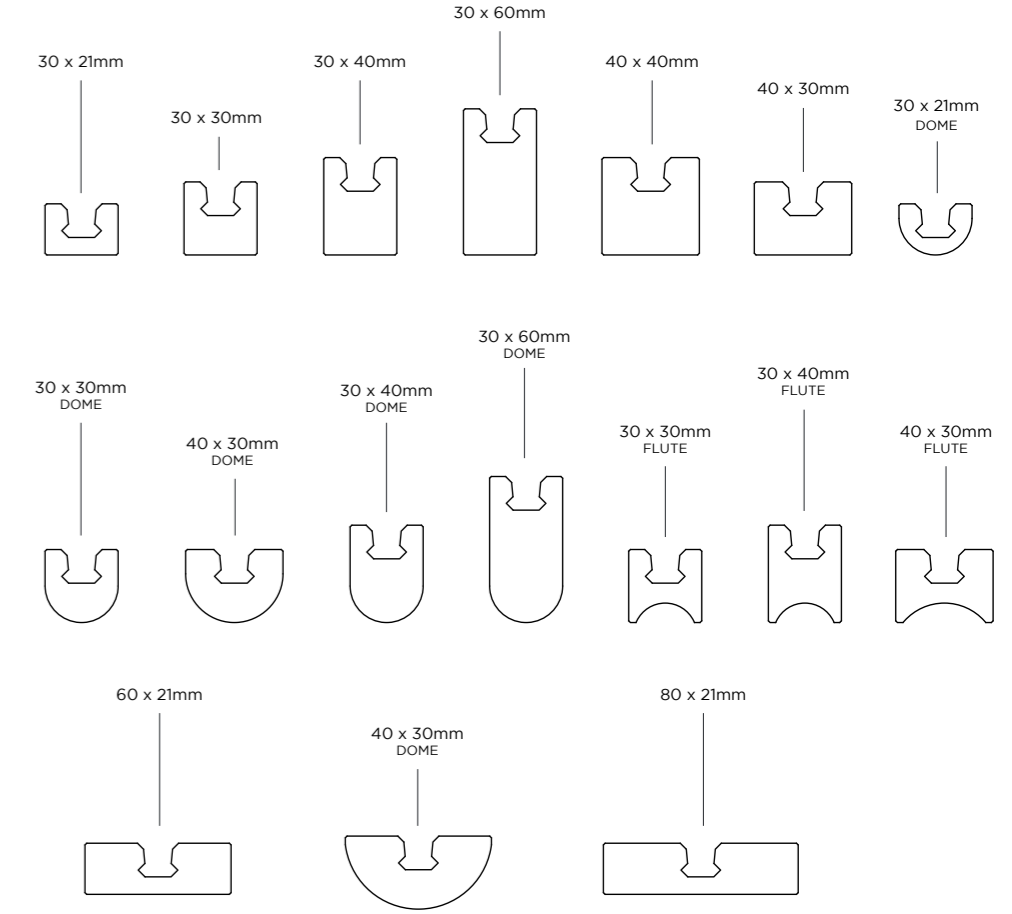
Each timber species offers building designers with unique visual appeal, colour, grain patterns, durability, and availability.

The selection of a Timber Species makes a big different in the overall look and feel of a space.



#### Profiles

Standard batten sizes:  
(Profile dimensions listed are width by depth)





### Apollo Timber Linings

Elevate your space with Apollo Timber Linings — premium wood paneling that adds a sleek, professional finish with lasting durability. Designed for easy installation and built to withstand high-traffic areas, our panels bring warmth and sophistication to commercial, education, fit-out and retail environments.

- Suitable for ceiling & wall applications
- Concealed fixing & face fixing options
- Pre-finished coatings available
- Different timber species available upon request

TIMBER CONCEALED FIXINGS PANELS

VARIOUS TIMBER SPECIES

### Timber Linings

#### Ceiling & Wall Applications

The Timber Linings range comprises of 6 profile shapes. Designs can mix and match these profiles. Your Apollo Timber Linings could consist of one profile repeated throughout or a mix and match of the various shapes to add depth and texture.



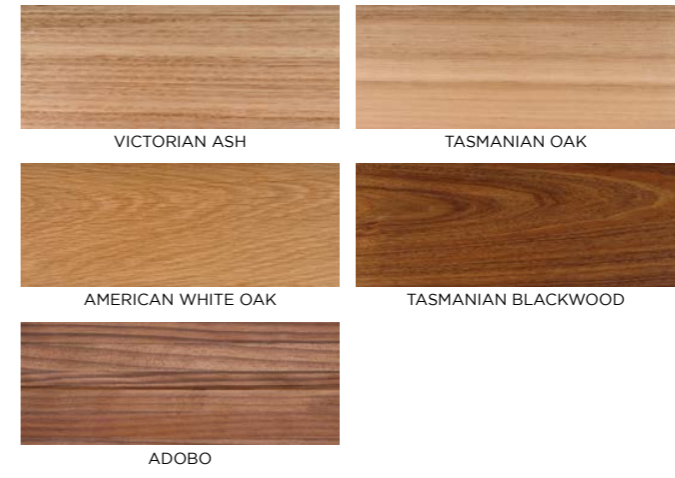
Ceiling Application

Double Valley

#### Species

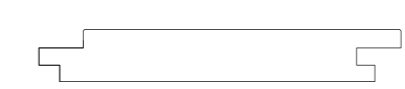
Timber species selection is a critical part of the design process. Each timber species offers building designers with unique visual appeal, colour, grain patterns, durability, and availability.

The selection of a Timber Species makes a big different in the overall look and feel of a space.

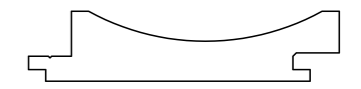


#### Profiles

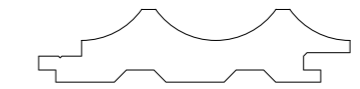
Standard boards:



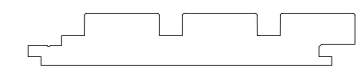
Tongue & Groove  
Size: 122 x 19mm



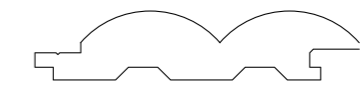
Valley  
Size: 78 x 21mm



Double Valley  
Size: 78 x 21mm



Blocky  
Size: 114 x 21mm



Double Round  
Size: 76 x 19mm



VJ Lining Board  
Size: 87 x 12mm

## Soffit System

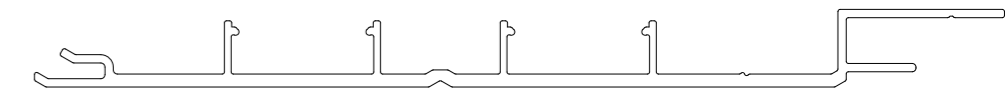
### Application

The Apollo+ Soffit range comprises 1 standard profile shape - 156mm cover - 78mm (wide) V groove profile x 15mm (deep)



### Profile

Standard profile size:  
156mm (wide) x 15mm (deep)  
78mm (v-groove)



Standard joining detail:  
2 No. profiles



## Apollo+ Aluminium Soffit

The Apollo+ Soffit System combines well-thought-out design with high-quality, authentic Timber Effect finishes. Each option is meticulously chosen for its realism and warmth, meeting Group 1 Fire standards for both safety and style. Ideal for those seeking a sophisticated and compliant design solution, this dynamic soffit cladding system enriches any architectural project.

- Non-combustible - AS 1530
- Concealed fixings
- Standard 6.0m lengths
- Flexible design
- Australian design & manufacture

ALUMINIUM CONCEALED CLICK-IN SUPPORT SOFFIT APPLICATION

TIMBER & PPC FINISH EXTERNAL

### Finishes

The soffit range can be customised to suit your project requirements. Profile is available in 11 standard Timber Effect powder coat finishes, with additional Timber Effect powder coat options available upon request.

Anodised finishes are also achievable.

Profile is available in Interpon and Dulux's full range of powder coat colours. Contact the MBS team to discuss your options.

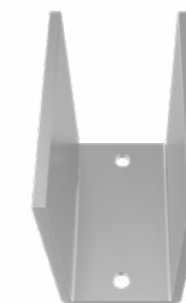
Please note: Some colours incur an additional charge and minimum order quantities may apply to some colours.



## Aluminium Screen Systems

### Wall Applications

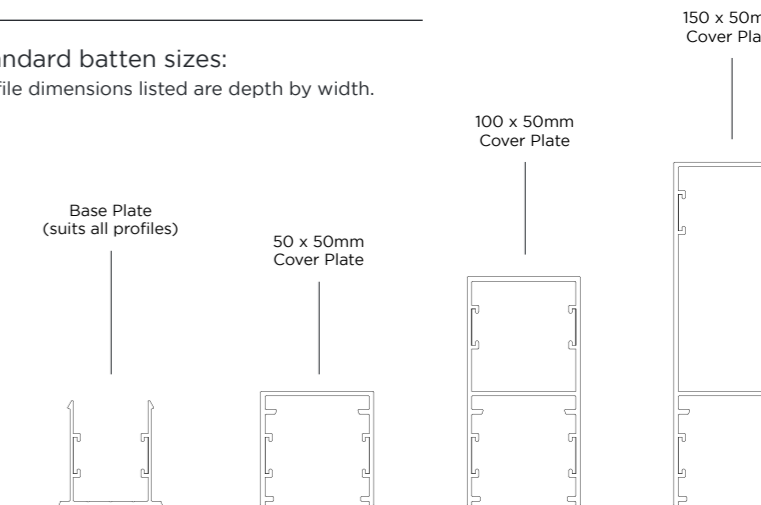
The Apollo+ Screen range comprises 3 standard profile shapes. Designs can mix and match these profiles. Your Apollo+ Screening could consist of one profile repeated throughout or a mix and match of the various shapes to add depth and texture to your linear design.



Proprietary Screening Bracket

### Profiles

Standard batten sizes:  
Profile dimensions listed are depth by width.



## Apollo+ Screens

Apollo+ Aluminium Screening System is a blend of premium materials and versatile design. This innovative system transforms spaces with stunning floor-to-ceiling applications, delivering both aesthetic appeal and functional excellence.

- Group 1 Fire Performance
- Non-combustible
- Concealed fixings
- Standard 6.0m lengths (custom lengths available upon request)
- Flexible design
- Various batten sizes & shapes
- Australian design & manufacture

ALUMINIUM CONCEALED CLICK-IN SUPPORT WALL APPLICATION

TIMBER & PPC FINISH INTERNAL

### Finishes

The screen range can be customised to suit your project requirements. Battens are available in 11 standard Timber Effect powder coat finishes, with additional Timber Effect powder coat options available upon request.

Anodised finishes are also achievable.

Battens are available in Interpon and Dulux's full range of powder coat colours. Contact the MBS team to discuss your options.

Please note: Some colours incur an additional charge and minimum order quantities may apply to some colours.





## Apollo+ Quickclad

Transform your garage into a statement piece of sophistication. Designed for premium homes that are looking to impress on arrival, these doors seamlessly blend style and functionality, offering a contemporary look that enhances not only your home's street appeal, but the value of your asset.

- Non-combustible - AS 1530
- Concealed fixings
- Standard 6.0m lengths (custom lengths available upon request)
- Flexible design
- Matching end caps available
- Various batten sizes & shapes
- Australian design & manufacture

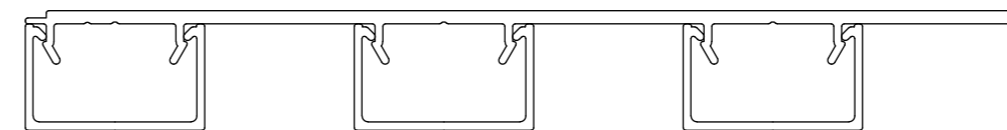
ALUMINIUM	CONCEALED CLICK-IN SUPPORT	WALL APPLICATION
GARAGE DOOR APPLICATION	TIMBER & PPC FINISH	EXTERNAL

## Aluminium Quickclad

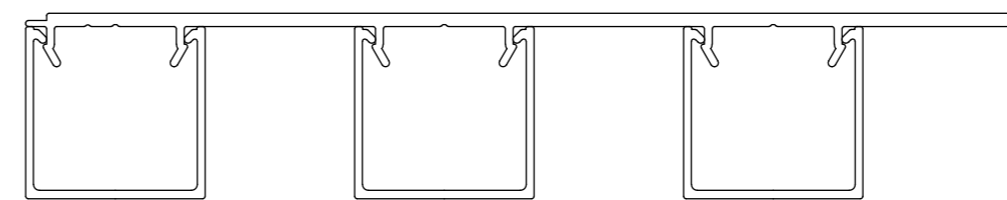
### Applications

The Apollo+ Quickclad system is crafted with precision, featuring 3 different batten sizes, to suit any home and provide a sleek and modern design that complements any architectural style. The clean lines and refined finish create an upscale look that sets your home apart.

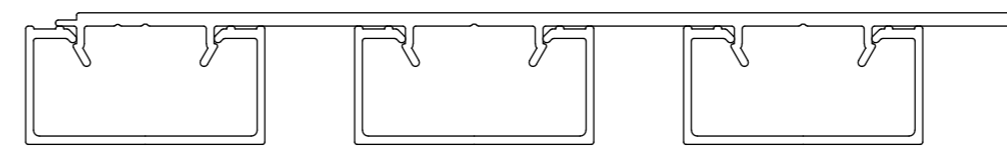
#### 18 x 30mm batten @ 55mm centres



#### 29 x 30mm batten @ 55mm centres



#### 20 x 40mm batten @ 55mm centres



### Finishes

The Quickclad range can be customised to suit your project requirements. Battens are available in 11 standard Timber Effect powder coat finishes, with additional Timber Effect powder coat options available upon request.

Anodised finishes are also achievable.

Battens are available in Interpon and Dulux's full range of powder coat colours. Contact the MBS team to discuss your options.




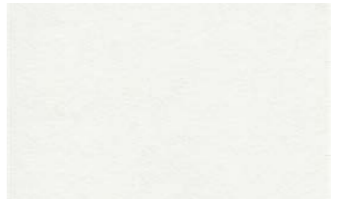
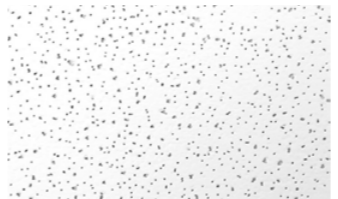



Please note: Some colours incur an additional charge and minimum order quantities may apply to some colours.



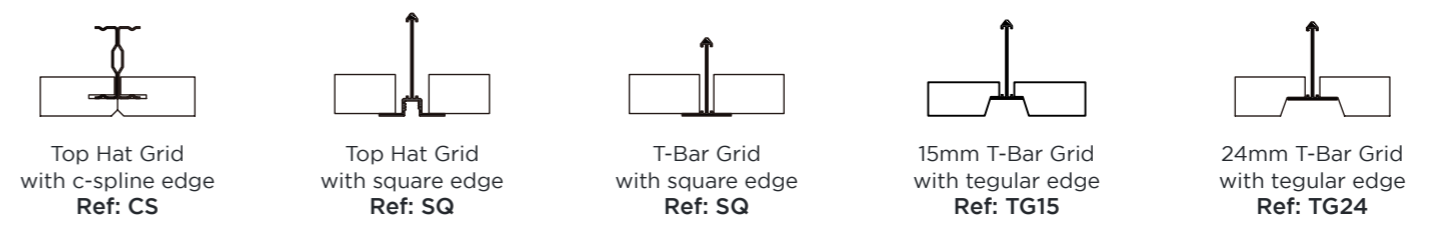
## Mineral Fibre Ceilings

### Ceiling Systems

Sizes available: 1200 x 600mm, 600 x 600mm, 1200 x 300mm, 1200 x 400mm, 1500 x 300mm

			
<b>Summit NRC+</b> 19mm NRC 0.85 / CAC 35	<b>Summit</b> 19mm NRC 0.7 / CAC 40	<b>Medishield</b> 19mm NRC 0.70 / CAC 40	<b>Elegant</b> 20mm NRC 0.85 / CAC 26
			
<b>Stellar / Stellar NRC+</b> 15mm NRC 0.6 / CAC 35 19mm NRC 0.70 / CAC 40	<b>Astrid / Astrid NRC+</b> 15mm NRC 0.60 / CAC 35 19mm NRC 0.70 / CAC 40	<b>Sirocco Pinhole</b> 15mm NRC 0.60	<b>Cleanshield</b> 15mm NRC 0.65 / CAC 35 19mm NRC 0.90 / CAC 40

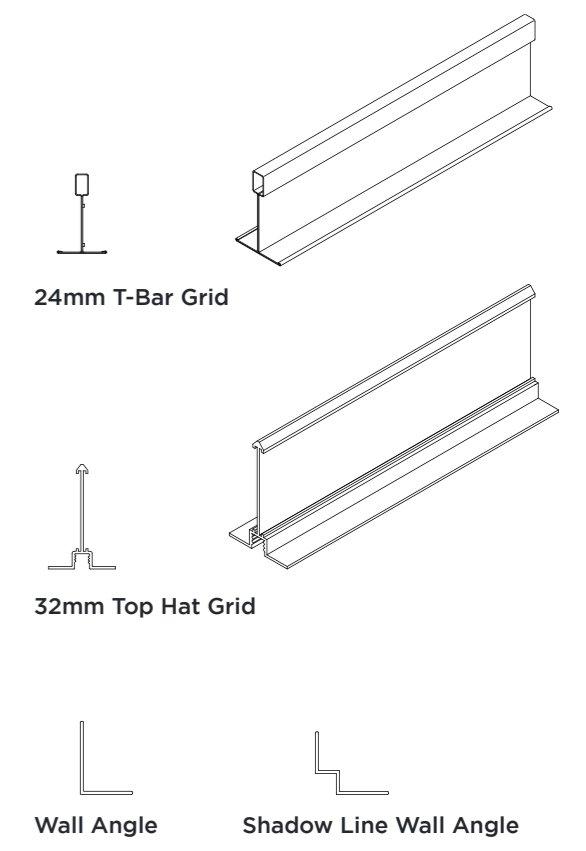
### Edge Details



### Grid Systems & Perimeter Trims

The suspension systems are either a two way exposed 24mm T-Bar Grid, and a two way exposed 32mm Top Hat Grid, specifically designed for plank tiles.

For seismic details - contact MBS.



## Apollo eMineral

Apollo eMineral is a high-performance mineral fibre ceiling solution designed to deliver superior acoustics, fire performance, and durability for almost all sectors. With a sleek aesthetic it combines functionality and style to meet modern architectural demands.

- Group 1 Fire Rating
- Certified Biosoluble (Note Q)
- Asbestos-free
- Recycled Content
- Warranty 25 year

MINERAL FIBRE      ACOUSTICS



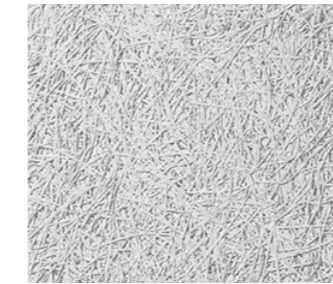
## Wood Wool Ceilings

### Ceiling Systems

Made from high-quality wood wool, Apollo panels are durable, versatile, and perfect for a wide range of commercial applications. Whether enhancing acoustics in offices, schools, or public spaces, Apollo offers a stylish, functional way to improve sound quality while adding a distinctive natural aesthetic to any interior.



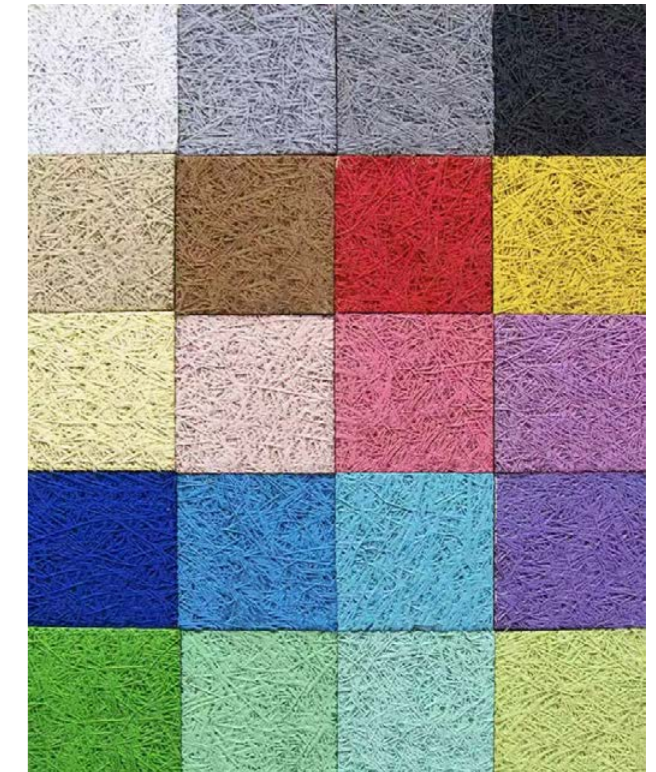
Natural



White



Black



Colours Available



Lay In - Exposed Grid



Direct Fix - Bevel Edge

## Apollo Wood Wool

Wood Wool panels are magnesite bonded panels and tiles designed for high sustainability, high impact resistance & good sound absorption. Heradesign panels are available in a range of textures, sizes & colours providing design flexibility.

- Fire Performance – Group 1
- Acoustic Ratings – Up to NRC 0.90
- Green Star + Cradle to Cradle
- Impact Resistant
- 1mm Fibre or 2mm Fibre Options

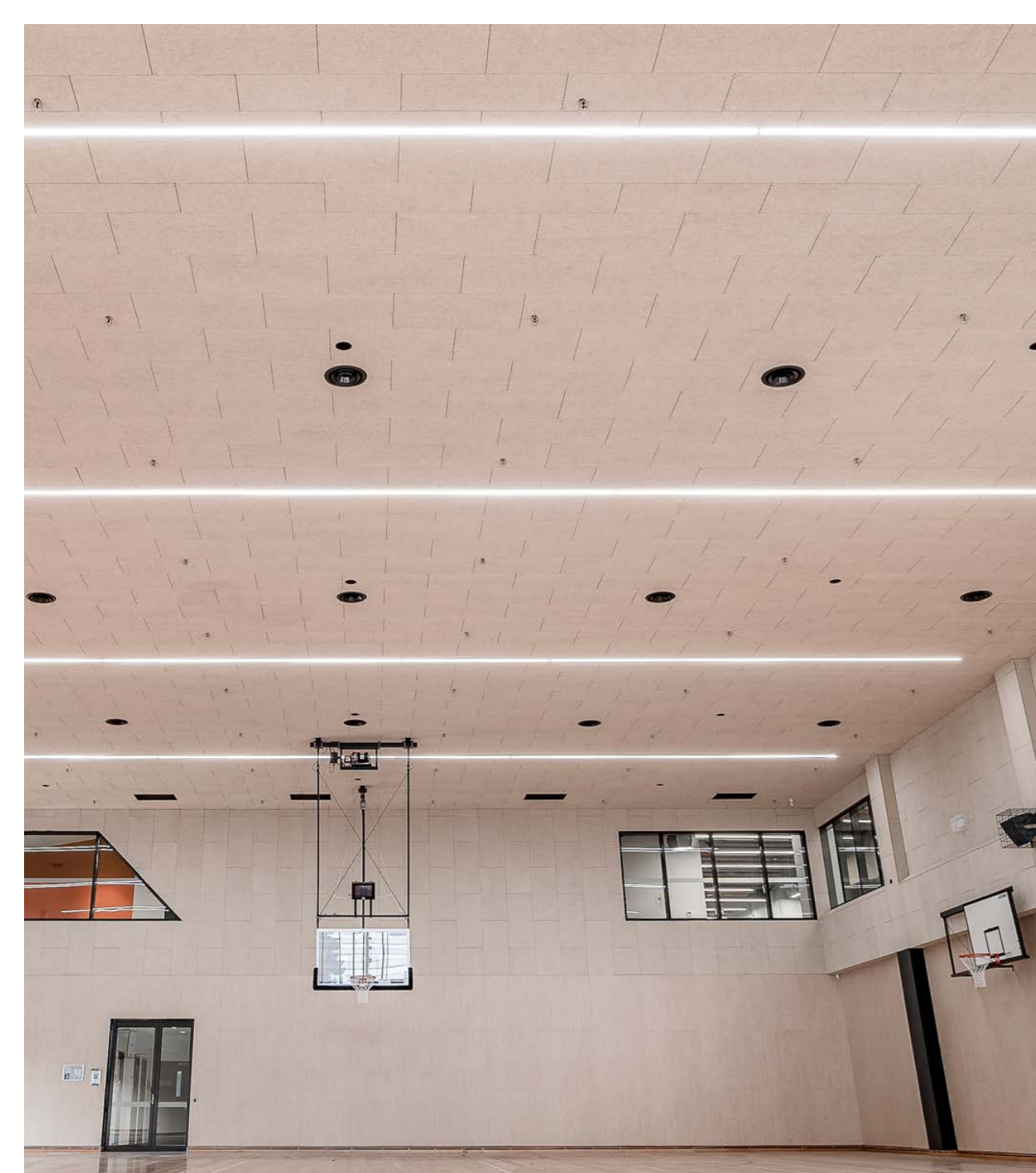
LAY IN PANELS

DIRECT MOUNT PANELS

BAFFLE ELEMENT PROFILE

WOOD WOOL

ACOUSTICS



## Core Systems

### MBS SAS Metal Ceilings



**MBS SAS150**  
System: Clip-In Ceiling



Standard Module Sizes (mm) with 4mm bevel

300 x 300	500 x 500
300 x 600	500 x 1500
300 x 900	600 x 600
300 x 1200	600 x 1200
300 x 1500	750 x 750 with 2mm bevel

**Access:**  
All tiles manufactured with hinge-down access tabs

**Finish:**  
Polyester Powder Coat RAL 9003 as standard.  
All other RAL colours available by request

**Perforations:**  
1522 & 1820 as standard.  
Other patterns available by request

**Acoustics:**  
Up to 1.0 NRC & 27 dB



**MBS SAS200**  
System: Hook-On Ceiling



Module Sizes (mm)

600 x 600	1500 x 300
1200 x 300	1500 x 500
1200 x 600	1800 x 600

Tiles can be up to 3000mm in length & no less than 300mm wide. Bespoke sizes available on request.

**Access:**  
Tiles can be lifted & removed from the concealed grid

**Finish:**  
Polyester Powder Coat RAL 9003 as standard.  
All other RAL colours available by request

**Perforations:**  
1522 & 1820 as standard.  
Other patterns available by request

**Acoustics:**  
Up to 1.0 NRC & 49 dB



**MBS SAS330a**  
System: Lay-On Ceiling (One-Way)



Module Sizes (mm)

600 x 600	1500 x 300
1200 x 300	1500 x 500
1200 x 600	-

Tiles can be up to 3000mm in length & no less than 300mm wide. Bespoke sizes available on request.

**Access:**  
Tiles can be lifted & removed from the exposed grid

**Finish:**  
Polyester Powder Coat RAL 9003 as standard.  
All other RAL colours available by request

**Perforations:**  
1522 & 1820 as standard.  
Other patterns available by request

**Acoustics:**  
Up to 1.0 NRC & 49 dB

## SAS International

Manufacturing World Class Interiors

SAS International is a leading British manufacturer of quality metal ceilings and bespoke architectural metalwork. Installed in iconic, landmark buildings worldwide, SAS leads through innovation, cutting-edge design and technical acoustic expertise. Success is built on continued investment in manufacturing and achieving value for clients through world-class engineered solutions.

- METAL CEILINGS
- LAY-IN
- HOOK-ON
- OPEN CELL
- EXPANDED MESH
- LINEAR METAL
- BESPOKE METAL

## Additional Systems

### MBS SAS Metal Ceilings



**MBS SAS205**  
System: Corridor Ceiling



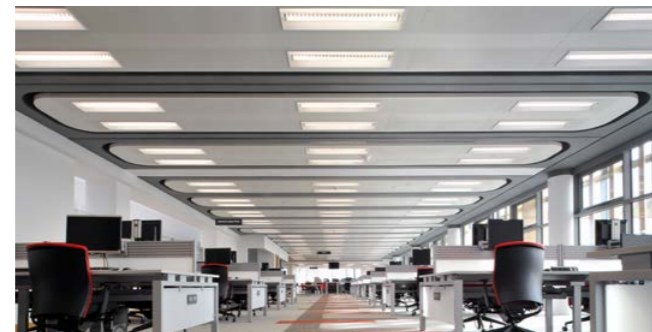
**MBS SAS310/315**  
System: Top-Hat Modular / T-Bar Ceiling



**MBS SAS500**  
System: Perforated Acoustic Baffles



**MBS SAS510**  
System: Curved Perforated Acoustic Baffles



**MBS SAS600**  
System: Acoustic Rafts



**MBS SAS900**  
System: Triangular Polynode Ceiling



\*Contact the MBS team for more details on these systems.

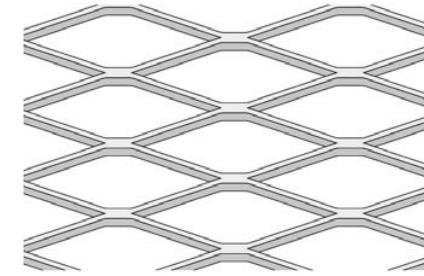


35 COLLINS ST. MELBOURNE | BESPOKE METAL CEILING

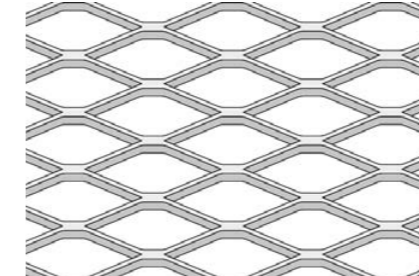
## Mesh Systems

### Overview

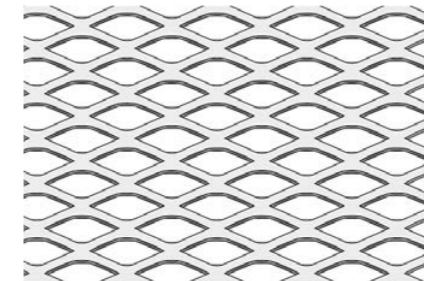
Mesh is an excellent architectural material because of its textured surface providing depth and visual interest. The appearance of mesh changes when viewed from different angles defined as 'open view' and 'closed view'.



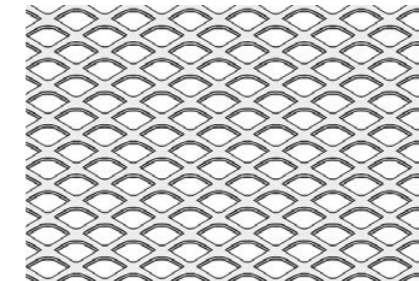
**Celtic**  
Reference: MBS SAS-DL  
Size (mm):  
43 (LW) x 13 (SW) - 2.5 (S) x 1.5 (T)



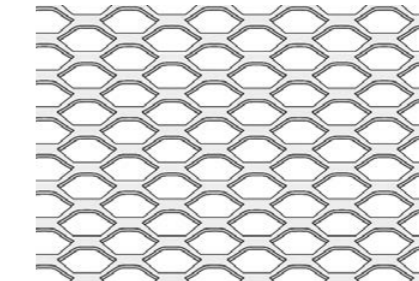
**Tene**  
Reference: MBS SAS-DML  
Size (mm):  
28 (LW) x 10 (SW) - 2 (S) x 1.5 (T)



**Brig**  
Reference: MBS SAS-DM  
Size (mm):  
16 (LW) x 8 (SW) - 2 (S) x 1 (T)



**Tara**  
Reference: MBS SAS-DS  
Size (mm):  
10 (LW) x 5.8 (SW) - 1.5 (S) x 1 (T)



**Kells**  
Reference: MBS SAS-HM  
Size (mm):  
15 (LW) x 6.5 (SW) - 1.3 (S) x 1 (T)



MBS SAS Ceilings are Powder Coated using RAL, Dulux & Interpon colours. Be aware that minimum order quantities on some non-standard powder coats may apply.

## Expanded Metal Mesh

An increasingly popular material option, mesh is an ideal choice to achieve contemporary design aesthetics and is an alternative option to an exposed soffit. Across commercial, transportation, retail, leisure and educational sectors, we work directly with architects, designers and contractors to meet the desired aesthetic and functional needs of the project. SAS Mesh has a wide range of pattern and finish options and can be manufactured to the specifiers shape and design.

- Lay-In or Hook-On options
- Suitable for both internal & external applications
- Group 1 Fire
- Acoustic Performance - Up To NRC 1.0
- Multiple acoustic backing options available upon request

METAL CEILINGS

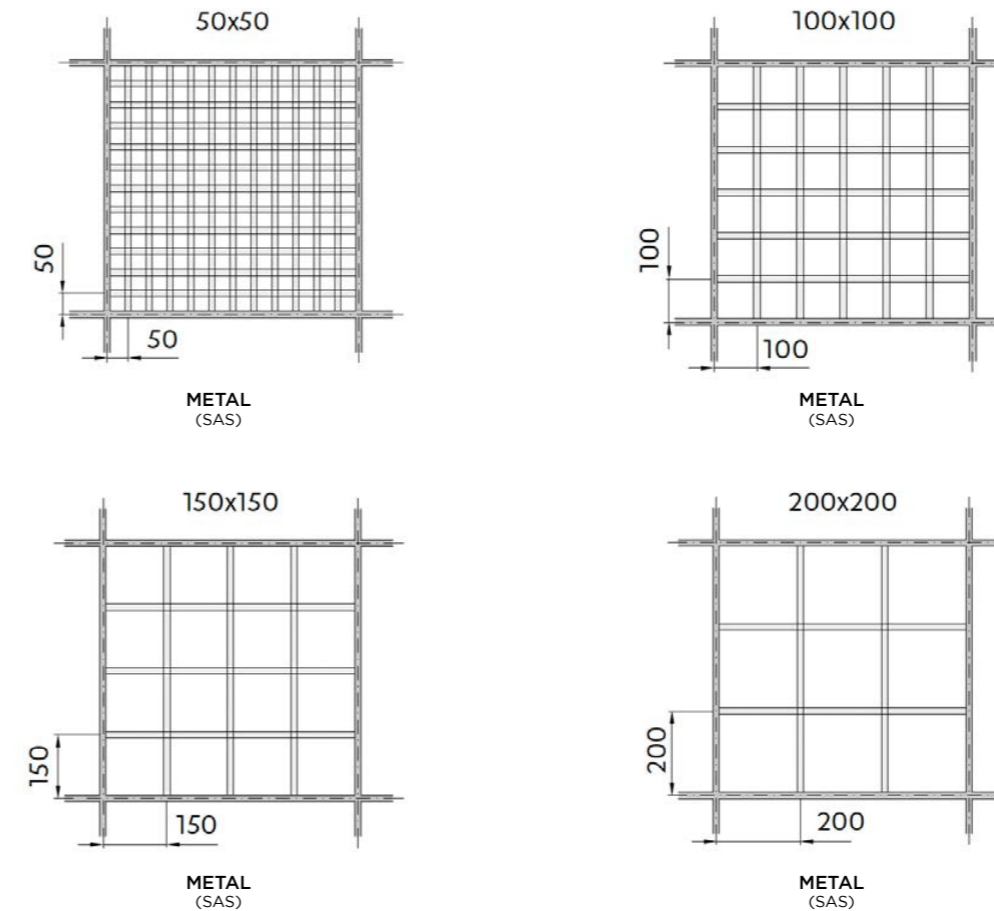
EXPANDED MESH

INTERNAL & EXTERNAL

## Metal Open Cell Options

### Overview

Open cell ceiling systems comprise a series of open cell modules designed to lay onto a suspension grid; in short, they aren't covered by tiles. The ceiling tiles can integrate within other metal ceiling systems and plasterboard ceilings.



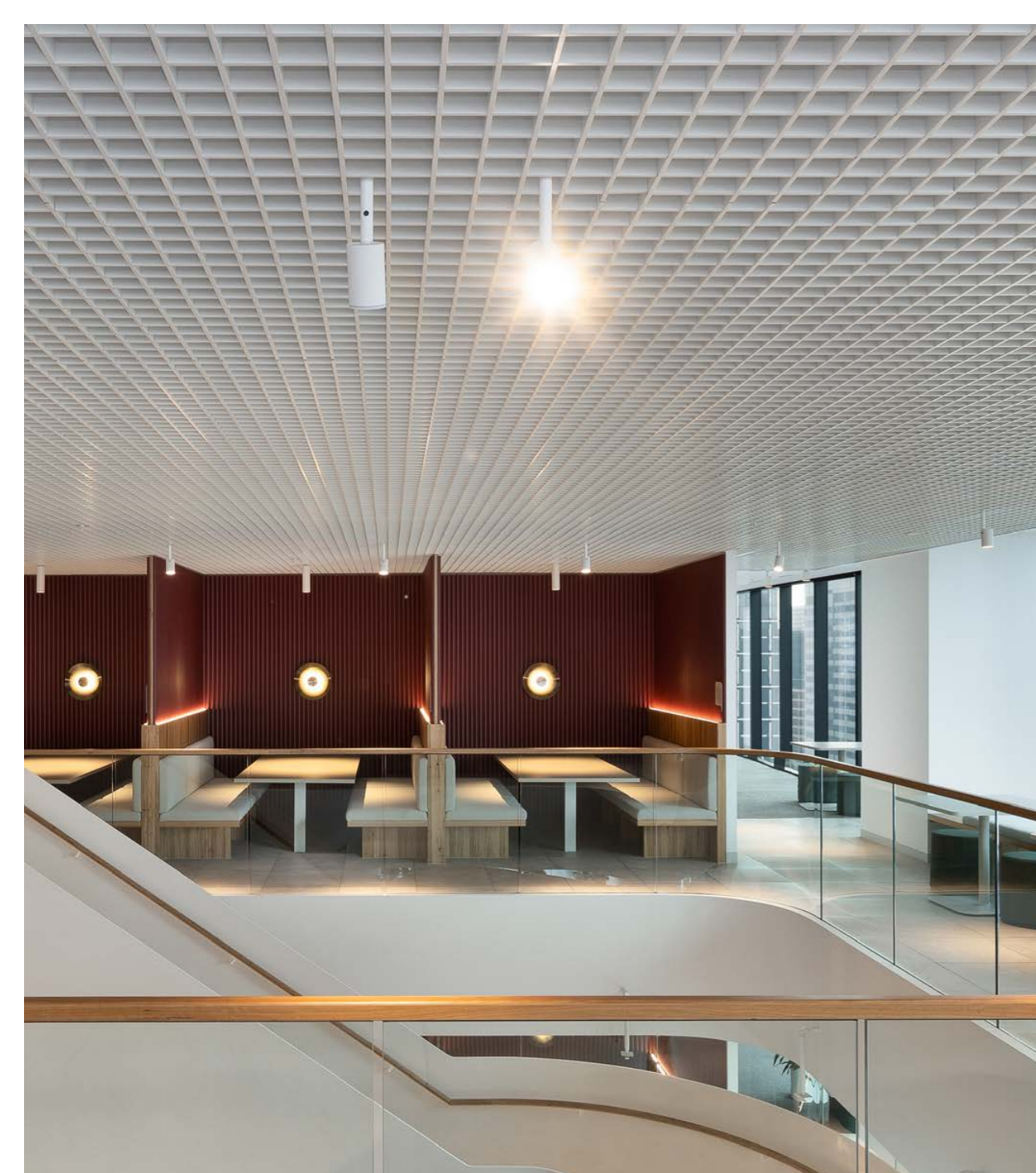
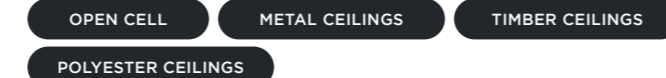
Metal Open Cell Ceilings are Powder Coated using RAL, Dulux & Interpon colours. Be aware that minimum order quantities on some non-standard powder coats may apply.

## Metal Open Cell Ceilings

Open Cell ceiling systems comprise a series of open cell modules designed to lay onto a suspension grid. The ceiling tiles can integrate within other metal ceiling systems and plasterboard ceilings.

Our open cell ceilings are designed and built to the highest standards and provide an exceptional level of build and acoustical quality. Open cell ceilings can provide a flexible option for a wide range of projects.

- Available sizes – 600x600mm, 1200x600mm
- Up to Group 1 Fire
- NRC up to 1.0





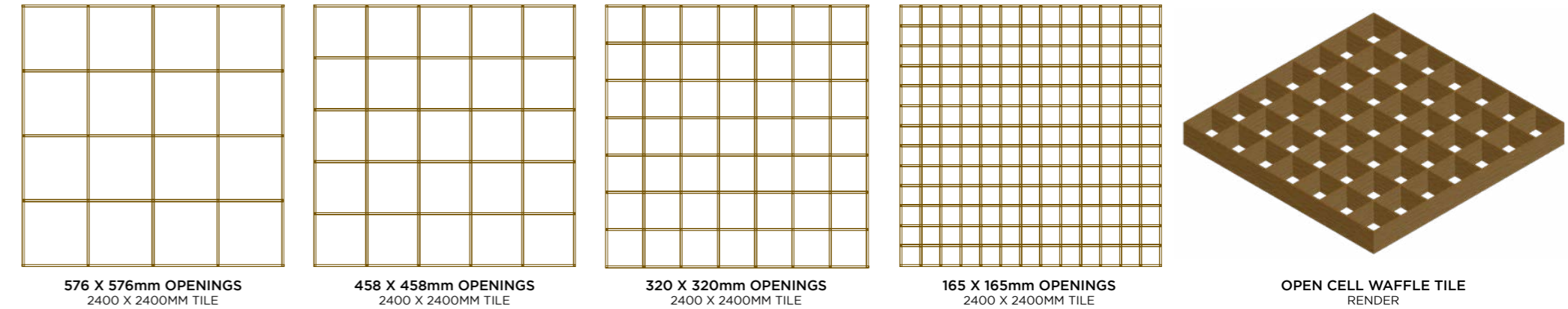
### Timber Open Cell Ceilings

Timber waffle ceilings are a striking architectural feature that combine functionality with aesthetic appeal. Featuring a grid-like structure of intersecting timber beams, they create a unique, three-dimensional pattern that adds depth and texture to any space. These ceilings are highly versatile, offering excellent acoustic performance, natural warmth, and a contemporary yet timeless design.

- Veneer finishes available
- Laminate finishes available
- Concealed fixings
- Acoustic backing options available
- Custom sizes available upon request
- Seismic design available upon request



### Timber Open Cell Options



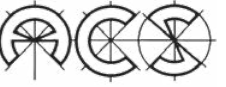
### Finishing Options

#### Laminex Finishes



#### Polytec Finishes





## Linear Perforated Metal

### Ceiling Systems



#### Spac Deckform Security

**Access:**

Fully concealed two-way. Heavy Duty Carrier and T-Bar suspension system. Panels screw fixed, via concealed method.

**Sheet Size:**

150mm wide x 6000mm long max.  
Other lengths available upon request

**Perforations:**

2.5mm perforation @ 15% open area.  
Also available unperforated.

**Acoustics (insulation):**

25mm = NRC 0.65. 50mm = NRC 0.75



#### Coruline

**Access:**

Fully concealed one-way T-Bar suspension system. Panels screw fixed, via concealed method

**Sheet Size:**

160mm wide x 6000mm long max.  
Other lengths available upon request

**Perforations:**

2.5mm perforation @ 15% open area.  
Also available unperforated.

**Acoustics (insulation):**

25mm = NRC 0.70. 50mm = NRC 0.85.  
75mm = NRC 0.90



#### Linear 5

**Access:**

Fully concealed one-way T-Bar suspension system. Panels are snapped into clips on the T-Bar carrier.

**Sheet Size:**

81mm wide x 6000mm long max. Other lengths available upon request. Installed at 100mm centres, with a 19mm gap.

**Perforations:**

2.5mm perforation @ 15% open area.  
Also available unperforated.

**Acoustics (insulation):**

Unperforated: 25mm = NRC 0.55 & 50mm = NRC 0.65  
Fully perforated: 25mm = NRC 0.65 & 50mm = NRC 0.80

## ACS

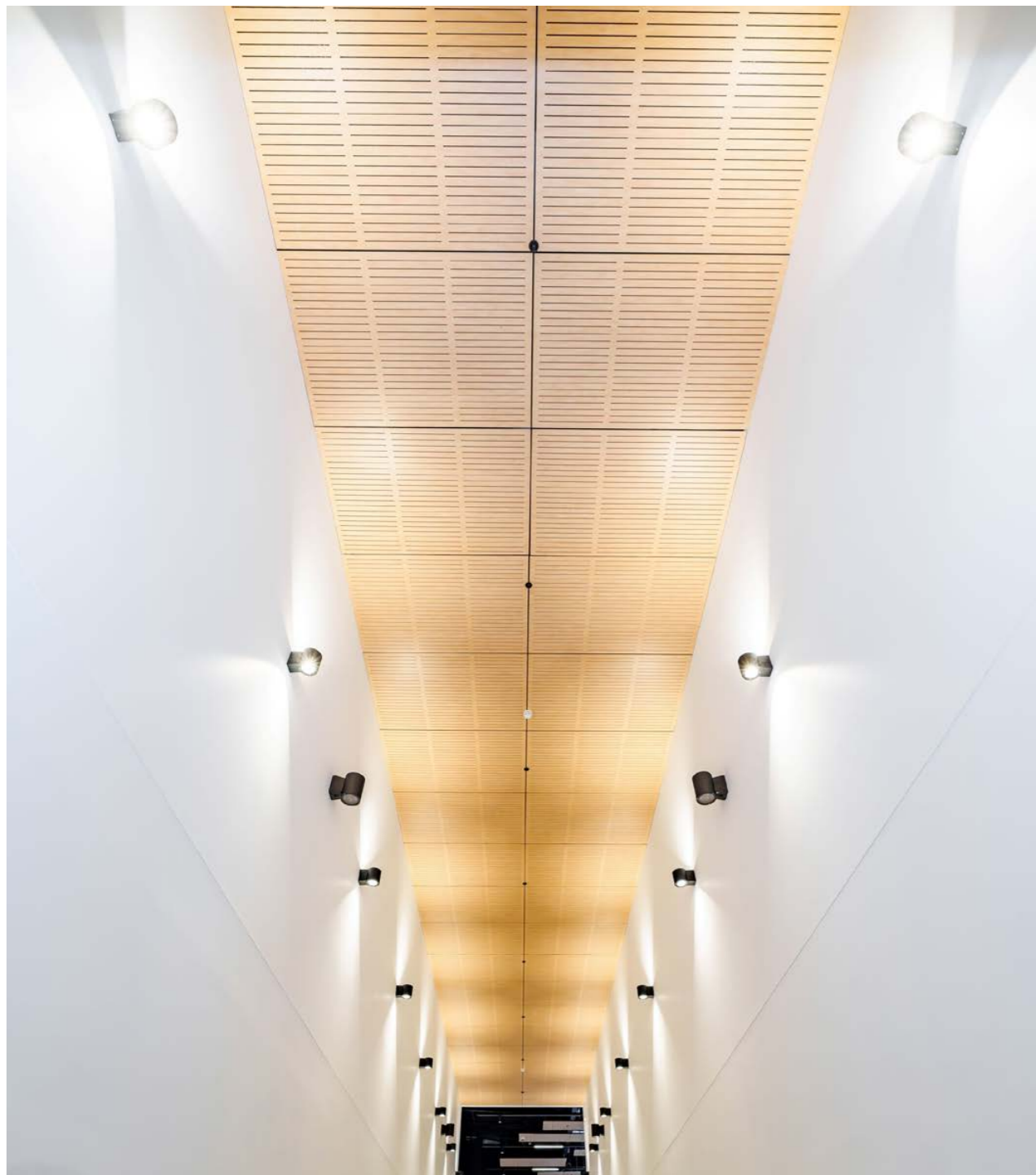
ACS Metal Linear Strip Ceilings have redefined, changed the ceiling industry, since hitting the in mid 1960s and still going strong today, the main advantages of Metal Ceilings is an economical tidy clean finish and offering a light weight ceiling with over all high acoustic values.

- Fire Performance – Group 1
- Acoustic Ratings – NRC 0.55 up to NRC 0.85
- Perforation Options
- Steel or Aluminium options available
- Concealed Fixing
- Colourbond Colour Range
- Powdercoat Finishes in Dulux & Interpon available
- Lengths made to order up to 6000mm (custom lengths available)

METAL CEILINGS

PERFORATION PATTERNS

ACOUSTICS



## Keystone Linings

For over 40 years, Keystone Linings have specialised in manufacturing commercial Acoustic Panels for Wall and Acoustic Panels for Ceiling for Australian Architects and Builders. They're pioneers in designing innovative finishes and substrates that create beautiful, functional and high-performance acoustic systems.

- Group 1-3 Fire
- Acoustic Performance - Up To NRC 0.85
- Coating options
- Perforation pattern options
- Various Plywood options available
- Various Veneer & Laminate finishes available

PLYWOODS

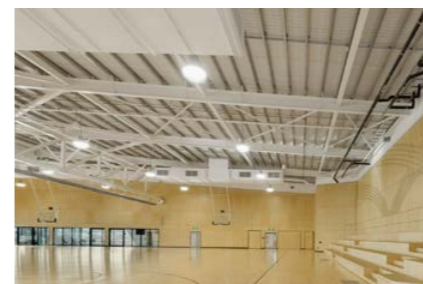
VENEERS

LAMINATES

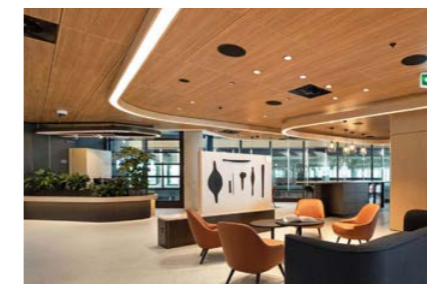
ACOUSTICS

## Decorative Linings

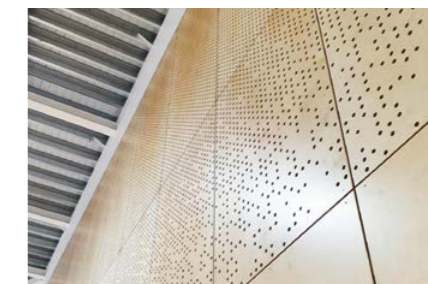
### Lining Options



**Key Ply**  
Acoustic Plywood



**Key Nirvana**  
Prefinished MDF



**Key Eclipse**  
Fire Retardant MDF



**Key Endura**  
Perforated FC Sheet



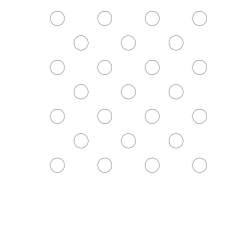
**Key Designa**  
Bespoke Designs



**Key R Line**  
Routed MDF Designs

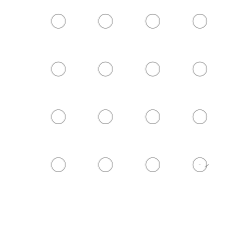
### Perforation Types

\* Wide range of perforation types available



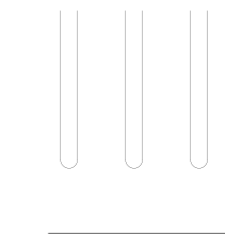
**Diamond**  
KP1 / 20 / G

Layout: Diamond  
Spacing: 20mm  
Hole Size: 6mm dia  
Open Area: 14.2%



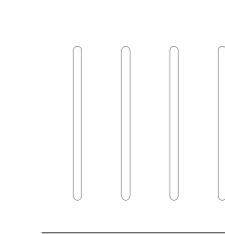
**Square**  
KP3 / 20 / G

Layout: Square  
Spacing: 20mm  
Hole Size: 6mm dia  
Open Area: 7.2%



**1 Row Slot**  
KS1 / 50 / G

Layout: 1 Row  
Spacing: 50mm  
Slot Size: 13mm  
Open Area: 26.0%



**4 Row Slot**  
KS4 / 75 / G

Layout: 4 Rows  
Spacing: 75mm  
Slot Size: 13mm  
Open Area: 15.0%

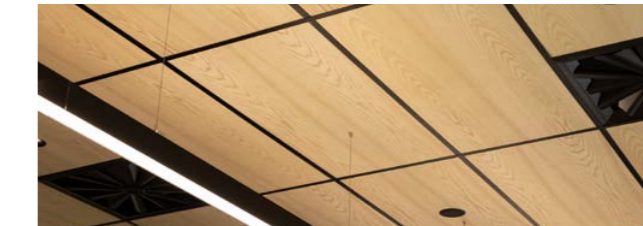
## Autex Range

### Acoustic Solutions

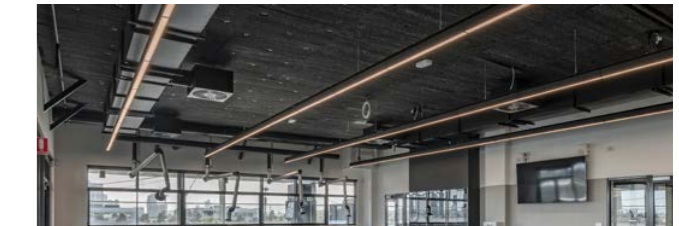
- Ceiling & Wall Applications
- Material - Polyester
- Fire Performance - Group 1
- Acoustic Ratings - Up to NRC 1.0
- Direct Fix Options
- Suspended Options



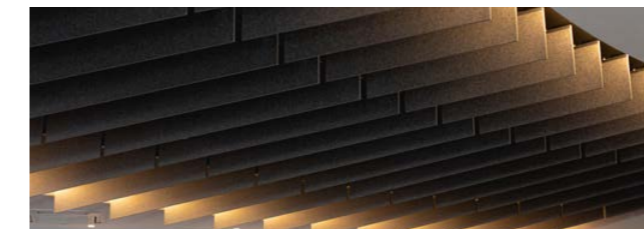
3D TILES  
Ceilings & Walls



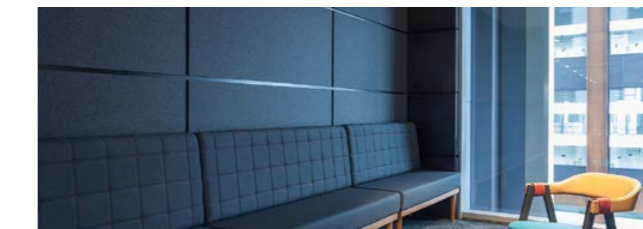
ACOUSTIC TIMBER  
Beams & Panels



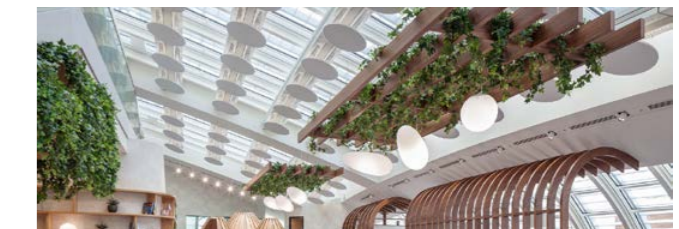
ASL  
Acoustic & Thermal Soffit Lining



FRONTIER  
Acoustic Fins



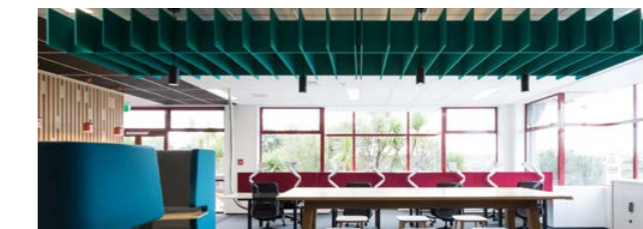
CUBE / SYMPHONY / COMPOSITION  
Acoustic Pinboards



HORIZON  
Suspended Acoustic Panels



GROOVE  
Routed Acoustic Designs



LATTICE  
Suspended Acoustic Baffles



QUIETSPACE PANELS  
High Performance Acoustic Panels

## Autex

Beautiful acoustics for spaces where people live, work, and learn

From humble beginnings more than 50 years ago, Autex Acoustics® has grown to serve over 18 export markets, with manufacturing and finishing networks in four countries.

Autex Acoustics is a leader in the development and manufacturing of non-woven architectural textiles, supplying an increasingly sophisticated range of products to the building industry.

ACOUSTICS

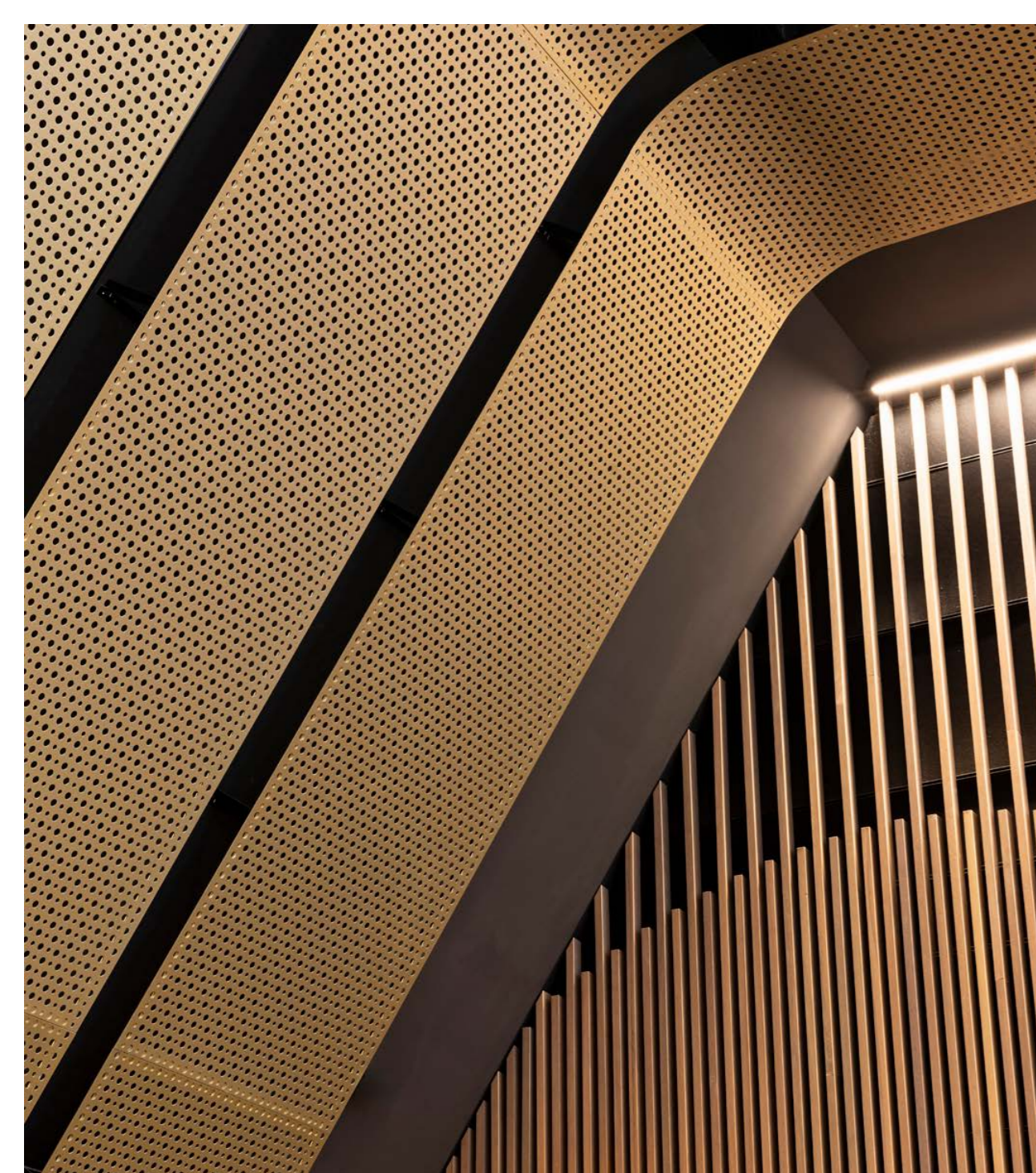
CEILING & WALLS

ACOUSTIC TIMBER

SUSPENDED PANELS

ACOUSTIC PINBOARDS

ACOUSTIC FINES



## Bespoke Design

Our role as your design partner is to find a way to make your design possible, with the budget that you have.

Bespoke metal ceilings offer architects a range of design options and can be customised to fit any space. They are also highly durable and require minimal maintenance, making them an ideal choice for any interior design project.

Conceptualisation is the first step in the process of designing an interior that is both aesthetically pleasing and functional. By analysing the available space and the people who will be using it, MBS Architectural can help architects and interior designers to come up with creative ideas to make the most of the space. From aesthetics to finishes, acoustics to fire performance, we've got you covered.

- BESPOKE
- METAL CEILINGS
- DESIGN SUPPORT
- CUSTOM SAMPLES

## Case Study: Marvel Stadium

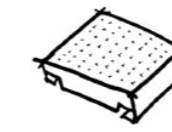
### Process



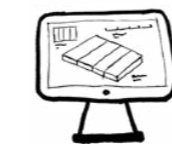
**CONCEPTUALISATION**  
Big Picture Ideas



**WORKSHOPPING**  
Getting Focused



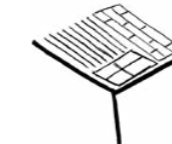
**HAND SAMPLES**  
Aesthetic; Touch & Feel



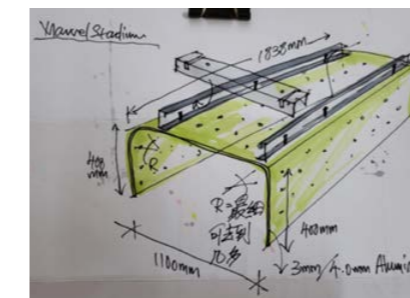
**CAD DRAWINGS**  
Detailed Design



**SHOP DRAWINGS**  
Integration Considerations



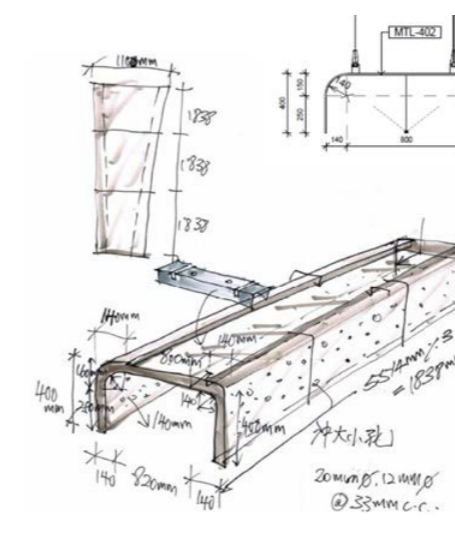
**PROTOTYPING**  
The Final Touches



Detailed Sketch



Concept Render

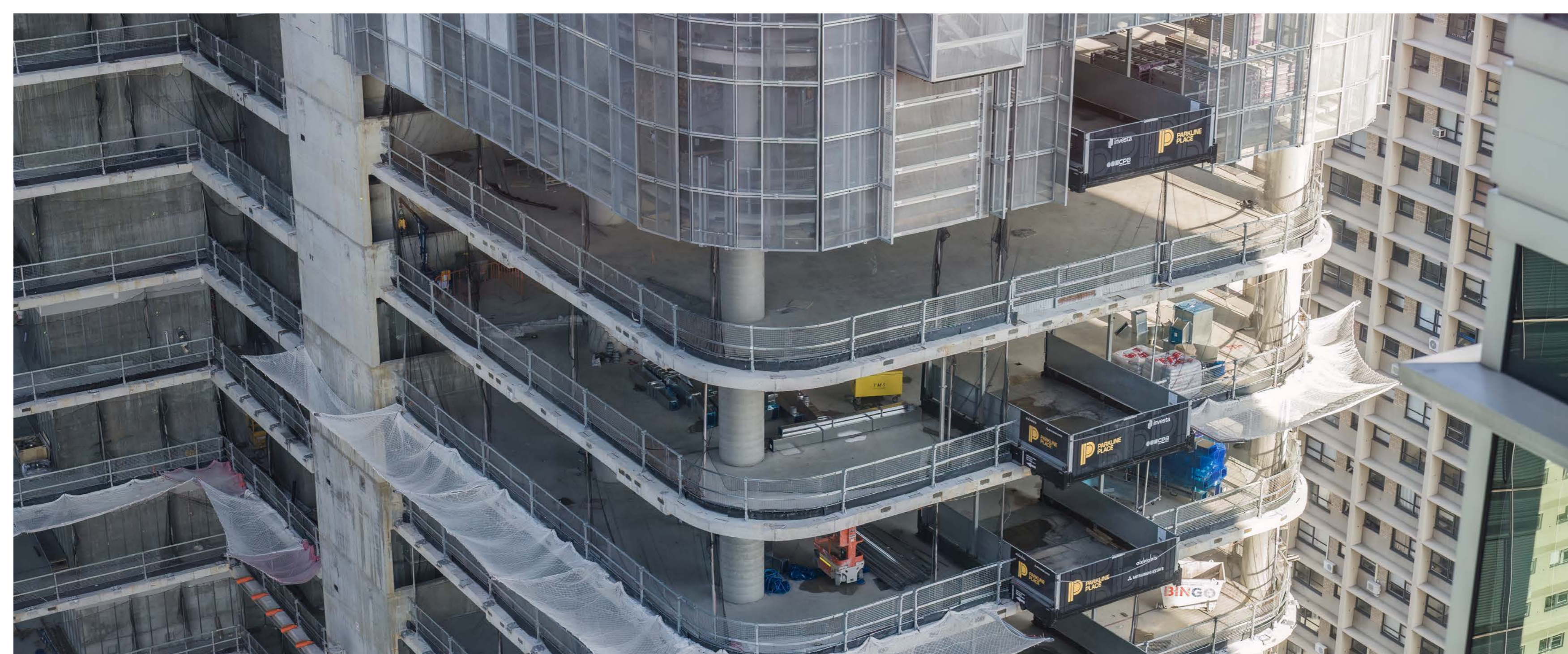


Workshopping & Concept Revision



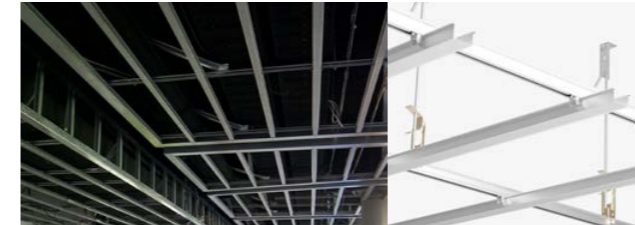
This multi-purpose sports and entertainment stadium in the heart of Melbourne's Docklands called for grandeur. Curved, anodised panels snake elegantly along the building's curvature, fused with a perforated trough featuring glowing lighting which highlight golden hues.

The raft ceiling sections, anodised in Champagne Gold, were designed to meet specific customer requirements and they merge seamlessly into the luxurious atmosphere of this interior. They comprise 3 mm thicknesses of perforated aluminium panel, rounded to form a U shape. To align these panels perfectly at their butt seams, very stylish connectors were employed. In addition to the U-shaped raft ceilings, a 10 metre length of S-shaped metal ceiling provides elegant cladding for the different heights within this interior space.

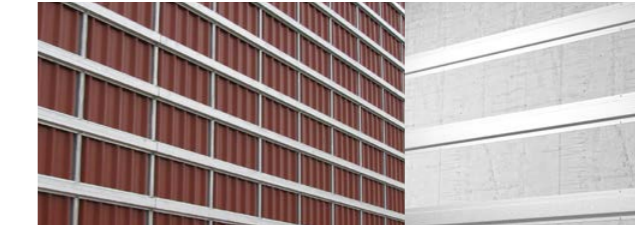


# Building Products

## Systems



**CONCEALED CEILING SYSTEMS**  
Engineered to provide designers and installers with a flexible and secure system for a building board flush finish.



**TOP HAT & CLADDING SECTIONS**  
A popular way of fixing façade linings to the exterior structure of a building in both commercial and domestic applications.



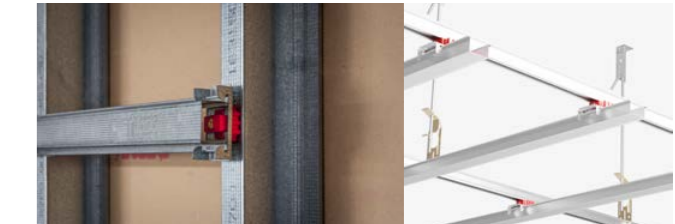
**STEEL STUD SYSTEMS**  
Engineered to provide durability and versatility that meets your design criteria and complies with the Building Code of Australia.



**VORTEX HIGH PERFORMANCE FRAMING SYSTEM**  
A breakthrough in internal wall systems, the Studco Vortex High Performance Framing System improved the behaviour of the wall structure in high-rise buildings.



**HEDA TOUGH WALL SYSTEM**  
The fast and easy way of creating openings in internal and external walls.



**SOUND INSULATION SYSTEMS**  
Resilmount sound insulation systems cover a wide range of effective solutions for insulating noise transfer for the wall and ceiling industry.

## Studco

Leaders in Innovative Building Products

A manufacturer of commercial and residential steel building systems whose innovative building products span Australia, New Zealand, North America, UK, Europe and the Middle East.

With a focus on being Australian Made and embodying the quality of Australian manufacturing, Studco remains dedicated to serving the Australian construction industry.

STUD STEEL & TRACK

VORTEX FRAMING

HEDA TOUGH WALL SYSTEM

STRUCTURAL SYSTEMS

SOUND INSULATION

## Seismic Design

Studco's experienced engineers offer industry-leading, value-engineered solutions for various essential elements within the building envelope. Project specific frame designs, advanced seismic solutions for walls and ceilings, and on-site installation reviews are all available upon request.



## Systems

### EzyJamb

Achieve the ultimate 'clean line' interior finish for modern buildings. Flush-finish walls and ceilings are produced quickly and easily with the EZ Concept range of durable metal sections, including the patented EzyJamb® door jamb.



**EZC**  
Classic Adjust  
Split Type Jamb



**SRC**  
Single Rebate  
Door Frame



**ISD**  
Inswing Door  
Frame

### EzyCap

EzyCap is a quick and economical way to finish off your stop ends and wall details to give you a clean and flush finish, inline with the rest of the EZ concept range. Available in custom widths and sizes.

### EzyReveal

EzyReveal is an Australian made profile that is a strong and secure window frame that enables the window to have a flush finish with the plasterboard.

### Cavkit

Cav Kit is a product used to make any Cavity Slider an aesthetically pleasing smooth, clean and flush finish. This product has been developed to make the door appear invisible when open and provide privacy when closed. The clean edges, flush finish is unique to the Cav Kit profile.



131 Walsh Street | Melbourne

## EZ Concept

EZ Concept® are the innovators of the world-renowned EzyJamb® door jamb systems, offering an expansive range of architrave-free architectural finishing products to create modern interiors for residential, industrial and commercial spaces.

With their innovative line of products, they help architects, interior designers, builders and developers achieve contemporary flush finished designs.

Please contact the MBS Team for quotes & order forms.

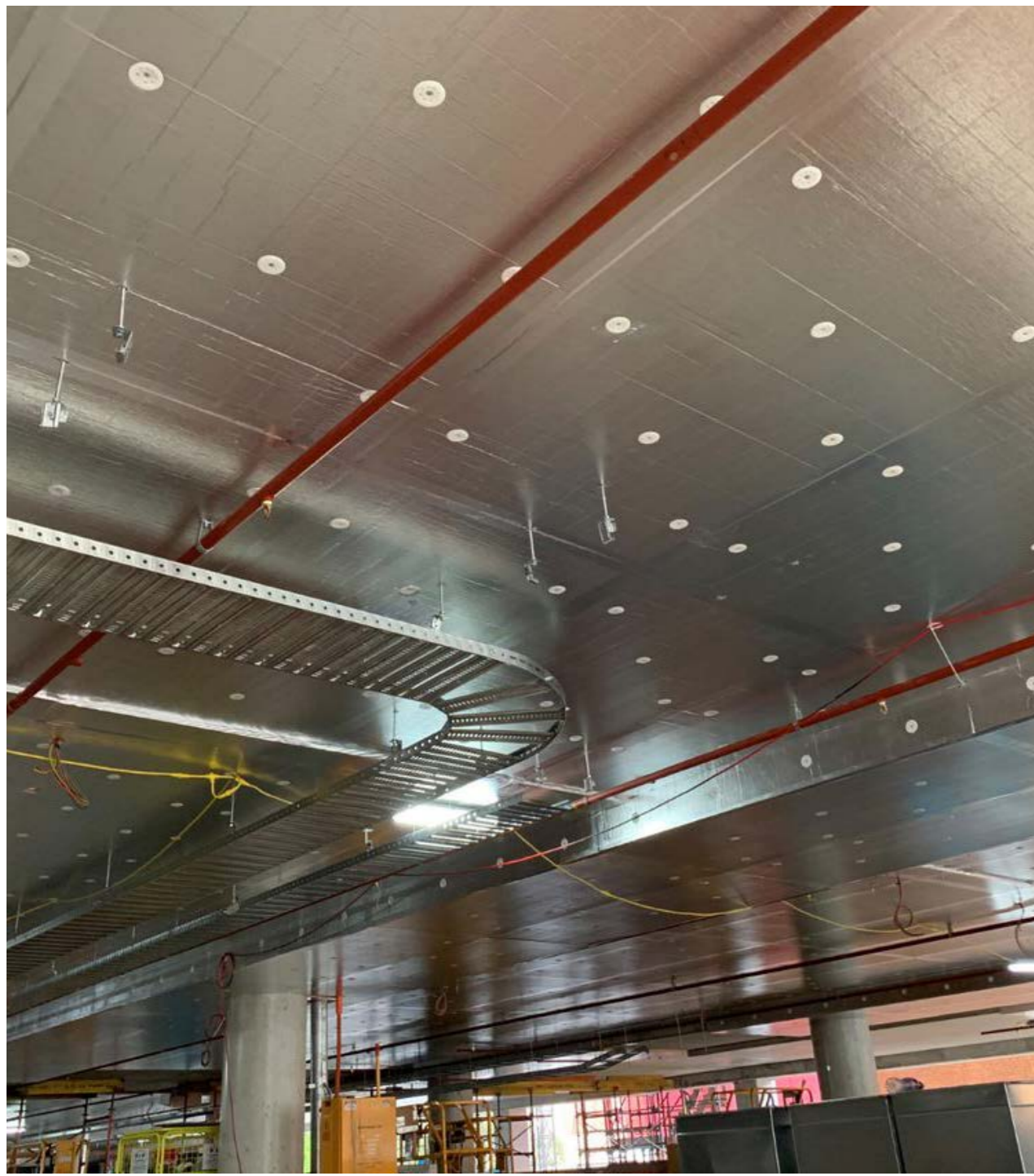
EZYJAMBS

EZYCAP

EZYREVEAL

CAVKIT

DOOR SYSTEMS



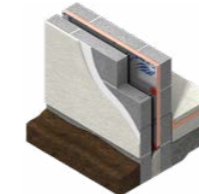
## Materials

### Insulation Systems

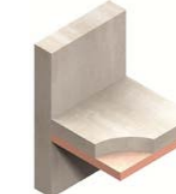
Insulation is produced to reduce the heat flow and save energy throughout your house or building. The better insulated your home or building is, the better your energy remains within the premises, allowing the desired temperature to be achieved in the colder, and the warmer months.



Kooltherm® K3 Floorboard



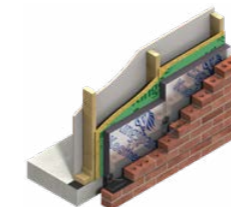
Kooltherm K8 Cavity Board



Kooltherm K10 G2 Soffit Board



K10 PLUS Soffit Board (Group 1)



K12 Framing Board



K17 Insulated Plasterboard

## Kingspan

Creating Better Buildings for a Better World

A leading manufacturer of premium and high performance rigid insulation products and insulated systems - including roofs, walls and floors. With focus on innovation that makes a difference to you: offering thinner, lighter, higher performing products.

In short, Kingspan supply insulation boards for low energy, low carbon buildings.

KINGSPAN INSULATION

KOOLTHERM® K3 FLOORBOARD

K10 G2 SOFFIT BOARD

K17 INSULATED PLASTERBOARD

KOOLTHERM® K18 INSULATED PLASTERBOARD

### Key benefits of insulating:

#### Thermal properties

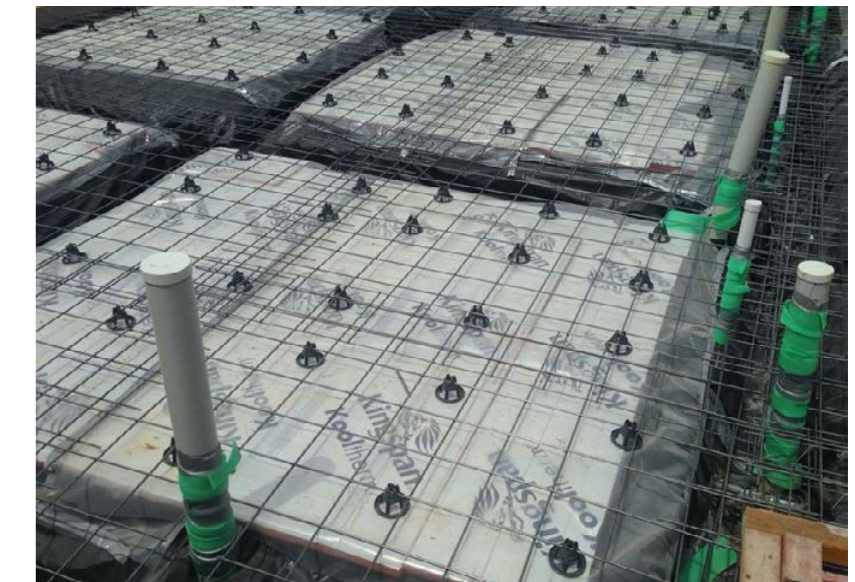
The higher your R-value of insulation, the better it will perform thermally and reduce heat flow from the external conditions.

#### Acoustic Properties

Insulation batts also help to reduce noise between rooms & from external pressures. The higher density of the insulation, the better the noise reduction.

#### Fire Performance

Depending on the application and fire requirements, non-combustible insulation can be supplied to inhibit fire spread & limit smoke spread from one area to another, providing safety for the residents.



## Insulation

### Acoustic & Thermal Options



Autex Slab Liner (ASL)



Kingspan Aircell



CSR Martini



Autex Greenstuff



Knauf Earthwool



CSR Bradfords

## Insulation

Insulation is produced to reduce the heat flow and save energy throughout your house or building. The better insulated your home or building is, the better your energy remains within the premises, allowing the desired temperature to be achieved in the colder, and the warmer months.

- Ceiling & Wall Options
- Acoustic
- Thermal
- Non Combustible
- Group 1 Fire Options

INSULATION

AUTEX

KINGSPAN

CSR

KNAUF

### Key benefits of insulating:

#### Thermal properties

The higher your R-value of insulation, the better it will perform thermally and reduce heat flow from the external conditions.

#### Acoustic Properties

Insulation batts also help to reduce noise between rooms & from external pressures. The higher density of the insulation, the better the noise reduction.

#### Fire Performance

Depending on the application and fire requirements, non-combustible insulation can be supplied to inhibit fire spread & limit smoke spread from one area to another, providing safety for the residents.



## Explore Projects

**Flemington Community Hub**  
Perforated Metal Baffles

**Prahran High School**  
Metal Pan Ceiling

**La Trobe University**  
Timber Cladding

**Morgan Stanley Fit-Out**  
Apollo Aluminium Battens

**KPMG QLD**  
Apollo Aluminium Battens

# We turn ideas into reality

We work with our clients to  
deliver creative solutions that  
drive engagement.

**Geelong Performing Arts Centre**  
Expanded Metal Mesh

**35 Collins Street**  
Bespoke Metal Pan Ceiling

**Bistro C**  
Wood Wool

**NAB Fit-Out**  
Aluminium Tubes

**DLA Piper**  
Lay-On Metal Pan Ceiling



# MBS

Architectural

## Let's Talk.

Our team is ready and on hand to help — from detailed specifications to samples, additional product details, and expert support. Reach out to discuss how we can help bring your vision to reality. Let's collaborate.

**VIC**  
03 9580 7800  
7 Haymer Court, Braeside 3195  
hello@mbsarchitectural.com.au

**QLD**  
07 2101 4129  
13 Pease Court, Bethania 4205  
hello@mbsarchitectural.com.au