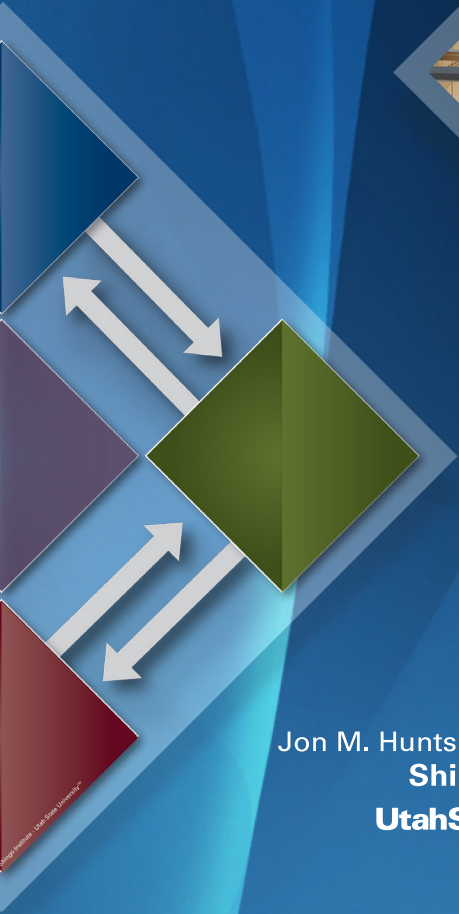


THE SHINGO MODEL



Jon M. Huntsman School of Business
Shingo Institute
UtahStateUniversity.

© 2010 Shingo Institute. Utah State University.



ACKNOWLEDGMENTS

The Shingo Institute wishes to thank the team that provided scholarly work to produce the *Shingo Model*[™] and its guidelines, which were first published in January 2008. The *Shingo Model* is still the basis for the curriculum and other work the Institute continues to develop today. Those most closely involved during their tenure at the Shingo Institute and Utah State University are Shaun Barker, Dr. Randall Cook, Robert Miller, and Jacob Raymer. Special thanks to Dr. Brian Atwater and Brent Allen for their contributions regarding systems thinking.

The Shingo Institute would also like to thank the members of the Shingo Executive Advisory Board who provided practical insights and critical feedback as the Model evolved. Many other friends of the Shingo Institute continue to contribute time and ideas in the pursuit of organizational excellence. The Institute is appreciative of each of them.

Finally, special thanks to the Jon M. Huntsman School of Business at Utah State University for providing the Shingo Institute with a home and an environment to learn, flourish, and grow.

The Shingo Model[™], Version 15.3

© Copyright 2025 Utah State University. All rights reserved.

Copyright and Trademarks

The content of the *Shingo Model* is copyrighted by Utah State University with all rights reserved. All images and marks are trademarked, as noted. No part of this publication may be reproduced or transmitted in any form or by any means, electronic or mechanical, including photocopying, recording, or use of any information storage or retrieval system, for any purpose without the express written permission of Utah State University. Trademarks understood to be owned by others are used in a non-trademark manner for explanatory purposes only, or ownership by others is indicated to the extent known.



Huntsman Hall • Jon M. Huntsman School of Business, Utah State University

THE SHINGO PURPOSE

Based on timeless principles, the Shingo Institute shapes cultures that drive organizational and operational excellence.

THE SHINGO INSTITUTE MISSION

The mission of the Shingo Institute is to improve the process of improvement by conducting cutting-edge research, providing relevant education, performing insightful organizational assessment, and recognizing organizations committed to achieving sustainable world-class results.

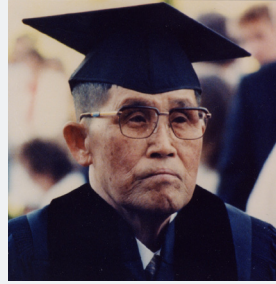


SHINGO ORIGINS

Few individuals have contributed more to the development of total quality management (TQM), just-in-time manufacturing (JIT), and Lean manufacturing as Shigeo Shingo.

Many years before these ideas became popular in the western world, Dr. Shingo wrote about ensuring quality at the source, flowing value to customers, working with zero inventories, rapidly setting up machines through the system of "single-minutes exchange of die" (SMED), and going to the actual workplace to grasp the true situation there ("going to gemba").

Over the course of his life, Dr. Shingo wrote and published 18 books discussing these and other topics, seven of which have been translated from Japanese into English. He also worked extensively with Toyota executives, especially Mr. Taiichi Ohno, who collaborated with Dr. Shingo to apply these concepts.



Dr. Shigeo Shingo, 1988
*Jon M. Huntsman School of
Business graduation ceremony*

"No matter how effective it may be to set clear objectives and then strive to achieve them, bursts of effort alone won't do the trick; in the final analysis, methods must be improved."

~ Dr. Shigeo Shingo



“It is universal truth that those who are not dissatisfied will never make any progress. Yet even if one feels dissatisfaction, it must not be diverted into complaining; it must be actively linked to improvement.”

~ Dr. Shigeo Shingo





Always on the cutting edge of new ideas, Dr. Shingo envisioned collaborating with an organization to further his life's work through research, practical-yet-rigorous education, and a program for recognizing the best in organizational excellence throughout the world.



In 1988, Dr. Shingo received an honorary doctorate of management from Utah State University in Logan, Utah, due to the efforts of Professor Vernon Buehler, an early advocate of Shingo's teachings. Later that year, Shingo's ambitions were realized when the Shingo Prize was

organized and incorporated as part of the university due to a generous gift by Norman Bodek.

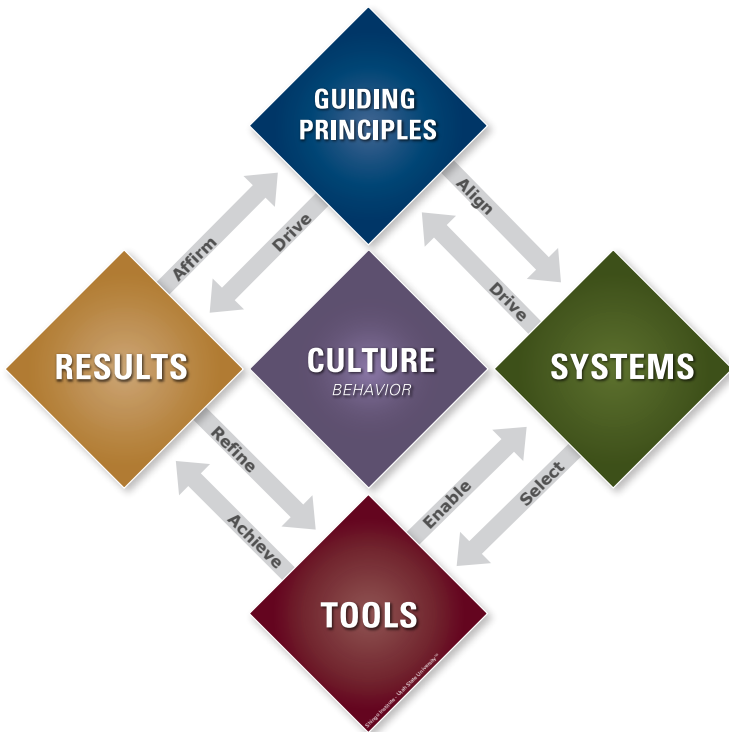
While the Shingo Prize remains an integral part of the Shingo Institute, the scope of the Institute has expanded to include various educational offerings such as conferences, webinars, podcasts, benchmarking visits, study tours, and the Shingo workshop series. The six Shingo workshops, based on the *Shingo Model*, are delivered by an international network of Shingo Licensed Affiliates.



THE SHINGO MODEL™

For any organization to be successful long term, it must engage in a relentless quest to improve. Improvement is hard work but the alternative is entropy. There is no middle ground. More than the application of a new tool or a leader's charismatic personality, organizational improvement requires executives, managers, and team members that are humble, engaged, and empowered. Sustainable results require a culture in which every person is involved in making improvements every day.

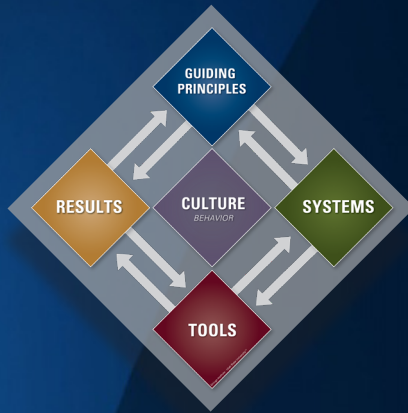
Sustainable results also depend upon the degree to which an organization's culture is aligned to specific guiding principles. The *Shingo Model* provides a powerful framework designed to guide the transformation of an organization's culture toward achieving ideal results.



The Shingo Model™



Components of the *Shingo Model*



Guiding Principles

The ten *Shingo Guiding Principles* are the basis for building a lasting culture and achieving organizational excellence. They are divided into three dimensions: Cultural Enablers, Continuous Improvement, and Enterprise Alignment.

Systems

A system is a collection of tools working together to accomplish an intended outcome.

Tools

A single device or point solution that accomplishes a specific task.

Results

A measurable outcome, either successful or unsuccessful, that results from the implementation of tools and systems.

Culture

All behaviors within an organization.



The *Shingo Model* is a graphical representation of the concepts discovered during its development. Most importantly, it conveys the relationships and interactions between tools, systems, principles, culture, and results. Because learning is ongoing, the *Shingo Model* has changed over the years and may continue to do so.

The *Shingo Model* is not an additional program or another initiative for organizations to implement. Rather, it introduces the *Shingo Guiding Principles* and articulates their relationship to systems, tools, results, and culture. The *Shingo Model* provides structure on which to anchor current initiatives and with which to close gaps to work toward sustaining a culture of organizational excellence.

Whether an organization's objectives are for financial or more altruistic purposes, the focus of all executives is on results. Organizations design systems with the intent of achieving specific results, and they select tools to support those systems. When one system or tool doesn't achieve target results, executives try modifying current systems or implementing new tools in the hope of reaching that target.

But tools and systems alone do not operate a business. People do. Each person within an organization has a set of values and beliefs that influences the way he or she behaves. Ultimately, the aggregate of people's behaviors makes up organizational culture, and culture greatly influences the organization's results.

Edgar Schein, professor emeritus at the MIT Sloan School of Management said, "The only thing of real importance that leaders do is to create and manage culture. If you do not manage culture, it manages you, and you may not even be aware of the extent to which this is happening."



Cultures that form by accident or without attention can have significant, far-reaching negative effects. A culture built around “firefighting” honors and promotes the “firefighters” rather than identifying and fixing the problems that cause emergencies in the first place. In a culture that promotes those who seek to gain power, people might withhold information except when it has the potential to benefit them personally. They keep the decision-making authority as close to them as possible rather than trusting others to make appropriate choices. This makes the organization respond much more slowly to issues and much less likely to make the best decisions. Likewise, it is not difficult to imagine the behaviors that will arise in organizations that foster fear, survival, blaming and backbiting, malaise, and other negative cultures.

“People will not be set in motion until they are convinced on an emotional level based on trust—until they can say, ‘That’s right! I know that’ll make the job easier and improve quality at the same time!’ or ‘It looks kind of hard, but I believe the guy who’s telling me this, so it’s got to work!’”

~ Dr. Shigeo Shingo

Conversely, excellent organizational cultures are built around humility, respect, trust, collaboration, innovation, and empowerment. What behaviors would one expect to see within these organizations? How might their results differ from the results of organizations with weak cultures? Finally, what is at the foundation of these organizations so that they manage their culture rather than the culture managing them? In asking these questions, the Shingo Institute gained three important insights: ideal results require ideal behaviors, purpose and systems drive behavior, and principles inform ideal behavior.



THREE INSIGHTS OF ORGANIZATIONAL EXCELLENCE

1. Ideal Results Require Ideal Behaviors

The results of an organization depend on the way its people behave. To achieve ideal results, leaders must do the hard work of creating a culture where ideal behaviors are expected and evident in every team member.

2. Purpose and Systems Drive Behavior

It has long been understood that beliefs have a profound effect on behavior. What is often overlooked, though, is the equally profound effect that systems have on behavior. Most of the systems that guide the way people work are designed to create a specific business result without regard for the behavior that the system consequentially drives. Managers have an enormous job to realign management, improvement, and work systems to drive the ideal behavior required by all people to achieve ideal business results.

3. Principles Inform Ideal Behavior

Principles are foundational rules that govern consequences. The more deeply one understands principles, the more clearly he or she understands ideal behavior. The more clearly one understands ideal behavior, the better he or she can design systems to drive that behavior to achieve ideal results.

For any organization to be successful in the long term, it must be engaged in a relentless quest to make things better. Failure to make continuous improvement a priority will inevitably result in organizational decline. Similarly, excellence must be the pursuit of everyone. In fact, the passionate pursuit of perfection, even knowing it is fundamentally impossible to achieve, brings out the very best in every human being.



“Principles always have natural consequences attached to them. There are positive consequences when we live in harmony with the principles. There are negative consequences when we ignore them.”

~ Dr. Stephen R. Covey, author of the best-selling book
The 7 Habits of Highly Effective People

A large, dark blue diamond shape with a white border and a grey shadow, centered on the page. Inside the diamond, the words "GUIDING PRINCIPLES" are written in white, bold, uppercase letters.

**GUIDING
PRINCIPLES**

GUIDING PRINCIPLES

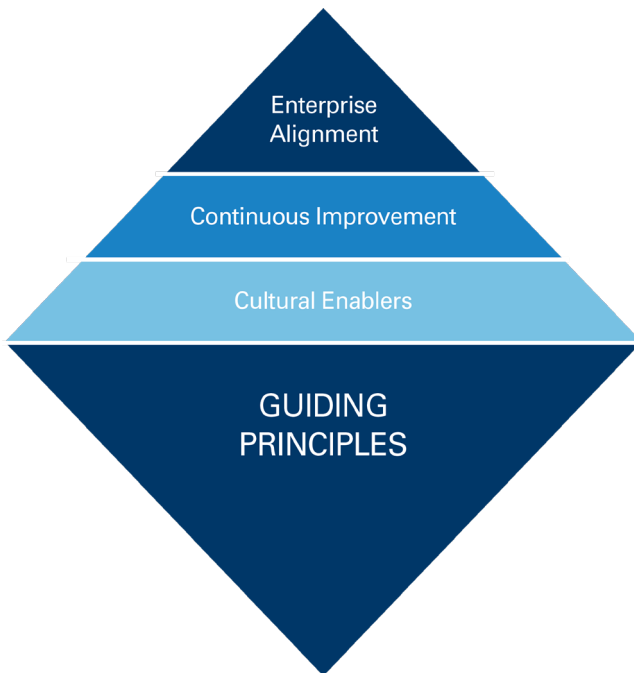
The *Shingo Guiding Principles* are ten principles that are the basis for building a sustainable culture of enterprise excellence. In the Guiding Principles diamond, the principles are divided into three dimensions. Each dimension and principle are discussed in further detail on the following pages.



Stephen R. Covey defined a principle as a natural law that is universally understood, timeless in its meaning, and self-evident. He taught that values govern actions but principles govern the consequences of actions.

The *Shingo Guiding Principles* are ten principles that are the basis for building a sustainable culture of enterprise excellence. They are respect every individual, lead with humility, seek perfection, embrace scientific thinking, focus on process, assure quality at the source, improve flow & pull, think systemically, create constancy of purpose, and create value for the customer.

Because Dr. Shingo encouraged us to think categorically, the principles are divided into three dimensions: Cultural Enablers, Continuous Improvement, and Enterprise Alignment.





LEARNING AND TEACHING THE PRINCIPLES

The first step a leader must take in leading a cultural transformation is understanding what each of the *Shingo Guiding Principles* means. It is impossible for a leader to lead the development of a principle-based culture until he or she has gone through the deep personal reflection required to begin a cultural transformation. This is no trivial task. Fully embracing these principles requires a fundamental re-thinking of the rules of engagement.

“There are three constants in life . . . change, choice, and principles.”

~ Dr. Stephen R. Covey, author of the best-selling book
The 7 Habits of Highly Effective People

At a minimum, leaders must be curious enough to experiment with the principle. John Shook, of the Lean Enterprise Institute, taught that it is impossible to “think our way into a new way of acting.” Rather, guided by correct principles, one may do, observe, learn, and then do something else until “we act our way into a new way of thinking.” By carefully analyzing the cause-and-effect relationship between principles and results, a leader will begin to shift beliefs about what drives optimal business performance. After gaining this new insight, it becomes the leader’s primary responsibility to see that others in his or her organization have experiences where they can gain the same insight.

Whether acknowledged or not, the *Shingo Guiding Principles* always govern the consequence of leadership and management behaviors. For example, if a leader allows a culture to emerge where employees are thought of merely as an unfortunate cost burden or where the smartest people are



the only ones who rise to the top, the consequence will be a workforce that is not fully engaged. Ideas for improvement will not be articulated and acted upon. People will feel unfulfilled in their work and turnover will be high. Labor costs will become excessively high, business systems will stagnate, and innovation will not be fast enough to compete in the rapidly changing business climate. Unwise leaders will see this as a validation of what they believe, rather than the disappointing end of a self-fulfilling prophecy.

Conversely, when people understand principles for themselves they become empowered to take personal initiative. Leaders who teach team members the principles behind the tools can be more confident that individual behavior will be pointed in the right direction. Leaders should also design systems that will make it easier for people to do the right thing consistent with the key behavioral indicator (KBI) identified. Principles will inform ideal behavior which will provide leaders with the ability to select KBIs that will move the organization's culture closer to the ideal.



ALIGNING SYSTEMS WITH PRINCIPLES

All work in an organization is the outcome of a system. Systems must be designed to produce a specific end goal, otherwise they evolve on their own. Systems create the conditions that cause people to behave in a certain way. One of the outcomes of poorly designed systems is enormous variation in behavior or even consistently bad behavior. Variation in behavior leads to variation in results. Organizational excellence requires ideal behavior that translates into consistent and ideal results.

The *Shingo Model* illustrates the critical need to align every management, improvement, and work system of the organization with the *Shingo Guiding Principles*. When systems are properly aligned with principles, they strategically influence people's behavior toward the ideal.



To learn more about the *Shingo Model*, the *Shingo Guiding Principles*, and the *Three Insights of Organizational Excellence*, attend the **DISCOVER EXCELLENCE** workshop, the prerequisite in the Shingo education series. Visit shingo.org/education for workshop dates and locations.



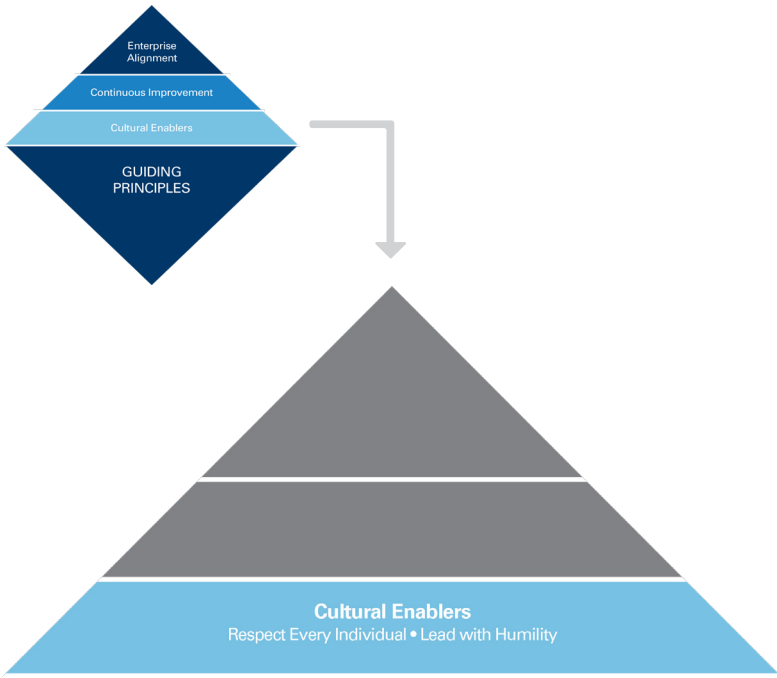
"I have a foundational belief that business results start with culture and your people."

~ Doug Conant, former CEO of Campbell Soup



CULTURAL ENABLERS

The first dimension of the Guiding Principles diamond consists of the Cultural Enablers principles of respect every individual and lead with humility. Cultural enablers are at the foundation of the pyramid because they focus on the foundation of an organization: its people.



RESPECT EVERY INDIVIDUAL

Respect must become something that is deeply felt for and by every person in an organization. Respect for every individual naturally includes respect for employees, customers, suppliers, the community, and society in general. Individuals are energized when this type of respect is demonstrated. Most team members will say that to be respected is the most important thing they want from their employer. When people feel respected, they give far more than their hands; they give their minds and hearts as well.

To better understand the principle of respect for every individual, simply ask the question "why?" The answer is because we are all human beings with worth and potential. Because this is true, every individual deserves respect.



Cultural Enablers Ideal Behaviors*

Coaching is consistent and evident throughout all levels of an organization.

Leadership is consistently and predictably engaged where the work happens.

All employees turn in suggestions.

Near-misses are captured and addressed immediately.

Decision-making is pushed down to the lowest level possible with feedback given for any decisions made.

**Note: The examples in the above list are not comprehensive or prescriptive.*

LEAD WITH HUMILITY

One common trait among leading practitioners of organizational excellence is a sense of humility. Humility is an enabling principle that precedes learning and improvement. A leader's willingness to seek input, listen carefully, and continuously learn creates an environment where team members feel respected and energized and will give freely of their creative abilities. Improvement is only possible when people are willing to acknowledge their vulnerability and abandon bias and prejudice in their pursuit of a better way.

CULTURAL ENABLERS SUPPORTING CONCEPTS

Assure a Safe Environment

There is no greater measure of respect for the individual than creating a work environment that promotes both the health and safety of employees and the





protection of the environment and the surrounding community. Environmental and safety systems embody a philosophical and cultural commitment that begins with leadership. When leadership is committed, the organization creates and supports appropriate systems and behaviors. In short, safety is first.

Develop People

People development has emerged as an important and powerful cultural enabler and goes hand-in-hand with principles of organizational excellence. Through people development, the organization creates “new scientists” who will drive future improvement. People development is more involved than simple classroom training. It includes hands-on experiences where people can discover new ideas in a way that creates personal insight and a shift in mindset and behavior.

An organization’s executives must be committed to developing people and expanding the knowledge base. Expenses for education and training are necessary investments for the long-term health of the organization. As such, executive commitment to this investment must not waver.

Empower and Involve Everyone

Cultural Enablers Systems*

- *Individual development*
- *On-the-job training or training within the industry (OJT/TWI)*
- *Coaching*
- *Standard daily management*
- *Leadership development*
- *Idea sharing*
- *Suggestion*
- *Reward and recognition*
- *Communication*
- *Environment, health, and safety (EHS)*
- *Education and training*
- *Community involvement*
- *Recruitment and succession planning*
- *Accountability*
- *Engagement and involvement*
- *Leader standard work*

**Note: The examples in the above list are not comprehensive or prescriptive. For clarification on systems, see pages 40-41.*



For an organization to be competitive, the full potential of every individual must be realized. People are the only organizational asset that has an infinite capacity to appreciate in value. The challenges of competing in global markets are so great that success can only be achieved when every person at every level of the organization is able to continuously innovate and improve. Elimination of barriers to that innovation is the responsibility of management.

Fundamental to the *Shingo Model* is the concept of teaching people the key principles (the “why”) behind everything they do. When people understand why, they become empowered to take personal initiative. Managing a team of people who share a deep understanding and commitment to the key concepts and principles is much easier than managing the work of those who are only doing what they are told to do. Empowered employees who understand relevant principles are far more likely to make good decisions about the direction and appropriateness of their improvement ideas.

Similarly, when employees have a clear sense of direction and strategy and have a real-time measure of contribution, they become a powerful force for propelling the organization forward.

A “Learning” Organization

The knowledge of an organization is the cumulative knowledge of its people. To have a “learning organization,” cumulative knowledge increases over time. As people solve problems, they discover better ways to do things and should share them across the organization. At that point, standard work must be adjusted accordingly.



To learn more about the first dimension of the *Shingo Model*, attend a **CULTURAL ENABLERS** workshop. Visit shingo.org/education for workshop dates and locations.



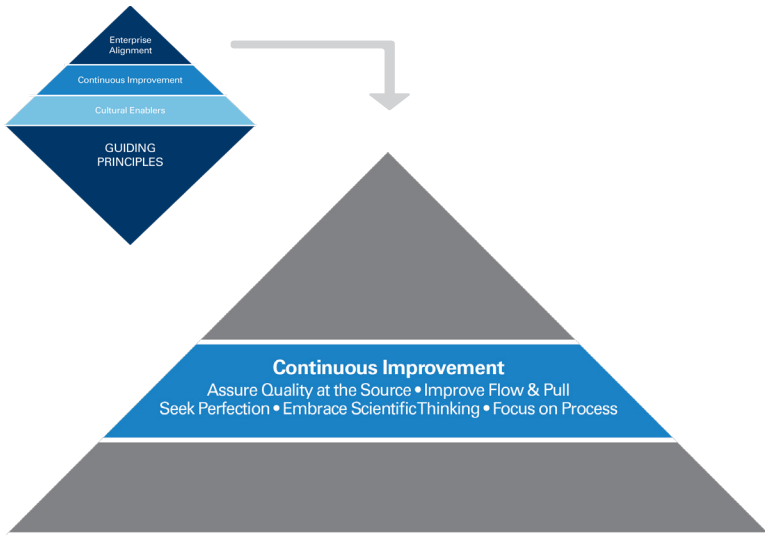
“Improvement means the elimination of waste, and the most essential precondition for improvement is the proper pursuit of goals. We must not be mistaken, first of all, about what improvement means. The four goals of improvement must be to make things easier, better, faster, and cheaper.”

~ Dr. Shigeo Shingo



CONTINUOUS IMPROVEMENT

Where the first dimension addressed the principles around the people of an organization, the second dimension in the Guiding Principles diamond addresses processes. In a culture of continuous improvement, the focus must not be only on quality or cost. The organization must incorporate all aspects of value as perceived by the customer: innovation, quality, cost, flexibility, quick delivery, and a comprehensive view of environment, health, and safety.



SEEK PERFECTION

Perfection is an aspiration not likely to be achieved, but the pursuit of perfection creates a mindset and culture of continuous improvement. What is possible is only limited by the paradigms through which we see and understand the organization's current reality.

EMBRACE SCIENTIFIC THINKING

Innovation and improvement are the consequence of repeated cycles of experimentation, direct observation, and learning. A relentless and systematic exploration of new ideas, including failures, enables us to constantly refine our understanding of reality.

FOCUS ON PROCESS

All outcomes are the consequence of a process. It is nearly impossible for even good people to consistently produce ideal results with poor processes. It is human nature to blame the people involved when something goes wrong or when the



resulting product or service is less than ideal. But in reality, an issue is usually rooted in an imperfect process, not in the people involved.

ASSURE QUALITY AT THE SOURCE

Perfect quality can only be achieved when every element of work is done right the first time. If a defect occurs in a product or service, it must be detected and corrected at the time it is created.

IMPROVE FLOW & PULL

Value for customers is highest when it is created in response to real demand and at a continuous and uninterrupted flow. Although one-piece flow is the ideal, demand is often distorted between and within organizations. Waste is anything that disrupts the continuous flow of value.

“Most of what we call ‘management’ consists of making it difficult for people to get their work done.”

~ Dr. Peter Drucker, management consultant, educator, and author

CONTINUOUS IMPROVEMENT SUPPORTING CONCEPTS

Stabilize Processes

Stability in processes is the bedrock foundation of any improvement system. It creates consistency and repeatability and is the basis for problem identification. Nearly all continuous improvement principles rely on stability because it is the precursor to achieving flow. Many of the rationalizations for waste are based on the instability of processes, as if they are beyond our control. Instead, organizations should apply the basic tools available to reduce or eliminate instability and thus create processes that help to identify and eliminate waste.



Standard Work

While stability is a necessary precondition for creating flow and improvement, creating standard work builds control into the process itself. Standard work is the supporting principle behind maintaining improvement rather than springing back to preceding practices and results. Standard work also eliminates the need to control operations through cost standards, production targets, or other traditional supervisory methods. When standard work is in place, the work itself serves as the management control mechanism. Supervisors are more free to work on other tasks when there is no need to monitor and control the work process.

“Where there is no standard, there can be no improvement. For these reasons, standards are the basis for both maintenance and improvement.”

~ Masaaki Imai, founder of the Kaizen Institute

Go & Observe

Direct observation is a supporting principle tied to scientific thinking. It is, in fact, the first step of the scientific method. Observation is necessary to truly understand the process or phenomenon being studied. All too frequently, perceptions, past experience, instincts, and inaccurate standards are misconstrued as reality. Through direct observation, reality can be seen, confirmed, and established.

Focus on Value Stream

Improve Flow & Pull combined with Focus on Process necessitates defining value streams and focusing on them. A value stream is the collection of all the necessary steps required to deliver value to the customer. Defining what customers value is an essential step in focusing on the value stream. Clearly understanding the entire value stream, however, is the only way for an organization to improve the value delivered and/or to improve the process by which it is delivered.



Keep It Simple and Visual

In society today we frequently see a bias toward complex solutions as well as a premium paid to those who seem to manage complexity well. But usually, better results at a lower cost can be achieved by simplification. Dr. Shingo's life work in mistake-proofing is centered on this principle.

Much of waste is the result of information deficits. Making information visual, when combined with simplification, solves the information deficits.

Identify and Eliminate Waste

Identification and elimination of waste is a practical concept for making processes flow, thus it becomes a primary focus of continuous improvement. Waste is anything that slows or disrupts the continuous flow of value to customers. Waste elimination is a powerful supporting principle because it is easily understood. Focusing on the elimination of waste will consistently drive appropriate behavior, while the wrong focus can frequently become a barrier to improvement. In the end, identifying and eliminating waste will engage the entire organization in the continuous improvement effort.

No Defect Passed Forward

The No Defect Passed Forward concept is essential for organizational excellence from many different points of view. From an executive's perspective, it requires great courage to stop the process long enough to understand the root cause and to take counter-measures that prevent the process from reoccurring. This often means trading any short-term loss for substantial long-term gain. From a manager's perspective, systems must be in place to ensure that any result that varies from the standard, even slightly, creates an expectation of and support for immediate action. This is often called "swarming." From a team member's point of view, no defect passed forward requires a mind-set of ownership and accountability. If standards are clearly defined, every person should know what good is. Executives and managers should role-model and then create the conditions for team members to develop the mind-



Continuous Improvement Ideal Behaviors*

Successes and failures are openly communicated.

Standard work is monitored and validated according to a schedule.

Improvement is part of the work and not an extra activity.

Flow is made visual.

Everyone is trained in a structured, scientific approach to problem solving; coaching is ongoing.

Go and observe is part of the leader standard work.

Everyone learns how to collect data by going to where the work happens.

Abnormal conditions are quickly recognized and reacted to.

Inventory is constantly minimized and viewed as waste, not as an asset.

Customers provide direct or real-time feedback.

**Note: The examples in the above list are not comprehensive or prescriptive.*

set of personal integrity. This means that no one would ever knowingly or willingly forward the outcome of their value contribution to someone else if it contained the slightest variation from the standard.

“Everything should be made as simple as possible, but not simpler.”

~ Albert Einstein

This supporting concept feeds the mind-set and tools of continuous improvement and creates the conditions for seeking perfection. It is possible to achieve perfection in the application of this concept.

Integrate Improvement with Work

As the migration toward a principle-based culture occurs, the activities and approaches for continuous improvement become part of the everyday work of every employee in an organization. Each person in an organization performs daily work. When improvement is integrated with work, each person naturally accepts responsibility for improvement of the daily work processes.

Executives are responsible for improving strategy-setting processes or perhaps resource-alignment processes. They are primarily responsible for deploying



mission-critical strategy and metrics into the organization so that every person not only has a clear line of sight to what matters most but are also motivated by the mission in a way that creates a compelling case for improvement.

Managers are responsible for improving quality systems, or performance development systems, or value stream flow.

Team members are responsible for improving their cycle times, or quality of work, or yields. They become "scientists" who continually assess the current state of their processes and pursue a better, future state that will enhance value (or eliminate waste) and thus, pursue perfection.

Integrating improvement with work is more than assigning responsibility; it entails the creation of standardized work that defines the necessary systems for improvement.

Continuous Improvement Sub-Systems

- *Voice of the customer*
- *Problem-solving (A3 Thinking, PDCA, DMAIC)*
- *Value stream mapping*
- *Total productive maintenance (TPM)*
- *Visual management*
- *5S methodology*
- *Supplier development*
- *Continuous improvement methodology*
- *Production Process Preparation (3P)*
- *Quick changeover or setup reductions (SMED)*
- *Error proofing/zero defects*
- *New market development and current market exploitation*
- *Quality function deployment, concurrent engineering, etc. for product development*



Continuous Improvement Sub-Systems*

(continued)

- *Design for manufacturability, testing, maintenance, assembly, i.e., making it simpler and easier to deliver best quality and the quickest, most reliable response to the customer at the lowest cost*
- *Engagement and involvement*

**Note: The examples in the above list are not comprehensive or prescriptive. For clarification on systems, see pages 40-41.*

Rely on Data and Facts

Dr. Shingo emphasized the importance of being data-driven in the pursuit of continuous improvement. He frequently shared examples of specific situations where data was collected, but the data was incorrect or wasn't actually used in the improvement process. He was adamant that the understanding of the actual process be so thorough that when implementing a change in the process, the improvement, as evidenced by the data, could be predicted. Thus, reconciliation would be required between the predicted results and the actual results, making the improvement process truly data-driven. Ultimately, when data is treated loosely or imprecisely, the tendency is to leave potential improvement on the table or, even worse, to not achieve any improvement at all.



To learn more about the second dimension, attend a **CONTINUOUS IMPROVEMENT** workshop. Visit shingo.org/education for workshop dates and locations.



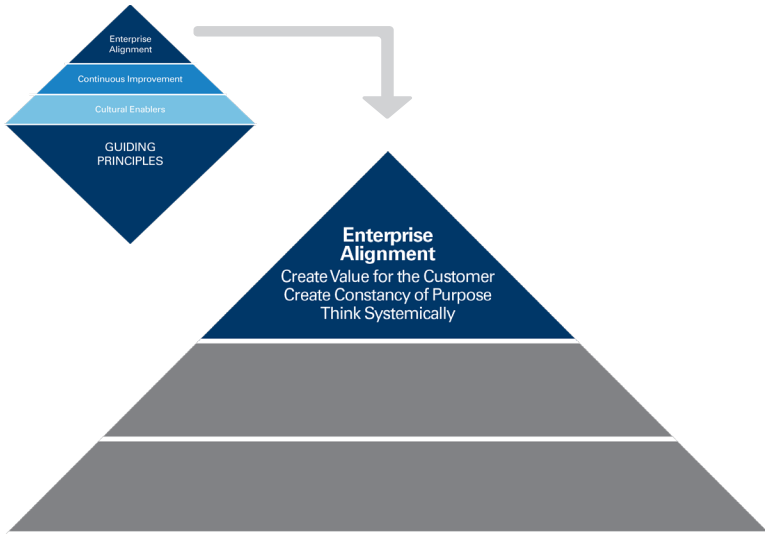
“Business and human endeavors are systems
... We tend to focus on snapshots of isolated
parts of the system and wonder why our
deepest problems never get solved.”

~ Dr. Peter Senge, senior lecturer at MIT
and author of *The Fifth Discipline*



ENTERPRISE ALIGNMENT

The preceding sections describe the first two dimensions of the Guiding Principles diamond regarding people and processes. The third dimension details the principles regarding the purpose of an organization. To achieve enterprise excellence, an organization must effectively align every value stream.



THINK SYSTEMICALLY

By understanding the relationships and interconnectedness of a system, people will make better decisions and improvements that will more naturally align with the desired outcomes of an organization.

CREATE CONSTANCY OF PURPOSE

An unwavering understanding of why the organization exists, where it is going, and how it will get there enables people to align their actions, as well as to innovate, adapt, and take risks with greater confidence.

CREATE VALUE FOR THE CUSTOMER

Ultimately, value must be defined through the lens of what a customer wants and is willing to pay for. Organizations that fail to deliver both effectively and efficiently on this most fundamental outcome cannot be sustained long term.



ENTERPRISE ALIGNMENT SUPPORTING CONCEPTS

See Reality

The ability to truly see reality is a very important concept. Most managers and executives consider themselves capable of seeing the world around them and assessing the current situation. However, people can have blind spots due to long-held paradigms, life experience, history, personal expectations, and more. Thus, the practice of Go & Observe was developed based on the principle that reality needs to be perceived using the five senses.

Most organizations create barriers that make it very difficult for people to see and tell the truth about what they see. A recently-retired U.S. senator wrote that, having traveled on numerous trips with other

Enterprise Alignment Ideal Behaviors

Everyone has a deep enough knowledge of the value stream to be able to understand processes upstream and downstream.

There is daily conversation about impact with internal and external customers.

Executives and managers coach team members to ensure a clear connection between purpose and the work being performed.

Goals are visual and understood, and everyone knows if they are winning or losing.





Enterprise Alignment Ideal Behaviors* (continued)

Executives hold to principles even during challenging times.

Visits by executives and managers to the place where work happens are frequent.

Team members are commonly sent to the customer site to understand how their product or service is used.

Customer expectations are clear and visual.

Improvement activities demonstrate a clear understanding of customer feedback.

Measures are simple and understood by all.

**Note: The examples in the above list are not comprehensive or prescriptive.*

“The most magnificent scheme in the world will be worthless if your perception of the current situation is in error.”

~ Dr. Shigeo Shingo

political and military leaders to areas of serious world conflict, his greatest disappointment was that all of their assessments of progress were greatly distorted from the actual data they observed.

Further, most organizations unintentionally build cultures that prevent the free flow of information that communicates an honest picture of reality. Max De Pree, former CEO of Hermann Miller said, “The first responsibility of a leader is to define reality.” For example, a leader must establish systems that make organizational performance and team member behavior transparent to all.

No leader can effectively lead without having a firm grasp of the current business realities.

Focus on the Long Term

Jeffrey K. Liker, award-winning author and professor at the University of Michigan, highlights the principle of long-term focus. He teaches that focusing on the long term provides a foundation of stability in the executive suite that can be achieved in no other way. When an organization is focused on the long term, it is more likely to make decisions that will pursue safety, quality, delivery, and cost rather than just monthly or quarterly financial targets or bonus cut-offs.



In conjunction with short- and medium-term priorities, thinking in terms of 20- to 50-year legacy goals significantly reduces the tendency for knee-jerk reactions to urgent pressures.

Align Systems

From the stakeholders' perspectives, the full potential is realized only when most critical aspects of an enterprise share a common platform of principles of operational excellence, management systems, and tools. While it is expected that organizations develop some unique elements of their local culture, it is also expected that principles become a common, unifying part of each locale. Top-level leadership, staff, and business processes should exemplify the same principles, systems, and tools as the operational components of the entire enterprise.

Enterprise Alignment Systems*

- *Strategy deployment*
- *Assessment*
- *Communication*
- *Customer relationship management (CRM)*
- *Information technology*
- *Accounting/finance*
- *Measurement*
- *Reporting/accountability*
- *Voice of the customer*
- *Visual management*
- *Risk management*
- *Human resource*
- *Governance*
- *Regulatory*
- *Project management*

**Note: The examples in the above list are not comprehensive or prescriptive. For clarification on systems, see pages 40-41.*





“It’s the easiest thing in the world to argue logically that something is impossible. It is much more difficult to ask how something might be accomplished, to transcend its difficulties, and to imagine how it might be made possible. Go all out in pursuit of ways to do the impossible.”

~ Dr. Shigeo Shingo

Align Behaviors with Performance

Ideal behavior drives long-term results. This happens when the systems are aligned with principles of operational excellence. Managers should help each person anchor their personal values with these same principles, because personal values are what ultimately drive individual behaviors. Executives are responsible for creating the environment and the process for people to evaluate their own values relative to the performance results required of the organization.

One business set a goal to reduce customer complaints only to find that as they did, they began to lose valuable customers. The measure drove behavior that made complaining such a painful experience that customers just stopped calling. A better goal might have been to increase the number of complaints so that every disappointment could be given an opportunity to be resolved.

Policy Deployment

Policy deployment is a planning and implementation system based on scientific thinking, employee involvement, and respect for the individual. At the strategy level, policy deployment provides leadership with the necessary principles, systems, and tools to carefully align key objectives and execution strategies. This empowers the organization, through cascading levels of detail, to achieve those objectives. Because so many people are involved, clarity is critical. An aligned strategy helps keep everyone on the same page and pointed in the same direction.



Standardized Daily Management

The concept of having some level of detailed work description for how to actually do daily work applies at all levels of an organization, even leadership. (Regardless of the perception among many executives, their work can and should be organized into standard components.)

Standard daily management creates a reference point from which continuous improvement can be based. Standard daily management can lead to greater process control, reduction in variability, improved quality and flexibility, stability (or predictable outcomes), visibility of abnormalities, clear expectations, and to a platform for individual and organizational learning. Standard daily management also enables creativity that is focused and controlled rather than ad hoc. Executives who follow and insist upon standard work send a clear message that no one is above continuous improvement.

Measure What Matters

Historically, organizations have tended to measure the things management needs to know to be able to plan, organize, and control. But widespread involvement is essential for continuous improvement and consistent performance. Therefore, it is important to define measures that matter to those who need and use them. Team members need different measures than managers who need to plan on a larger scale and executives who are responsible for the entire enterprise.

Measurements should directly tie to strategic priorities, are easy to capture, give timely feedback tied to the work cycle, and drive improvement. Ultimately, measurements should be created to ensure that everyone is focused on the appropriate strategic activities that drive continuous improvement to move the entire enterprise forward.

Identify the Customer

Although the traditional view of customers as immediate recipients of a product or service may be appropriate in some contexts, this view is often too narrow. In the context of the



Shingo Model, a customer may include multiple relevant stakeholders that span the supply and value chains and beyond. This view addresses the needs, wants, and sensitivities of producers or providers, as well as users, consumers, or recipients of products and services. It also includes those directly or indirectly impacted by the manufacture, distribution, use, or provision of a product or service. This may include individuals, policy makers, and the natural environment. This contemporary view of customers requires a balancing of stakeholder considerations and is consistent with increasing expectations that enterprises should be both socially and environmentally responsible.

Identify Cause-and-Effect Relationships

When drivers want to make a car go faster, they simply apply more pressure to the gas pedal. So, the “dial” is the speedometer. What moves the dial? Pressing on the gas pedal. Why does this work? Because there is a physical connection between the pedal, the engine, and the axle. This is a clear cause-and-effect relationship. To create value, organizations must discover similar cause-and-effect relationships to determine how goals can be achieved.



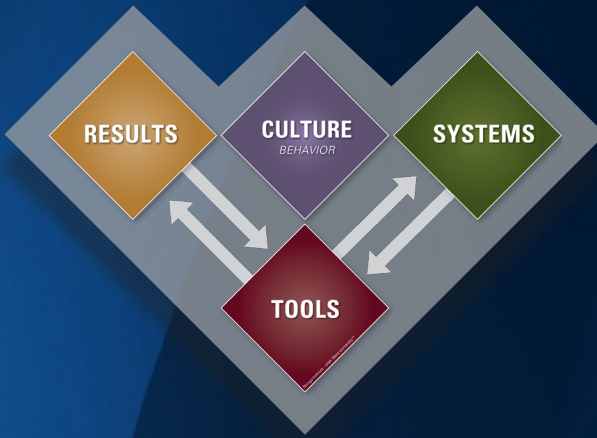
To learn more about the third dimension in the *Shingo Model*, attend the ENTERPRISE ALIGNMENT workshop. Visit shingo.org/education for workshop dates and locations.

To learn how all dimensions work together to build a culture of organizational excellence, attend the capstone workshop, BUILD EXCELLENCE. Visit shingo.org/education for workshop dates and locations.



“An organization moves closer to excellence as it achieves its desired results as an outcome of behaviors, driven by systems that can sustain not only the results but also the culture that created them.”

~ Shingo Institute



SYSTEMS, TOOLS, RESULTS, AND CULTURE

The final four diamonds on the *Shingo Model*—Systems, Tools, Results, and Culture—are critical to the long-term success of an organization. Together, they drive behavior ever closer to the ideal and to a sustainable culture of organizational excellence.



TOOLS

A tool is a point solution or a specific means to an end. Dr. Shingo described the concept of a tool as a technique for solving a specific problem, necessary but not sufficient by itself to solve broader problems. Tools should be selected to enable a system to perform its intended purpose. They should be eliminated or changed when the tool is no longer needed or fails to be the best solution.

One common mistake made by organizations is focusing too heavily on a specific tool-set as the basis for improvement efforts. Tools do not answer the question "why," they only focus on "how." But knowing the "how" without understanding fully the "why" often leaves team members waiting for instructions, powerless to act on their own.

Conversely, when team members understand how the tools they use serve the system as a whole and help achieve its purpose, they are better able to use the tools toward the desired outcome. In other words, if they understand why the tool is important to the system, they can use the tool in alignment with the purpose of the system. It is an important form of empowerment for team members.



SYSTEMS

Think of a system as a collection of tools working together to accomplish an intended outcome. W. Edwards Deming, author of *Out of the Crisis*, defined a system as "a network of interdependent components that work together to try to accomplish the aim of the system. The aim of the system must be clear to everyone in the system."

A successful enterprise is usually made up of complex systems that can be divided into layers of management, improvement, and work systems, each containing the necessary



communication tools and system components to enable the successful outcome of the system. Successful outcome is defined in both performance and behavioral terms.

The primary role of managers must shift from firefighting to designing, aligning, and improving systems. To this end, the Shingo Institute defines three types of systems—management systems, improvement system and its sub-systems, and work systems. Each system has a specific focus. Management systems focus on leading the organization by developing system leaders, improvement systems focus on making the organization better, and work systems focus on improving the workflows. Critical components and tools have also been defined for creating a structure that is robust and sustainable.



RESULTS

The focus of most leadership is on what many consider to be their key responsibility: results (commonly referred to as key performance indicators or KPIs). Please do not misunderstand.

An organization must have performance results to succeed. Value needs to be considered from the perspective of the customer, rather than from enterprise leadership. But lagging indicator KPIs are usually what an organization uses as measurements of behavior and, therefore, culture.

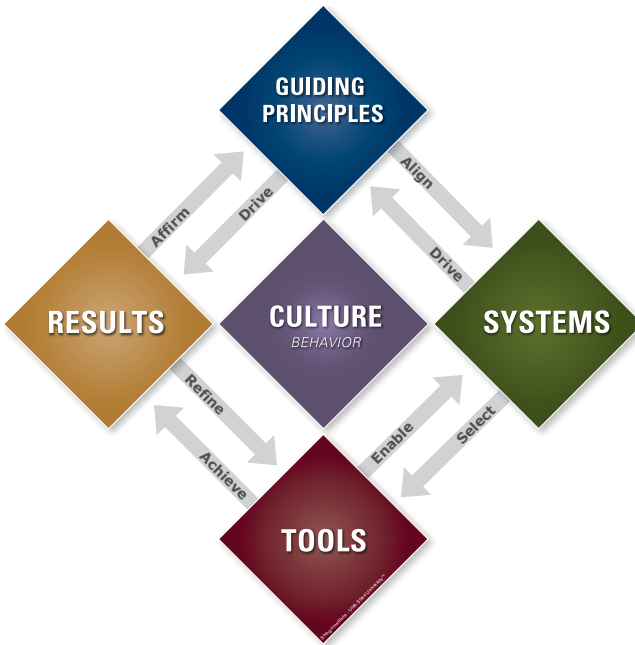
It is important to differentiate between leading and lagging indicators. Leading indicators are generally described as, or are closest to, behavior. Whereas, lagging indicators measure performance results. The indicators used to influence and change behavior and culture are generally different from, but connected to, the ones that report the performance of an organization or KPIs on which leadership is measured. Simply put, when it comes to sustainability and enterprise excellence, how an organization achieves the result (behavior) is just as important as the result itself (KPI).



CULTURE

The foundation of an enterprise is culture, and it is at the heart of the entire *Shingo Model*. All the guiding principles need to be embedded into the culture. Principles inform ideal behaviors, or what becomes the behavioral goals. Cultural transformation requires a shift in behaviors and the systems that drive behavior. Therefore, systems need to align with the principle through the ideal behaviors they inform, shifting the culture ever closer to ideal behavior. In the end, an organization will most likely need to adjust old systems, create new systems, and eliminate systems that no longer drive desired behavior or are misaligned. Focusing only on KPIs means that the enterprise is focused on the short term. It is not sustainable. It tends to focus on fighting fires in order to provide short-term results. However, if an organization creates a principle-based culture, it focuses on both KPIs and KBIs. Principle-based cultures are focused on the long term. When an organization is long-term focused, it drives improved KPIs through improving KBIs.

An enterprise that does not operate on principles operates on an ever-growing set of policies. The enterprise becomes overwhelmed with an overabundance of unnecessary control systems that police team members rather than empower them. In the end, the principle-based cultural shift encompasses and consumes all systems, tools, and results, whereas a policy-based structure controls systems. That is simply not acceptable because control costs too much. An organization needs a long-term, principle-based culture in order to drive sustainable organizational excellence.



SUMMARY OF THE *SHINGO MODEL*

Organizational excellence is the vision many organizations use to drive improvement. Real change is only possible when leaders understand the timeless principles of organizational excellence and embed them in the organization's culture. Leaders must drive principles and culture while managers must design and align systems to drive ideal, principle-based behavior. Involvement of the entire organization—every team member—is essential for genuine, sustainable improvement.

Each of the four remaining components of the *Shingo Model*—systems, tools, results, and culture—should be influenced by the principles. Culture is the sum of all behaviors in an organization. Systems drive behavior and, if aligned to principles



“A relentless barrage of ‘why’ is the best way to prepare your mind to pierce the clouded veil of thinking caused by the status quo. Use it often.”

~ Dr. Shigeo Shingo

through the ideal behaviors they inform, systems will drive behavior ever closer to ideal. Systems will make it easier to do the right thing, or the thing the system was designed to do in the first place.

The closer an organization moves toward ideal behavior the better the principle drives results. Therefore, the results achieved affirm the correctness of the behavior informed by the principle. Finally, systems select the tools needed to enable the system to achieve results. The level of results achieved determines if the tools need to be refined within the system.

The *Shingo Model* provides the framework for any organization or industry to transform its organizational culture. The Shingo Prize assessment, based on the *Shingo Model*, is a standard of excellence for organizations to leverage their strengths and opportunities. Regardless of whether an organization challenges for the Shingo Prize or not, the real prize from embracing the *Shingo Model* is a sustainable culture of organizational excellence.



SHINGO WORKSHOPS

The Shingo workshops help attendees gain a deeper understanding of the *Shingo Model*. These workshops teach the ideal behaviors necessary to achieve ideal results within an organization.



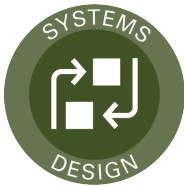


DISCOVER EXCELLENCE

This foundational, two-day workshop introduces the *Shingo Model*, the *Shingo Guiding Principles*, and the *Three Insights of Organizational Excellence*. With active discussions and on-site learning at a host organization, this program is a highly interactive experience. It is designed to make your learning meaningful and immediately applicable as you discover how to release the latent potential in an organization to achieve organizational excellence. It provides the basic understanding needed in all Shingo workshops; therefore, it is a prerequisite to all the other workshops and concludes with the BUILD EXCELLENCE workshop.

As a participant, you will:

- Learn and understand the *Shingo Model*.
- Discover the *Three Insights of Organizational Excellence*.
- Explore how the *Shingo Guiding Principles* inform ideal behaviors that ultimately lead to sustainable results.
- Understand the behavioral assessment process through an interactive case study and on-site learning.



SYSTEMS DESIGN

This two-day workshop integrates classroom and on-site experiences at a host facility to build upon the knowledge and experience gained from the DISCOVER EXCELLENCE* workshop, and focuses on the Systems and Tools diamonds in the *Shingo Model*. It begins by explaining that all work in an organization is the outcome of a system. Systems must be designed to create a specific end objective; otherwise, they evolve on their own. Systems drive the behavior of people, and variation in behavior leads to variation in results. Organizational excellence requires well-designed systems to drive ideal behaviors that are required to produce sustainable results.

In this workshop, you will:

- Discover the three types of essential systems.
- Explore the five required communication tools for each system.
- Learn how to create and use system maps.
- Understand system standard work and how it drives improvement.

*DISCOVER EXCELLENCE is a prerequisite to this workshop.



CULTURAL ENABLERS

This two-day workshop integrates classroom and on-site experiences at a host facility to build upon the knowledge and experience gained from the DISCOVER EXCELLENCE and SYSTEMS DESIGN* workshops. It takes you deeper into the *Shingo Model*

by focusing on the principles identified in the Cultural Enablers dimension:

- Respect Every Individual
- Lead with Humility

Cultural Enablers principles make it possible for people in an organization to engage in the transformation journey, progress in their understanding, and build a culture of organizational excellence. Organizational excellence cannot be achieved through top-down directives or piecemeal implementation of tools. It requires a widespread organizational commitment. The CULTURAL ENABLERS workshop will help you define ideal behaviors and the systems that drive them by using behavioral benchmarks.

*DISCOVER EXCELLENCE and SYSTEMS DESIGN are prerequisites to this workshop.



CONTINUOUS IMPROVEMENT

This two- or three-day workshop integrates classroom and on-site experiences at a host facility to build upon the knowledge and experience gained from the DISCOVER EXCELLENCE and SYSTEMS DESIGN* workshops. It begins by teaching

you how to clearly define value through the eyes of your customers. It continues the discussion about ideal behaviors, fundamental purpose, and behavioral benchmarks and takes you deeper into the *Shingo Model* by focusing on the principles identified in the Continuous Improvement dimension:

- Seek Perfection
- Embrace Scientific Thinking
- Focus on Process
- Assure Quality at the Source
- Improve Flow & Pull

The CONTINUOUS IMPROVEMENT workshop will deepen your understanding of the relationship between behaviors, systems, and principles, and how they drive results.

*DISCOVER EXCELLENCE and SYSTEMS DESIGN are prerequisites to this workshop.



ENTERPRISE ALIGNMENT

This two-day workshop integrates classroom and on-site experiences at a host facility to build upon the knowledge and experience gained from the DISCOVER EXCELLENCE and SYSTEMS DESIGN* workshops. It takes you deeper into the *Shingo Model* by focusing on the principles identified in the Enterprise Alignment dimension:

- Think Systemically
- Create Constancy of Purpose
- Create Value for the Customer

To succeed, organizations must develop management systems that align work and behaviors with principles and direction in ways that are simple, comprehensive, actionable, and standardized. Organizations must get results, and creating value for customers is ultimately accomplished through the effective alignment of every value stream in an organization. The ENTERPRISE ALIGNMENT workshop continues the discussion around defining ideal behaviors and the systems that drive them.

*DISCOVER EXCELLENCE and SYSTEMS DESIGN are prerequisites to this workshop.



BUILD EXCELLENCE

This two-day capstone workshop integrates classroom and on-site experiences at a host facility to solidify the knowledge and experience gained from the previous five Shingo workshops. The BUILD EXCELLENCE* workshop demonstrates the integrated relationships and execution of principles, systems, and tools that drive behavior in a culture toward the ideal while achieving desired results. The workshop addresses the *Shingo Model* in its entirety by developing a structured approach that will accelerate a cultural transformation.

In this final Shingo workshop, you will:

- Discover how the *Shingo Model* strengthens the execution of your strategy.
- Learn how to shift your culture, guided by organizational purpose, to the next level.
- Use Go & Observe to understand the practical application of the *Shingo Model*.
- Accelerate your cultural transformation by applying the learnings gained from the *Shingo Model* into a PDCA cycle.

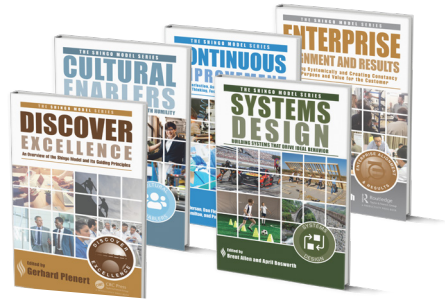
*All Shingo workshops are prerequisites to this capstone workshop. Individuals that complete the full workshop series will become Shingo Alumni.



SHINGO MODEL BOOK SERIES

In conjunction with the Shingo Workshop series, the Shingo Institute has set out to publish six books in the *Shingo Model* series. Naturally, the *Shingo Model*, its *Guiding Principles*, and the *Three Insights* are best understood as a whole, but breaking them into individual books accomplishes an important purpose (just as the workshops are broken into individual parts). Seen individually, each book is designed to enhance your understanding of each aspect of the *Shingo Model* and how they interrelate with and complement the other parts.

Cultural Enablers, *Continuous Improvement*, and *Enterprise Alignment and Results* are focused on the primary components of the *Shingo Model* and the ten *Shingo Guiding Principles*. *Systems Design: Building Systems that Drive Ideal Behavior* details the three essential systems—work, improvement, and management—as well as the five required communication tools that are necessary to improve an organization.



As of this printing, five books in the series—*Discover Excellence*, *Systems Design*, *Cultural Enablers*, *Continuous Improvement*, and *Enterprise Alignment*—are available for purchase.

To learn more about each book and to purchase a copy, visit shingo.org/books.



Alumni Benefits

- *Recognition at Shingo Awards Gala*
- *Discount to Shingo conferences/summits*
- *Name and company listed on Shingo website*
- *Shingo Alumni graphic for email signature line and business cards*

SHINGO ALUMNI

Individuals that complete the Shingo workshop series are inducted into an elite group of Shingo Alumni. They earn this recognition by applying what they learned in the workshops and by implementing systems that help to drive their cultural transformation. A Shingo Alum's cultural transformation is highlighted by measured improvement in key performance indicators driven by the appropriate behaviors.

To apply for Shingo Alumni recognition, visit shingo.org/alumni.





LICENSED AFFILIATES

Shingo Licensed Affiliates are organizations that are well-established in targeted regions around the world and are heavily involved in leading organizations to organizational excellence through cultural transformation.

Affiliates are also well-versed in the *Shingo Model* and assessment methodology and are authorized to teach the Shingo workshops.





LICENSED AFFILIATES

Each affiliate has years of teaching experience and a wide array of expertise. An affiliate is available to help you on your Shingo journey in almost any country or language. They teach the Shingo workshops as scheduled events available to the general public or as exclusive workshops for private groups.

To learn more about each affiliate, visit shingo.org/affiliates.

		
4results.pl	advitria.com	alphadi.de
		
bcvlean.com	beexcellent.pt	blomconsultancy.nl
		
bpi-group.com.ua	campuslean.com/en	gaticonsultoria.com.br
		
gbmp.org	gohkpo.com	iversonconsultinggroup.com
		
impactperformancesolutions.com	impaxgroup.com.au	



		
keysenseconsulting.com	legup.solutions	lensys.mx
		
manufacturersnetwork.co.uk	mckinsey.com	mobius.eu
		
odysseyalliance.com.au	opexacademy.net	pxsglobal.com
		
sapartners.com/shingo	sisug.com	manufacturinginstitute.co.uk
		
theyurigroup.com	unopro.com.tr	valuecapturellc.com
		
xcelliumconsulting.com	xi-horizons.com	6-sigma.com.cn
<p>LICENSED ONLINE PROVIDER</p> <p>Visit myeducator.com to view select online content.</p>  <p>myeducator.com</p>		



SHINGO MBA

In conjunction with the Utah State University Master of Business Administration, the Shingo Institute administers a concentration in Operational Excellence, known as the Shingo MBA.



SHINGO MBA

The Shingo MBA is an online program where students gain a deep understanding of the *Shingo Model* and the principles and behaviors necessary to make operational excellence sustainable.

The Operational Excellence concentration requires students to complete all six of the Shingo workshops and participate in them alongside working professionals. Students also complete an improvement project that is administered within their own organization and are assigned a mentor among the experienced Shingo examiners. This gives each Shingo MBA student the opportunity to connect with a senior, experienced Shingo leader.

To apply their knowledge to the real world, students are given the opportunity to participate in a virtual study tour of organizations that are currently using the *Shingo Model* to drive significant improvements in their organizations.

Finally, along with registration to Shingo conferences, summits, and other popular events, the Shingo MBA program allows students the rare opportunity to observe a Shingo site assessment where Shingo examiners assess the achievements of Prize-challenging organizations.

The AACSB-accredited degree can be completed in as little as two years. Applications are accepted throughout the year. Students may begin their program at the start of any semester.

To learn more about the Shingo MBA, visit huntsman.usu.edu/mba/shingo-online-mba.

If you would like to donate to the Ritsuo Shingo Memorial Endowed Scholarship, which is awarded to a Shingo MBA student, visit usu.edu/shingomemorial.



SHINGO EVENTS

The Shingo Institute hosts a variety of events designed to bring together leaders, managers, and team members to network and learn from transformational experts and thought leaders from around the world.



SHINGO CONFERENCES AND SUMMITS

Shingo conferences and summits highlight Shingo recipient organizations, thought leaders, and industry experts who share their experience using the *Shingo Model* and how they shape cultures that drive organizational excellence.

Each event offers a selection of workshops, site tours, keynote speakers, and breakout sessions designed to provide ongoing knowledge, insight, and experience for organizations in their pursuit of organizational excellence. They are the perfect opportunity to network with leaders and managers who are all striving to improve their organizations.

SHINGO STUDY TOURS AND SHOWCASES

Shingo Study Tours and Shingo Showcases allow participants to see organizational culture through the lens of the *Shingo Model*. Participants will experience first-hand what is at the heart of this enterprise excellence model by benchmarking host companies, speaking with company leaders, and peer networking. Participants will see the tools, systems, and behaviors of operational and organizational excellence in action. Private Study Tours and Showcases can be customized to your request.

SHINGO PRINCIPLES PODCAST, WEBINARS, AND THE SHINGO BLOG

The Shingo Principles Podcast and webinars provide ways for attendees to engage with thought leaders and practitioners from around the world that are experienced in transforming cultures using the *Shingo Model*. Guests also write an article highlighting their experience using the *Shingo Model*, which is then posted on the Shingo blog.

To learn more about future events, visit shingo.org/events.



SHINGO INSIGHT

Shingo Insight enables organizations to regularly evaluate themselves to determine if the changes they are making to their systems are actually changing their cultures.



SHINGO INSIGHT

The Shingo Institute has been assessing organizational performance for more than 30 years and has developed a methodology for determining the degree to which an organization believes the behaviors of its executives, managers, and team members are aligned with the principles of the *Shingo Model*. It is a methodology that measures the attitudes and behaviors of employees in an organization. This web-based self-assessment helps managers improve the consistency of their execution and performance by measuring specific benchmark behaviors based on the *Shingo Guiding Principles*.

Why Measure Behavior

The way people behave when they come to work has a direct impact on the bottom line of every organization. Successful organizations have systems that drive culture ever closer to ideal behavior and ideal results. The desired outcome of aligning behaviors with principles of organizational and operational excellence results in greater value for customers.

Applying Shingo Insight in Your Organization

The interactive report from the Shingo Insight self-assessment gives you a good idea of where and what to focus on next in your organization's improvement efforts.

The results will enable you to:

- Understand gaps
- Create a culture baseline
- Measure the satisfaction and engagement of your people
- Gather feedback from employees
- Prepare to challenge for the Shingo Prize

To learn more about Shingo Insight,
visit shingo.org/insight-assessment.



"The *Shingo Guiding Principles*, founded in logic and built over time, have assisted us in moving further toward operational excellence. As we adapted our site to align with these principles, we found ourselves doing things that just make sense. This is testament to the power of the principle-led approach."

- Pat Kealy, Manager of Operations, Abbott Vascular Division Clonmel
2014 Shingo Prize Recipient



SHINGO AWARDS

Originating in 1988, the Shingo Prize has become the world's highest standard for organizational excellence.



SHINGO AWARDS

As an effective way to benchmark progress toward organizational excellence, organizations throughout the world challenge for the Shingo Prize. Originating in 1988, the Shingo Prize has become the world's highest standard for organizational excellence. This is in response to a systematic process of "raising the bar," which began in 2008 after a deep study regarding the necessary components of creating a culture that is able to sustain improvements and consistently drive results. Focus shifted from an emphasis on tool and programmatic assessment toward a complete assessment of an organization's culture.

Volunteer Shingo examiners now focus on determining the degree to which the *Shingo Guiding Principles* are evident in the behavior of every employee. They observe behavior and determine the frequency, duration, intensity, and scope of the desired principle-based behavior.

They observe the degree to which leaders are focused on principles and culture, and managers are focused on aligning systems to drive ideal behaviors at all levels. This focus is the most rigorous way of determining if an organization is fundamentally improving for the long term or just going through the motions of another short-term initiative. Recipients of Shingo recognition fall into three categories: Shingo Prize, Shingo Silver Medallion, and Shingo Bronze Medallion.



Shingo Prize

The Shingo Prize is awarded to an organization that is mature in its transformation. It has incorporated a strong organizational purpose that is realized by robust key systems that drive behavior and results closer to ideal, as informed by the *Shingo Guiding Principles*. Systems make it easier to do the right thing and difficult to do the wrong thing. These systems, enabled by appropriate tools, are producing ever improving behaviors and results. Engagement in fulfilling organizational purpose is constant, committed, and passionate at all levels. Improvement is seen as part of the work. The



organization's achievements are evident as measured by the frequency, intensity, duration, scope, and role of its behaviors as well as by the stability, trend/level, alignment, and improvement of its results. A Shingo Prize-recipient organization shows the greatest potential for sustainability.



Shingo Silver Medallion

The Shingo Silver Medallion is awarded to an organization that is well along its cultural transformation path. The organization is appropriately focused on key systems, using tools to enable them and drive desired behaviors, as informed by the *Shingo Guiding Principles*. As its results continue to improve, the organization is moving toward achieving its well-defined organizational purpose. Systems are beginning to make it easier to do the right thing. Improvement is becoming part of the work. The organization's achievements are evident as measured by the frequency, intensity, duration, scope, and role of its behaviors as well as by the stability, trend/level, alignment, and improvement of its results.



Shingo Bronze Medallion

The Shingo Bronze Medallion is awarded to an organization that is at the developmental stage of its cultural transformation. Implementing improvement tools as the primary drivers of results has progressed within the organization. Behaviors, as informed by the *Shingo Guiding Principles*, are beginning to be better understood and identified, and the organization is working to stabilize both behaviors and results. The organization is focused on making improvement part of the work. The organization's achievements are evident as measured by the frequency, intensity, duration, scope, and role of its behaviors as well as by the stability, trend/level, alignment, and improvement of its results.

Most organizations do not wait until they believe they might qualify for the Shingo Prize to challenge. They challenge for the Prize so they can have a team of organizational excellence



experts, Shingo examiners, visit the organization and evaluate its culture and performance. Other organizations do not intend to challenge for the Prize, but they use the *Shingo Model* and the assessment process to measure themselves as they work toward the highest standard of excellence in the world to which they can aspire.

To learn more about challenging for the Shingo Prize, visit shingo.org/challengefortheprize.



Shingo Publication Award

The Shingo Publication Award recognizes and promotes writing that has had a significant impact and advances the body of knowledge regarding organizational excellence. Submissions for this award either contribute substantial new knowledge and understanding of organizational excellence, or offer a significant extension of existing knowledge and understanding of organizational excellence. The types of accepted submissions include books or monographs, published articles, case studies, and applied publications/multimedia programs.

To learn more about the Shingo Publication Award, visit shingo.org/awards/publication-award.



Shingo Research Award

The Shingo Research Award recognizes and promotes research and writing that advances the body of knowledge regarding organizational excellence. Submissions for this award either contribute substantial new knowledge and understanding of operational excellence, or offer a significant extension of existing knowledge and understanding of operational excellence. The types of accepted submissions include books or monographs, published articles, and case studies.

To learn more about the Shingo Research Award, visit shingo.org/awards/research-award.



RECENT SHINGO PRIZE RECIPIENTS

2024

Baxter, Hillrom SAS, Pluvigner, Brittany, France
Ipsen Manufacturing Ireland Ltd., Dublin, Ireland

2023

Abbott Logistics Breda, Breda, North-Brabant, Netherlands
BHP Escondida, Cathodes, Antofagasta, Chile
Jabil Circuit Shanghai Ltd., Shanghai, China

2022

Abbott Nutrition Supply Chain, One India Enterprise, Mumbai
and Jhagadia, India
Codelco Radomiro Tomic Dry Area, Calama, Antofagasta, Chile
Hologic, Coyol, Costa Rica

2021

Jabil Healthcare, Bray, Dublin, Ireland

2020

Abbott Nutrition Supply Chain, One China Enterprise, Shanghai,
Jiaxing, China
Ipsen Pharma Biotech, Signes, SUD, France



RECENT SILVER MEDALLION RECIPIENTS

2024

Jabil Baja Plant 3, Tijuana, Baja California, Mexico

2022

Bell Chihuahua, Chihuahua, México

ICU Medical, La Aurora, Heredia, Costa Rica

Boston Scientific Arden Hills Operations, Arden Hills, Minnesota,
USA

Abbott Diabetes Care, Donegal, Ireland

2020

Boston Scientific, Clonmel, Ireland

Edwards Service Technology Center, Jhunan, Taiwan



RECENT BRONZE MEDALLION RECIPIENTS

2024

Plamex, S.A. de C.V., Tijuana, Baja California, Mexico

Zimmer Switzerland Manufacturing GmbH, Winterthur,
Switzerland

2023

Minsur, Pisco, Ica, Perú

Moog Medical Devices SRL, Coyol, Alajuela, Costa Rica

Plamex, S.A. de C.V., Tijuana, Baja California, Mexico

2020

Edwards Service Center Technology Center, Cheonan, Korea

For the list of Publication and Research Award recipients, visit shingo.org/awards/publication-award or shingo.org/awards/research-award.



SHINGO EXECUTIVE ADVISORY BOARD

The Shingo Executive Advisory Board consists of outstanding leaders from a wide variety of organizations and industries who have established themselves in their careers as principle-centered leaders building cultures of excellence.

Joanne Deys

Executive VP, Strategic Partnering
Ozgene Pty Ltd

Evelyn Ferrer

Sr. Director of Operations - LATAM
Jabil

Sandrine Garcia

Site Director
Ipsen Signes

Tony Hayes

Global Operations Director
ITW

Michelle Lue-Reid

Chief Transformation Officer
Independent Consultant

Kevin McNamara

President & CEO
TIDI Products, LLC

Sheila Montney

CEO & Managing Partner
Win Together, LLC

Torbjørn Netland

Chair of Production & Operations
Management
ETH Zürich

Mauro Neves de Moraes

CEO & Managing Director
Incitec Pivot Limited

Kieran Noonan

Chairman
Irish Centre for Business Excellence

Gary Peterson

Executive Vice President, Supply
Chain & Production
O.C. Tanner Company

Matt Pollard

Vice President, Clinical Programs
INTEGRIS Health

Adrian Siller Garza

CEO
SISAMEX

Ken Snyder

Executive Director
Shingo Institute

Rebeca Teeters

SVP, Chemical Operations &
Fluromaterial Stewardship
3M Corporate HQ.

John Toussaint

Chairman
Catalysis Inc.

Brad Winn

Professor & MBA Director
Utah State University

Heidi Wirtz

Sr. Director, OpEx Process and
Leadership Excellence
Medtronic



The Shingo Institute is part of the Jon M. Huntsman School of Business at Utah State University and is named after Japanese industrial engineer Dr. Shigeo Shingo.

shingo.org

Shingo Institute
3521 Old Main Hill
Logan, Utah 84322
USA

Jon M. Huntsman School of Business
Shingo Institute
UtahStateUniversity.

