

AdaptAir™

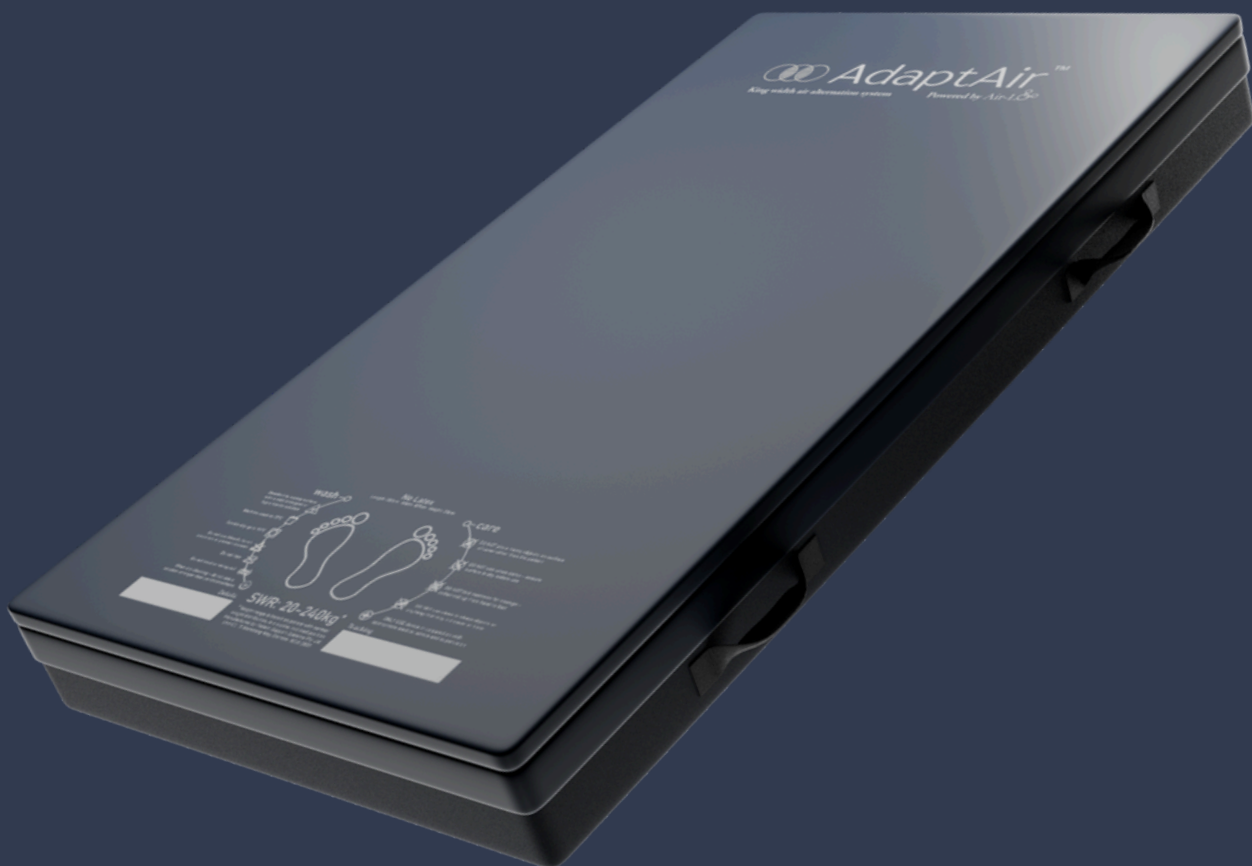
Powered by Air-Lo®

The Original Adaptive Therapy System

by



Studio Care



- **Customisable alternating air mattress system.**
- **Addressing Patients changing clinical needs as they occur.**
- **4x mattress systems in one, with variable comfort.**
- **Remote smart monitoring.**
- **Available in 2-in-1 or 3-in-1**

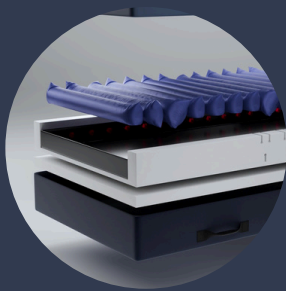


The AdaptAir™ Air Mattress System offers support and comfort when & where pressure care needs change.

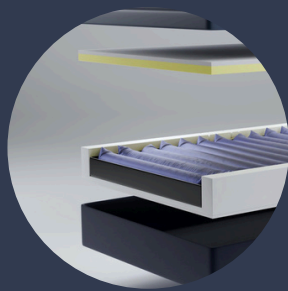
AdaptAir™ was developed through years of consultation with allied health professionals and end users. We understand the complexities of prescribing a therapeutic mattress—especially as needs evolve over time. *AdaptAir™* gives you the flexibility to customise the surface as clinical, comfort, and mobility requirements change. Prioritising individualised, client-centric therapy management plans

Customise the Sleep Surface

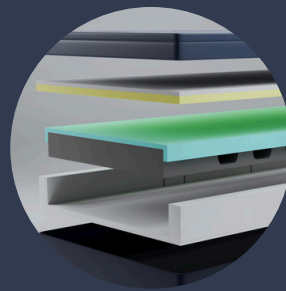
The *AdaptAir™* will evolve when you need it to.



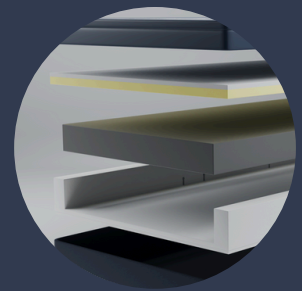
Full Air



Full Air-Comfort



Hybrid-Air



Full Foam

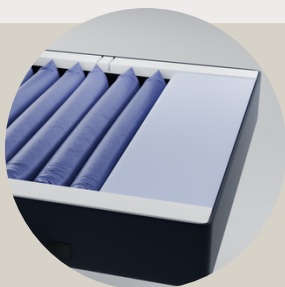
Features

- Modular, configurable design to adapt with pressure care needs.
- Strong, high-density foam sidewalls for safe entry/exit.
- Seven interchangeable comfort and pressure care layers.
- Detachable 5" air cells to offload high-risk areas. Targeted pressure care regimen
- Quiet and powerful pump for effective blood flow therapy.
- Air flow to the sacral cells for enhanced protection against 'bottoming out'.
- Welded outer Dahlia Bi-Elastic stretch covers for ICU level infection control.
- Optional bamboo cover for static mattress.
- Widths: Half Queen (76cm), Single Long (90cm), King Single (106cm), Long Double (138cm), Queen (153cm), and custom sizing.
- Incline mode with Auto Tilt Sensor.
- Bluetooth controlled pressure care from phone or tablet.
- Wifi remote monitoring for constant care attention.

Adaptive Therapeutic Mattress System

The strength of the **AdaptAir™** mattress system lies in its truly customisable design—offering four interchangeable therapeutic surfaces that can evolve with the client's clinical, comfort, or mobility needs.

*Studio Care understands the ongoing challenges involved in prescribing the right solution for clients with evolving needs. The **AdaptAir™** mattress system is designed with long-term flexibility in mind—recognising that clinical or functional changes can occur not long after an initial decision is made. **AdaptAir™** can be reconfigured in-situ by a trained technician, without the need to remove the mattress from the client's home.*



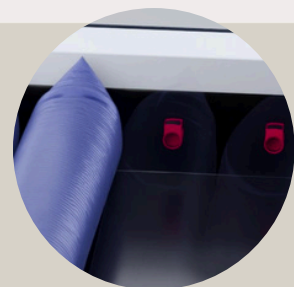
Zoned Options

- The **AdaptAir™** mattress system allows individual air cells to be isolated, enabling targeted therapy in specific zones as determined by the clinician.

*Optional**

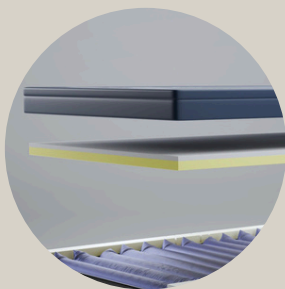
3-In-1 Three In One

- The **AdaptAir™** mattress system offers an optional 3-in-1 alternating cell structure for altered support and comfort.



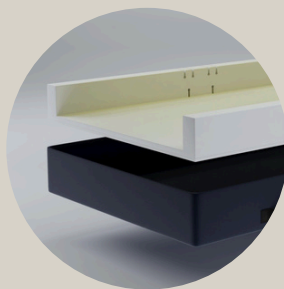
Detachable Cells

- Effective heel offloading.
- Enable targeted offloading across specific regions
- Quick and easy maintenance, and adaptations to the mattress system.



Variable Comfort Levels

- Hygroflex and support layers customised for comfort, pressure care and manoeuvrability.
- Hygroflex envelopes up to 67% more, 50% easier to roll, disperses heat up to 27% faster than other foams.
- Select either a PU stretch or bamboo cover



Transfer Safe Surround

- Firm side wall for safe entry/exit.
- Foam base layer for 'bottoming out' protection.



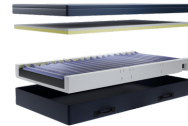
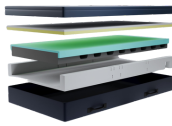
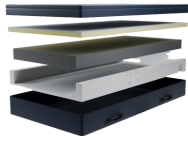
CPR (easy access)

- Quick deflation rate.
- Quick access external placement
- Access not impeded by bed linen or bed rails.



Power Cord Safety System

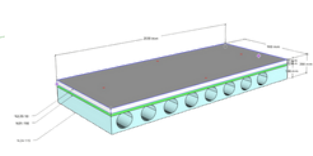
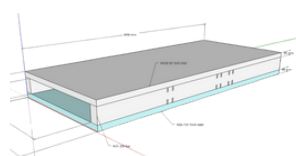
- Integrated and fastened while hidden inside the system.
- Prevents trip hazards.
- Allows for pump placement on either side of the mattress.



	Full Foam	Hybrid-Air	Full-Air Comfort	Full-Air
Bluetooth Monitoring	✗	✓	✓	✓
WiFi Remote Monitoring	✗	✓	✓	✓
Transfer-Safe Sidewall	✓	✓	✓	✓
Alternation style	✗	2-In-1	2-In-1 Or 3-In-1	2-In-1 Or 3-In-1
Detachable Cells	✗	✓	✓	✓
Air-Cell Quantity	✗	8-Cells	18-Cells	18-Cells
Air-Cell Diameter	✗	5-Inch	5-Inch	5-Inch
Zoned	✗	✗	✗	✗
Direct Sacral Injection	✗	✓	✓	✓
Cell Replacement	✗	✗	✓	✓
NE7 Control Unit	✗	✓	✓	✓
TheraCloud Control Unit	✗	✓	✓	✓
Battery Backup	✗	✓	✓	✓
Tilt Sensor	✗	✓	✓	✓
CPR	✗	✓	✓	✓
4-Way Stretch PU Cover	✓	✓	✓	✓
Bamboo Non-Slip Cover	✓	✗	✗	✗
Interchangeable Comfort Layers	✓	✓	✓	✓
Weight Capacity	20 - 200kg	20 - 200kg	20 - 200kg	20 - 200kg
Available Sizes	✓	✓	✓	✓



Studio Essentials



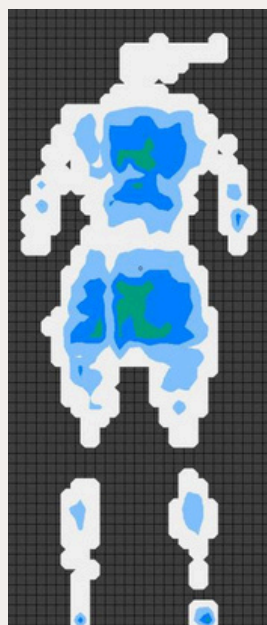
Studio Acute	Studio Bariatric	Airlo-8	AdaptAir Lite	Hybrid
✓	✓	✓	✗	✗
✓	✓	✓	✗	✗
✓	✓	✗	✓	✗
3-In-1	2-In-1	2-In-1	2-In-1	2-In-1
6-Cells (At The Foot)	✓	6-Cells (At The Foot)	✓	✓
20-Cells (3 Static Head Cells)	18-Cells (3 Static Head Cells)	20-Cells (3 Static Head Cells)	18-Cells	8-Cells
8-Inch (Safety Cell-In-Cell)	8-Inch (Safety Cell-In-Cell)	8-Inch (Safety Cell-In-Cell)	5-Inch	5-Inch
✓	✓	Additional Option	✗	✗
✓	✓	✓	✓	✓
✗	✓	✗	Additional Option	✗
✓	✗	✓	✗	✗
✓	✓	✓	✗	✗
✓	✓	✓	✓	✓
✓	✓	✓	✓	✓
✓	✓	✓	✓	✓
✗	✗	✗	✗	✗
✗	✓	✗	✓	✓
			20 - 200kg	20 - 200kg
Long Single King Single	Queen King	Long Single King Single	Long Single King Single	Long Single King Single



Options:



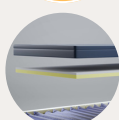
3-In-1
Three In One



Options:



3-In-1
Three In One

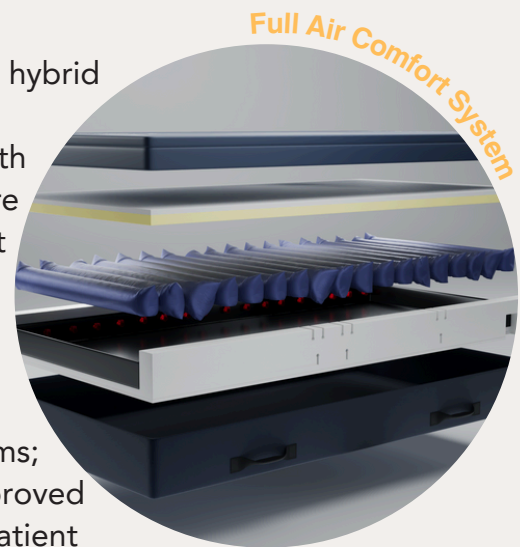


The 'Full Air' Alternating Overlay Mattress System features eighteen 5-inch air cells running the full length of the surface, operating in a gold-standard 2-in-1 cycle to promote consistent on-loading and tissue reperfusion. A quiet yet powerful pump delivers reliable, uninterrupted therapy, with calibration settings tailored to the user's weight and anthropometric profile. Adjustable immersion and envelopment settings further optimise pressure redistribution and overall comfort. A digital interface—accessible via smartphone or tablet—supports real-time monitoring to help prevent under-pressurisation and reduce the risk of bottoming out. In the event of power loss, an integrated support layer maintains protection. Firm sidewalls enhance edge stability to support safer transfers for both users and caregivers.

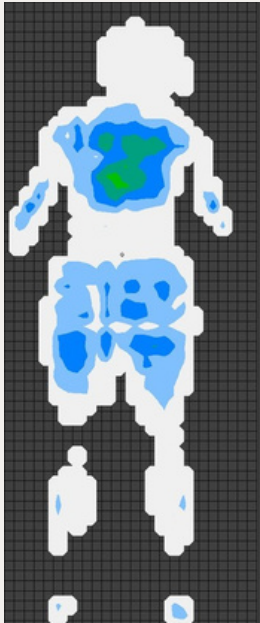


Typical use: The 'Full Air' system is typically prescribed for clients at higher risk of developing pressure ulcers, and is often used in the management of existing pressure injuries.

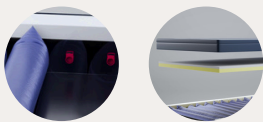
The 'Full Air Comfort' mattress system is a hybrid design that integrates alternating air cells beneath a foam comfort layer, offering both envelopment and moderate active pressure redistribution. Like other hybrid systems, it relies on the combined effect of foam stability and air cell inflation to meet a range of pressure care needs while maintaining comfort. Compared to more clinically intensive full alternating air systems; hybrid systems like 'Comfort Air' offer improved in-bed maneuverability and support safer patient transfers. Beneath the upper layer, the system features eighteen 5-inch air cells running the full length of the surface, delivering a consistent 2-in-1 therapy cycle. For targeted offloading, the Comfort Air includes independently detachable cells—particularly beneficial in high-risk areas such as the heels. While powered hybrid systems provide active pressure relief, their therapeutic intensity is generally lower than that of full alternating air mattress systems.



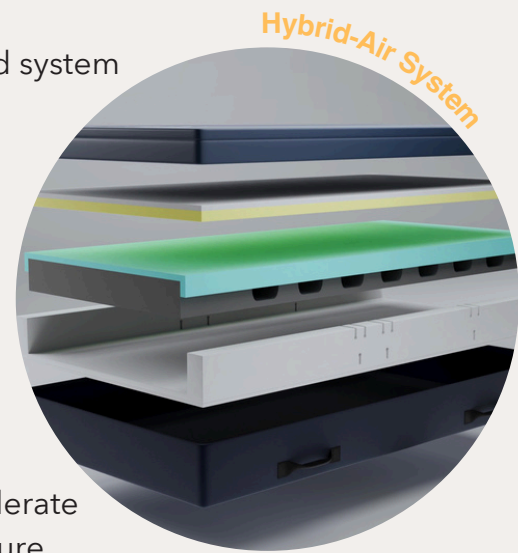
Typical use: Hybrid mattresses such as the 'Comfort Air' are suitable for clients with varying levels of pressure ulcer risk, including those with existing pressure injuries.



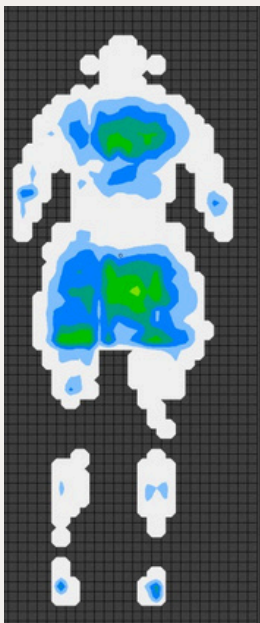
Options:



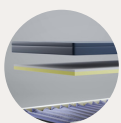
The 'Hybrid Air' Mattress is a typical hybrid system that combines air cells with foam comfort layers, using both envelopment and air cell pressure to support comfort and pressure care. Like most hybrid designs, it enhances ease of transfer and manoeuvrability—offering key advantages over more clinically intensive full alternating air systems. This mattress incorporates eight alternating air cells beneath the foam layers, providing a moderate level of active therapy. For targeted pressure offloading, it includes detachable cells, particularly in high-risk areas such as the heel section. While powered hybrid systems provide a degree of active pressure relief, their therapeutic performance is generally lower than that of full alternating air mattress systems.



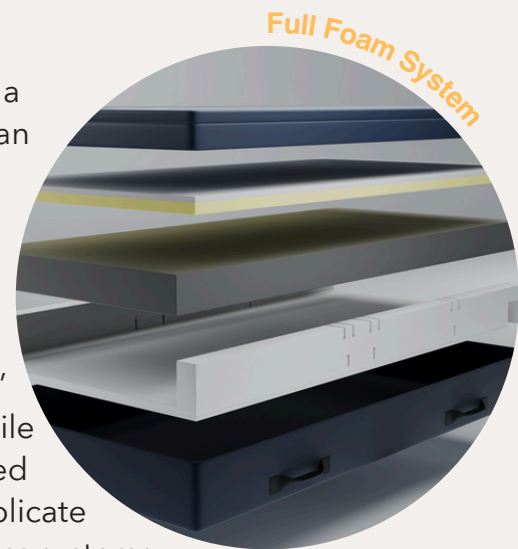
Typical use: *Hybrid mattresses, such as the “Hybrid-Air” Mattress, are suitable for clients with varying levels of pressure ulcer risk, including those with existing pressure injuries.*



Options:



The transition from a standard mattress to a pressure-relieving alternating air system can be significant and challenging. The Studio Advance 'Full Foam' System provides an ideal intermediate solution, combining pressure-relieving Hygroflex with supportive foam comfort layers and a soft, breathable bamboo cover. The 'Full Foam' Mattress offers effective pressure relief while ensuring easy maneuverability and safe bed entry and exit. Its design is intended to replicate the comfort and feel of hybrid-style mattress systems, facilitating a smoother transition for users moving from standard to more specialised mattresses.



Typical use: *The “Full Foam” Mattress is ideal for clients at low risk of pressure ulcers, offering comfortable support for those who do not require more advanced pressure relieving systems.*

TheraCloud™

Australia's most
advanced therapy
solution.

2-in-1 OR 3-in-1

Manage Any Time Anywhere

CPR Compatible



**Automated Compliance
and Reporting**



**24/7 Remote Patient
Monitoring**



**Clinician Designed
Safety Features**



**Real Time Evidence
Based Decision
Making**



**18 Litre Per Minute
- Supporting up to
350kg**



**Programmable
Sleep Cycle's -
Automatically
Rotate between
Immersion and
Alternation
Therapy
throughout the
night**



**Static &
Alternating Modes**



**Instant Email Error
Alerts incl. Cell
Leaks, Pressure
Changes, & Power
Loss**



**Access Patient
History Logs to
Ensure
Appropriate
Therapy**

NE7 Bluetooth

2-in-1 OR 3-in-1

Onsite Management

CPR Compatible



**Automatic Weight
Calibration**



**Onsite Data Driven
Patient Monitoring**



**Clinician Designed
Safety Features**



**Real Time Evidence
Based Decision
Making**



**10 Litre Per Minute
- Supporting up to
200kg**



**Static &
Alternating Modes**



**Instant Error Alerts
incl. Cell Leaks,
Pressure Changes,
& Power Loss**



**Access Patient
History Logs to
Ensure
Appropriate
Therapy**

Evidence Based - Data Driven Therapy Plans

Real-time remote and on-site surface pressure monitoring promotes current, individualised, and data-driven decisions around pressure redistribution, comfort and overall patient outcome.

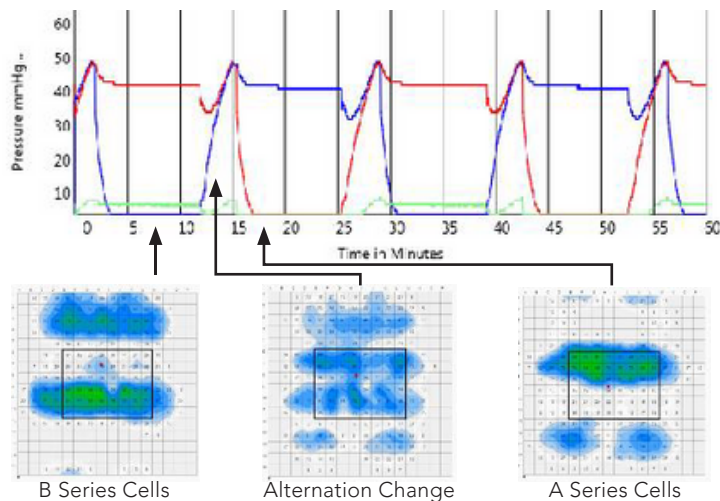
The AdaptAir™ encourages individualised care regimes, allowing care teams and clinicians to manipulate specific system components based upon developing condition requirements.

No Matter the Stage.

The system supports safe, scalable monitoring for multiple patients in line with best practice pressure care protocols.

With Wi-Fi connectivity, therapy performance summaries can be instantly exported to your existing reporting systems.

Care teams can remotely monitor and adjust all connected systems in real time, with automated alerts sent to nominated email addresses for timely intervention.



Remote Monitoring



Unmatched resilience and pressure distribution

The AdaptAir™ air mattress system utilises Hygroflex® – a hybrid comfort foam – merging the luxurious adaptability of memory foam with the support of high-resilience foam. By redistributing pressure and maintaining the ideal balance of moisture and temperature; it enhances the sleep climate for healthier, more restful sleep.



Pressure Redistribution

Hygroflex provides luxury envelopment with the optimal sinking experience. In mattress comfort layers, Hygroflex excels at embracing unique body contours, alleviating discomfort from pressure points and promoting a well rested sleep.



Heat Dissipation

Heat retention during sleep leads to disruptions and low sleep quality. Hygroflex is designed to significantly reduce these issues with its highly porous composition. Being up to 72% more porous than latex, Hygroflex promotes optimal airflow and sustains a refreshing, cool sleep throughout the night.



Low Hysteresis

Hysteresis loss refers to the difference in energy between the loading and unloading phase. Hygroflex features a low hysteresis, which is linked to higher comfort levels and improved sleep efficiency.



Low Friction

Foam with reduced friction offers a luxurious, comfortable sleep experience by promoting effortless movement, allowing sleepers to enjoy a deeper rest. Completing a full rotation on Hygroflex requires less than half of the force that is required on conventional memory foams.

Specifications

Code	Size	Dimension	Bariatric Use
SALS	Long Single	2030 x 920 x 205	✗
SAKS	King Single	2030 x 1070 x 205	✗
SA PK S	King Single PLUS	2030 x 1070 x 291	✓
SALD	Long Double	2030 x 1370 x 205	✗
SAPLD	Long Double PLUS	2030 x 1370 x 291	✓
SAQ	Queen	2030 x 1520 x 205	✗
SAPQ	Queen PLUS	2030 x 1520 x 291	✓
SAK	King	2030 x 1850 x 205	✗
SAPK	King PLUS	2030 x 1850 x 291	✓

Therapeutic Weight Range

Studio Advance = 30 to 200kg Studio Advance Plus =

70 to 235kg

(Custom made to suit specific weight and therapy needs.
Semi-zoned cell structure with upgraded pump.)

Applicable Cover Options

Standard Wipe-down Anti-microbial 4-way Stretch

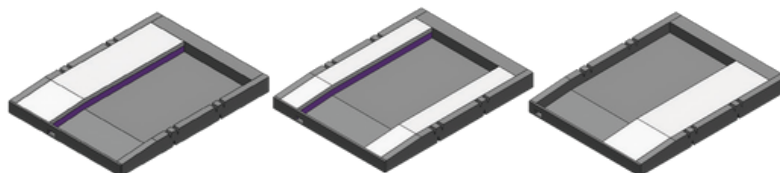
180 GSM PU - Waterproof Zip, 4-way Stretch

240 GSM PU - Waterproof Zip, 4-way Stretch

Bamboo Comfort Cover

Upgrade: Custom Sizing Base Options

When upgrading to a custom sized system, client preference is not compromised. Choose between either 1 or 2 internal bolsters, placed wherever required to ensure the therapy surface is located in the optimal location



Warranty and Standards



AdaptAir™

THE ORIGINAL ADAPTIVE
THERAPY SYSTEM

2 YEARS WARRANTY

Pump, mattress, cells

*A 2 year blanket warranty is provided over all foam components, NE-7 control unit (Pump), mattress cover and cells.

Warranty Studio Care does not warrant against excessive or

incorrect

use, modification or any situation that could be deemed as fair wear and tear. This a return to base (RTB) warranty and does not cover freight and transport costs pertaining to the return of any items under warranty. For more information please contact Studio Care. Studio Care will not warrant the safety and or correct functioning of products where any original component have been changed or modified by non-Studio Care approved and trained service & maintenance staff or external providers. Safety is not guaranteed where components have been replaced with non-original Studio Care parts. All mattress customisation, modifications, and or alterations made to this product are considered as "Custom" changes. These may cause the product to no longer meet safety standards and should be considered prior to commencement.

Any customisation or modification of the air mattress is not warranted by Studio Care and will void warranty. If any faults are detected upon receipt of this product please phone Studio

Care. Any faults that are detected during normal use should be reported to Studio Care immediately to determine if warranty conditions apply and if so, the necessary repair or replacement work to be completed. Spare parts lists are available upon request. For servicing, preventative maintenance and any other questions regarding this or any Studio Care product, please contact Studio Care.

Standards

9001 The air mattress systems components are manufactured in ISO compliant production facilities in Australia to strict quality control standards.

Compliance:		Symbol	Definition of Symbol
210681	175810		Attention: See instructions for use
			CE Marking indicating conformance to EC Directive No. 2007/47/EC concerning medical devices
			Type BF Applied Part (patient isolation from electrical shock)
			Class II Product
ISO-13485	ISO -9001		Operation Instructions
			Indicates separate collection for electrical and electronic equipment (waste)
			Protection against finger and dripping water

STUDIO CARE

36 Smallwood St,
Underwood QLD 4119

Studio-Care.com.au
(07) 3390 6832