



STUDIO CARE

Comfort Range

Designed for simplicity. Built for care.



- **3x comfortable yet supportive feels & Bariatric option (Comfort Plus)**
- **Transfer safe sidewall & bed ends supporting 200kg & 300kg safe working loads**
- **High resilience foam core with supportive immersion**
- **HygroFlex Layer for enhanced in bed manoeuvrability**





The Studio Comfort Range features a lower-height design with firm edges for safer transfers, smooth in-bed movement, and pressure-conscious comfort—all in a familiar, home-like style.

The Studio Comfort range was developed in collaboration with allied health professionals to meet the day-to-day needs of clients requiring practical pressure care. We recognise that prescribing a support surface involves balancing comfort, clinical risk, and mobility—often within space or height constraints. Studio Comfort delivers stable, reliable support through thoughtful materials and design features that promote safer transfers, in-bed movement, and long-term comfort.

Any size, any bed

Half Queen | Long Single | King Single | Long Double | Queen | King | Custom

Therapeutic Weight Range of 30kg - 200kg

Studio Comfort Plus: 80kg - 300kg

5 Year Warranty

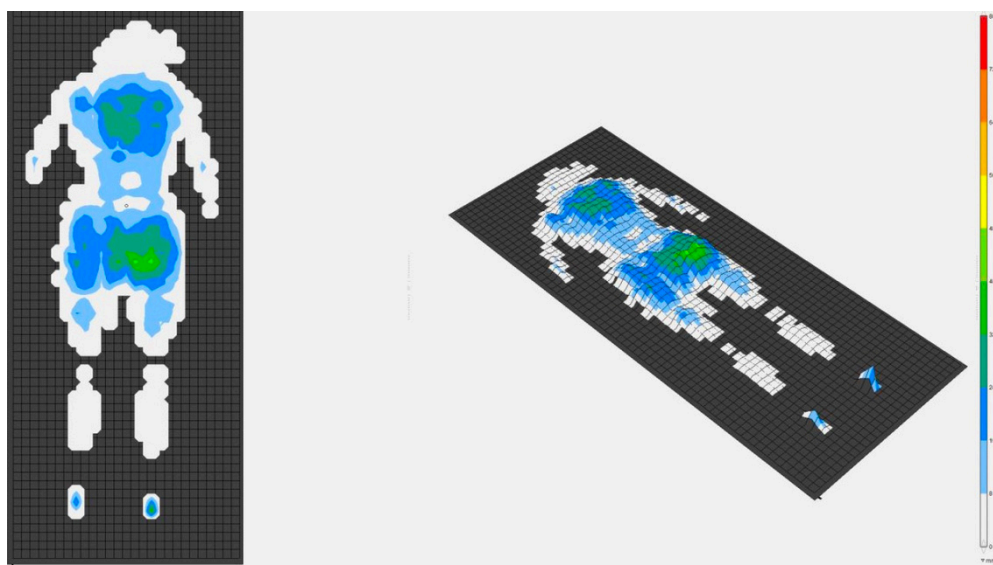
Features

- Supportive, safe transfer side wall for clients with mobility restraints
- Multi layered, high-resilience foam core for responsive immersion and support
- 5 year warranty for added piece of mind
- Compatible with mobility aids and hoist transfers
- Optional welded outer polyurethane 4-way stretch cover
- Australian Made - Family owned design
- Widths: Half Queen (76cm), Long Single, (90cm), King Single (106cm), Long Double (138cm), Queen (153cm), and custom sizing.

Pressure Mapping Data

Pressure mapping was conducted using a calibrated, medical-grade smart bed sensor. All testing was performed with a live test subject positioned in a supine reclined posture to reflect realistic pressure redistribution scenarios.

Unlike mannequin-based methods that may omit contact at key anatomical points (such as heels), this testing approach ensures accurate representation of true interface pressure across all load-bearing areas.



| | Maximum Pressure (mmHg) | Average Pressure (mmHg) | Sensing area (cm ²) |
|---------|-------------------------|-------------------------|---------------------------------|
| Overall | 42.03 | 12.14 | 4069.33 |



Unmatched resilience and pressure distribution

The *Studio Comfort & Plus Range* utilises Hygroflex® – a hybrid comfort foam – merging the luxurious adaptability of memory foam with the support of high-resilience foam. By redistributing pressure and maintaining the ideal balance of moisture and temperature; it enhances the sleep climate for healthier, more restful sleep.



Pressure Redistribution

Hygroflex provides luxury envelopment with the optimal sinking experience. In mattress comfort layers, Hygroflex excels at embracing unique body contours, alleviating discomfort from pressure points and promoting a well rested sleep.



Heat Dissipation

Heat retention during sleep leads to disruptions and low sleep quality. Hygroflex is designed to significantly reduce these issues with its highly porous composition. Being up to 72% more porous than latex, Hygroflex promotes optimal airflow and sustains a refreshing, cool sleep throughout the night.



Low Hysteresis

Hysteresis loss refers to the difference in energy between the loading and unloading phase. Hygroflex features a low hysteresis, which is linked to higher comfort levels and improved sleep efficiency.



Low Friction

Foam with reduced friction offers a luxurious, comfortable sleep experience by promoting effortless movement, allowing sleepers to enjoy a deeper rest. Completing a full rotation on Hygroflex requires less than half of the force that is required on conventional memory foams.



Warranty and Standards

Comfort Range

Warranty

Studio Care does not warrant against excessive or incorrect use, modification or any situation that could be deemed as fair wear and tear. This is a return to base (RTB) warranty and does not cover freight and transport costs pertaining to the return of any items under warranty. For more information please contact Studio Care. Studio Care will not warrant the safety and or correct functioning of products where any original component have been changed or modified by non-Studio Care approved and trained service & maintenance staff or external providers. Safety is not guaranteed where components have been replaced with non-original Studio Care parts. All mattress customisation, modifications, and or alterations made to this product are considered as "Custom" changes. These may cause the product to no longer meet safety standards and should be considered prior to commencement.

Any customisation or modification of the air mattress is not warranted by Studio Care and will void warranty. If any faults are detected upon receipt of this product please phone Studio

Care. Any faults that are detected during normal use should be reported to Studio Care immediately to determine if warranty conditions apply and if so, the necessary repair or replacement work to be completed. Spare parts lists are available upon request. For servicing, preventative maintenance and any other questions regarding this or any Studio Care product, please contact Studio Care.

Standards

GECA Standards | ISO-14024

10 YEAR WARRANTY

*A 10 year blanket warranty is provided over all foam components.

STUDIO CARE

**36 Smallwood St,
Underwood QLD 4119**

**Studio-Care.com.au
(07) 3390 6832**