

# Controlling FMD: A Journey of Strategy, Consistency, and Collaboration

---

Webinar, 12 August

Ulrich Kihm, President TAFS Forum

Patrik Buholzer, Executive Director TAFS forum

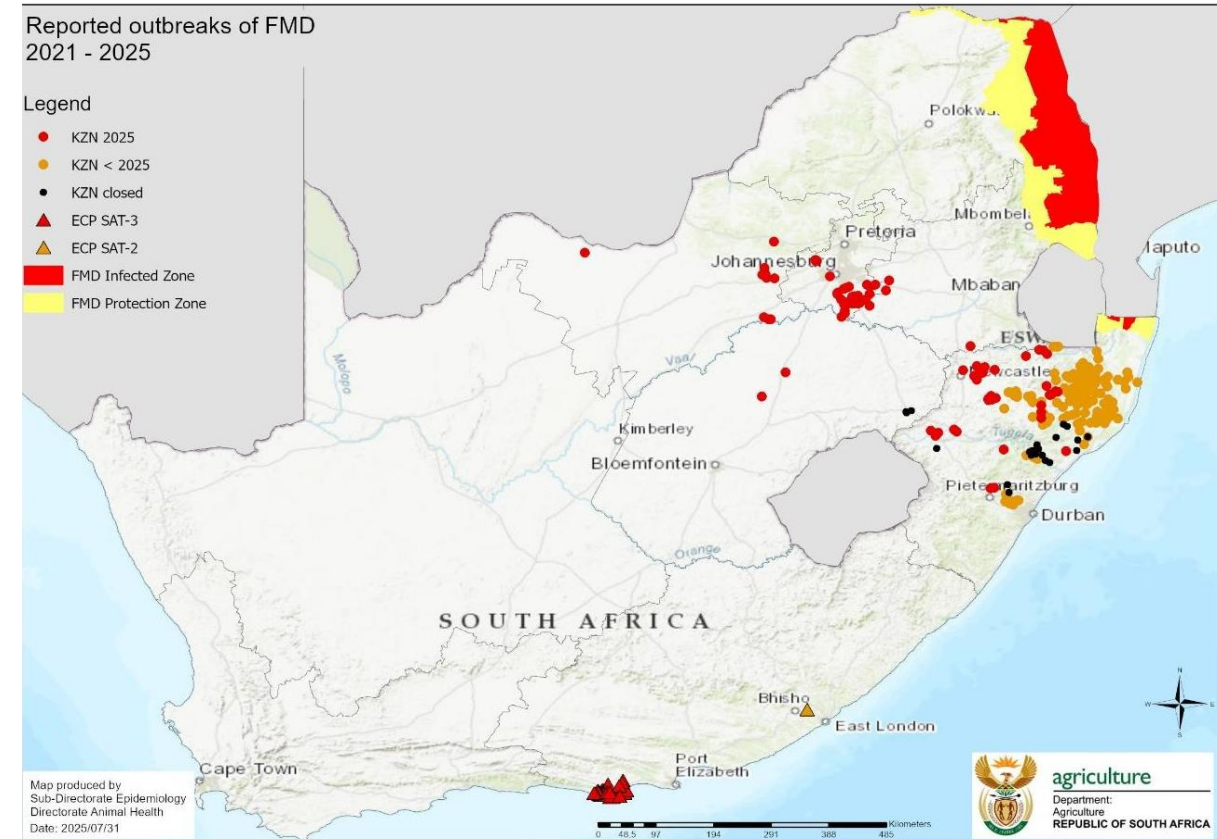


# Why FMD control is important?

Foot-and-mouth disease has a significant economic impact and disrupts international trade

- I
- Substantial production losses
  - Affecting food security and livelihoods

- II
- Trade restrictions and economic hardship



# The Key Elements of Effective FMD Control

## Strategic & Structural Foundations

- Strategic Planning
- Consistent Implementation
- Sustained Political & Financial Commitment

## Operational Foundations

- Biosecurity
- Containment & Eradication
- Public Awareness & Engagement

## Core Systems & Tools

- Robust Veterinary Services
- Quality Tools
- Effective Surveillance & Early Detection

## Collaborative Enablers

- Public-Private Partnerships
- Regional and Cross-Border Cooperation

# The Key Elements of Effective FMD Control

## Strategic Foundations

- Strategic
- Consistent
- Sustained  
Commitment

## Operational

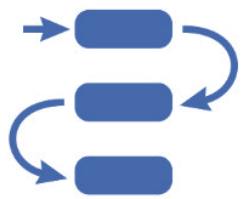
- Biosecurity
- Containment
- Public Awareness & Engagement



# Communicate!

y Detection

# Strategic Planning



Importance of **national vision** and **phased approach**: from control to eradication



Understanding the risk – risk assessments & gap analysis



Use of **risk-based strategies**  
e.g. zoning, PCP-FMD, vaccination

**FLEXIBILITY  
&  
ADAPTABILITY**

# Consistent Implementation

- **Keeping momentum over years**
  - Turning strategies and plans into sustained, reliable action over time
- **Institutional stability**
  - Stable leadership and clear responsibilities within veterinary services
  - Embedding FMD control in national programs and budgets
- **Operational continuity**
  - Regular and timely vaccination campaigns
  - Consistent enforcement of movement restrictions and biosecurity rules
  - Routine surveillance activities maintained even in quiet periods



# Effective Surveillance and Early Detection

- **Risk-based surveillance**
  - Targeted and focused
  - Active and passive
- **Diagnostics and field-lab linkages**
  - Use the right tools for purpose
  - Sampling and sample logistics
- **Community involvement and rapid reporting**
  - Farmers and field vets are at the forefront
  - Effective engagement helps to control spread



# Robust Veterinary Services

- **Skilled workforce**
  - Sufficient number of trained field and laboratory staff
  - Continuous education and technical training
  - Clear chain of command and decision-making authority
- **Field and laboratory capacity**
  - Rapid deployment capacity for outbreak investigation and response
  - Reliable diagnostics
  - Functional logistics
- **Coordination and Communication**
  - Strong national-level coordination
  - Animal identification and traceability systems
  - Efficient data collection, analysis, and feedback mechanisms

**“A strong veterinary infrastructure is the backbone of effective FMD control”**



# The Importance of Quality Tools: Vaccines and Diagnostics



# Why quality matters:

## Poor tools can undermine even the best strategies!

### Access to quality tools is critical

- Diagnostics: validated, rapid, affordable
- Vaccines: appropriate strains, reliable supply, proven efficacy
- Capacity to procure, test, and monitor product quality

# Why quality is so critical?

- Effective FMD control relies on **more than availability**
  - The quality of vaccines and diagnostics directly affects outcomes
- Poor-quality tools lead to
  - Ineffective immunity
  - Misdiagnosis or missed detection
- **Loss of stakeholder trust**
  - Loss of commitment
  - Ineffective vaccination program

# So, what needs to be assured?



## Vaccines

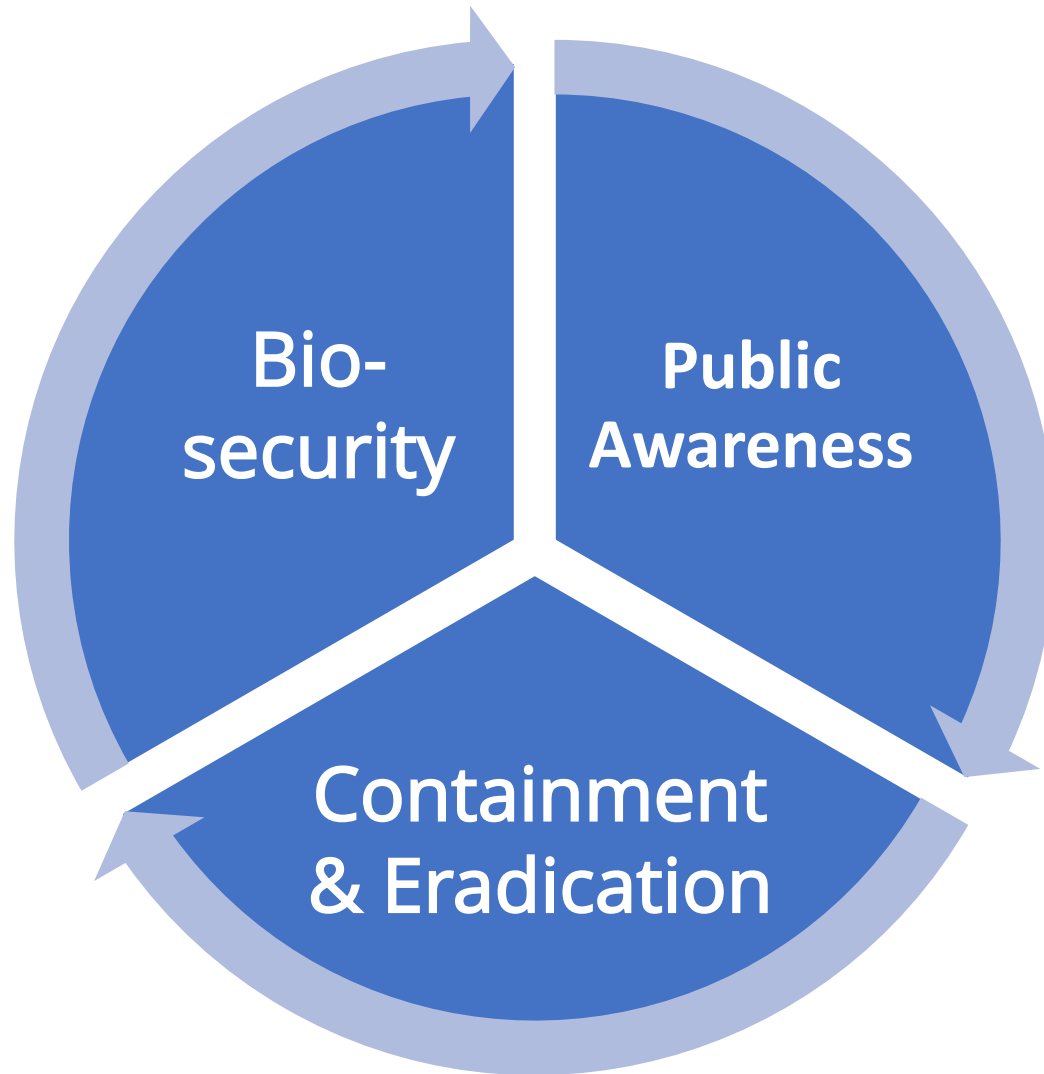
- Potent, purified, and strain-matched → DIVA vaccine
- Require a reliable supply and proper administration
- Quality assurance: national or regional vaccine evaluation and approval systems



## Diagnostic

- Fast, accurate, and validated for field and lab use
- Early detection
- Surveillance and outbreak tracing
- Proof of freedom and international certification

# Operational Foundations of FMD Control





# Biosecurity

- **Farm-level hygiene**
  - cleaning, disinfection, access control
- **Movement restrictions**
  - animals, vehicles, feed, visitors
- **Infrastructure**
  - fencing, quarantine pens, PPE

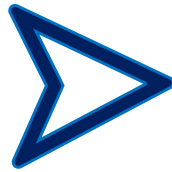
Prevention is cost-effective!



# Containment & Eradication

## Early detection – immediate action

- Quarantine: zoning, movement standstills
- Emergency vaccination strategies
- Culling and disposal



## Prerequisite

- Contingency planning
  - SOPs
  - Trained teams
- Traceability
- Response coordination

# Public Awareness & Engagement

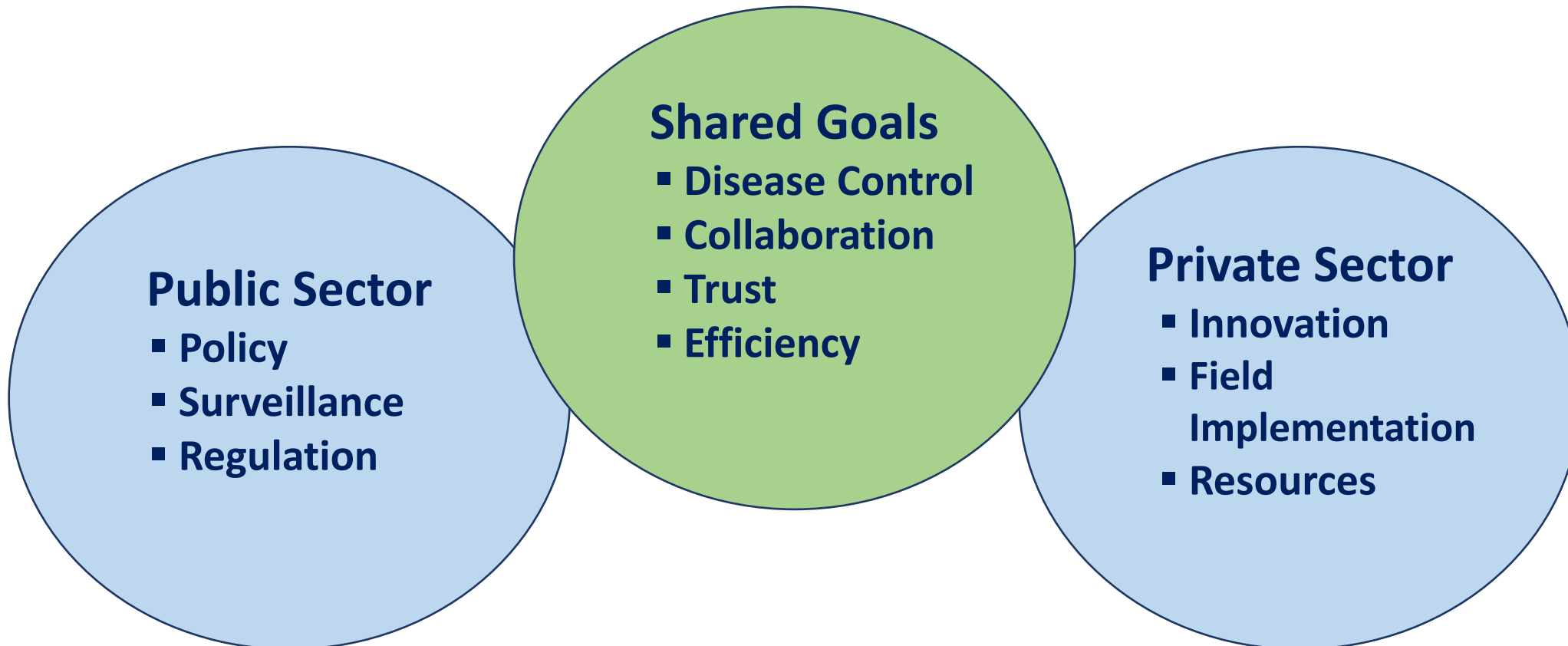
“When it comes to disease control: talking is gold”

- **Information campaigns**
  - radio, posters, social media
  - communication of control efforts
- **Target groups**
  - farmers, traders, transporters, public
- **Promoting reporting, compliance, and behavior change**
- **Importance building trust**



# Public-Private Partnerships

Public-Private Partnership (PPP) is a joint effort where the public and private sectors work together to achieve shared goals



# Regional and Cross-Border Coordination

FMD control requires collaboration beyond national borders

## Why It Matters

- FMD is a **transboundary disease**
  - no country is safe unless the region is
- Uncoordinated efforts lead to **reinfection** and **wasted resources**
- Success in one country **depends** on progress in neighboring areas

## Key Components

- **Harmonized control strategies**
  - vaccination timing, surveillance, and response
- **Cross-border coordination**
  - joint campaigns, outbreak reporting, movement control
- **Data and information sharing**
  - outbreaks, risks, lab results, animal movement



# Sustained Political and Financial Commitment

- Long-term progress in FMD control requires stable leadership and secure funding

## Political Commitment

- FMD control must be a national **priority**, not just a veterinary issue
- **Support** from top-level decision-makers enables policy enforcement and cross-sector coordination
- **Integration** into **broader strategies**: livestock development, food security, public health, and trade

## Financial Sustainability

- **Stable, predictable funding**
  - Vaccines and diagnostics availability
  - Surveillance, field operations, emergency response
  - Training, awareness campaigns, and infrastructure
- Short-term projects jeopardizes sustainability and continuity

# Key Takeaways

- Controlling FMD is possible
- It requires **strategy, persistence, and collaboration**
- Public-private **cooperation** and **regional efforts** are essential
- Plenty of success stories: e.g. Mercosur



# Call to Action

How others can follow

- Start with **strategy**
- Build coalitions **across sectors**
- **Learn** from success - adapt to local context

**“The roadmap is clear –  
it’s time to walk it together”**



# Thank you for your attention!

