

FORMPARK

BAUWERK
Parkett

PARQUET REVISITED

The genius behind Formpark lies in its simplicity.
Two formats, countless possibilities.

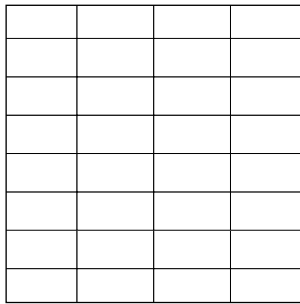


More inspiration on
our website.

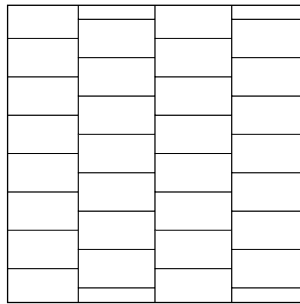
Laying patterns

Being unique and simple the 3:1 and 2:1 proportions of its planks, Formpark can be laid in both a parallel and an orthogonal pattern, creating architecturally inspired patterns and maximum design freedom. Smooth transitions from one pattern to another are also possible.

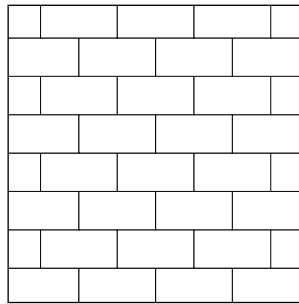
We have compiled a selection of some favourite laying patterns for you. The experts at our Worlds of Parquet and our installation partners will support you in your planning. Which Formpark laying pattern is your favourite?



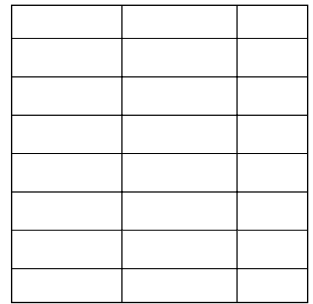
1



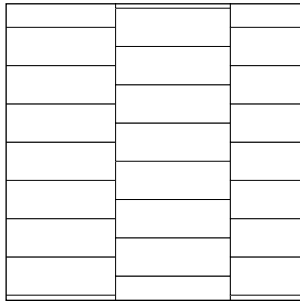
2



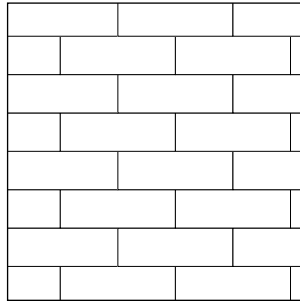
3



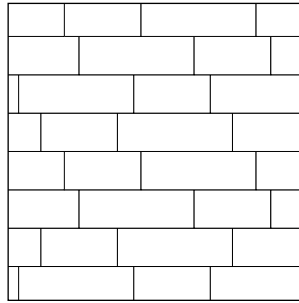
4



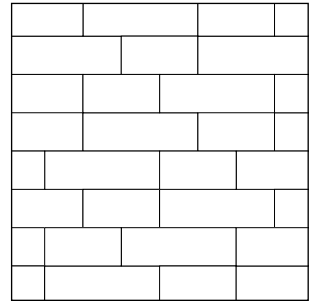
5



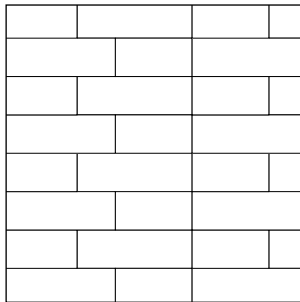
6



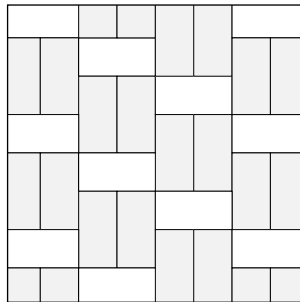
7



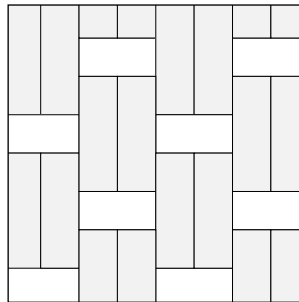
8



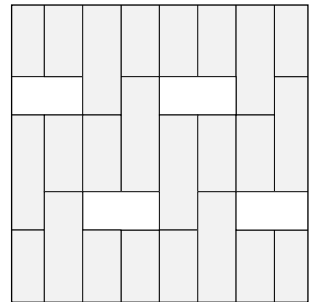
9



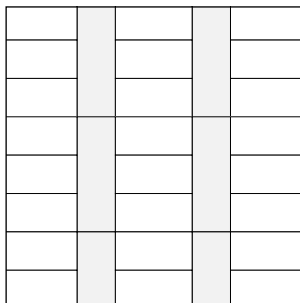
10



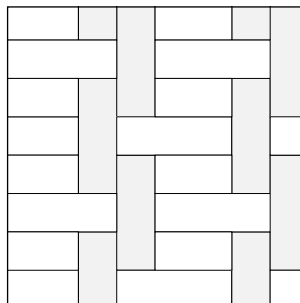
11



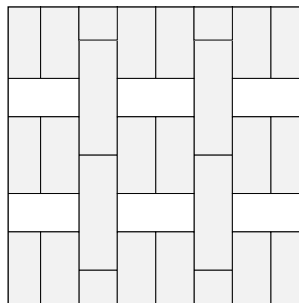
12



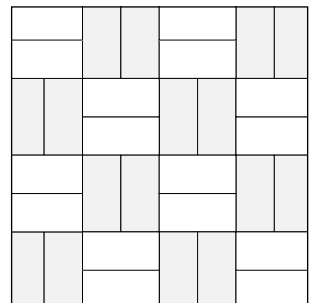
13



14

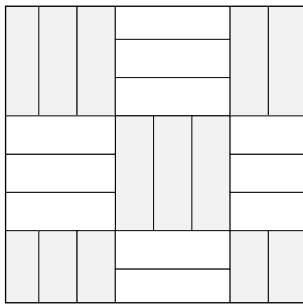


15

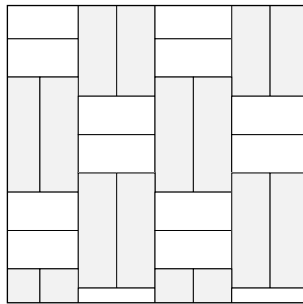


16

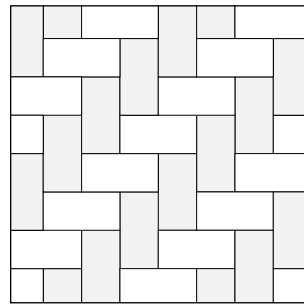
- Formpark and Formpark Mini cannot be combined with each other.
- Due to the incidence of light, vertically installed planks appear brighter than horizontal ones. This effect can be used specifically as a design element.



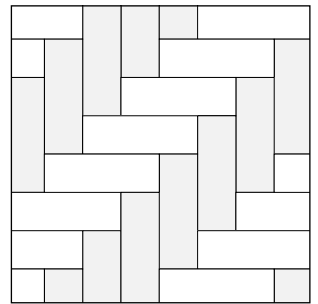
17



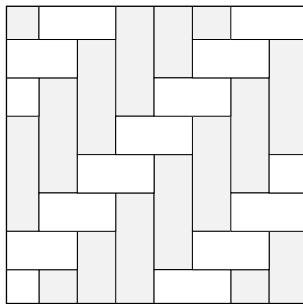
18



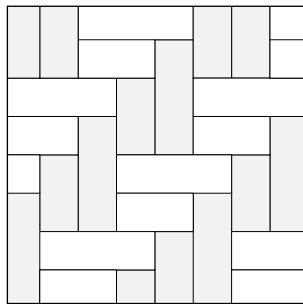
19



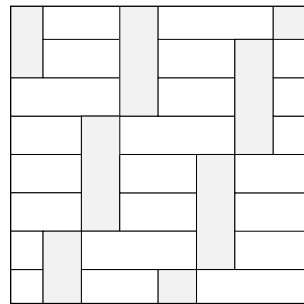
20



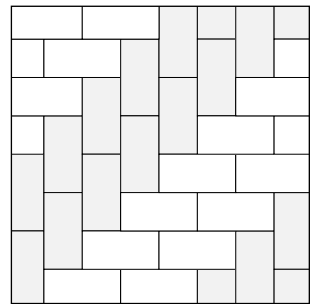
21



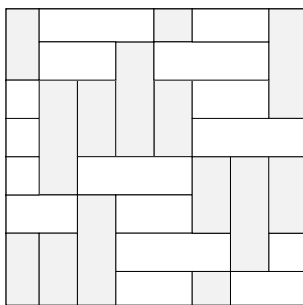
22



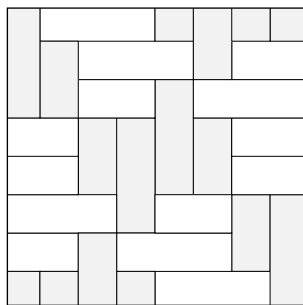
23



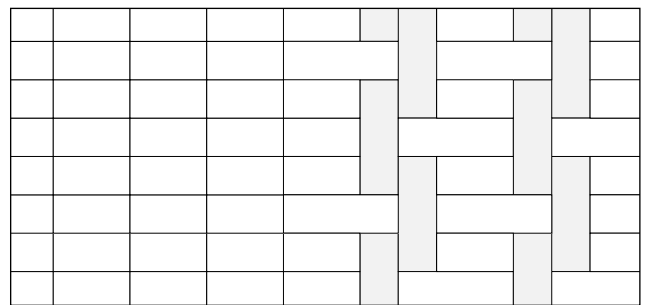
24



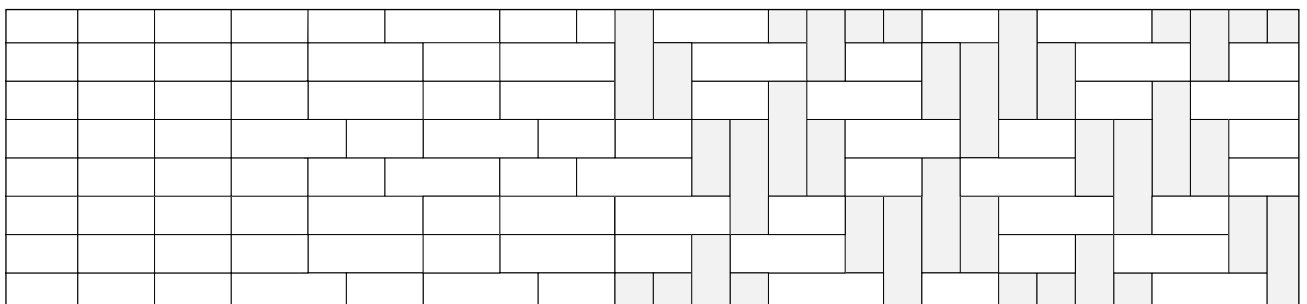
25



26



27



28



Colours, surfaces and dimensions

Formpark and Formpark Mini offer a wide range of creative pattern possibilities. Both formats are available as 2-layer parquet with a natural-oiled, deep-brushed surface that ensures a particularly pleasant tactile experience. While Formpark stands out with its impressive plank dimensions, Formpark Mini is ideal for smaller spaces – without any compromise on design.



Oak Avorio
Surface: natural oiled
Grading: 14*

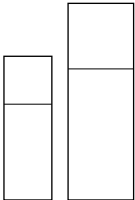


Oak Nature
Surface: natural oiled
Grading: 14*, 35*



Oak smoked
Surface: naturgeölt
Grading: 14*, 24

14: calm grading
24, 35: lively grading
* without sapwood



570/380 × 190 × 9.5 mm
780/520 × 260 × 11 mm

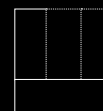
“With Formpark I sought to design a parquet typology based on a geometrical principle that exists independently from trends.”

Stephan Hürlemann, architect and Formpark concept designer from Zurich



The idea is irresistibly simple, and despite that, no one had thought of it before. Being unique and simple the 3:1 and 2:1 proportions of its planks, Formpark can be laid in both a parallel and an orthogonal pattern, creating architecturally inspired patterns and maximum design freedom. With Formpark, diverse patterns emerge, from calm to lively, from classic to avant-garde, based on the way the parquet is installed and how light falls on it.

3:1



2:1



Formpark 520
520 × 260 mm

Formpark 780
780 × 260 mm



Formpark Mini 570 & 380 Oak Nature 35 Laying Pattern 21

Formpark includes two plank formats, which can be put together to match countless different room atmospheres. Formpark Mini also enables numerous variations of patterns and floor typologies, with ample room for design customisation. And thanks to this format's compact dimensions, it creates a powerful look even in smaller rooms.

3:1

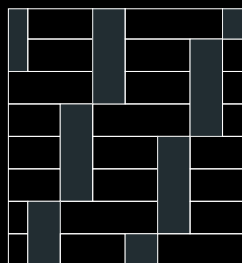


2:1



Formpark Mini 380
380 × 190 mm

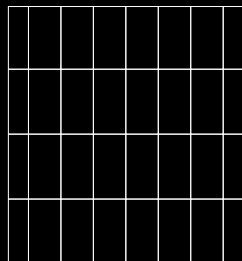
Formpark Mini 570
570 × 190 mm



Product
Formpark Mini 570 & 380
Oak Avorio 14

Laying Pattern 23

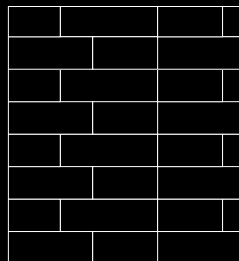




Product
Formpark Mini 380
Oak Nature 14

Laying Pattern 1

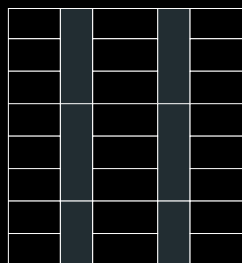




Product
Formpark Mini 570 & 380
Oak Nature 35

Laying Pattern 9

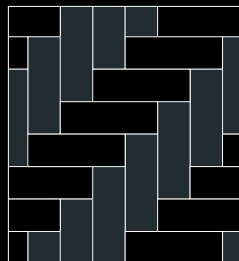




Product
Formpark Mini 570 & 380
Oak smoked 14

Laying Pattern 13





Product
Formpark Mini 570
Oak smoked 24

Laying Pattern 20



In 2011, Zurich-based architect and designer Stephan Hürlemann created the award-winning concept for Bauwerk Parkett's showrooms. At the same time, he came up with the idea for the Formpark collection, which he developed together with designer Simon Husslein.



What does wood as a material mean for you personally? And in your day-to-day work?

For me, wood is one of the best materials out there: it looks and feels great, it's malleable and robust, it ages wonderfully, it stores CO₂, and is obviously renewable. This means that wherever it makes sense, I work with wood.

Creative and novel parquet laying patterns have seen a huge revival recently: do you see a particular trend for this?

Floors are fixed architectural elements, and as such, they need to stick to long-term approaches in their design language. Therefore, I would certainly avoid fads. At the same time, a floor is always a witness of its time. Many people associate certain laying patterns, like herringbone, with eras of the past. With Formpark, one of my goals was to bring these older typologies to the present. And with its broad planks and tightly-fitting 2:1 and 3:1 proportions, Formpark does indeed succeed in doing this. Old, tried-and-tested patterns look so contemporary and fresh.

What does good interior design mean for you?

Good interior architecture doesn't force itself into the foreground, yet never makes itself the centre of attention. Quite the opposite: it offers a stage for the life of those who use the space, helping them satisfy their needs. It is a place for rituals, it sets the mood that people identify with and are inspired by. To achieve this, I look for clever floor layouts, timeless design language and good-quality authentic materials that, whenever possible, can be recycled. I choose furniture and other objects in such a way that they tell people's stories.

Many shy away from combining different wood types and colours. Do you think there is a tendency to apply simpler rules to follow in order to create a balanced aesthetic in the end?

It is indeed a difficult task to combine several wood types into a cohesive overall concept. Every wood has its own character, as well as its own look and structure. So, I'd be somewhat reserved about the idea of combining different wood types. However, as we saw earlier, if this approach is used as an elaborate design element for a parquet floor, you can achieve wonderfully creative results.





Formpark Mini 570 Oak smoked 14 Laying pattern 1 & 2

AWARD-WINNING

Formpark has been a success story for over a decade – and not just on the market. As early as 2014, the German Design Council named Formpark 'Best of Best' in the Product category at the Iconic Awards. At the 2015 German Design Awards, Formpark received a 'Special Mention' in the Building and Energy category, in recognition of its outstanding design quality.



Bauwerk Parkett – Built for a lifetime

What began in 1935 with the invention of solid parquet by Swiss pioneer Ernst Göhner, sets new standards for ambitious design and healthy living today. Just like every tree and every piece of wood, each of our responsibly manufactured planks is sustainable and unique. A fusion of Swiss engineering and authentic nature results in extraordinary living experiences: today, and for future generations. bauwerk-parkett.com