

Using Indigenous power to co-construct better primary care for Māori cancer patients

Presented by Gill Potaka - Osborne & Dr Amohia Boulton
Whakauae Research Services Ltd,
Aotearoa New Zealand.



-
- https://whakauaers.sharepoint.com/sites/docs/_layouts/15/stream.aspx?id=%2Fsites%2Fdocs%2FDesign%20Team%2FHe%20Waka%20Eke%20Noa%2FHe%20waka%20eke%20noa%5Fwith%20grade%20%5Bv%5D%20%281%29%2Emp4&ct=1706484996350&or=Outlook%2DBody&cid=60C6CFCD%2D6726%2D4AA7%2D9483%2DEFEA3A4368D5&fromShare=true&ga=1&referrer=StreamWebApp%2EWeb&referrerScenario=AddressBarCopied%2Eview



Who is Whakauae?

- 👤 Tribally (Ngāti Hauiti) owned Māori health services research organisation (Aotearoa NZ);
- 👤 Māori public health research, evaluation and health services and policy research focus;
- 👤 Goal: to improve Māori health outcomes. We are passionate about transforming research results into change at practice and policy levels;
- 👤 Committed to sustainable, effective partnerships with community, academic institutions and health service providers; and
- 👤 Primarily utilises Kaupapa Māori qualitative research approaches.

Kaupapa Māori & Appreciative Inquiry (KMAI)



- Focused on solutions rather than the problem,



- Strengths-based



- Compatible with Kaupapa Māori Inquiry

Discovery Phase Results

Whānau

- 👤 Whānau care and are there for each other
- 👤 Whānau have their own health champions
- 👤 Gonville Health cares and demonstrates this in a number of ways

Treating me with respect

Treating me as a 'real' person not just someone who is unwell

“they got me to go and have these tests because I looked so sick...well I didn't think so but they did”

Keep whānau up to date with what is going on health wise...Explain to health workers about my needs and about my situation if I'm not up to it


Whānau
Kōrero
He Waka Eke Noa


HE WAKA EKE NOA
Co-creating primary care that works for whānau Māori

Discovery Phase Results

Gonville Health Team

 works well together

 has a workplace culture that nourishes workers supporting them in turn to nourish patients

 demonstrates commitment to patient wellbeing and advocacy



**NG A WORKPLACE
URE THAT
RISHES WORKERS
PORTING THEM TO IN
N NOURISH PATIENTS**

• Listening to patients
• Striving to understand and appreciate everyday realities for patients
• Fostering authentic, long-term relationships with patients
• Being non-judgmental

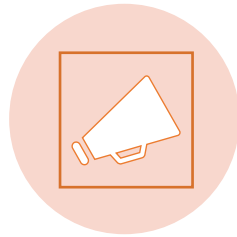
WE ARE COMMITTED TO ADVOCATING FOR PATIENTS BY

- Leaving no-one behind
- Following up on patient care proactively

HE WAKA EKE

Discovery Phase Results

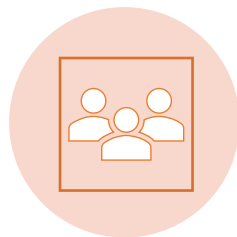
(common themes across whānau and primary healthcare team)



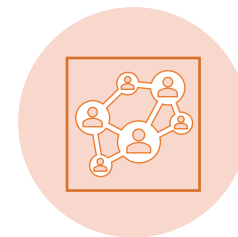
Strong
Advocacy



Being non-
judgemental



Robust
teamwork



Relationships
and Caring



Thank you to everyone that took part in the Discovery Phase of this research.

We would like to acknowledge our participant who passed away during the discovery phase and his whānau who continue to engage with the research

