

Beyond the data: Rangatahi re-storying Māori health research

Tom Johnson & Tomairangi Morgan



kiapuāwai
ake ngā uri whakatupu



"Kia puāwai ake ngā uri whakatupu" comes from a waiata 'Waenga Awaawa' (Richard Steedman, 2003) which speaks to Ngāti Hauiti aspirations for flourishing future generations

mindsets for research impact



TUI: TRANSLATION, UPTAKE & IMPACT

WORKING IN THE GREY

KIA NOHO TAU I TE RANGIRUA

Being comfortable with ambiguity and not knowing the answers



CURIOUS & OPTIMISTIC MINDSET

WHAOWHIA TE KETE MĀTAURANGA

Being radically open and unburdened by expertise. Confident in our world views.

SAFE TO FAIL- ADAPTIVE

AHAKOA NGA HEKE, HE HĀNEANEA TE HAERE

Cherishing the learning opportunities failure brings, constant reflection, learning and adaption to ensure TUI projects are timely, relevant and sustainable



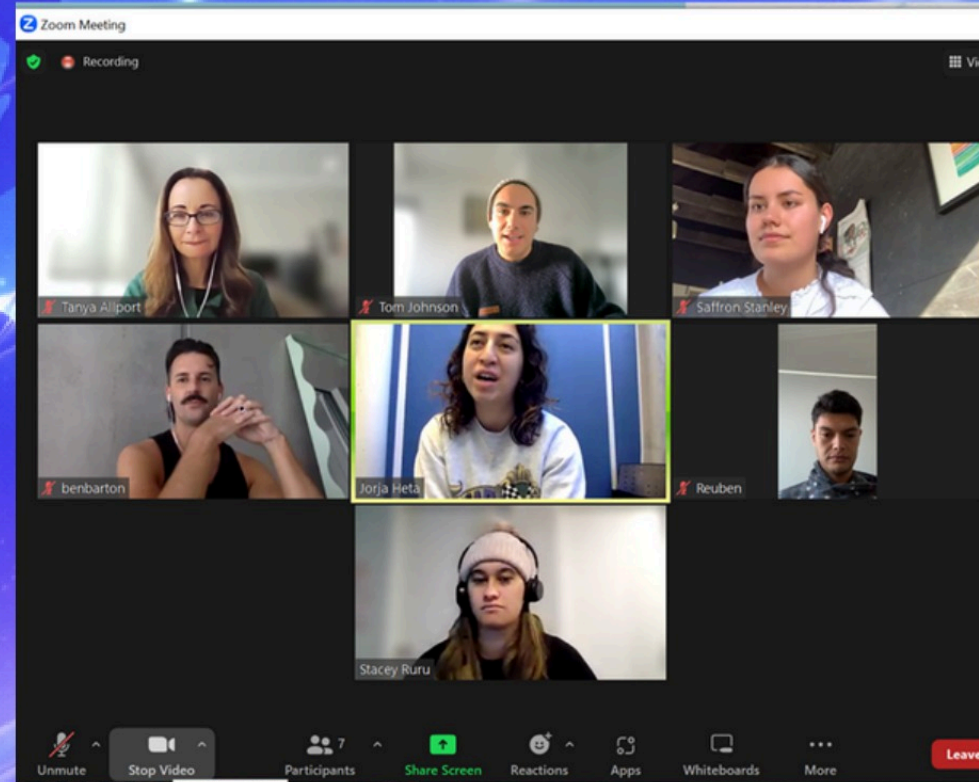
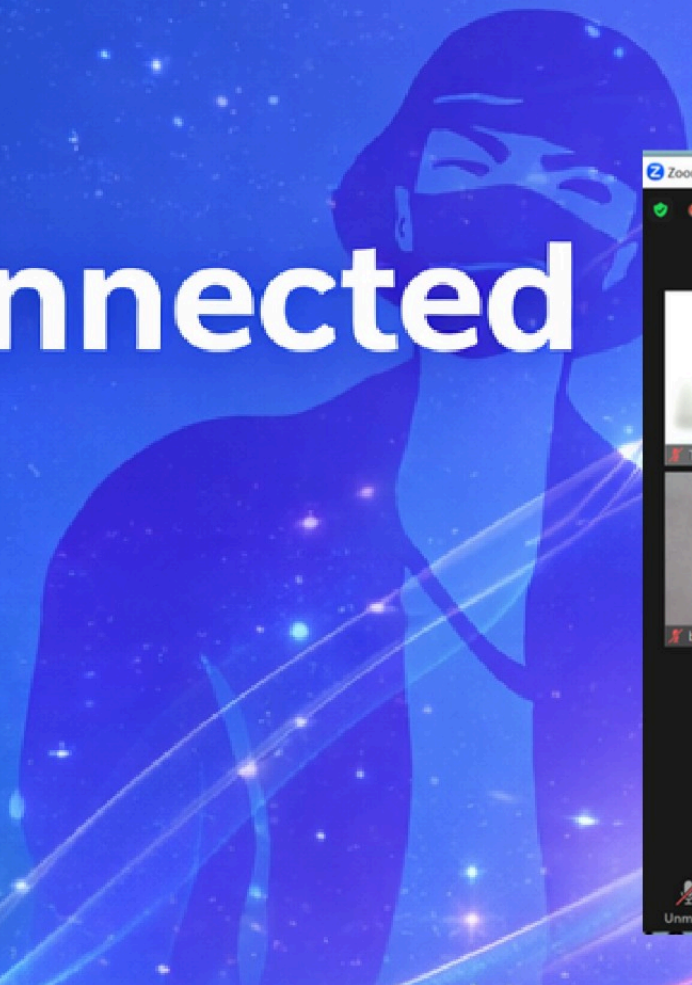
COLLABORATION

NĀKU TE ROUROU NĀU TE ROUROU KA ORA AI TE IWI

Leverage research impact with strategic stakeholders at multiple levels where mahi is co-created



How we connected

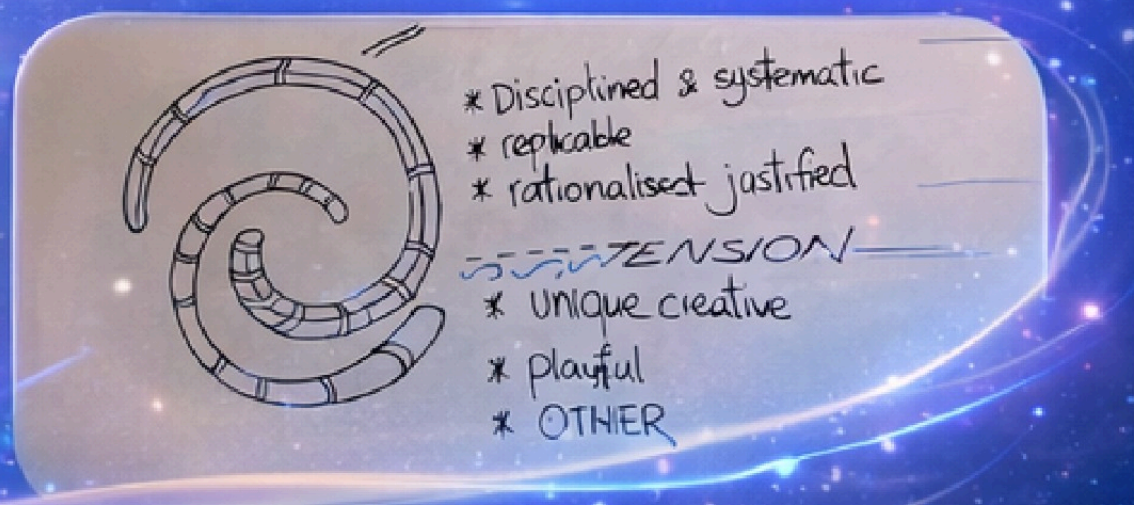
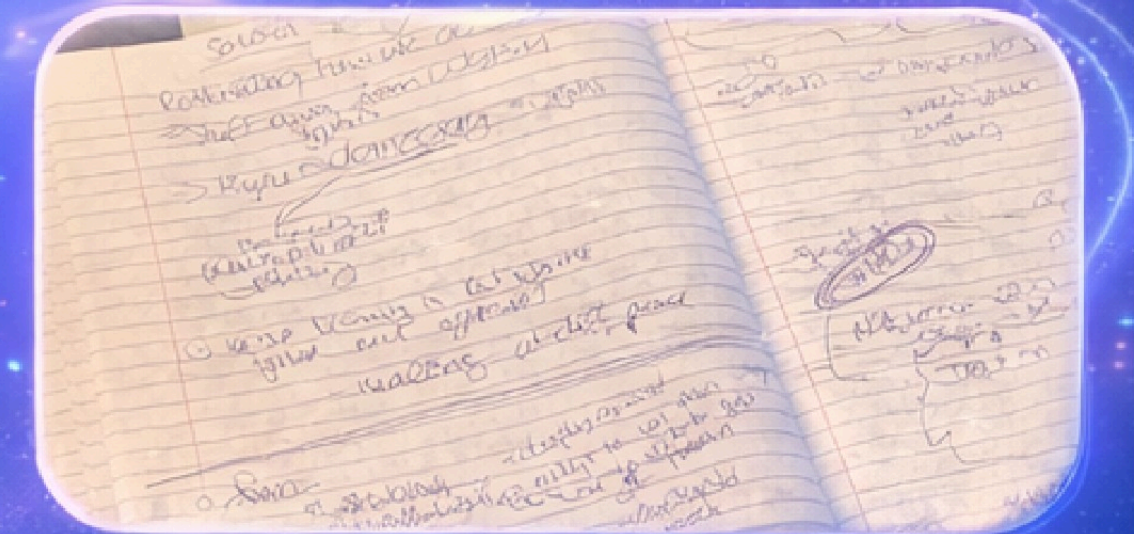


Weekly wānanga: self led

Fortnightly tuakana-teina hui

Monthly wānanga (ā-kanohi)

One-on-one



Project timeline

RECRUITMENT OF TAUIRA

- advertised the studentship
- interview applicants
- applicants notified

PROJECT START

- mihi whakataua led by Utiku & supported by whole team
- ground in Whakauae-Hauiti-tanga
- clear on roles & responsibilities
- draft run sheets & outcomes
- First ā-kanohi wānanga in Tāmaki
- tuakana-teina hui begin
- fortnightly team hui established

FINAL PRESENTATION & WRITE UP

- students present back to Whakauae whānau
- reflect on learning process
- next steps & relationships with Whakauae

CAPACITY & CAPABILITY ASSESMENT

- shift resource to meet the need (*can we do that?!*)
- do we have enough capacity in TUI team to deliver?
- Mock up deliverables (*how do they fit into TUI/Kia Puāwai?*)
- how can we bring on partners & stakeholders to share the load?

DATA ANALYSIS & DESIGN PLAN

- wānanga 2
- pulling together emerging themes from each research area
- developing a TUI design & dissemination plan



Emerging themes: analysis of the data using mahi-a-roopu

From Wānanga #2 in Tāmaki: 3.7.23



Systems Change

Systems change requires **Rethinking!**

Foundations of current kupu and systems in general are **outdated, foreign and don't fit for Māori**

- need to carve out space for Māori

Moving away from individualism
Holding space for healing

*Acknowledge that our change is located **within the systems**- the very systems which caused the problems in the first place. We must never be complacent.*

Reimagining capturing both the **old and new**

- tikanga, being grounded, fluid and flexible



Māori Identity

New identity frameworks!

Re-thinking what it means **to be Māori** based from our own diverse experiences **and not** others inclination

- Changes that should be "a given", can help **rangatahi feel safe**
- Embracing historical & cultural roles
- Māori identity **is not stagnant**- is ever evolving

Media: positive attributions = grateful for western world
Negative attributions = blood/stereotypes

- Control of our identities depending on outsiders can either confirm or deny
- *Do I have to conform? Do I have something to prove?*

Māori identity is always a debate



Home Papakāinga

Rangatahi



Increased collective consciousness
learnings about our history

*We don't think about what can't happen, we think about **what can** happen and **what needs** to happen*

Relevance- social media etc.
wide reaching for rangatahi (but can be limited eg. politics is best done in person)

Recognise the importance of youth engagement and **act on it** (MP's)

Age: **shifting roles** (old vs. young)
a space to be considered and heard

No big ideological shifts for far-right

- deficit thinking

Māori manipulated by media

- repetition of negative headlines
- consumption of media without critical thought

Co-governance controversy

- Dehumanising statistics

Lack of empathy

Dissent discourse & conspiracy theories

Miseducation

- affirmative action
- "brown" success separated
- media a dangerous source of miseducation
- Algorithms
- Keyboard warriors



ARORA

Have you ever faced a situation where your identity has been questioned?
If so, how did you respond?

ARORA

The data from this area showcased the various concepts...

participating in politics... challenge popular political.

HELP MAKE ROAD SIGNAGE BILINGUAL

WHAT'S HAPPENING AT MUMATAO

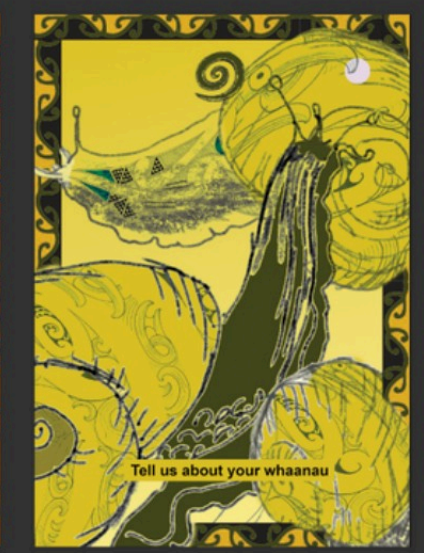
Green Tamatha Paul

LAND BACK POWER TO THE PEOPLE

Social media

Creative expression

Protests and dissent



Kumara.pdf

Parrot.pdf

Screens...023-07-28 at 1.55.06 PM.png

Screens...023-07-31 at 7.58.47 PM.png

Screens...023-07-31 at 8.00.00 PM.png

Screens...023-08-01 at 10.00.00 AM.png

Beyond the data: Rangatahi re-storying Māori health research

He mihi mahana.

Tēnā, whakapā mai ki a Tom mā:
tom@whakauae.co.nz,
ā, tirohia hoki tā mātou paetukutuku ki:
www.whakauae.co.nz



kiapuāwai
ake ngā uri whakatupu



"Kia puāwai ake ngā uri whakatupu" comes from a waiata 'Waenga Awaawa' (Richard Steedman, 2003) which speaks to Ngāti Hauiti aspirations for flourishing future generations