

MATCH REPORT



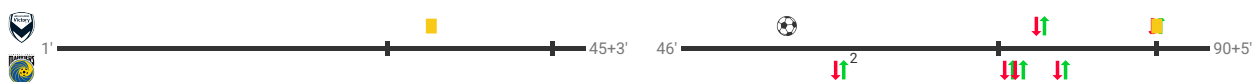
Melbourne Victory

1 – 0



Central Coast Mariners

⚽ 55' R. Pollicina



Starting lineup

GK		①	C. Newbon	
RB		①⁹	Z. McMeeken	
RCB		③	C. Bunge	■ 34'
LCB		⑱	K. Morrison	
LB		⑥⁶	A. Jancevski	
DMF		⑧¹	G. Maher	■ 90' ✓ 90'
RW		⑨	H. Furphy	✓ 79'
RCMF		⑳	R. Lowe	
LCMF		⑩	R. Pollicina	⚡ 55'
LW		⑤	S. Sakalis	
CF		⑰	K. White	

GK		①	S. Willacy	
RB		⑬	K. Buchanan	✓ 77'
RCB		③	E. Barwick-Grey	
LCB		⑱	T. King	
LB		⑳	L. Baumann	
RDMF		⑭	G. Kraszula	
LDMF		⑰	T. Quilligan	✓ 76'
RAMF		⑳	P. Trimis	
LAMF		⑦	A. Prakash	✓ 60'
CF		⑳	I. Di Sipio	✓ 81'
CF		⑰	J. Dos Santos	✓ 60'

Substitutes

RW		⑳	S. Techera	✓ 79'
DMF		㉑	R. Curtis	✓ 90'

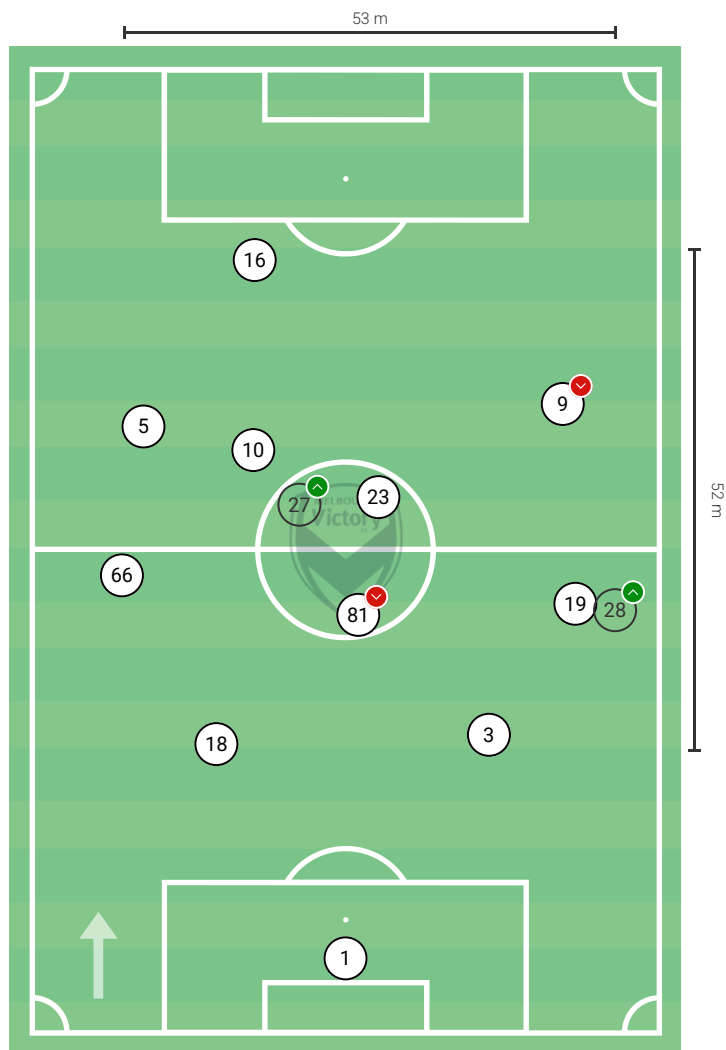
LAMF		⑥	I. Gomez	✓ 60'
CF		⑪	A. Rasmussen	✓ 60'
LDMF		⑩	T. Levin	✓ 76'
RB		⑤	A. Martin	✓ 77'
CF		⑫	T. Fuller	✓ 81'

Bench

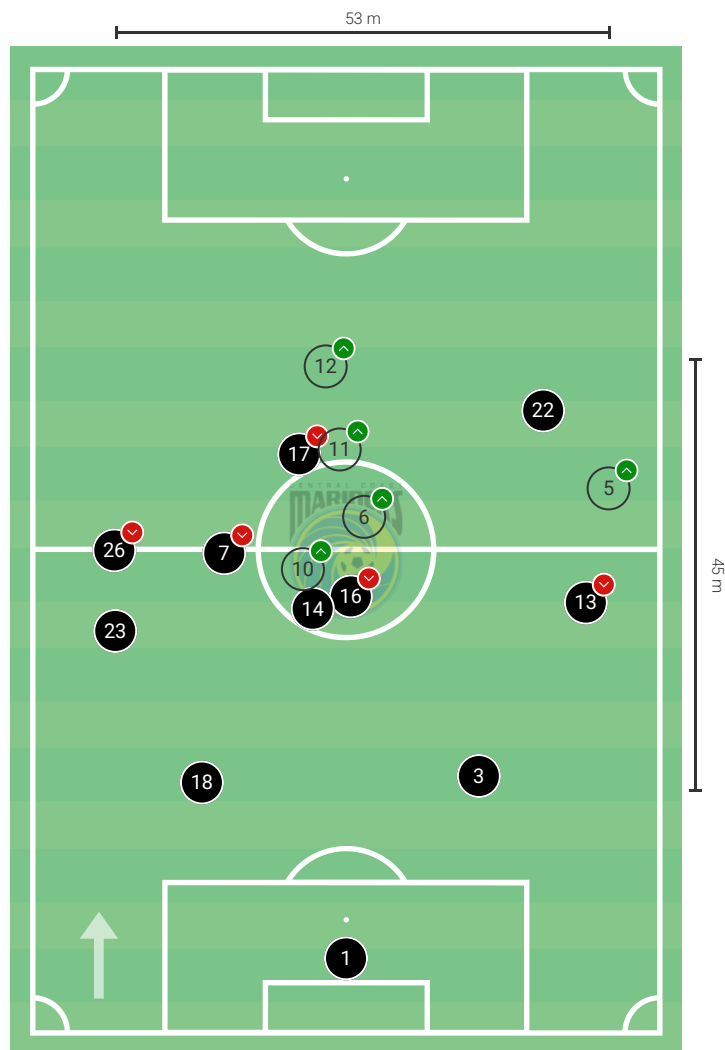
	⑳	P. Woodward
	㉒	L. Pickett
	⑰	P. O'Keeffe
	⑦	E. O'Grady

	⑮	A. Grove
--	---	----------

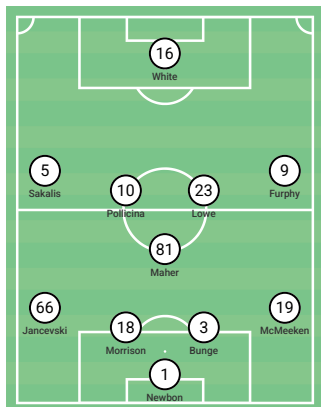
Melbourne Victory



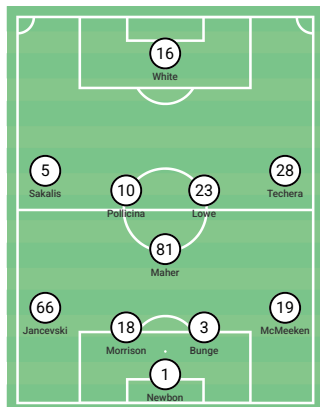
Central Coast Mariners



4-1-4-1 1' – 79'



4-1-4-1 79' – 90'



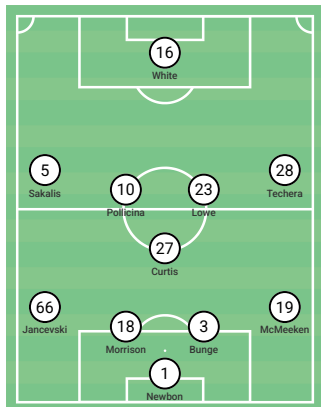
4-2-3-1 1' – 60'



4-2-3-1 60' – 76'



4-1-4-1 90' – 90+6'



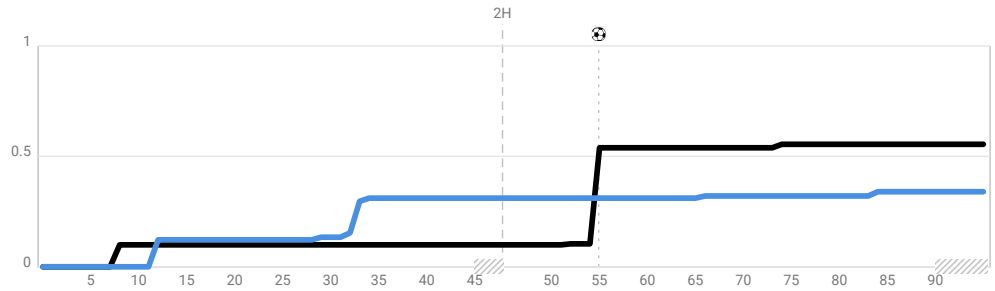
4-2-3-1 81' – 90+6'



Opportunities (xG)

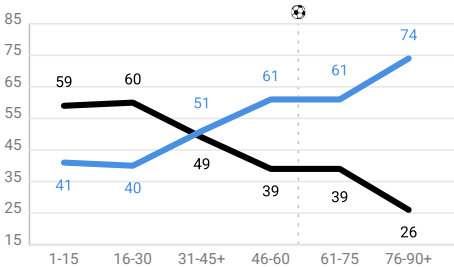
	Total	1st half	2nd half
● Melbourne Victory	0.55	0.10	0.46
R. Lowe	0.30	-	0.30
R. Pollicina	0.23	0.09	0.14
A. Jancevski	0.03	0.01	0.02
● Central Coast Mariners	0.34	0.31	0.03
T. Quilligan	0.14	0.14	-
A. Prakash	0.12	0.12	-
I. Di Sipio	0.02	0.02	-

xG dynamics



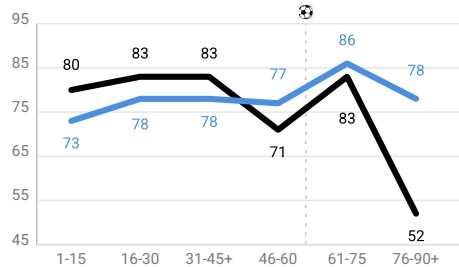
Ball possession, %

	Total	1st half	2nd half
● Melbourne Victory	45%	56%	35%
● Central Coast Mariners	55%	44%	65%



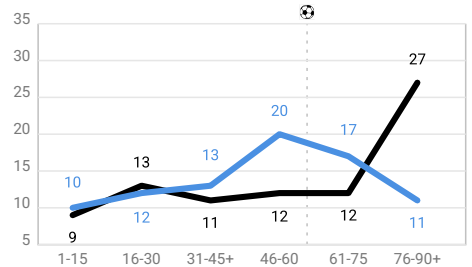
Pass accuracy, %

	Total	1st half	2nd half
● Melbourne Victory	77%	82%	71%
● Central Coast Mariners	79%	76%	80%



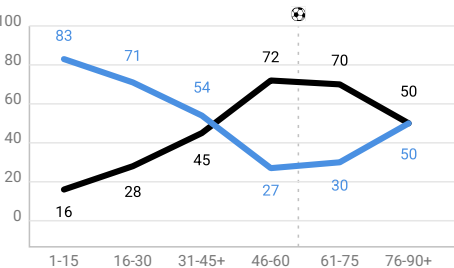
Long pass share, %

	Total	1st half	2nd half
● Melbourne Victory	13%	11%	16%
● Central Coast Mariners	14%	12%	15%



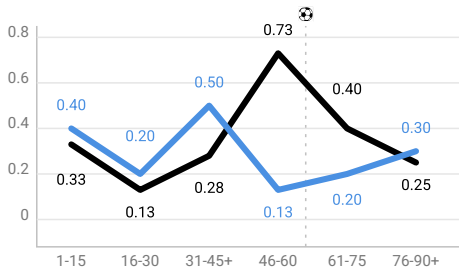
Duels win rate

	Total	1st half	2nd half
● Melbourne Victory	46%	34%	61%
● Central Coast Mariners	53%	66%	38%



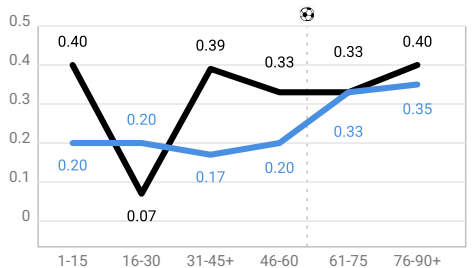
Attacks per minute

	Total	1st half	2nd half
● Melbourne Victory	0.35	0.25	0.44
● Central Coast Mariners	0.3	0.38	0.22



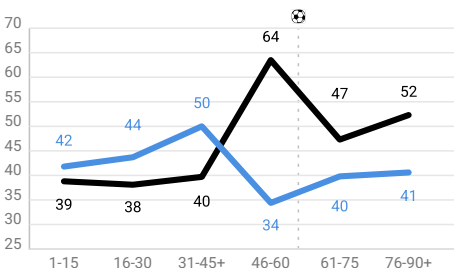
Recoveries per minute

	Total	1st half	2nd half
● Melbourne Victory	0.33	0.29	0.36
● Central Coast Mariners	0.24	0.19	0.3



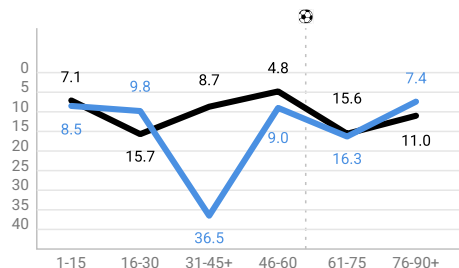
Average formation line, m

	Total	1st half	2nd half
● Melbourne Victory	45.4	38.9	54.1
● Central Coast Mariners	41.7	45.4	38.6



Pressing intensity (PPDA)

	Total	1st half	2nd half
● Melbourne Victory	9.0	9.2	8.8
● Central Coast Mariners	11.2	11.9	10.2



General

Goals	1	0
xG	0.55	0.34
Shots / on target	6/3	7/2
Shots on post / blocked / wide	0/1/2	0/2/3
From penalty area / on target	3/3 100%	4/0 0%
Outside penalty area / on target	3/0 0%	3/2 67%
Average shot distance (m)	21.9	21.5
Corners	1	4
Free kicks	2	3
Offsides	3	1
Fouls / suffered	17/5	6/17
Yellow / red cards	2/0	0/0

Attacks

Total / with shots	34/6 18%	29/6 21%
Positional attacks / with shots	30/6 20%	20/3 15%
Counterattacks	1	1
Free kicks / with shots	2/0 0%	3/2 67%
Corners / with shots	1/0 0%	4/1 25%

Defence

Sliding tackles	0	0
Interceptions	52	47
Clearances	14	10
Passes allowed per def. action (PPDA)	9.0	11.2

Transitions

Recoveries / low / medium / high	89/33/40/16	85/42/29/14
Opponent half recoveries	33	25
Losses / low / medium / high	139/22/55/62	151/27/72/52

Duels

Total duels / won	89/41 46%	89/48 54%
Offensive duels / won	29/7 24%	33/9 27%
Defensive duels / won	33/24 73%	29/22 76%
Loose ball duels / won	4/1 25%	4/3 75%
Aerial duels / won	23/9 39%	23/14 61%
Challenge intensity	3.2	3.5
Dribbles / successful	6/2 33%	6/0 0%

Possession

Possession %	45	55
Pure possession time	23:32	28:21
Number of possessions	122	133
Possessions reaching opponent half	66 54%	61 46%
Possessions reaching opponent penalty area	11 9%	11 8%
Average possession duration	00:11	00:12
Dead time	46:07	

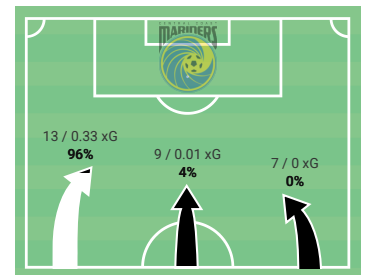
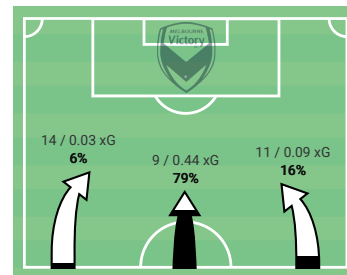
Open play possessions

Total	108	101
Short (0-10 sec)	70	58
Medium (10-20 sec)	14	29
Long (20-45 sec)	19	10
Very long (45+ sec)	5	4

Passes

Total passes / accurate	428/332 78%	487/385 79%
Forward passes / accurate	164/111 68%	196/135 69%
Back passes / accurate	82/78 95%	97/94 97%
Lateral passes / accurate	145/124 86%	153/130 85%
Progressive passes / accurate	66/35 53%	70/32 46%
Long passes / accurate	58/21 36%	70/31 44%
Passes to final third / accurate	46/19 41%	41/22 54%
Average pass to final third length (m)	33.1	29.9
Passes to penalty area / accurate	17/3 18%	15/4 27%
Smart passes / accurate	1/1 100%	1/0 0%
Shot assists	0	2
Through passes / accurate	2/1 50%	1/0 0%
Crosses / accurate	8/1 13%	12/2 17%
Crosses: low / high / blocked	3/5/0	6/6/0
Deep completions	4	2
Match tempo	18.6	17.4
Average pass length (m)	17.5	16.3

Attacks by flanks and danger level





Player	Minutes played	Goals / xG	Assists / xA	Actions / successful	Shots / on target	Passes / accurate	Crosses / accurate	Dribbles / successful	Duels / won	Losses / own half	Recoveries / opponent half	Touches in penalty area	Offsides	Yellow / Red cards
<div>19</div> Z. McMeeken	98'	-	-	57/22 39%	-	27/14 52%	2/0 0%	-	11/6 55%	28/8	11/5	1	1	-
<div>3</div> C. Bunge	98'	-	-	75/56 75%	-	66/53 80%	-	-	2/1 50%	10/4	10/3	-	-	1/0
<div>18</div> K. Morrison	98'	-	-	86/69 80%	-	77/65 84%	-	-	2/2 100%	10/4	11/1	2	-	-
<div>66</div> A. Jancevski	98'	0/0.03	-	51/33 65%	2/1 50%	43/29 67%	1/1 100%	-	2/2 100%	12/2	9/1	2	-	-
<div>81</div> G. Maher	92'	-	-	50/30 60%	-	31/24 77%	-	-	11/6 55%	12/6	15/5	-	-	1/0
<div>9</div> H. Furphy	81'	-	-	38/12 32%	-	11/5 45%	2/0 0%	2/0 0%	19/7 37%	16/3	3/2	-	-	-
<div>23</div> R. Lowe	98'	0/0.30	-	53/31 58%	1/1 100%	27/24 89%	-	1/0 0%	14/6 43%	8/5	7/4	3	-	-
<div>10</div> R. Pollicina	98'	1/0.23	-	58/32 55%	3/1 33%	38/27 71%	1/0 0%	-	8/3 38%	14/3	9/5	1	-	-
<div>5</div> S. Sakalis	98'	-	-	48/31 65%	-	35/27 77%	1/0 0%	3/2 67%	6/4 67%	11/2	6/5	4	1	-
<div>16</div> K. White	98'	-	-	25/8 32%	-	10/8 80%	1/0 0%	-	8/0 0%	11/1	1/1	2	1	-
<div>28</div> S. Techera	17'	-	-	8/3 38%	-	4/2 50%	-	-	1/1 100%	2/1	-	-	-	-
<div>27</div> R. Curtis	6'	-	-	4/2 50%	-	2/1 50%	-	-	2/1 50%	1/0	1/1	-	-	-

Duels

Player	Minutes played	Defensive duels / won	Offensive duels / won	Aerial duels / won	Loose ball duels / won	Shots blocked	Interceptions / Clearances	Sliding tackles / won	Fouls / suffered	Free kicks	Direct free kicks	Corners served	Throw-ins
<div>19</div> Z. McMeeken	98'	6/3 50%	3/1 33%	1/1 100%	1/1 100%	-	11/2	-	3/2	-	-	-	22
<div>3</div> C. Bunge	98'	1/1 100%	-	1/0 0%	-	-	6/2	-	-	-	-	-	-
<div>18</div> K. Morrison	98'	1/1 100%	-	1/1 100%	-	-	11/4	-	-	-	-	-	-
<div>66</div> A. Jancevski	98'	2/2 100%	-	-	-	-	3/1	-	-	1	-	-	14
<div>81</div> G. Maher	92'	4/4 100%	1/0 0%	5/2 40%	1/0 0%	2	6/2	-	2/0	-	-	-	-
<div>9</div> H. Furphy	81'	5/2 40%	9/2 22%	4/3 75%	1/0 0%	-	1/1	-	4/1	-	-	-	-
<div>23</div> R. Lowe	98'	6/5 83%	7/1 14%	1/0 0%	-	-	6/1	-	1/0	-	-	-	1
<div>10</div> R. Pollicina	98'	2/1 50%	3/1 33%	3/1 33%	-	-	4/0	-	3/2	1	-	1	-
<div>5</div> S. Sakalis	98'	3/2 67%	3/2 67%	-	-	-	3/0	-	1/0	-	-	-	-
<div>16</div> K. White	98'	-	2/0 0%	5/0 0%	1/0 0%	-	1/0	-	3/0	-	-	-	-
<div>28</div> S. Techera	17'	1/1 100%	-	-	-	-	0/1	-	-	-	-	-	-
<div>27</div> R. Curtis	6'	-	-	2/1 50%	-	-	-	-	-	-	-	-	-

Set pieces

Passing

Player	Minutes played	Forward passes / accurate	Back passes / accurate	Lateral passes / accurate	Short + medium passes / accurate	Long passes / accurate	Progressive passes / accurate	Passes to final third / accurate	Through passes / accurate	Deep completions	Key passes	Second / third assists	Shot assists	Average pass length
<div>19</div> Z. McMeeken	98'	9/4 44%	9/9 100%	4/0 0%	22/14 64%	3/0 0%	5/0 0%	2/0 0%	-	-	-	-	-	12
<div>3</div> C. Bunge	98'	33/23 70%	5/5 100%	27/26 96%	48/47 98%	18/6 33%	17/11 65%	8/5 63%	1/0 0%	-	-	-	-	22.6
<div>18</div> K. Morrison	98'	34/25 74%	8/7 88%	33/31 94%	67/62 93%	10/3 30%	11/5 45%	8/3 38%	-	-	-	-	-	19.2
<div>66</div> A. Jancevski	98'	23/14 61%	15/15 100%	4/2 50%	34/25 74%	9/4 44%	8/4 50%	8/3 38%	-	-	-	-	-	16.6
<div>81</div> G. Maher	92'	12/7 58%	7/7 100%	7/6 86%	28/23 82%	3/1 33%	6/5 83%	8/3 38%	-	1	-	-	-	16.6
<div>9</div> H. Furphy	81'	4/3 75%	3/2 67%	3/1 33%	9/5 56%	-	1/1 100%	-	-	1	-	-	-	14.5
<div>23</div> R. Lowe	98'	9/9 100%	10/8 80%	1/1 100%	27/24 89%	-	2/0 0%	-	-	-	-	-	-	10.1
<div>10</div> R. Pollicina	98'	16/10 63%	9/9 100%	8/6 75%	30/24 80%	7/3 43%	7/4 57%	4/1 25%	-	1	-	-	-	14.8
<div>5</div> S. Sakalis	98'	13/8 62%	10/10 100%	4/2 50%	33/26 79%	1/1 100%	4/3 75%	5/4 80%	-	-	2	-	-	10.8
<div>16</div> K. White	98'	3/3 100%	4/4 100%	3/1 33%	8/8 100%	1/0 0%	1/1 100%	-	1/1 100%	1	1	-	-	10.9
<div>28</div> S. Techera	17'	1/1 100%	1/1 100%	2/1 50%	4/2 50%	-	1/0 0%	-	-	-	-	-	-	10.5
<div>27</div> R. Curtis	6'	1/0 0%	-	1/1 100%	2/1 50%	-	-	1/0 0%	-	-	-	-	-	23.8



Stats

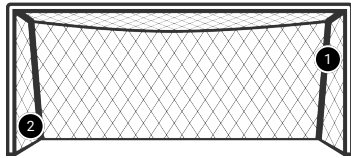
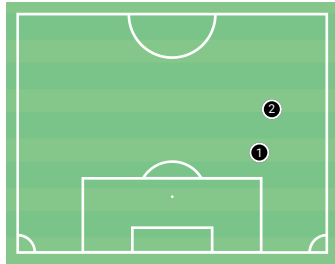
	Match	1st half	2nd half
Passes / accurate	63/59 94%	46/45 98%	17/14 82%
Passes beyond own third / accurate	12/9 75%	6/5 83%	6/4 67%
Back passes to GK	45	32	13
Shots against	2	2	0
Conceded goals	0	0	0

	Match	1st half	2nd half
Saves	2	2	0
Reflex saves	0	0	0
Conceded penalty goals / saved	0/0	0/0	0/0
Aerial duels / won	0	0	0
Exits	3	2	1

Shots against

◇ Goal ● Save ■ Reflex save

SHOTS ON TARGET

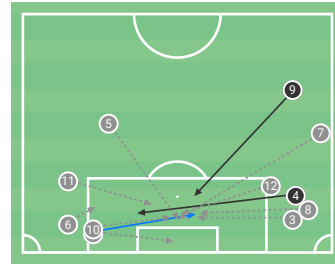


#	Player	Time	xCG
1	7 A. Prakash	12'	0.23
2	17 J. Dos Santos	34'	0.02

Crosses against

— Claimed - - Defender action — Opponent action

CROSSES MAP

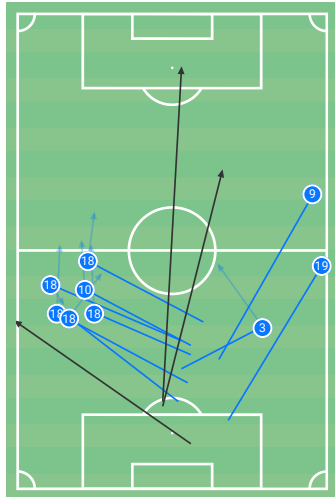


#	Player	Time	Outcome
1	22 P. Trimis	10'	Claim
2	22 P. Trimis	10'	Defended
3	23 L. Baumann	32'	Defended
4	14 G. Kraszula	33'	Touch
5	13 K. Buchanan	33'	Defended
6	22 P. Trimis	43'	Defended
7	23 L. Baumann	47'	Defended
8	23 L. Baumann	48'	Defended
9	26 I. Di Sipio	64'	Touch
10	22 P. Trimis	85'	Defended
11	22 P. Trimis	93'	Defended
12	12 T. Fuller	95'	Defended

Passes beyond own third

● Successful ■ Field player loss — Unsuccessful - - Hand pass

PASSES MAP

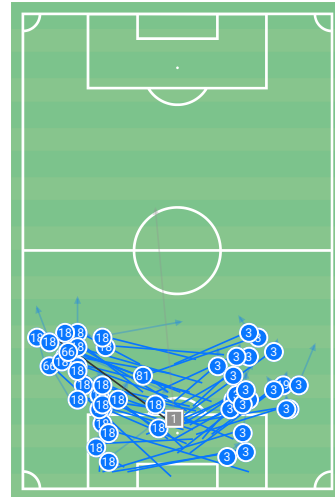


	Successful	Field player loss	Unsuccessful	Hand pass	Σ
18 K. Morrison	5	0	5		
9 H. Furphy	1	0	1		
10 R. Pollicina	1	0	1		
19 Z. McMeeken	1	0	1		
3 C. Bunge	1	0	1		
Unsuccessful			3		

Passes inside own third

● Successful ■ Field player loss — Unsuccessful - - Hand pass

PASSES MAP



	Successful	Field player loss	Unsuccessful	Hand pass	Σ
18 K. Morrison	25	0	25		
3 C. Bunge	20	0	20		
66 A. Jancevski	2	0	2		
1 C. Newbon	0	1	1		
81 G. Maher	1	0	1		
19 Z. McMeeken	1	0	1		
Unsuccessful			1		



Player	Minutes played	Goals / xG	Assists / xA	Actions / successful	Shots / on target	Passes / accurate	Crosses / accurate	Dribbles / successful	Duels / won	Losses / own half	Recoveries / opponent half	Touches in penalty area	Offsides	Yellow / Red cards
13 K. Buchanan	79'	-	-	41/27 66%	-	31/25 81%	1/0 0%	-	3/1 33%	10/5	3/2	1	-	-
3 E. Barwick-Grey	98'	0/0.01	-	75/53 71%	1/0 0%	63/45 71%	-	-	7/5 71%	11/3	15/0	2	-	-
18 T. King	98'	-	-	76/62 82%	-	66/57 86%	-	-	1/1 100%	10/9	9/1	-	-	-
23 L. Baumann	98'	-	0/0.02	91/61 67%	-	65/46 71%	3/0 0%	-	16/10 63%	25/9	10/3	-	-	-
14 G. Kraszula	98'	-	-	86/69 80%	-	69/63 91%	1/1 100%	-	10/6 60%	9/4	13/4	-	-	-
16 T. Quilligan	79'	0/0.14	-	63/44 70%	1/0 0%	51/40 78%	-	1/0 0%	8/4 50%	12/4	7/3	2	-	-
22 P. Trimis	98'	-	-	38/17 45%	-	23/16 70%	4/0 0%	1/0 0%	7/1 14%	19/5	3/2	5	-	-
7 A. Prakash	63'	0/0.12	-	39/26 67%	1/1 100%	21/18 86%	-	1/0 0%	7/5 71%	11/3	8/3	-	-	-
26 I. Di Sipio	83'	0/0.02	0/0.01	54/27 50%	1/0 0%	27/21 78%	1/1 100%	3/0 0%	16/6 38%	19/8	7/4	1	-	-
17 J. Dos Santos	63'	0/0.01	-	19/12 63%	1/1 100%	12/8 67%	-	-	4/3 75%	5/0	2/0	2	1	-
6 I. Gomez	35'	-	-	20/13 65%	-	17/12 71%	-	-	1/1 100%	7/3	3/2	1	-	-
11 A. Rasmussen	35'	0/0.01	-	9/3 33%	1/0 0%	2/1 50%	-	-	3/2 67%	5/1	-	-	-	-
10 T. Levin	19'	0/0.02	-	9/5 56%	1/0 0%	6/4 67%	-	-	2/1 50%	3/3	-	1	-	-
5 A. Martin	19'	-	-	7/6 86%	-	6/5 83%	1/0 0%	-	1/1 100%	1/0	1/1	-	-	-
12 T. Fuller	15'	-	-	5/1 20%	-	3/1 33%	1/0 0%	-	1/0 0%	2/0	-	-	-	-

Duels

Player	Minutes played	Defensive duels / won	Offensive duels / won	Aerial duels / won	Loose ball duels / won	Shots blocked	Interceptions / Clearances	Sliding tackles / won	Fouls / suffered
13 K. Buchanan	79'	1/1 100%	1/0 0%	1/0 0%	-	-	6/2	-	-
3 E. Barwick-Grey	98'	1/0 0%	1/0 0%	4/4 100%	1/1 100%	-	10/2	-	0/3
18 T. King	98'	1/1 100%	-	-	-	-	7/1	-	-
23 L. Baumann	98'	4/4 100%	8/4 50%	3/2 67%	1/0 0%	-	5/2	-	0/5
14 G. Kraszula	98'	5/3 60%	2/1 50%	2/1 50%	1/1 100%	-	2/0	-	2/2
16 T. Quilligan	79'	4/3 75%	2/0 0%	2/1 50%	-	-	2/1	-	1/0
22 P. Trimis	98'	1/1 100%	5/0 0%	1/0 0%	-	-	5/0	-	1/0
7 A. Prakash	63'	2/2 100%	3/1 33%	2/2 100%	-	1	2/1	-	0/2
26 I. Di Sipio	83'	5/3 60%	7/2 29%	4/1 25%	-	-	4/1	-	2/3
17 J. Dos Santos	63'	2/2 100%	1/0 0%	-	1/1 100%	-	1/0	-	-
6 I. Gomez	35'	1/1 100%	-	-	-	-	1/0	-	-
11 A. Rasmussen	35'	-	1/0 0%	2/2 100%	-	-	1/0	-	0/1
10 T. Levin	19'	-	-	2/1 50%	-	-	-	-	-
5 A. Martin	19'	-	1/1 100%	-	-	-	-	-	0/1
12 T. Fuller	15'	-	1/0 0%	-	-	-	1/0	-	-

Set pieces

Free kicks	Direct free kicks	Corners served	Throw-ins
-	-	-	10
-	-	-	-
-	-	-	-
-	-	-	24
-	-	-	-
-	-	-	-
-	-	-	-
3	1	2	1
-	-	-	1
-	-	-	-
-	-	1	-
-	-	-	5
-	-	1	-

Passing

Player	Minutes played	Forward passes / accurate	Back passes / accurate	Lateral passes / accurate	Short + medium passes / accurate	Long passes / accurate	Progressive passes / accurate	Passes to final third / accurate	Through passes / accurate	Deep completions	Key passes	Second / third assists	Shot assists	Average pass length
13 K. Buchanan	79'	11/6 55%	8/8 100%	10/10 100%	28/25 89%	2/0 0%	4/1 25%	1/0 0%	-	-	-	-	-	13.3
3 E. Barwick-Grey	98'	33/19 58%	4/4 100%	23/20 87%	46/40 87%	17/5 29%	12/5 42%	8/2 25%	-	-	-	-	-	22.9
18 T. King	98'	25/19 76%	4/3 75%	33/32 97%	54/51 94%	12/6 50%	12/4 33%	2/2 100%	-	-	-	-	-	21.5
23 L. Baumann	98'	35/22 63%	12/12 100%	13/9 69%	52/41 79%	10/5 50%	8/3 38%	6/2 33%	-	1	1	-	1	14.4
14 G. Kraszula	98'	19/15 79%	23/23 100%	19/17 89%	63/59 94%	5/3 60%	3/2 67%	2/1 50%	1/0 0%	-	1	-	-	12.4
16 T. Quilligan	79'	28/20 71%	13/12 92%	7/7 100%	40/33 83%	11/7 64%	13/8 62%	8/6 75%	-	1	-	-	-	14.9
22 P. Trimis	98'	6/6 100%	9/9 100%	7/3 43%	18/16 89%	1/0 0%	1/1 100%	2/1 50%	-	-	-	-	-	11.3
7 A. Prakash	63'	7/4 57%	4/4 100%	6/6 100%	20/18 90%	1/0 0%	2/1 50%	3/1 33%	-	-	-	-	-	14.8
26 I. Di Sipio	83'	17/13 76%	9/9 100%	2/1 50%	25/20 80%	1/0 0%	8/4 50%	3/3 100%	-	-	2	-	1	10.4
17 J. Dos Santos	63'	2/2 100%	5/4 80%	1/1 100%	12/8 67%	-	-	-	-	-	-	-	-	9.8
6 I. Gomez	35'	5/3 60%	3/3 100%	6/3 50%	14/11 79%	3/1 33%	3/2 67%	5/3 60%	-	-	-	-	-	19
11 A. Rasmussen	35'	-	-	-	2/1 50%	-	-	-	-	-	-	-	-	7.5
10 T. Levin	19'	1/0 0%	2/2 100%	3/2 67%	6/4 67%	-	1/0 0%	1/1 100%	-	-	-	-	-	13.4
5 A. Martin	19'	3/3 100%	-	2/1 50%	5/5 100%	1/0 0%	1/1 100%	-	-	-	-	-	-	19.5
12 T. Fuller	15'	-	1/1 100%	2/0 0%	2/1 50%	-	-	-	-	-	-	-	-	15.2



Stats

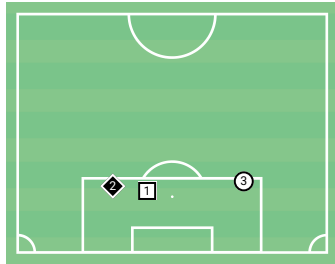
	Match	1st half	2nd half
Passes / accurate	29/27 93%	5/5 100%	24/22 92%
Passes beyond own third / accurate	3/2 67%	1/1 100%	2/1 50%
Back passes to GK	14	4	10
Shots against	3	0	3
Conceded goals	1	0	1

	Match	1st half	2nd half
Saves	2	0	2
Reflex saves	1	0	1
Conceded penalty goals / saved	0/0	0/0	0/0
Aerial duels / won	0	0	0
Exits	4	0	4

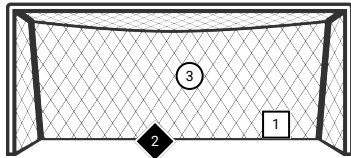
Shots against

◆ Goal ○ Save □ Reflex save

SHOTS ON TARGET



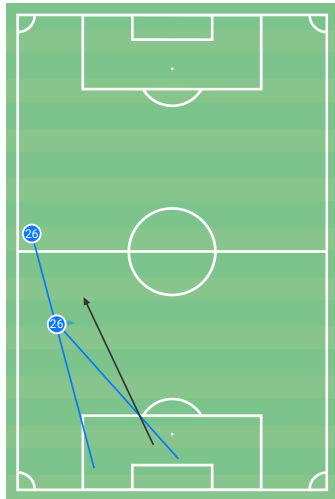
#	Player	Time	xCG
1	23 R. Lowe	55'	0.54
2	10 R. Pollicina	55'	0.11
3	66 A. Jancevski	74'	0.02



Passes beyond own third

● Successful ■ Field player loss — Unsuccessful - - Hand pass

PASSES MAP

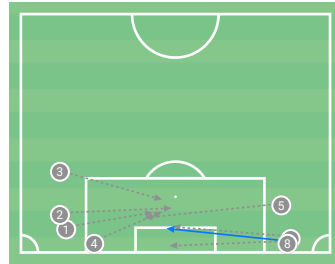


	●	■	Σ
Successful	2	0	2
26 I. Di Sipio	2	0	2
Unsuccessful			1

Crosses against

— Claimed - - Defender action — Opponent action

CROSSES MAP

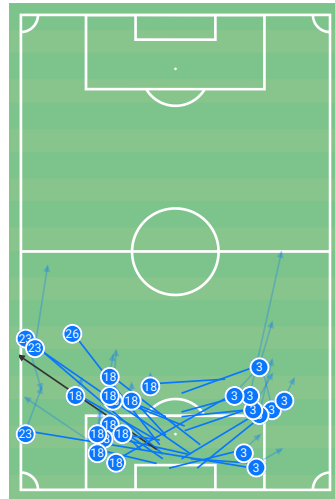


#	Player	Time	Outcome
1	9 H. Furphy	8'	Defended
2	19 Z. McMeeken	31'	Defended
3	9 H. Furphy	38'	Defended
4	19 Z. McMeeken	44'	Defended
5	5 S. Sakalis	46'	Defended
6	16 K. White	71'	Defended
7	10 R. Pollicina	83'	Claim
8	10 R. Pollicina	83'	Defended

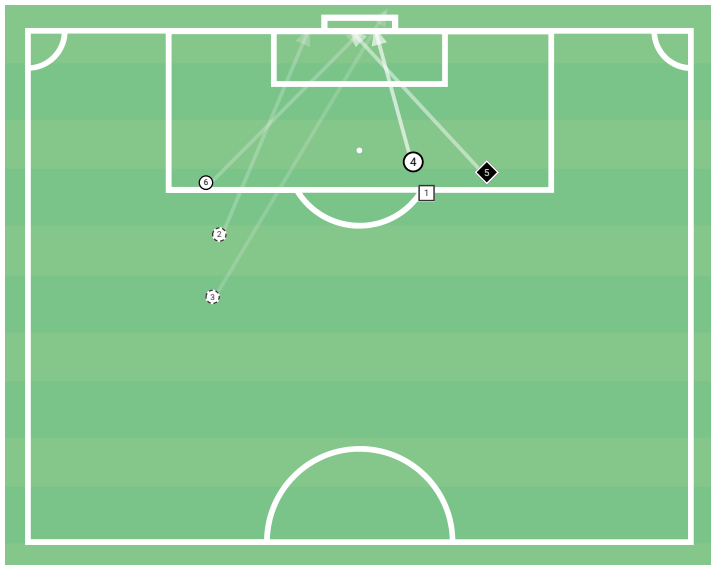
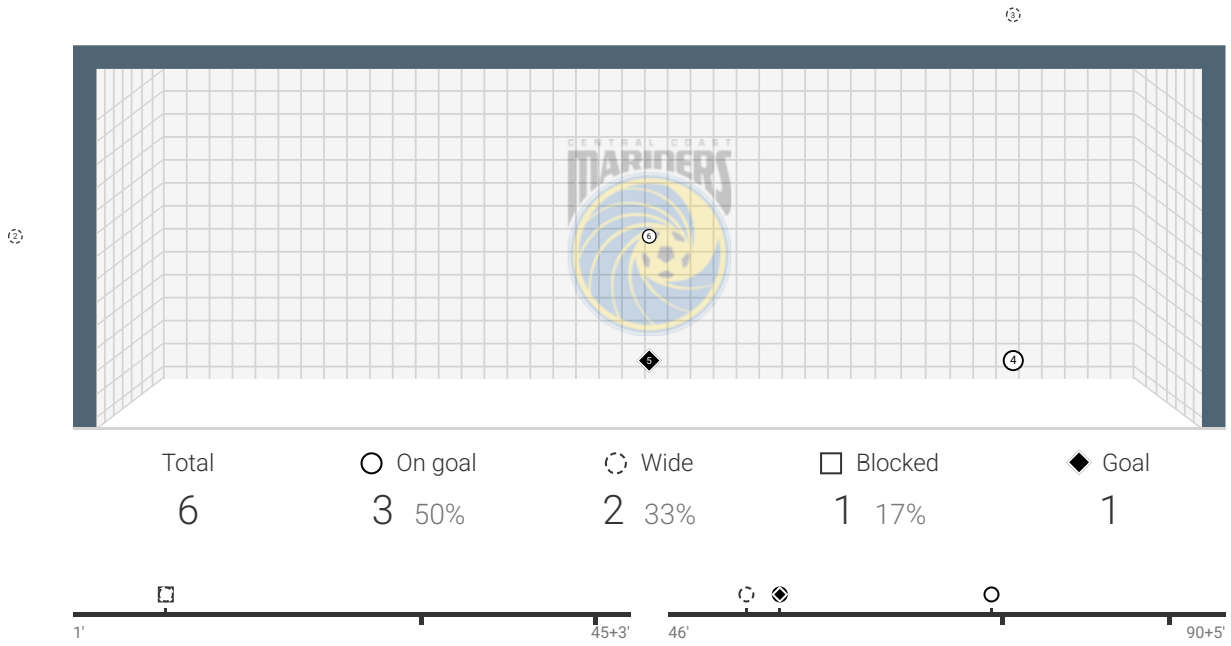
Passes inside own third

● Successful ■ Field player loss — Unsuccessful - - Hand pass

PASSES MAP

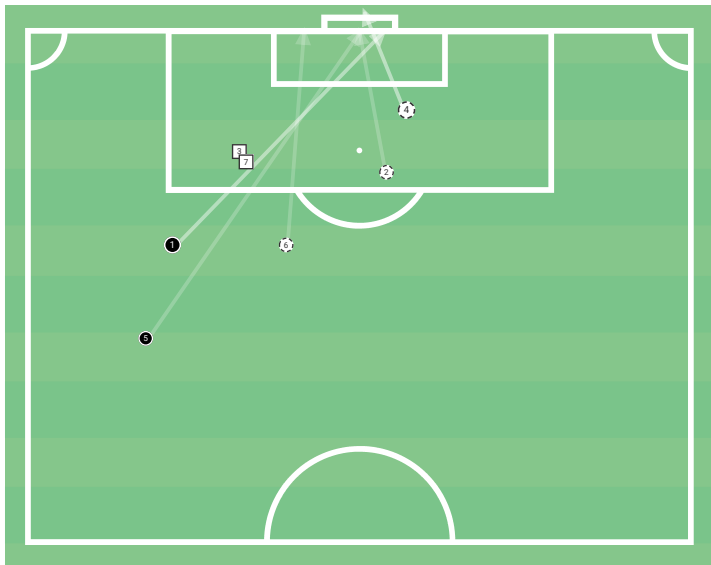
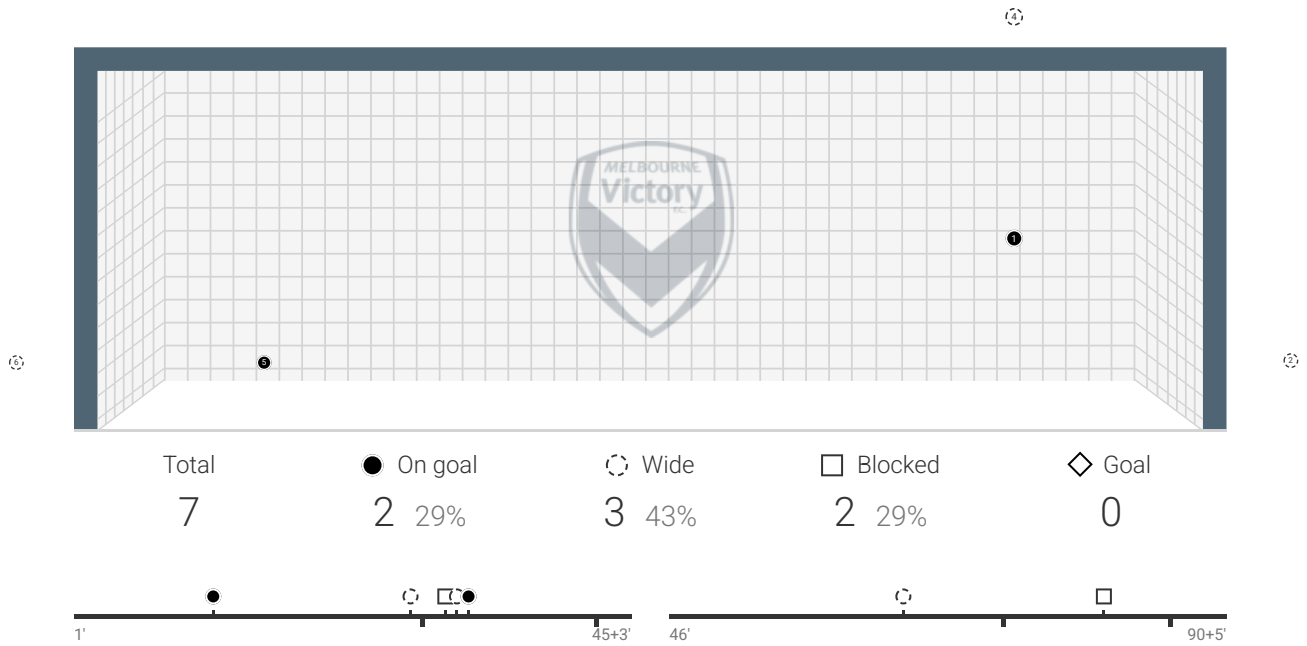


	●	■	Σ
Successful	25	0	25
18 T. King	11	0	11
3 E. Barwick-Grey	9	0	9
23 L. Baumann	4	0	4
26 I. Di Sipio	1	0	1
Unsuccessful			1



#	Player	Time	Shot type	xG*	PsxG*
1	10 R. Pollicina	8'	Right foot	0.09	-
2	66 A. Jancevski	8'	Left foot	0.01	-
3	10 R. Pollicina	52'	Right foot	<0.01	-
4	23 R. Lowe	55'	Right foot	0.30	0.54
5	10 R. Pollicina	55'	Right foot	0.14	0.11
6	66 A. Jancevski	74'	Left foot	0.02	0.02
Total xG:				0.55	0.67

* dataglossary.wyscout.com/xg

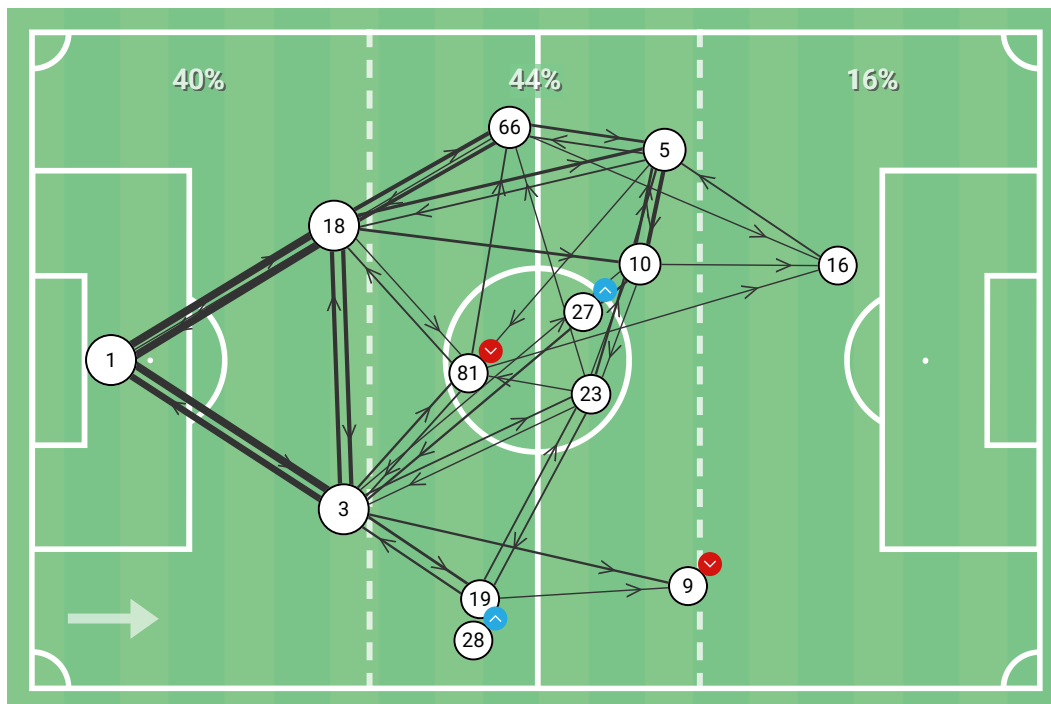


#	Player	Time	Shot type	xG*	PsxG*
1	7 A. Prakash	12'	Right foot	0.12	0.23
2	3 E. Barwick-Grey	29'	Head	0.01	-
3	26 I. Di Sipio	32'	Right foot	0.02	-
4	16 T. Quilligan	33'	Head, after corner	0.14	-
5	17 J. Dos Santos	34'	Left foot	0.01	0.02
6	11 A. Rasmussen	66'	Right foot	<0.01	-
7	10 T. Levin	84'	Right foot	0.02	-
Total xG:				0.34	0.25

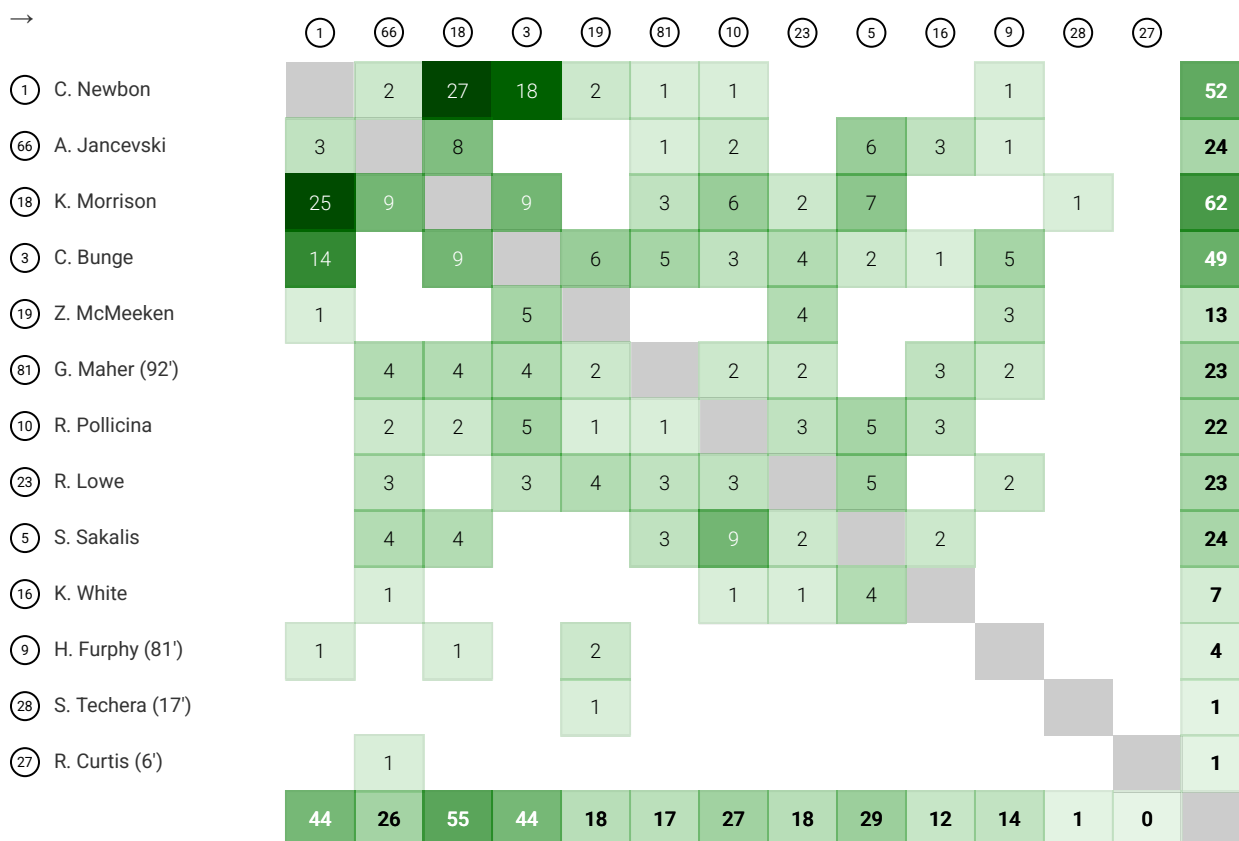
* dataglossary.wyscout.com/xg

Shows only combinations with more than 3 passes in one direction.

Dot size corresponds to the number of touches.

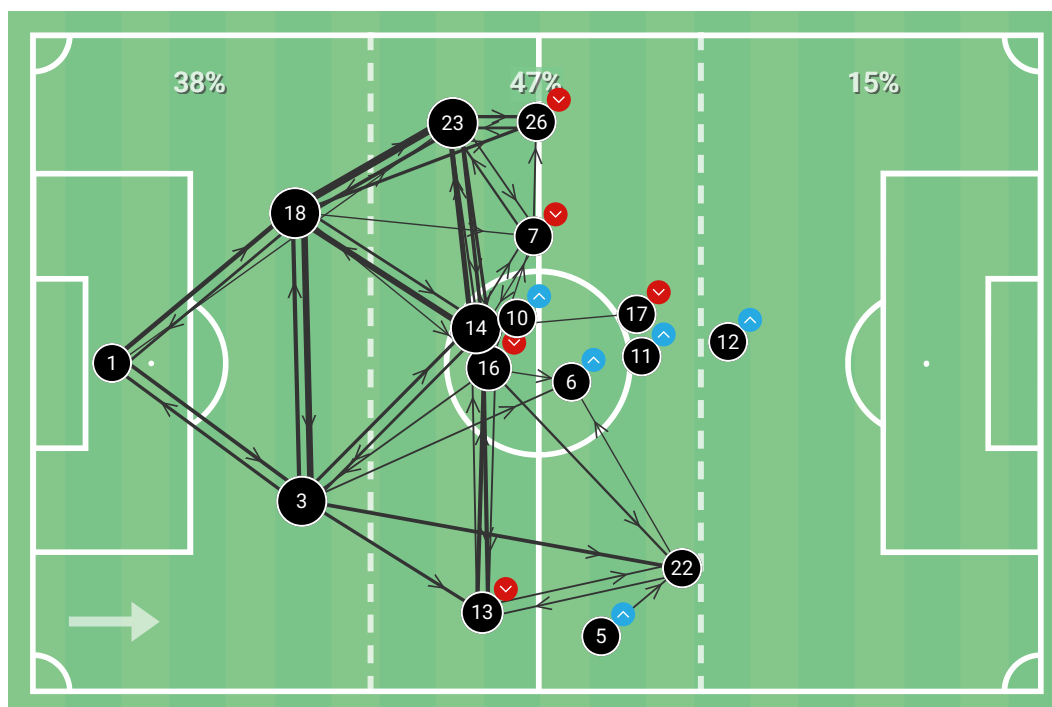


Color intensity indicates the most frequent pass combinations.



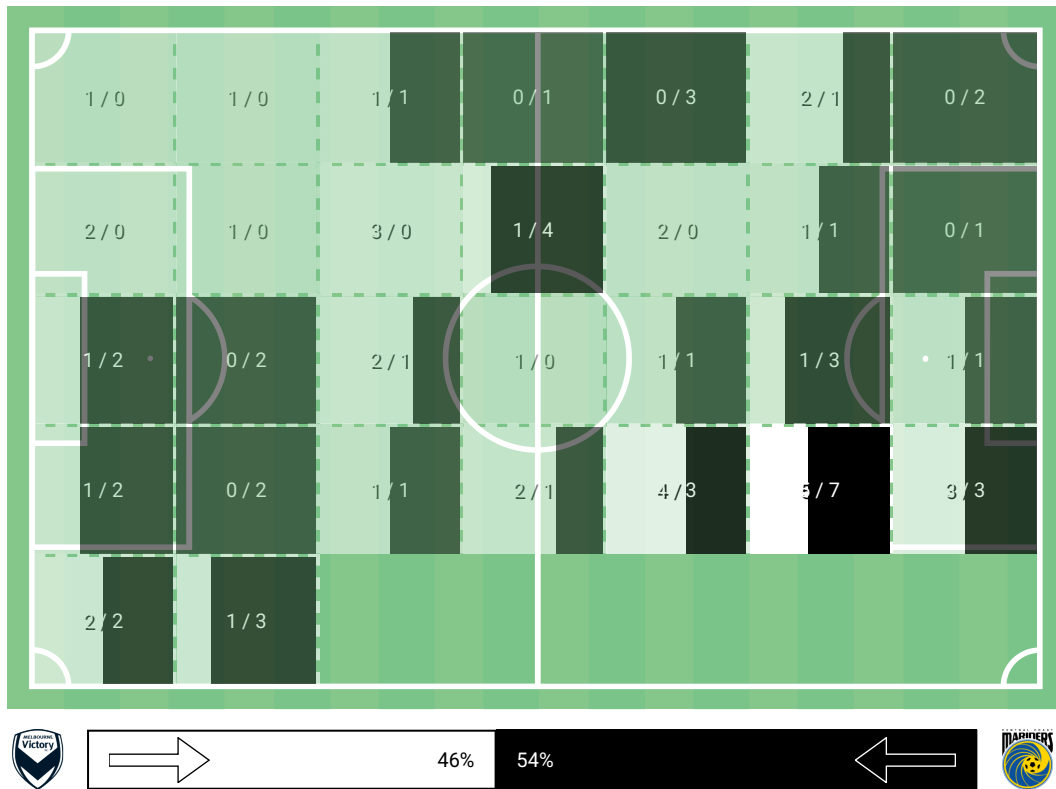
Shows only combinations with more than 3 passes in one direction.

Dot size corresponds to the number of touches.



Color intensity indicates the most frequent pass combinations.

→	1	23	18	3	13	16	14	7	22	26	17	6	11	10	5	12	
1 S. Willacy		3	10	8						2							23
23 L. Baumann	1		8	2		7	8	4		7		1	1	2			41
18 T. King	6	17		14		3	6	3		7							56
3 E. Barwick-Grey	7		9		7	1	7		8			4		2			45
13 K. Buchanan (79')		1	2	2		9	4		4								22
16 T. Quilligan (79')		5	2	4	4		5	3	5	1	2	3	1				35
14 G. Kraszula		11	13	6	9	6		4	2	2		1			2		56
7 A. Prakash (63')		5	1		1	2	3		1	4							17
22 P. Trimis					4	1	2					3		1	1		12
26 I. Di Sipio (83')		6	2	1			1	1			1	2	1				15
17 J. Dos Santos (63')					1		3		2	1							7
6 I. Gomez (35')	1	2		2	1		2		1	1						1	11
11 A. Rasmussen (35')							1										1
10 T. Levin (19')		1					2		1								4
5 A. Martin (19')									4						1		5
12 T. Fuller (15')							1										1
	15	51	47	39	27	29	45	15	28	25	3	14	3	6	3	1	



● CENTRAL COAST MARINERS

○ MELBOURNE VICT...

- 66 A. Jancevski
- 18 K. Morrison
- 3 C. Bunge
- 19 Z. McMeeken
- 81 G. Maher (92')
- 10 R. Pollicina
- 23 R. Lowe
- 5 S. Sakalis
- 16 K. White
- 9 H. Furphy (81')
- 28 S. Techera (17')
- 27 R. Curtis (6')

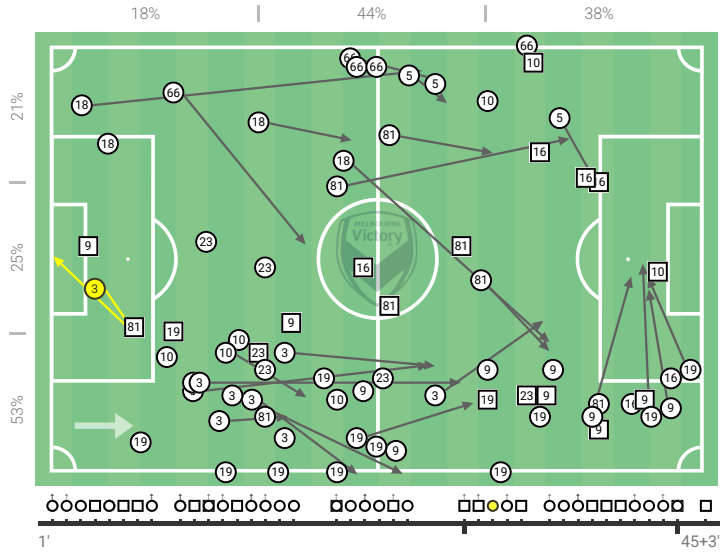
	23	18	3	13	16	14	7	22	28	17	6	11	10	5	12	
23 L. Baumann																
18 T. King																
3 E. Barwick-Grey																
13 K. Buchanan (79')																
16 T. Quilligan (79')																
14 G. Kraszula																
7 A. Prakash (63')																
22 P. Trimis																
28 I. Di Sipio (83')																
17 J. Dos Santos (63')																
6 I. Gomez (35')																
11 A. Rasmussen (35')																
10 T. Levin (19')																
5 A. Martin (19')																
12 T. Fuller (15')																
66 A. Jancevski								2								2
18 K. Morrison								1	1							2
3 C. Bunge					1				1							2
19 Z. McMeeken	2								8							10
81 G. Maher (92')					2	1	3	1		2		2				11
10 R. Pollicina				2	1	2		1	1					1		8
23 R. Lowe	1				1	4	2	1	2	1			1		1	14
5 S. Sakalis			1	1			1	1			1					5
16 K. White	1	1	5			1										8
9 H. Furphy (81')	9				3	2	1		3	1						19
28 S. Techera (17')	1															1
27 R. Curtis (6')												1	1			2
	14	1	6	3	8	10	7	7	16	4	1	3	2	1	1	

Melbourne Victory

Player		Last 5 matches
19 Z. McMeeken	28	-
9 H. Furphy	16	-
10 R. Pollicina	14	-
81 G. Maher	12	-
Total	139	120.2

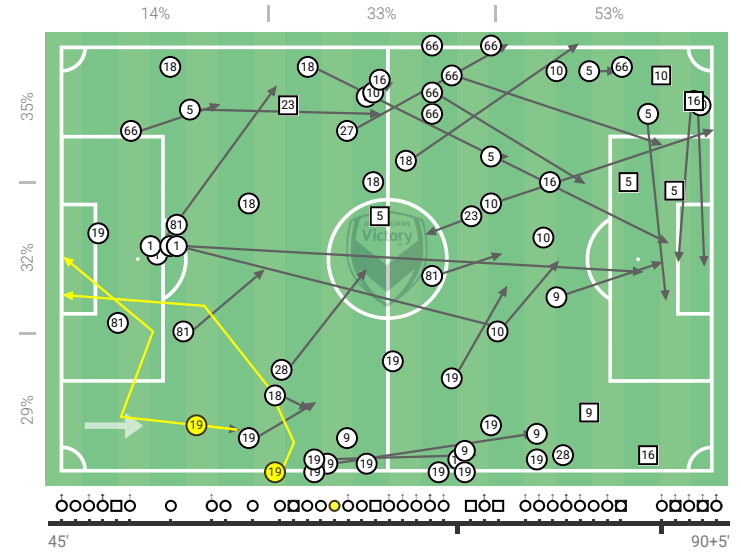
○ → Pass □ Ground duel ○ Other ● Loss leading to opponent shot

1ST HALF



Losses type	
Forward pass	38
Ground duel	26
Lateral or back pass	16
Other	59

2ND HALF

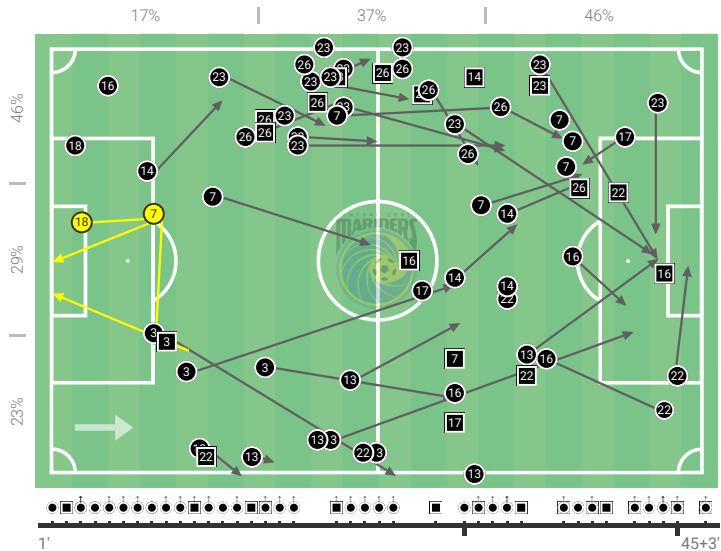


Central Coast Mariners

Player		Last 5 matches
23 L. Baumann	25	-
26 I. Di Sipio	19	-
22 P. Trimis	19	-
16 T. Quilligan	12	-
Total	151	125.4

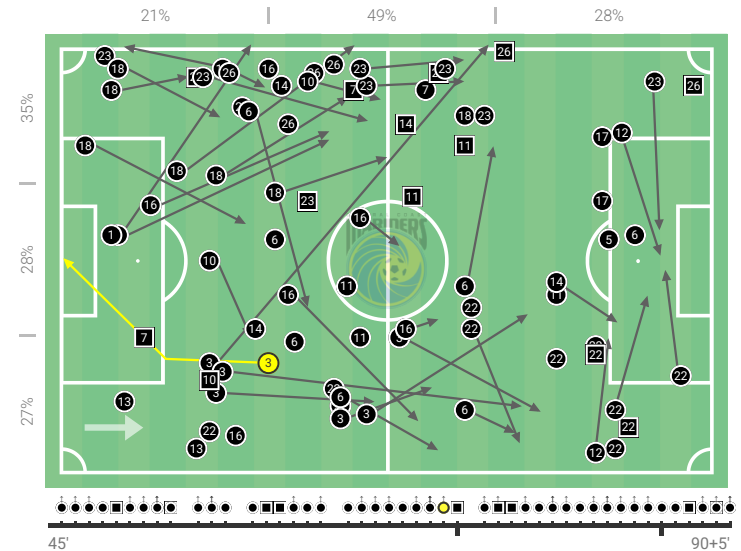
● → Pass □ Ground duel □ Cross ● Other ● Loss leading to opponent shot

1ST HALF



Losses type	
Forward pass	48
Ground duel	30
Lateral or back pass	18
Cross	1
Other	54

2ND HALF

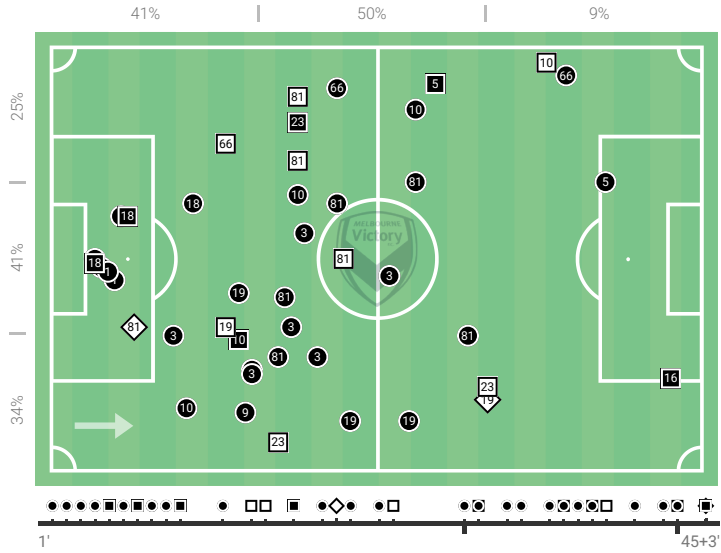


Melbourne Victory

Player		Last 5 matches
81 G. Maher	15	-
19 Z. McMeeken	11	-
18 K. Morrison	11	-
3 C. Bunge	10	-
Total	89	85.2

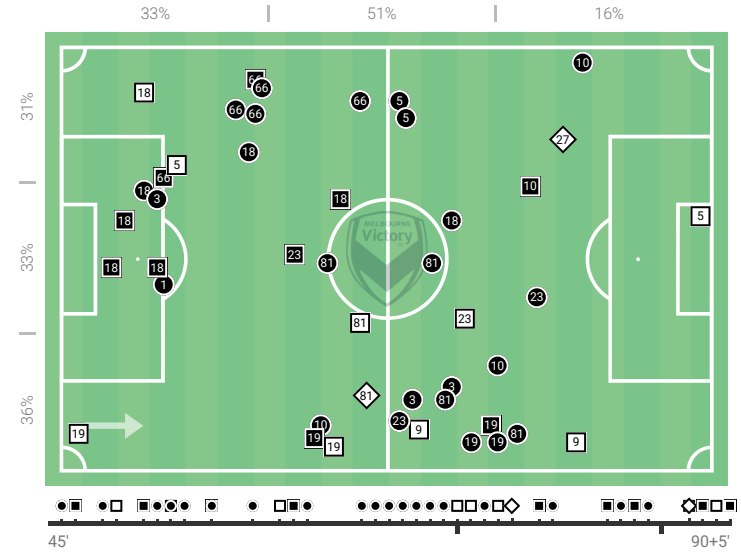
● Positioning □ Ground duel ■ Interception ◆ Aerial duel

1ST HALF



Recoveries type	
Positioning	52
Ground duel	17
Interception	16
Aerial duel	4

2ND HALF

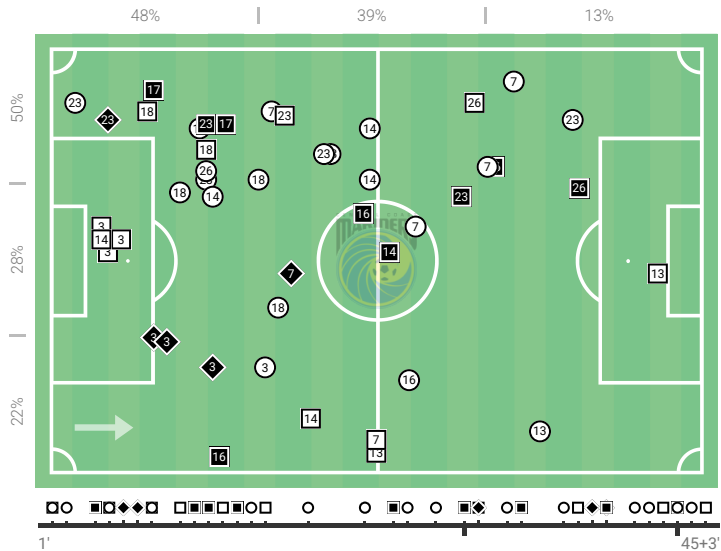


Central Coast Mariners

Player		Last 5 matches
3 E. Barwick-Grey	15	-
14 G. Kraszula	13	-
23 L. Baumann	10	-
18 T. King	9	-
Total	85	85.8

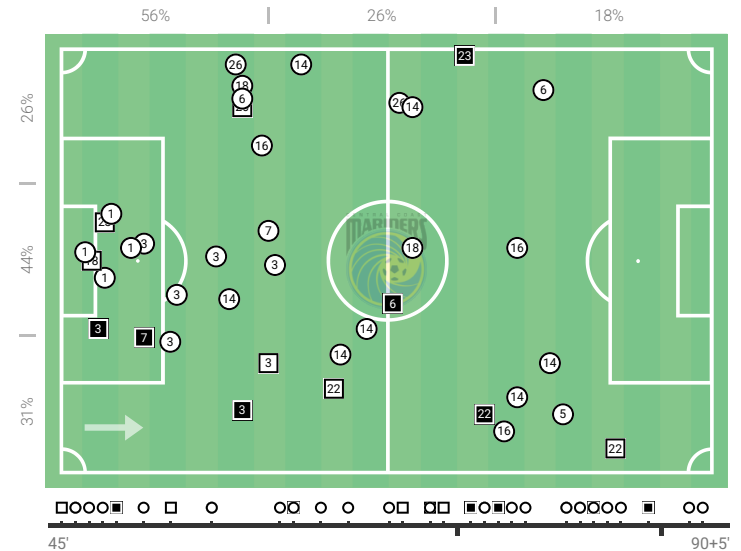
○ Positioning □ Interception ■ Ground duel ◆ Aerial duel

1ST HALF



Recoveries type	
Positioning	47
Interception	18
Ground duel	15
Aerial duel	5

2ND HALF



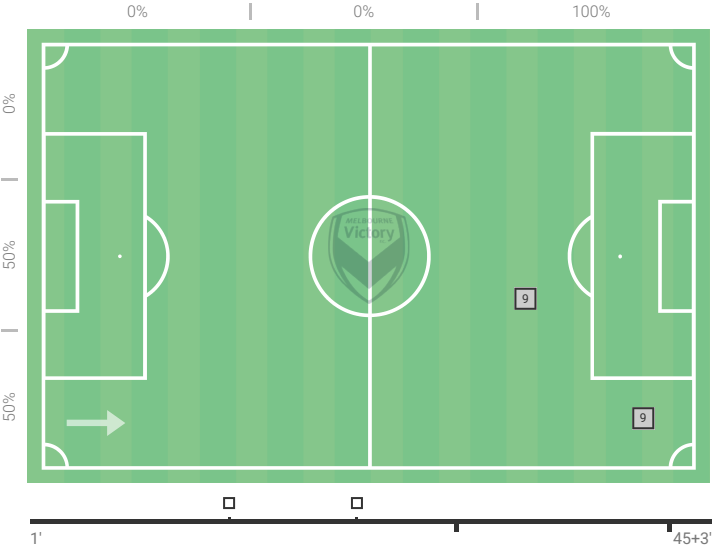


Melbourne Victory

Player			Last 5 matches	
5	S. Sakalis	3/2 67%	-	-
9	H. Furphy	2/0 0%	-	-
23	R. Lowe	1/0 0%	-	-
Total		6/2 33%	14.3	52%

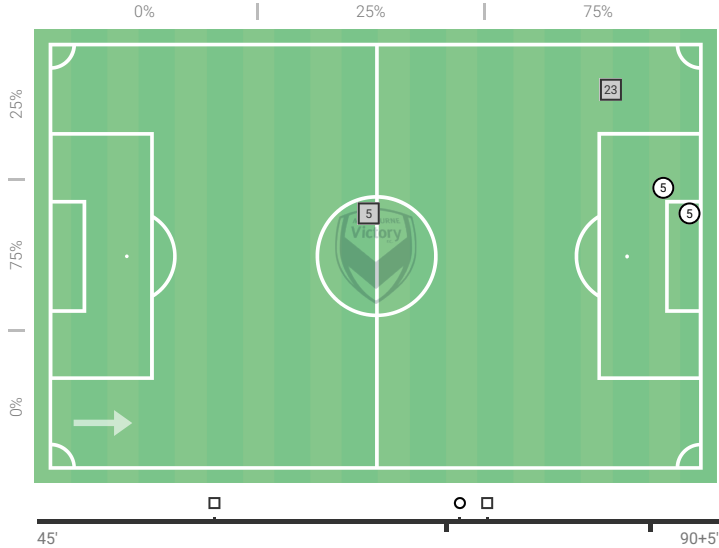
○ Successful ■ Unsuccessful

1ST HALF



Player		I. Gomez	E. Barwick-Grey	A. Prakash	G. Kraszula
5	S. Sakalis	1/0	1/0	-	-
9	H. Furphy	-	-	-	1/0
23	R. Lowe	-	-	1/0	-
Total		1/0	1/0	1/0	1/0

2ND HALF

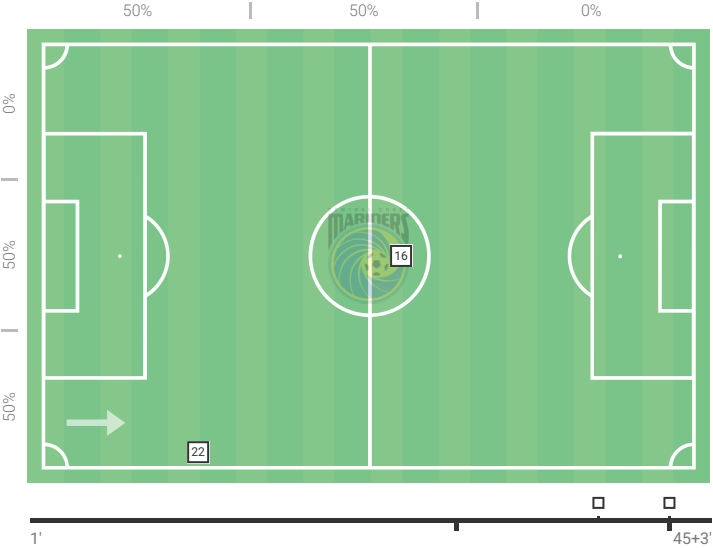


Central Coast Mariners

Player			Last 5 matches	
26	I. Di Sipio	3/0 0%	-	-
22	P. Trimis	1/0 0%	-	-
16	T. Quilligan	1/0 0%	-	-
7	A. Prakash	1/0 0%	-	-
Total		6/0 0%	14.0	49%

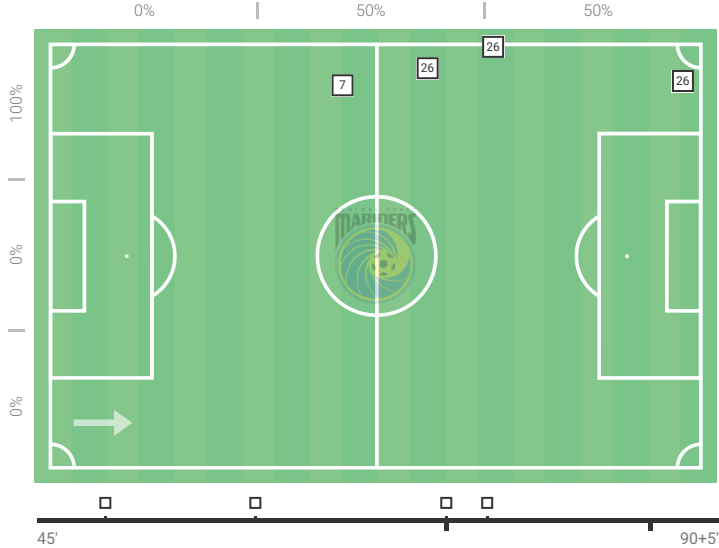
● Successful □ Unsuccessful

1ST HALF



Player		Z. McMeeken	H. Furphy	G. Maher	R. Pollicina
26	I. Di Sipio	3/0	-	-	-
22	P. Trimis	-	-	-	1/0
16	T. Quilligan	-	-	1/0	-
7	A. Prakash	-	1/0	-	-
Total		3/0	1/0	1/0	1/0

2ND HALF



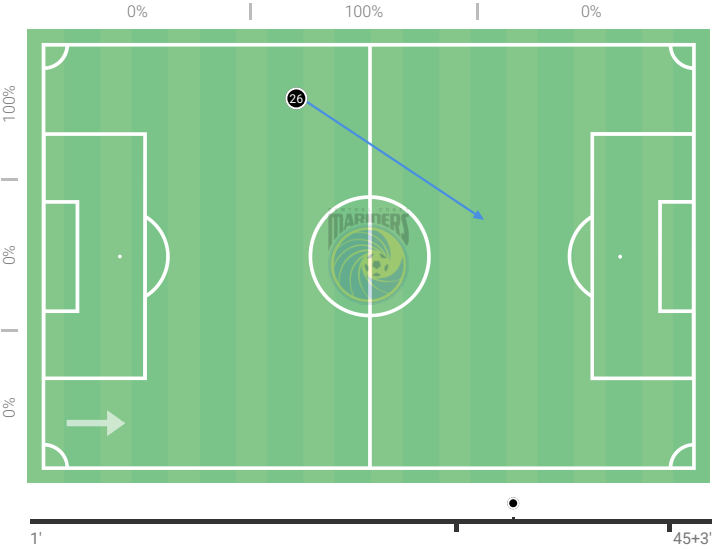


Central Coast Mariners

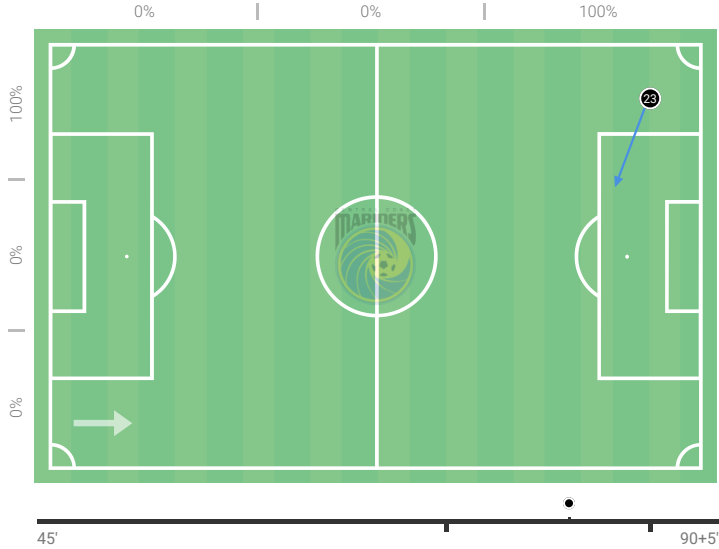
Player		Last 5 matches
26 I. Di Sipio	1	-
23 L. Baumann	1	-
Total	2	3.2

Player	T. Levin	I. Di Sipio
26 I. Di Sipio	-	1/1 100%
23 L. Baumann	1/1 100%	-
Total	1/1	1/1

1ST HALF



2ND HALF



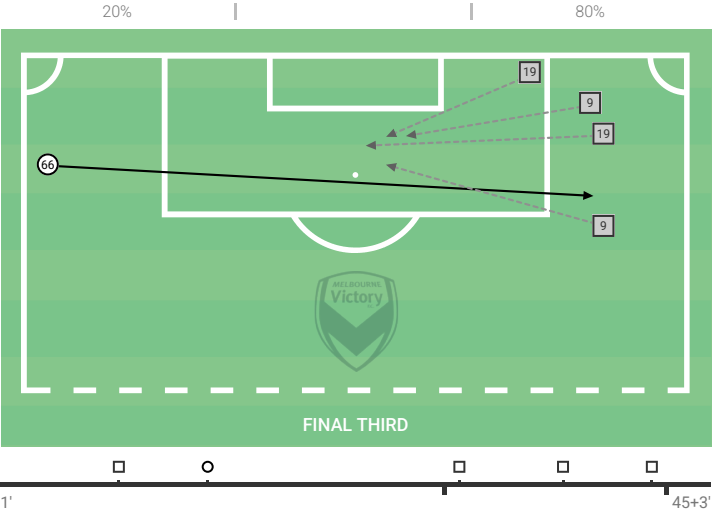


Melbourne Victory

Player			Last 5 matches	
9	H. Furphy	2/0 0%	-	-
19	Z. McMeeken	2/0 0%	-	-
66	A. Jancevski	1/1 100%	-	-
5	S. Sakalis	1/0 0%	-	-
Total		8/1 13%	11.9	32%

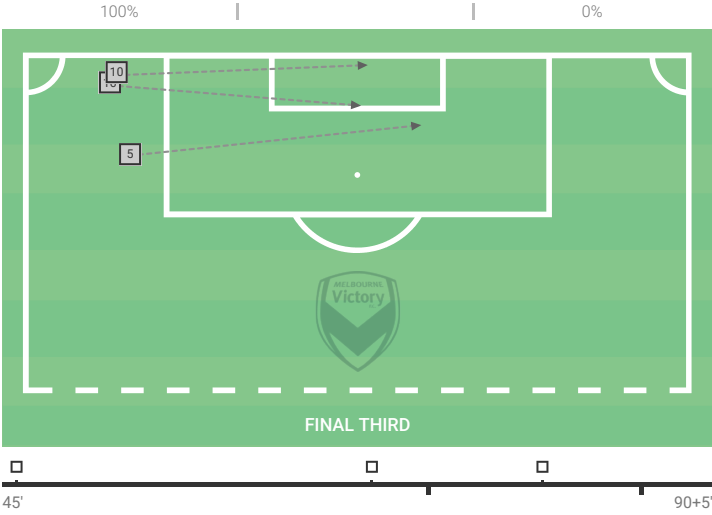
○ Successful □ Unsuccessful

1ST HALF



Player		H. Furphy
9	H. Furphy	-
19	Z. McMeeken	-
66	A. Jancevski	1/1 100%
5	S. Sakalis	-
Total		1/1

2ND HALF

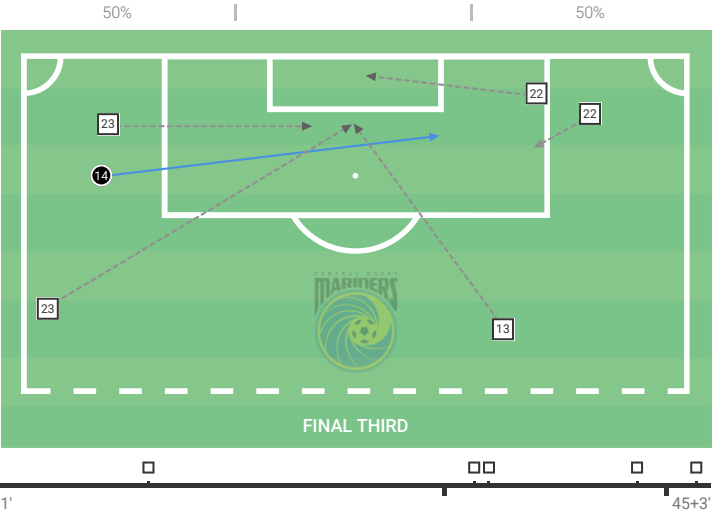


Central Coast Mariners

Player			Last 5 matches	
22	P. Trimis	4/0 0%	-	-
23	L. Baumann	3/0 0%	-	-
14	G. Kraszula	1/1 100%	-	-
13	K. Buchanan	1/0 0%	-	-
Total		12/2 17%	11.3	21%

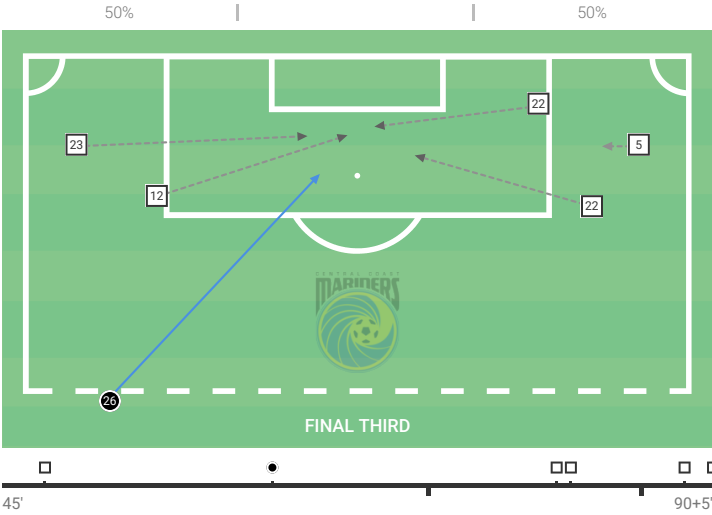
● Successful □ Unsuccessful

1ST HALF



Player		I. Gomez	T. Quilligan
22	P. Trimis	-	-
23	L. Baumann	-	-
14	G. Kraszula	-	1/1 100%
13	K. Buchanan	-	-
Total		1/1	1/1

2ND HALF

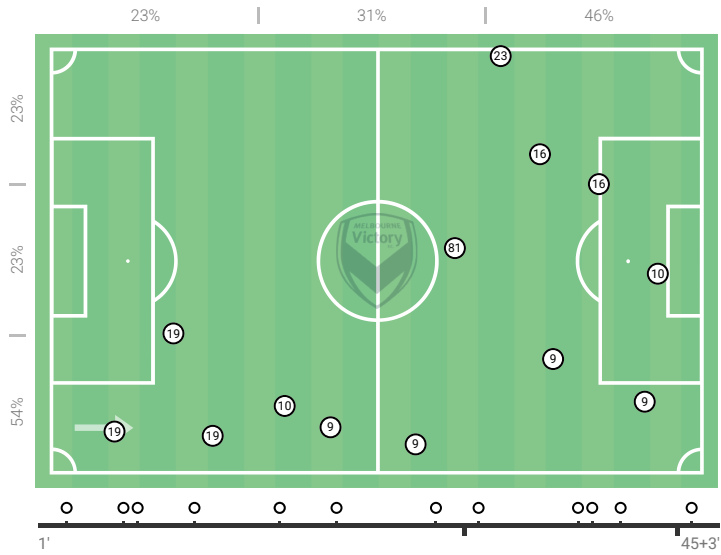


Melbourne Victory

Player		Last 5 matches
9 H. Furphy	4	-
16 K. White	3	-
19 Z. McMeeken	3	-
10 R. Pollicina	3	-
Total	17	11.6

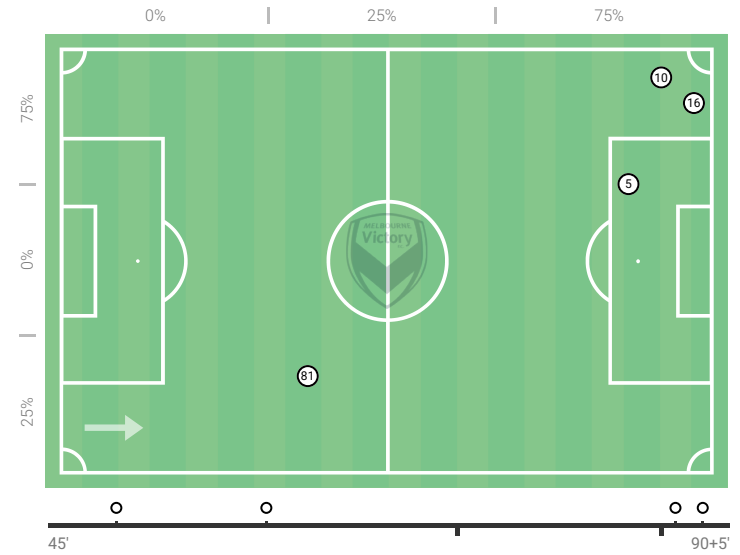
○ Regular foul

1ST HALF



Player	L. Baumann	I. Di Sipio	E. Barwick-Grey	A. Prakash
9 H. Furphy	4/0	-	-	-
16 K. White	-	-	3/0	-
19 Z. McMeeken	1/0	2/0	-	-
10 R. Pollicina	-	1/0	-	-
Total	5/0	3/0	3/0	2/0

2ND HALF

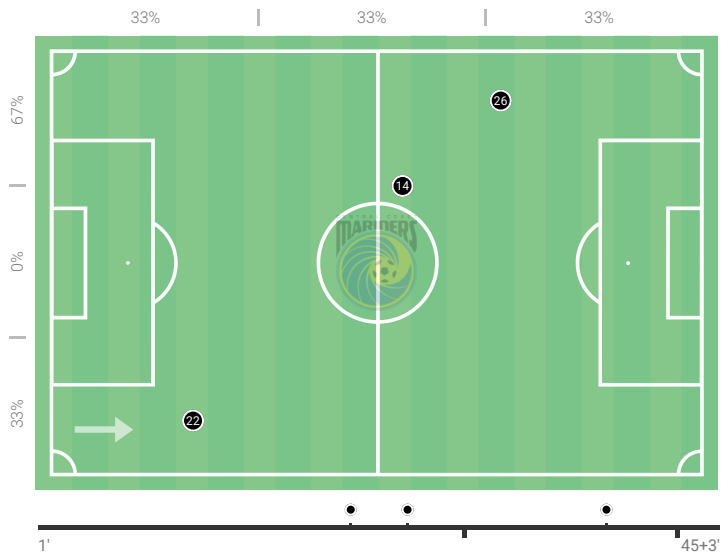


Central Coast Mariners

Player		Last 5 matches
26 I. Di Sipio	2	-
14 G. Kraszula	2	-
22 P. Trimis	1	-
16 T. Quilligan	1	-
Total	6	7.2

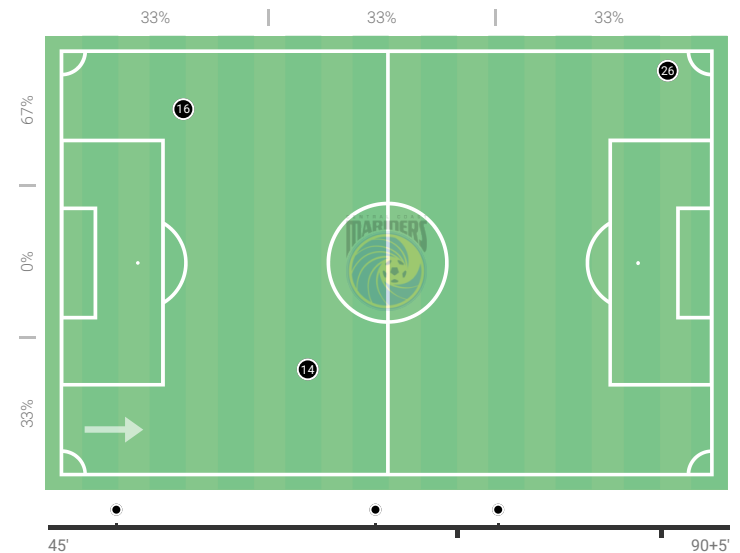
● Regular foul

1ST HALF



Player	R. Pollicina	Z. McMeeken	H. Furphy
26 I. Di Sipio	-	2/0	-
14 G. Kraszula	1/0	-	-
22 P. Trimis	1/0	-	-
16 T. Quilligan	-	-	1/0
Total	2/0	2/0	1/0

2ND HALF



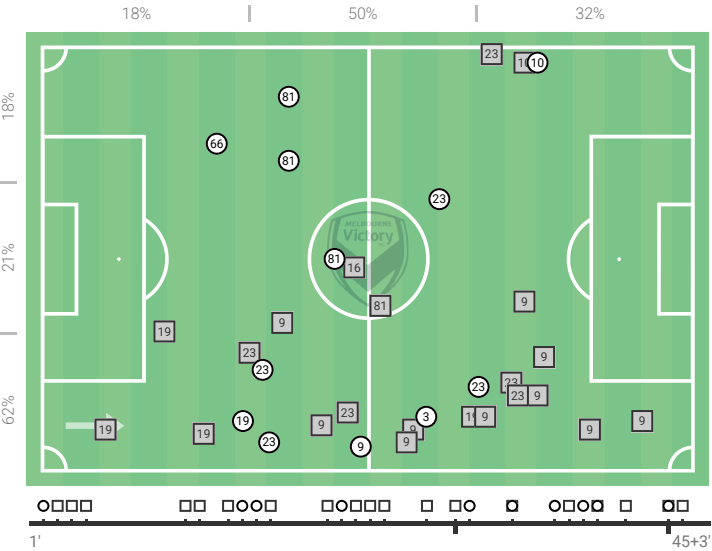


Melbourne Victory

Player				Last 5 matches	
9 H. Furphy	14/4	29%	-	-	-
23 R. Lowe	13/6	46%	-	-	-
19 Z. McMeeken	9/4	44%	-	-	-
5 S. Sakalis	6/4	67%	-	-	-
Total	59/29	49%	103.1	54%	

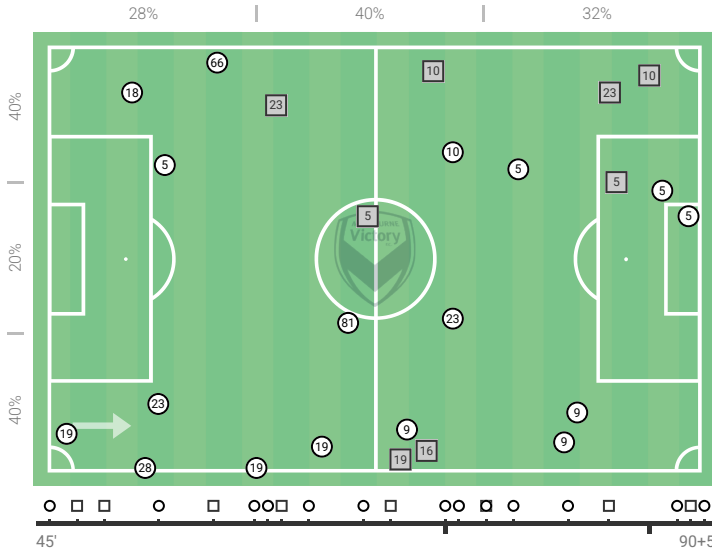
○ Successful □ Unsuccessful

1ST HALF



Player	I. Di Sipio	L. Baumann	G. Kraszula	P. Trimis
9 H. Furphy	2/0	7/1 14%	1/0	-
23 R. Lowe	2/1 50%	1/1 100%	4/2 50%	1/0
19 Z. McMeeken	7/3 43%	1/0	-	-
5 S. Sakalis	-	-	-	1/1 100%
Total	12/4	10/2	7/3	6/4

2ND HALF

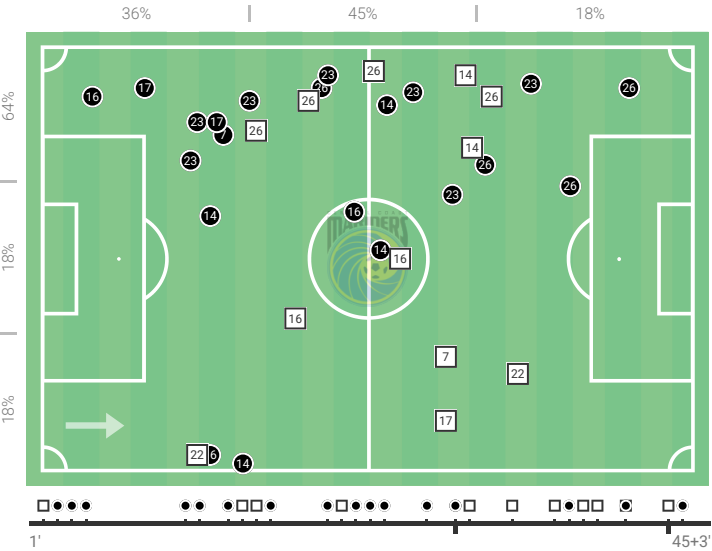


Central Coast Mariners

Player				Last 5 matches	
23 L. Baumann	12/8	67%	-	-	-
26 I. Di Sipio	12/5	42%	-	-	-
14 G. Kraszula	7/4	57%	-	-	-
16 T. Quilligan	6/3	50%	-	-	-
Total	60/30	50%	96.6	50%	

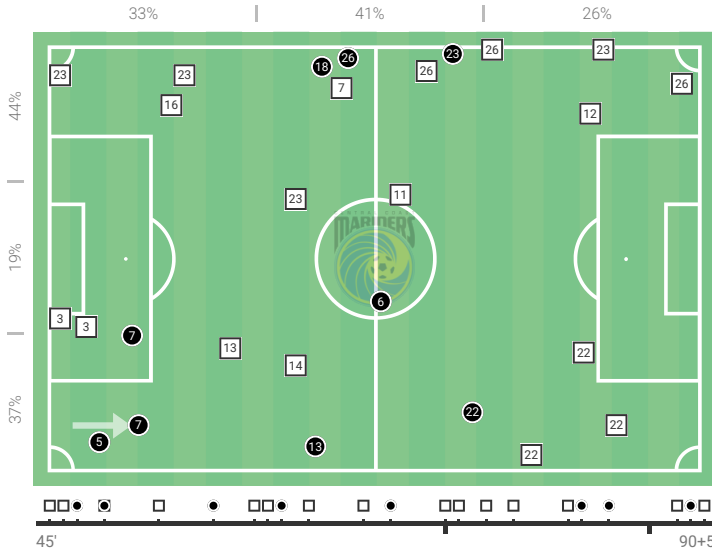
● Successful □ Unsuccessful

1ST HALF



Player	H. Furphy	R. Lowe	Z. McMeeken	S. Sakalis
23 L. Baumann	7/5 71%	1/0	1/1 100%	-
26 I. Di Sipio	2/1 50%	2/1 50%	7/3 43%	-
14 G. Kraszula	1/1 100%	4/2 50%	-	-
16 T. Quilligan	2/0	1/1 100%	-	-
Total	14/8	13/6	8/4	5/3

2ND HALF



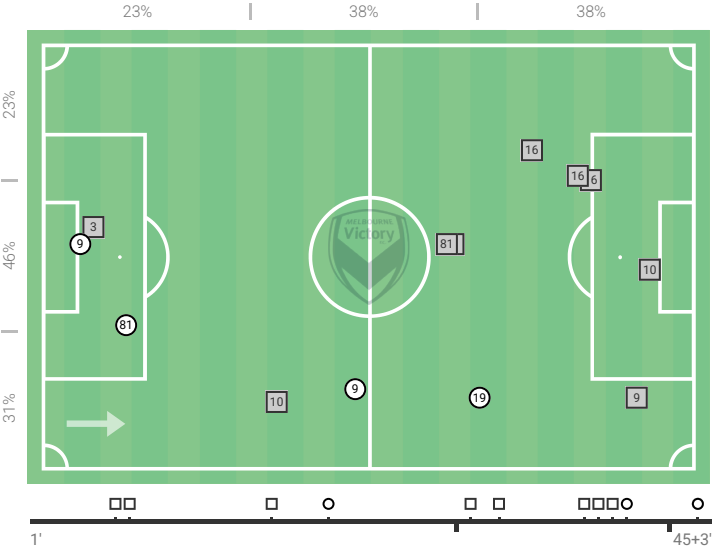


Melbourne Victory

Player			Last 5 matches	
16	K. White	5/0 0%	-	-
81	G. Maher	5/2 40%	-	-
9	H. Furphy	4/3 75%	-	-
10	R. Pollicina	3/1 33%	-	-
Total		23/9 39%	23.1	49%

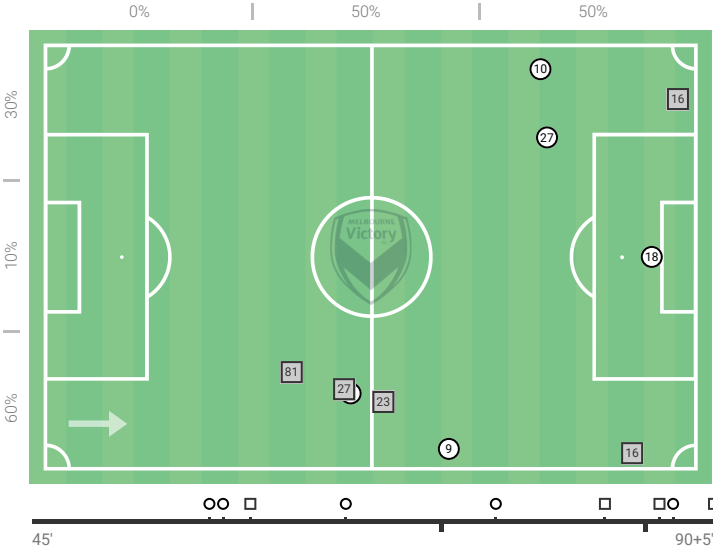
○ Successful □ Unsuccessful

1ST HALF



Player		I. Di Sipio	E. Barwick-Grey	L. Baumann	T. Levin
16	K. White	-	4/0	1/0	-
81	G. Maher	-	-	-	-
9	H. Furphy	1/1 100%	-	2/1 50%	-
10	R. Pollicina	1/0	-	-	-
Total		4/3	4/0	3/1	2/1

2ND HALF

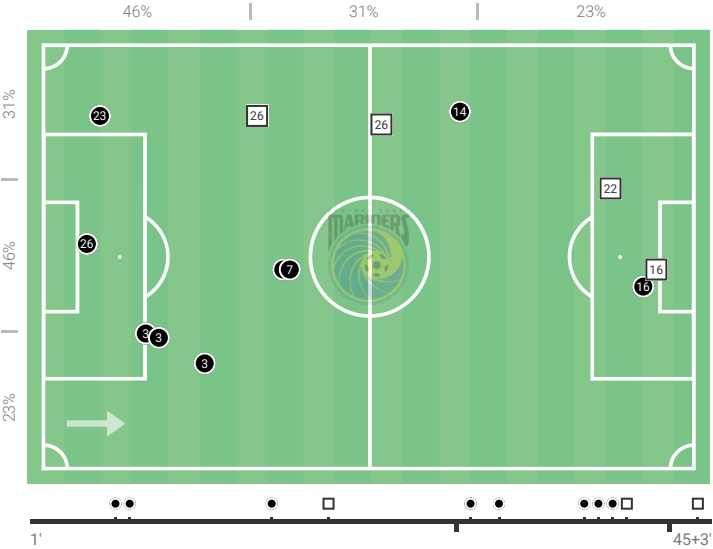


Central Coast Mariners

Player			Last 5 matches	
3	E. Barwick-Grey	4/4 100%	-	-
26	I. Di Sipio	4/1 25%	-	-
23	L. Baumann	3/2 67%	-	-
14	G. Kraszula	2/1 50%	-	-
Total		23/14 61%	22.5	47%

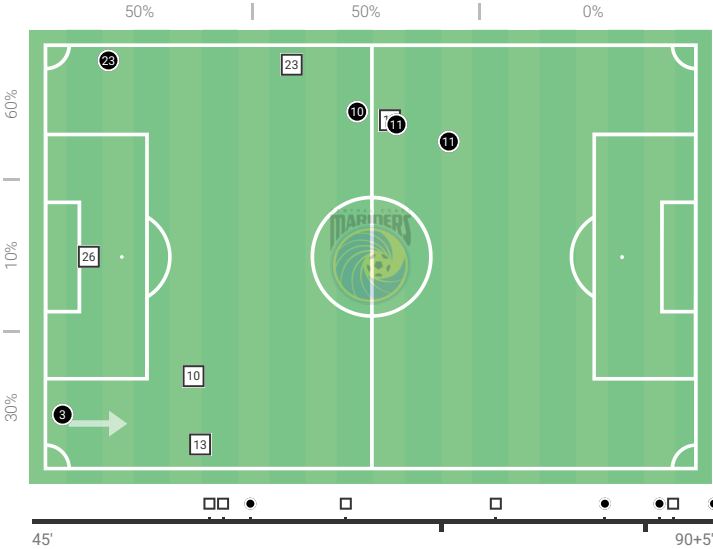
● Successful □ Unsuccessful

1ST HALF



Player		G. Maher	K. White	H. Furphy	R. Pollicina
3	E. Barwick-Grey	-	4/4 100%	-	-
26	I. Di Sipio	-	-	1/0	1/1 100%
23	L. Baumann	-	1/1 100%	2/1 50%	-
14	G. Kraszula	1/0	-	-	1/1 100%
Total		5/3	5/5	4/1	3/2

2ND HALF



AVERAGE POSITIONS

Players' positions are calculated as an average point of all actions where they touched the ball.

XG (EXPECTED GOALS)

A metric that assigns to every shot a probability (based on historical stats) of how likely it is to score from the position, type of assist, preceding events etc. A modern metric that allows to study the results of the matches with more stress on predictability of moments creation and less on pure luck.

FORWARD / BACK / LATERAL PASS

Passes are quantified in quadrants of 45°. The passes to the side of the field with the length more than 12 meters are considered lateral.

SMART PASS

A pass that develops the attack of the team in a creative way.

SECOND / THIRD ASSIST

A second assist is a pass that immediately leads to an assist. A third assist is a pass that leads to a second assist. Not every assist is guaranteed to have second/third assists to it.

PROGRESSIVE PASS

A pass that moves the ball considerably forward. The minimal requirement for a progressive path progression towards opponent goal is:

- 30 meters, if starting and finishing points there are in own half
- 15 meters, if starting and finishing points there are in other halves
- 10 meters, if starting and finishing points there are in opponent half

PASS TO FINAL THIRD

A pass to a zone within 35 meters from the opponent's goal line.

DEFENSIVE DUEL

A duel that happened when opponent team was in the possession of the ball.

OFFENSIVE DUEL

A duel that happened when the player was in the possession of the ball.

REFLEX SAVE

A goalkeeper save made with a reflexes move.

TRANSITION

Active change in the possession of the ball. Depending on what third of field it took place in, it's divided into Low, Medium and High.

ATTACK

A possession that includes at least one action in opponent's final third.

COUNTERATTACK

An attack that includes a quick transition, attempting to get advantage of the opponent being out of positions.

POSITIONAL ATTACK

Any open play (i.e., not from a set piece) attack that is not considered a Counterattack.

DEEP COMPLETION

A pass (excluding crosses) that was received in a 20-meter radius from the opponent goal line.

PPDA

Opponent passes per defensive action in opponent's final 60% of the pitch. A well-studied metric used to qualify pressing intensity.

MATCH TEMPO

Number of passes per minute of possession.