

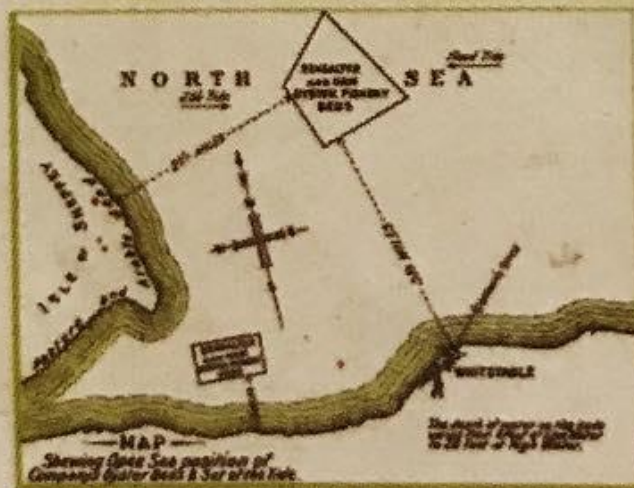
ASSG 2025
Kelsey Thompson
Aquaculture Director
Seasalter (Walney) Ltd
www.morecambabayoysters.co.uk



Piel Island and castle

WHITSTABLE NATIVE OYSTERS

TELEPHONE
No 3
WHITSTABLE



TELEGRAMS
SEASALTER
WHITSTABLE

SIX MEDALS



LONDON 1883.

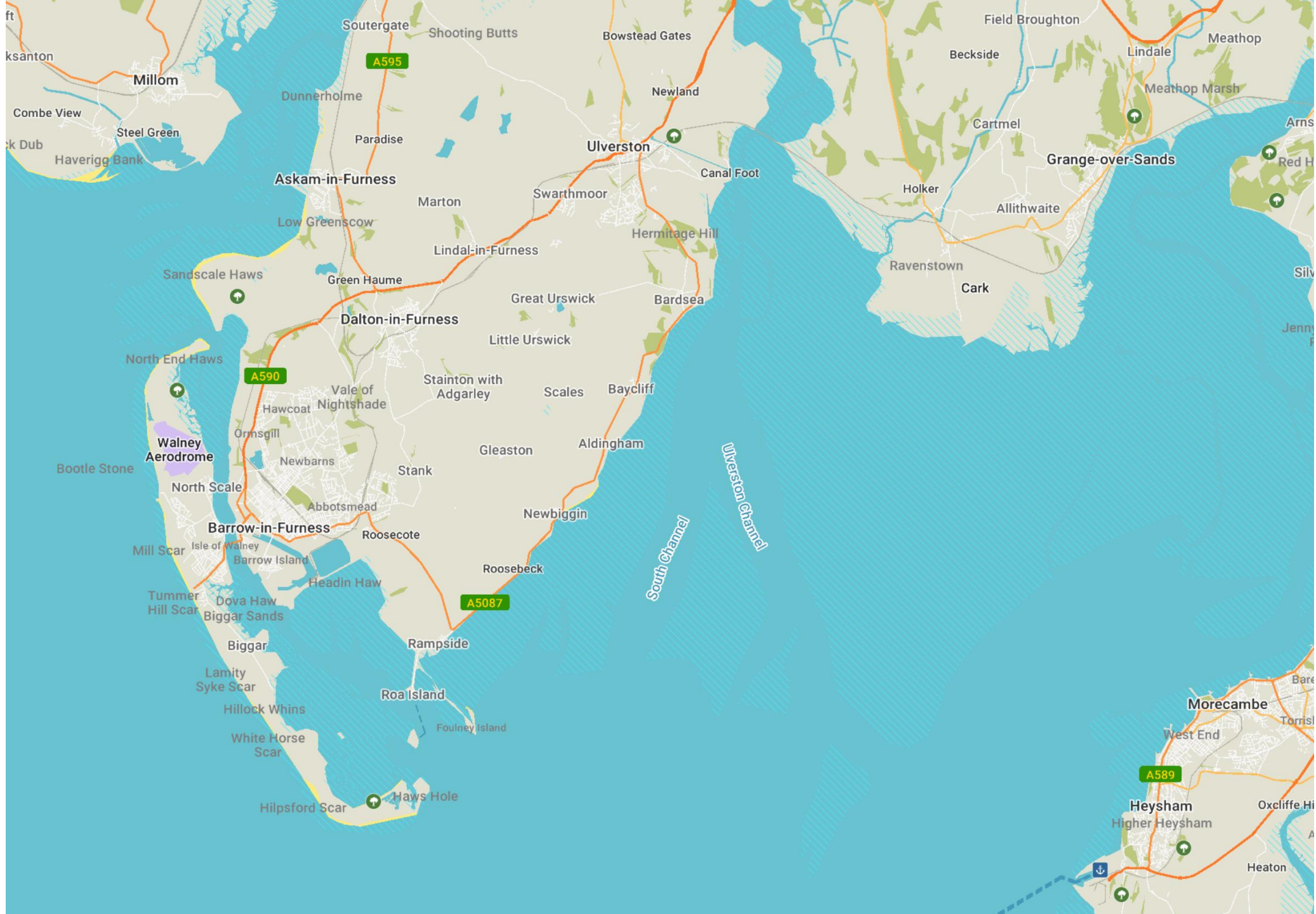
PRODUCED BY
THE SEASALTER & HAM OYSTER FISHERY CO. LTD, WHITSTABLE.

TELEPHONE-12735-CENTRAL. LONDON OFFICES-11 LOWER THAMES ST. E.C. TELEGRAMS-GANN-LONDON.

THE TRADE ONLY SUPPLIED.



MORECAMBE BAY
OYSTERS







South Walney Island lagoons
and shellfish hatchery/nursery





Continuous
flow algae unit



Broodstock
conditioning



Larvae room and tanks

Upwelling spat bottles



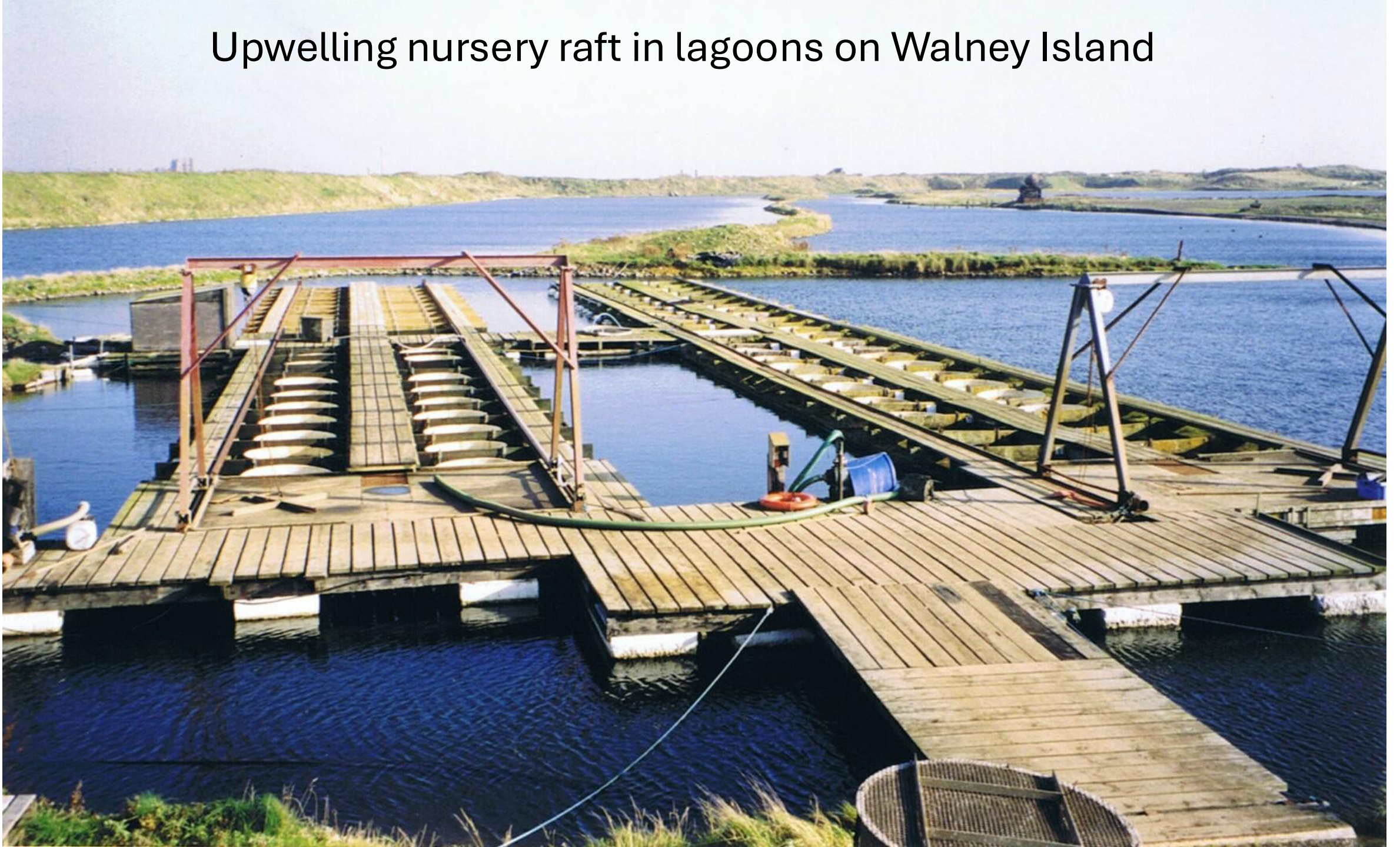


Indoor heated unit
with upwelling trays



Nursery tanks for small seed

Upwelling nursery raft in lagoons on Walney Island



TIME magazine extract...

Herpes Hits French Oyster Industry

3 MINUTE READ

BRUCE CRUMLEY / PARIS

AUGUST 7, 2008 12:00 AM EDT

Scientists have identified a form of herpes as the culprit in a widespread viral outbreak that has killed as many as 8 billion French oysters in recent weeks. Experts warn that the great oyster devastation of 2008 will result in a shortage in supplies of the shellfish over the next two years, and could push many people who cultivate and sell the creatures to financial ruin.



- After the OHV outbreak in France.
- Seed to France.
- Seed to Ireland paid for by the French.
- French seed to Ireland.
- OHV in Ireland.

Morecambe Bay oyster farm



- French farmers looking for new sites.
- French interest in MBO.
- Loch Fyne Oysters.
- Safeguard seed supplies to Scotland.
- Expand production of market size oysters in Morecambe Bay.



- Seed sales decline.
- Over 250 seed customers absorbing surplus.
- Increase in hatchery running costs.
- We try not to overproduce.
- Hatching issues or poor seasonal conditions before stock gets established.





- Coping with reduced income from seed sales.
- Market size oysters.
- Manila clam seed.
- Consultancy to aquaculture projects.
- Single seed native oysters, academia, research, charity or community money.
- Native oyster seed settled on reef blocks.



Manila clam broodstock



Bare reef blocks in a Netherlands warehouse



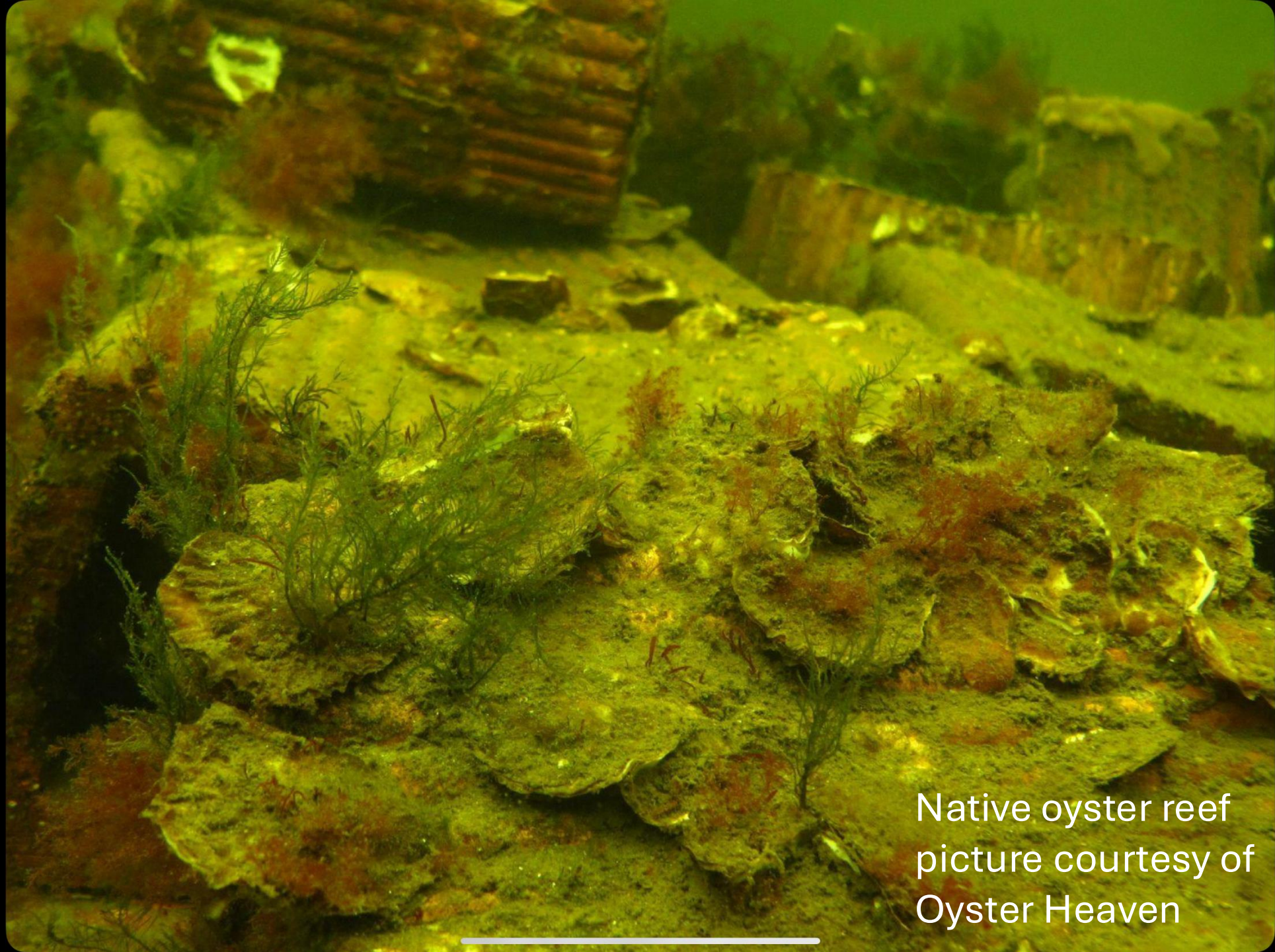
5.5m x 2m deep native oyster settlement tanks

Large tank with native oyster seed on reef blocks



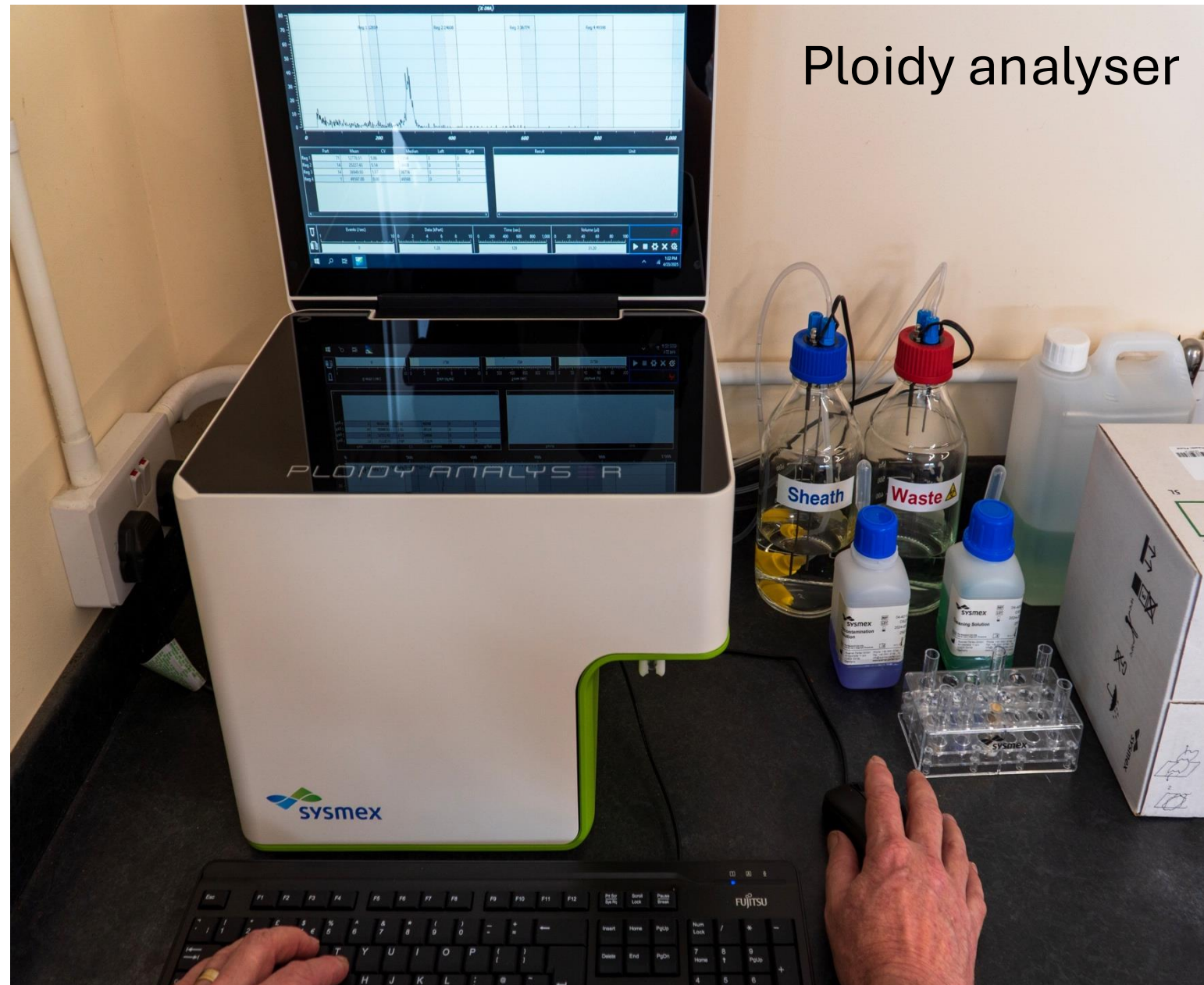


Native oysters
settled on blocks



Native oyster reef
picture courtesy of
Oyster Heaven

- Natural England's advice to DEFRA.
- 52 degrees latitude line.
- No new Pacific oyster farms.
- No expansion of existing farms and phase out diploids.
- Triploid breeding programme.
- Cawthron Institute NZ.



New hatchery autumn 2025





- Extensive infrastructure developments.
- Alterations and additions.
- Pacific oyster seed market lower than 20-30 years ago.
- Company is finding new sources of income.
- Try not to overproduce.

