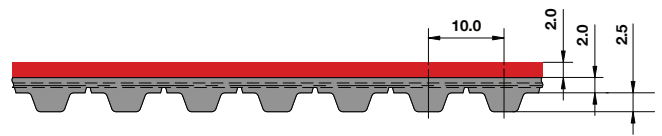
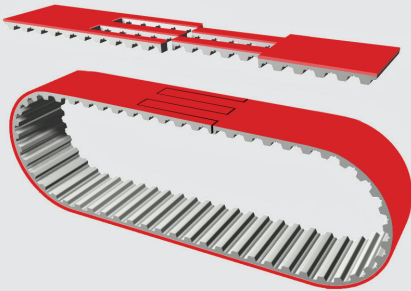


T10 TPEXclassic



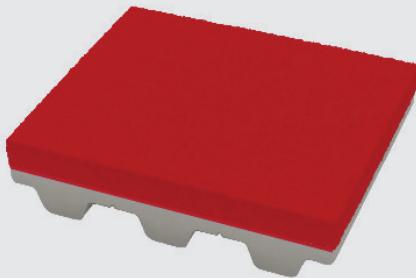
Spliced and Welded "V"



Specifications

Widths (mm) In between widths available	16	25	32	50	64	75	100
Min. Joined Length (mm) Increasing in one tooth increments	400						500
Admissible Tensile Force (N/10mm belt width)	440						
Minimum Pulley Diameter (mm)	60						

TPEXclassic Backing



Specifications

Standard thickness (mm)	2
Tolerance for Total Thickness	± 0.4mm (ground ±0.1mm) (timing belt + coating)
Coefficient of friction (aluminum)	0.70
Hardness	41 Shore A
Temperature Range	-40°F to 176°F (-40°C to 80°C)
Machinability	Grooves and slitting possible
Compliance	FDA (EU10/2011)

Resistances:

- Abrasion ●
- Water ●●●●
- Oil + Fat ●

STANDARD MATERIALS

Belt Material	Tension Members	Backing Material	Backing Application
TPU-CLA	STA-CLA 0.6	Thermoplastic Elastomer (TPE)	Extrusion



Ordering Example: TPEXclassic

[WIDTH] [PITCH] / [LENGTH] [CONSTRUCTION] [TPEX RED]
100 T10 CLA / 500 V TPEX RED