

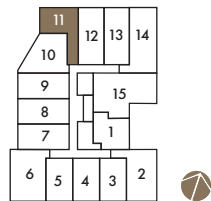


# The Paris

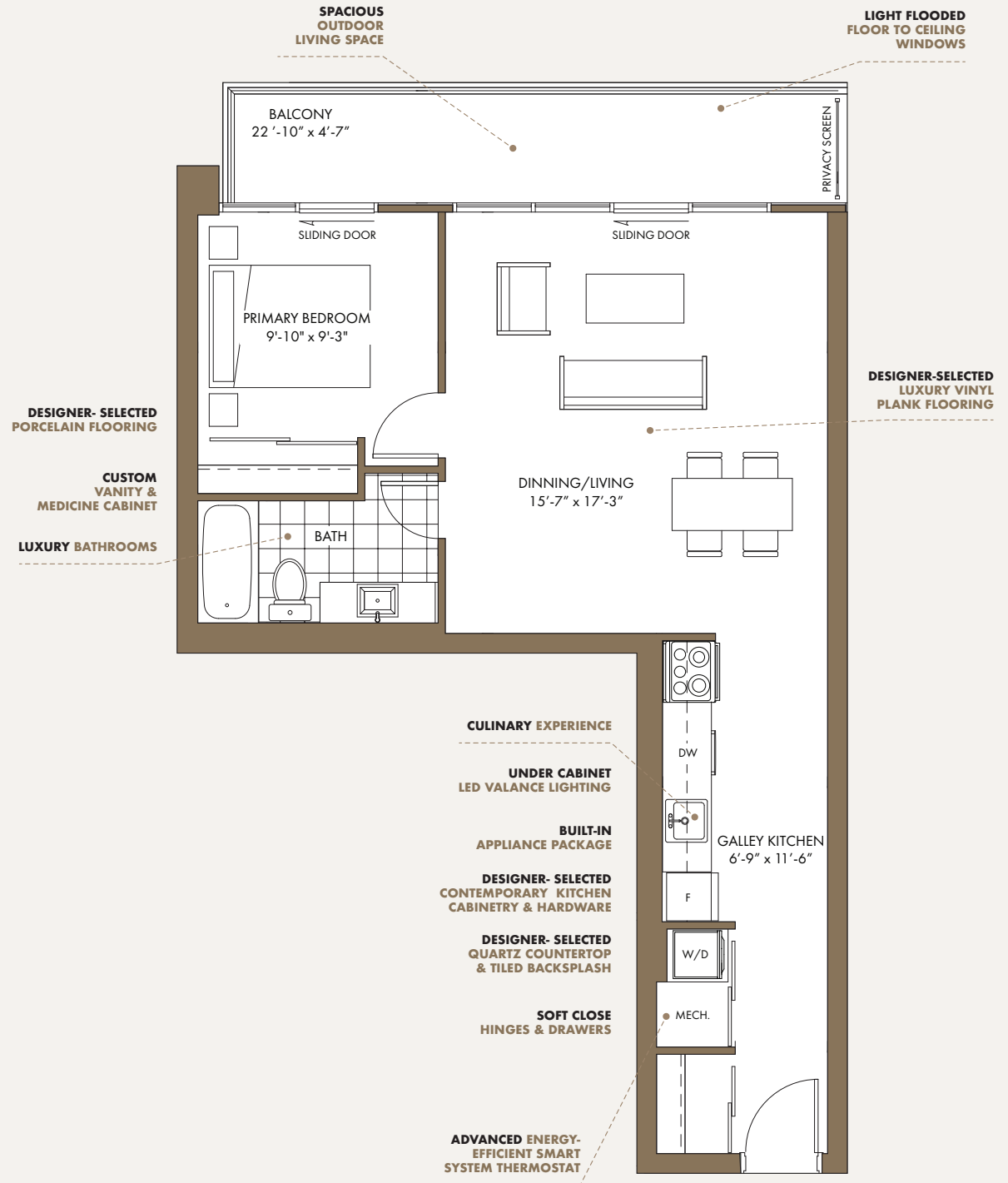
1 BEDROOM / 1 BATH

INDOOR LIVING 663 SQFT.  
OUTDOOR LIVING 114 SQFT.

## FLOOR PLATES



2nd - 6th Floor



All plans, dimensions and specifications are subject to change without notice. Actual usable floor space may vary from stated floor area. Column locations, window locations and size may vary and are subject to change without notice. Renderings are artist concept and will change if required by site conditions. Plans, specifications and materials are subject to availability, substitution, modification without notice at the sole discretion of Isroc International Inc. E. & O.E.

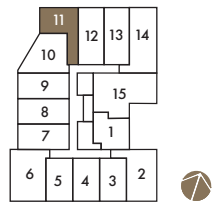


# The Paris

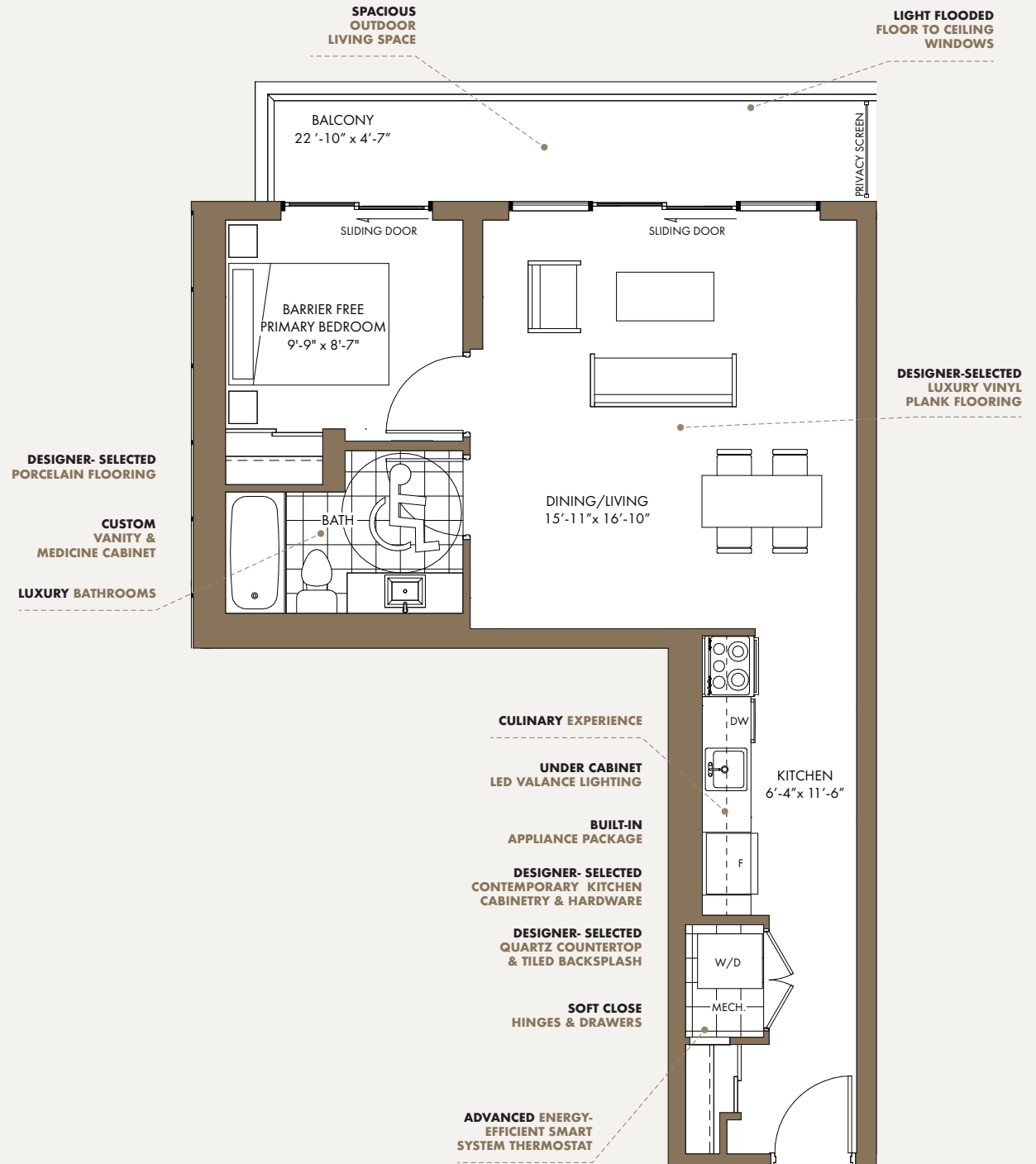
**BARRIER FREE  
1 BEDROOM / 1 BATH**

INDOOR LIVING 663 SQFT.  
OUTDOOR LIVING 114 SQFT.

## FLOOR PLATES



2nd - 6th Floor



All plans, dimensions and specifications are subject to change without notice. Actual usable floor space may vary from stated floor area. Column locations, window locations and size may vary and are subject to change without notice. Renderings are artist concept and will change if required by site conditions. Plans, specifications and materials are subject to availability, substitution, modification without notice at the sole discretion of Isroc International Inc. E. & O.E.