

AssetWatch Vibration Analysis



Spec Sheet

AssetWatch Vibration Analysis

- Triaxial accelerometer and temperature sensor
- Capable of multiple sensor readings per day
- Ability to invoke manual readings
- Ability to change sample size and frequency

VERO-VT-02 (WIRELESS SENSOR)



MECHANICAL SPECIFICATIONS

Sensor Module Height: 2.64" [67mm]
Sensor Module Diameter: 1.6" [42mm]
Sensor Module Weight: 5.8oz [165g]

Mounting Methods:

Magnet, epoxy, or threaded studs
Stud dimension: 1/4-28 UNF tapped hole
Ruggedized enclosures
Corrosion resistant
Aluminum-plated base

HARDWARE SPECIFICATIONS

Bluetooth Low Energy (2.4 GHz)
Battery 3.6V, Li-SOCl₂

Maximum output power

6.3mW (8dBm)

SENSOR DATA

Triaxial Accelerometer

Mechanical response: 8.2kHz (x), 8.5kHz (y), 5.6kHz (z)
Measurements up to +/-64g, 16-bit @ 25.6kHz sample rate
Fmax: 12.5Hz - 12.8kHz

Lines of Resolution 256-8192 (4096 default)

Bin Width Range: 0.049 - 3.125 Hz

Temperature Sensor

Measurement Range: -40°C to +125°C (-40°F to +257°F)

Accuracy of +/- 1°C

ENVIRONMENTAL AND REGULATORY

Ingress protection (IP68)

Temperature Operation: -40°C to +85°C (-40°F to +185°F)

FCC Part 15 • CE • RoHS Compliant

VERO-HB-02 (HUB)

MECHANICAL SPECIFICATIONS

Hub Height: 1.23" [31mm]
Hub Width: 3.34" [85mm]
Hub Depth: 3.34" [85mm]
Hub Weight: 4oz [113g]

HARDWARE SPECIFICATIONS

Wi-Fi Available
(LTE Hotspotting available)
Hardware for PLC integration
Hardware for hardwired ethernet connection
Wi-Fi 4, operates at 2.4 GHz
WPA2 with AES encryption
Bluetooth Low Energy (2.4 GHz)
5 - 12VDC input (Hub)
Less than 1W nominal power draw

Maximum output power

6.3mW (8dBm) for BLE

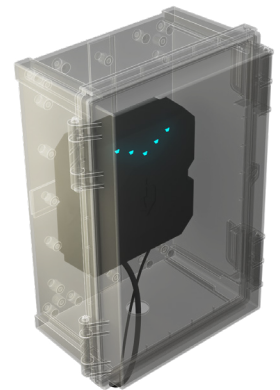
40mW (16dBm) for Wi-Fi

ENVIRONMENTAL AND REGULATORY

Ingress protection (IP65)

Temperature Operation: to -40°C to +70°C (-40°F to +158°F)

FCC Part 15 • CE • RoHS Compliant



- ✓ Hazardous Location Sensor available for C1D1, C1D2, C2D1, and C2D2 environments
- ✓ Hazardous Location Hub Enclosure available for C1D2 and C2D2 environments

