

ASTORIA

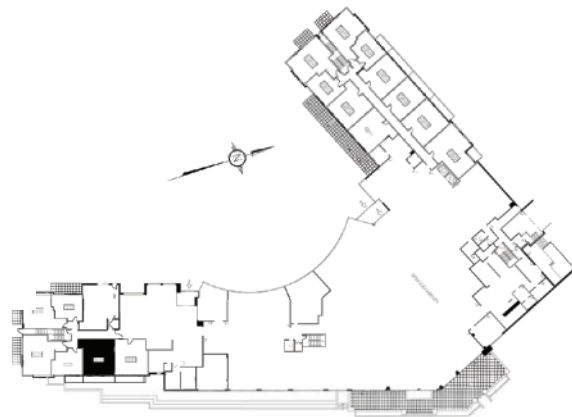
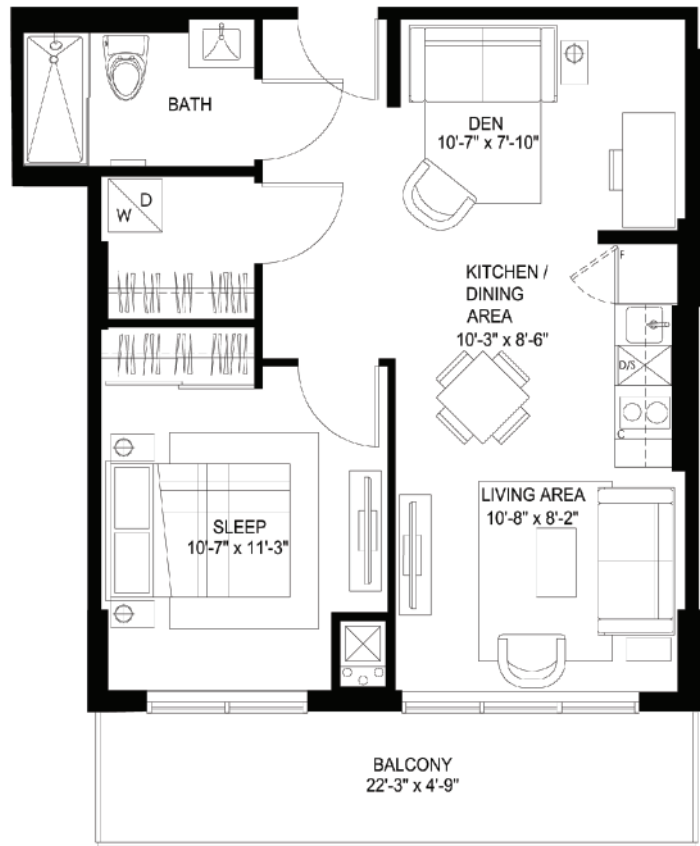
BY ALAVIDA LifeStyles

LILAC

1 BED + DEN

605 SQ FT UNIT

+ 115 SQ FT BALCONY = 720 SQ FT



GROUND FLOOR (GLASS PARTITIONS)

HELLOASTORIA.COM

613-688-5045

choo
communities

E. & O.E. Plans and specifications are subject to change without notice. March 2022