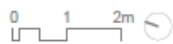


THIRD FLOOR - APART. 3C

**Unit AD - T2** (includes one private parking space)

Construction Area:  
**90.98 m<sup>2</sup> \***

|                                    |                      |                           |                      |
|------------------------------------|----------------------|---------------------------|----------------------|
| <b>01</b> Entrance Hall            | 14.70 m <sup>2</sup> | <b>05</b> Bedroom         | 11.05 m <sup>2</sup> |
| <b>02</b> Living Room/ Kitchenette | 19.90 m <sup>2</sup> | <b>06</b> Bedroom         | 16.40 m <sup>2</sup> |
| <b>03</b> Circulation              | 04.90 m <sup>2</sup> | <b>07</b> Bathroom        | 04.70 m <sup>2</sup> |
| <b>04</b> Bathroom                 | 02.90 m <sup>2</sup> | <b>08</b> Terrace/Balcony | 26.95 m <sup>2</sup> |

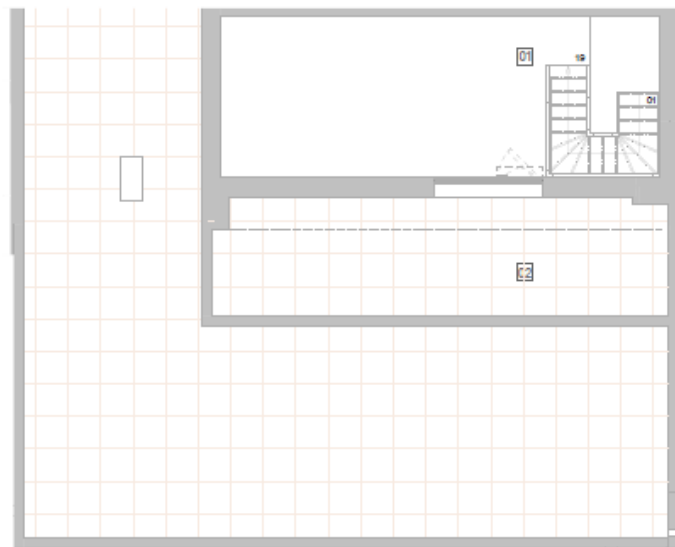


\*This area does not include balconies and/or terraces and it is subject to confirmation.

FOURTH FLOOR - APART. 3C  
**Unit AD - T2** (includes one private parking space)

Construction Area:  
**90.98 m<sup>2</sup> \***

|                           |                      |
|---------------------------|----------------------|
| <b>01</b> Rooftop Access  | 18.70 m <sup>2</sup> |
| <b>02</b> Rooftop Terrace | 18.30 m <sup>2</sup> |



\*This area does not include balconies and/or terraces and it is subject to confirmation.