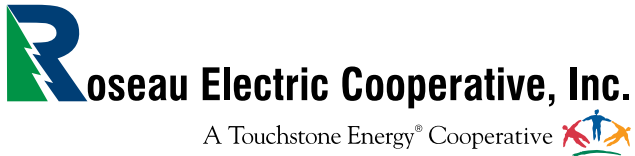


VOLTS & VIEWS

SEPTEMBER 2025



National Farm Safety and Health Week

September 22-27, 2025

Harvest can be very demanding for all the farmers and ranchers in the region. Your trusted electrical experts at Roseau Electric Cooperative want to make sure every member comes home every night with all their fingers and toes. Here are a few helpful tips to stay safe this harvest season:



Always use proper Personal Protective Equipment (PPE)
Gloves, work boots, safety glasses

Keep an up-to-date first aid kit on hand

Large bandages, large shears, eye wash, medication for allergic reactions



Perform regular maintenance on your equipment

Provide proper equipment training for everyone working



Avoid wearing loose clothing around equipment

VOLTS & VIEWS

SEPTEMBER 2025 – Vol. 70, No. 9

OFFICIAL PUBLICATION OF

Roseau Electric Cooperative, Inc.

1107 3rd Street N.E.

The Volts & Views (USPS-663420) is published monthly by Roseau Electric Cooperative, Inc., P.O. Box 100, Roseau, MN 56751. Periodicals postage paid at Roseau, MN. POSTMASTER: Send address changes to ROSEAU ELECTRIC COOPERATIVE, INC., P.O. Box 100, Roseau, MN 56751.

OFFICERS AND DIRECTORS

Chairman Mark Sax
Vice Chairman Brian Grafstrom
Secretary-Treasurer Mike Wahl
Directors Jim Christianson, Shawn Gust,
Kermit Jensen, Ron Storey,
Joe Tesarek, Bob Tuttle
Ryan Severson General Manager
Alex McMillin Assistant Manager
Mark Jennings Manager of Line Operations
Mary Preteau Editor

Regular Business Hours: 8 a.m. - 4:30 p.m.

Phone: 218-463-1543

OUTAGE CALLS:

Toll-Free: 1-888-847-8840

MINNESOTA STATE ELECTRICAL INSPECTORS

7 a.m. - 8:30 a.m. (Mon. thru Fri.)

Northwest Angle, Kittson, Marshall,
Pennington and Roseau counties
and parts of Beltrami County:
Ronald Ditsch – 651-368-2195

Lake of the Woods County:
Curt Collier – 218-966-5070

Inspector list is subject to change at any time.

The State of Minnesota has high wiring standards, which are in the best interest of you and your family or business. Improper wiring can damage your home, your property and equipment, and injure or kill the people you love. Currently, the state does allow homeowners to do their own residential wiring; however, it is critical that the current electrical code is followed. Any time you or an electrician does wiring or other electrical work at your home or farm, Minnesota state law requires a state wiring inspector to conduct a proper inspection of the work. A rough-in inspection must be made before any wiring is covered. A final inspection is also required. For more information visit dli.mn.gov and go to the electrical page.

Gopher State One Call
1-800-252-1166 or 811
www.gopherstateonecall.org



Anyone who plans to dig is required by law to notify the state of their intentions at least 48 hours in advance. All digging requires the 48-hour notification so that buried telephone line, television cable, pipelines, utility electrical lines, municipal water and sewer lines can be located to ensure that none will be severed or damaged.

OUR MISSION STATEMENT

Roseau Electric Cooperative is committed to providing its member-owners low-cost, high-quality, safe and reliable electricity with friendly, efficient and knowledgeable service.

This institution is an equal opportunity provider and employer.



WELCOME, CONNOR!

We are excited to announce that Connor Eidsmoe has been hired as a groundman and will begin his lineworker apprenticeship on Nov. 5. A Roseau native, Connor recently completed the two-year electrical lineworker program in Wadena, where he earned his associate's degree. Outside of work, Connor is an avid outdoorsman who enjoys hunting, fishing and spending time in nature. We are thrilled to have him join our team and look forward to seeing him grow in his role as he begins his apprenticeship.

CONGRATS TO GRYGLA FALL FESTIVAL WINNER

EVELYN WALING

\$100 gift card to Grygla Farmers Union Oil Co.



FROM THE LINE

MARK JENNINGS, *MANAGER OF LINE OPERATIONS*

When you are young, you think you are invincible and have all the time in the world. As you get older, you realize that every day is a gift and time waits for no one. The REC family lost two retired employees since I last wrote an article. Gale Olson and Roger Welin were both linemen for REC. Gale retired just before I started at REC. I got to know him through different REC functions. He always had a smile on his face and was up for a friendly conversation. I got to work with Roger a few years before he retired. I always wanted to sit near Roger during coffee breaks as he was the best storyteller. His laugh was contagious. Roger was a true gentle giant.

Even though the seasons are changing from summer to fall, the line department is still in underground construction season. As I write this, we have built 30 new services and have 12 more to finish. We have also revamped multiple services and power lines. If you still need a new service or to make any changes to your existing service in 2025, please contact us as soon as possible.

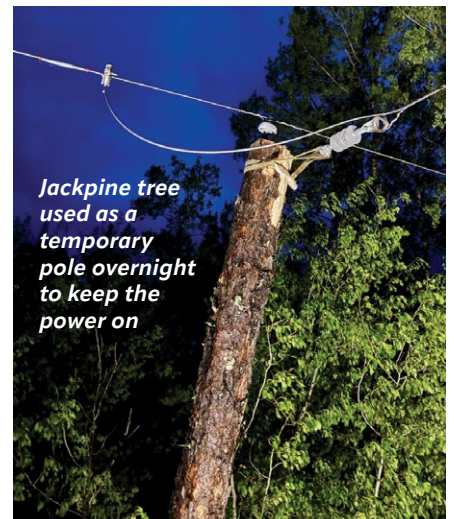
The summer storms seem to have been a little more active than prior years. There have been six days with multiple extended outages due to thunderstorms. We thank you for your patience and understanding during storms. REC linemen work around the clock to restore your power. We ask if your power goes out, please check your breakers, wait five minutes, and then call in the outage, even if it

is the middle of the night. We do not get notified of outages unless you call.

We will start mowing and cutting trees in and around overhead power lines again this fall and winter. REC needs to maintain proper right of way for the safety and reliability of electric service. Trees in and near power lines can cause power outages and wild-fires. REC will always maintain an aggressive approach to right-of-way management.

Good luck to those who are spending time in the woods this fall hunting. Please stay safe and be aware of your surroundings. Just this summer we had a riser pole near Grygla that was shot by a bullet. The bullet went into the primary underground wire causing an outage. Think back to firearms safety class and always know what is beyond your target when shooting.

I encourage everyone to take time and support our local youth this school year – whether that's attending sporting events and concerts or volunteering to coach or officiate. We all have busy schedules. Please make time to support our youth in any way you can. It's what makes Roseau Electric Cooperatives service territory a great place to live and raise a family.



Jackpine tree used as a temporary pole overnight to keep the power on



Journeyman Lineman Dillion Thompson participates in annual pole top bucket rescue training

HOWDY, NEIGHBOR!

Your electric co-op is local and run by people in your community.

Did you know that the people who keep Roseau Electric Cooperative running, including its employees and board of directors, are folks from your area? In fact, some of them may be your friends and neighbors! That's something that makes electric cooperatives different from investor-owned utilities (IOUs), whose bosses and board members are often hours away in big cities.



Your co-op is homegrown!

Roseau Electric Cooperative is headquartered in Roseau, and most of the people working here live in town or the surrounding communities. They care about keeping service reliable and affordable for members, because they're members, too.

The same can be said of our board of directors, whose members live in the different districts of

our service territory. Each director is elected by fellow members who live in their district, so chances are high that you personally know your board representation!

All big decisions made by the staff of the co-op also go through the board of directors, who are there to voice the needs of your district. That's not possible with a board for an IOU, which speaks for shareholders instead of the electric consumers in their community.

In fact, board directors are elected every three years in each co-op district, so if you want to be a part of guiding your local co-op, you could run for a seat – if you meet the eligibility criteria, that is.

However you prefer to be involved with your cooperative, remember – your co-op is run with democratic member control, and your voice (and the voices of your friends and neighbors) is important!

Recognize anyone on this list? They're the neighbors on your board of directors!

- | | | |
|-------------------|--------------------|---------------|
| ▶ Mark Sax | ▶ Jim Christianson | ▶ Ron Storey |
| ▶ Brian Grafstrom | ▶ Shawn Gust | ▶ Joe Tesarek |
| ▶ Mike Wahl | ▶ Kermit Jensen | ▶ Bob Tuttle |

ONE BIG BEAUTIFUL BILL TO RESHAPE AMERICAN ENERGY POLICY

Electric cooperative advocacy delivers results in fast-changing legislative environment

In a legislative environment where many energy incentives were rolled back or eliminated, Roseau Electric Cooperative and cooperatives across the nation stood strong and saw results. Thanks to consistent and collective advocacy, the One Big Beautiful Bill Act (OBBBA), signed into law on July 4, preserved key provisions that ensure co-ops remain on equal footing with investor-owned utilities in the nation's evolving energy landscape.

Among the notable victories, electric cooperatives successfully retained access to elective-pay energy tax credits and the ability to transfer those credits – two vital provisions that level the playing field between not-for-profit co-ops and investor-owned utilities. These tools, first introduced in recent years, allow co-ops to benefit directly from federal energy incentives without needing a tax liability, making it possible to pursue projects that were previously out of reach.

While the bill did accelerate the phaseout of wind and solar tax credits and eliminated federal incentives for electric vehicles, cooperative advocacy helped preserve core opportunities and helped avoid major challenges.

Wind and solar tax credit phaseout

One of the most impactful changes under the new law is the accelerated phaseout of tax credits for wind and solar projects. To qualify for the credits, projects must now be placed in service by Dec. 31, 2027 or begin construction within 12 months of the bill's passage.

Just days after the bill's signing, the White House issued an executive order directing the Treasury Department to tighten the definition of "start of construction," signaling that only projects with a substantial portion already built may qualify for credits.

The legislation also imposes stricter domestic content requirements and penalties for using materials linked to foreign entities of concern, which creates some complexity in project planning and supply chains.

While wind and solar face compressed timelines and stricter conditions, other energy technologies fared better. Battery storage, geothermal and nuclear projects retain full tax credit eligibility into the 2030s.

Maintaining carbon capture as an option

Where OBBBA reduces support for renewables, it expands some incentives for carbon capture, utilization and storage (CCUS). Minnkota, Roseau Electric Cooperative's wholesale power provider, is a national leader in CCUS through Project Tundra, which proposes to retrofit the coal-based Milton R. Young Station with carbon capture technology.

Under the updated 45Q tax credit, the law now offers equal incentives for both enhanced oil recovery (EOR) and geologic sequestration. This bolsters financial support options for CCUS, which can help ensure reliable baseload power plants can operate in a carbon-managed future.

EV incentives eliminated

One of the most visible changes for consumers under OBBBA is the elimination of federal electric vehicle (EV) tax credits. The move marks a significant policy shift away from government-supported EV adoption and places more emphasis on market-driven growth.

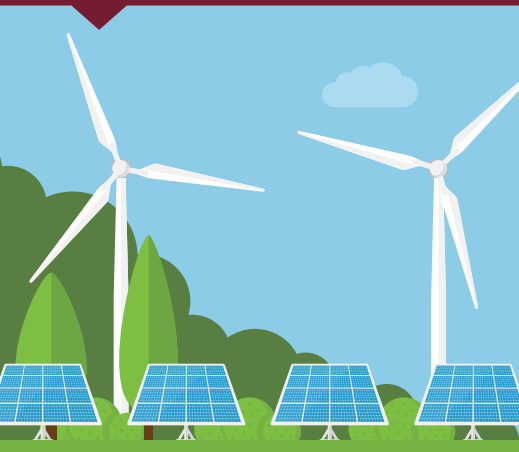
Industry analysts expect the change to slow the pace of EV adoption, particularly among first-time buyers and in regions where upfront cost remains a primary barrier.

Looking ahead

Federal energy policy continues to swing dramatically with each administration, creating challenges for utilities planning infrastructure and investments with 30- to 50-year horizons.

Roseau Electric Cooperative emphasizes that stable, bipartisan energy policy is essential to providing the certainty needed for long-term resource planning. Through continued advocacy work, electric cooperatives are engaging with federal leaders to ensure their priorities are reflected in all future decisions.

NOTICE TO COGENERATORS



In compliance with Roseau Electric Cooperative, Inc., adopted rules relating to cogeneration and small power production, Roseau Electric Cooperative, Inc., is obligated to interconnect with and purchase electricity from cogenerators and small power producers who satisfy the conditions as a qualifying facility. Roseau Electric Cooperative, Inc., is obligated to provide information free of charge to all interested members upon request regarding rates and interconnection requirements. All interconnections require an application and approval to become a qualifying facility. Any dispute over interconnections, sales and purchases are subject to resolution by the Roseau Electric Cooperative, Inc. board. Interested members should contact Roseau Electric Cooperative, Inc., P.O. Box 100, Roseau, MN 56751 or call 218-463-1543.

COLD WEATHER RULE

In accordance with Minnesota's Cold Weather Rule (216B.097), electric service cannot be disconnected for nonpayment between **Oct. 1 and April 30** if electricity is the primary heat source and all of the following statements apply:

- Your household income is at or below 50% of the state median household income. Income may be verified on forms provided by Roseau Electric Cooperative or by the local energy assistance provider (see providers below).
- You enter into and make reasonable and timely payments under a payment agreement that considers the financial resources of the household.
- You receive referrals to energy assistance, weatherization, conservation or other programs likely to reduce your energy bills from Roseau Electric Cooperative.

Please note that the Cold Weather Rule does not completely stop winter disconnects.

Before disconnecting electric service to residential members between Oct. 1 and April 30, Roseau Electric Cooperative must provide:

- A 30-day mailed notice or 15-day hand delivered notice
- A statement of members' rights and responsibilities
- A list of local energy assistance providers
- Forms to request Cold Weather Rule protection
- A statement explaining available payment plans and other options to continue service

ENERGY ASSISTANCE PROGRAM

This program is federally funded and can help low-income renters and homeowners pay for home heating costs and furnace repairs. Household income must be at 50% of the state median income to qualify for benefits.

To learn more about the EAP program or to apply, visit the MN Dept. of Commerce Energy Assistance website at <https://mn.gov/commerce/consumers/consumer-assistance/energy-assistance> for more details and to access the application portal. Or simply contact your county's EAP service provider.

Roseau Electric Cooperative exists because of you, and we are dedicated to the people and communities we serve. If you are having difficulty paying your electric bill and do not qualify for either of these programs, please contact us immediately to work out a mutually agreeable payment plan.

LOCAL ENERGY ASSISTANCE PROVIDERS

Northwest Community Action
PO Box 67
Badger, MN 56714-0067
(218) 528-3258 or 800-568-5329
nwcaa.org

Bi-County Cap, Inc.
6603 Bemidji Ave. N
Bemidji, MN 56601-8669
(218) 751-4631

Did you know?



\$ FOR A MONTH OF ELECTRICITY = \$ FOR A NEW BACK-TO-SCHOOL WARDROBE



*comparison based on average household energy usage

member connection

ENERGY TIP

Take advantage of "shoulder months," which refer to the transitional periods between peak heating and cooling seasons. During the fall, these milder weeks typically occur between September and November. Shoulder months offer a great opportunity to reduce home energy consumption as the need for extensive heating or cooling is reduced. Look for simple ways to boost indoor comfort without running your heating and cooling system. Use ceiling fans and open windows on breezy days to ventilate your home. On cooler days, add a layer of clothing and avoid running the heat.

DATES TO REMEMBER

September 21

Electric bill due

October 14

Co-op Appreciation Day

OFFICE HOURS

Monday – Friday

8 a.m. – 4:30 p.m.

Phone: 218-463-1543

AFTER HOURS/OUTAGE NUMBER

Toll-Free: 1-888-847-8840

(main outage call center)

CALL BEFORE YOU DIG

1-800-252-1166 or 811

PAY BY PHONE

1-877-999-3412

SMARTHUB

<https://roseauelectric.smarthub.coop/>

WEBSITE

roseauelectric.coop



**LIKE US ON FACEBOOK
TO STAY UP TO DATE!**

@RoseauElectricCooperativeInc

YOU HAVE THE POWER TO:

- View daily and monthly energy use.
- View and pay your bills online.
- Go paperless and receive an email notice when your bill is ready to view.
- Compare energy use to changes in temperature.



Sign up for SmartHub: roseauelectric.coop

OPERATING STATISTICS

	Monthly		Year to Date	
	July 2024	July 2025	July 2024	July 2025
Members	6,715	6,726	6,715	6,726
kWh purchased	10,314,369	9,898,170	86,376,972	88,090,932
% change		-4.04%		1.98%
Revenue	1,448,185	1,529,633	10,924,141	11,717,703
Cost of power	843,182	884,632	6,560,304	6,893,177
Other expenses	604,919	576,104	4,333,158	4,103,059
Operating margins	84	68,897	30,679	721,467
Non-operating margins	27,205	2,304	85,595	67,885
Patronage dividends	-	(115)	133,090	136,918
Total margins	27,289	71,086	249,364	926,269

C E L E B R A T E

CO-OP APPRECIATION DAY

Tuesday, October 14



**SERVING LUNCH
FROM 11 A.M. TO 2 P.M.**

*Please join us for
turkey on a bun, beans,
chips & cookies.*

*Sign up for prizes and
enjoy visiting with
your co-op friends
and neighbors!*