


JULY 2026

VOLTS & VIEWS

Roseau Electric Cooperative, Inc.
A Touchstone Energy® Cooperative 

NORTHSTREAM 
Powered by Roseau Electric Cooperative **FIBER**

Roseau County Fair

Stop by our booth starting the evening of July 21.

JULY 19-24

Visit our booth and register for a chance to win gift certificates from businesses throughout our service territory.

EVENTS:



Kids' trivia challenge
(chance to win a scooter!)

Kids' ping pong ball drop
July 23 - 5:00 p.m.
Outside of fair booth
(chance to win fair prizes)

Special appearances from LED Lucy and Solar Sam

Safety presentations by Minnkota Power Cooperative

Thursday, July 23 - Outside of fair booth - 1:30 • 2:00 • 2:30 • 3:00 • 3:30

The first 25 kids at each safety presentation will receive a coupon for a free ice cream cone at the 4H stand!

roseaucountyfair.com

VOLTS & VIEWS

JULY 2026 – Vol. 71, No. 7

OFFICIAL PUBLICATION OF
Roseau Electric Cooperative, Inc.
1107 3rd Street N.E.

The Volts & Views (USPS-663420) is published monthly by Roseau Electric Cooperative, Inc., P.O. Box 100, Roseau, MN 56751. Periodicals postage paid at Roseau, MN. POSTMASTER: Send address changes to ROSEAU ELECTRIC COOPERATIVE, INC., P.O. Box 100, Roseau, MN 56751.

OFFICERS AND DIRECTORS

Chairman Mark Sax
Vice Chairman Brian Grafstrom
Secretary-Treasurer Mike Wahl
Directors Jim Christianson, Shawn Gust,
Kermit Jensen, Ron Storey,
Joe Tesarek, Bob Tuttle

Ryan Severson General Manager
Alex McMillin Assistant Manager
Mark Jennings Manager of Line Operations
Mary Preteau Member Service Director
Madison Strand Finance Manager

Regular Business Hours: 8 a.m. - 4:30 p.m.
Phone: 218-463-1543
OUTAGE CALLS:
Toll-Free: 1-888-847-8840

MINNESOTA STATE ELECTRICAL INSPECTORS

7 a.m. - 8:30 a.m. (Mon. thru Fri.)

Northwest Angle, Kittson, Marshall,
Pennington and Roseau counties
and parts of Beltrami County:
Ronald Ditsch – 651-368-2195

Lake of the Woods County:
Curt Collier – 218-966-5070

Inspector list is subject to change at any time.

The State of Minnesota has high wiring standards, which are in the best interest of you and your family or business. Improper wiring can damage your home, your property and equipment, and injure or kill the people you love. Currently, the state does allow homeowners to do their own residential wiring; however, it is critical that the current electrical code is followed. Any time you or an electrician does wiring or other electrical work at your home or farm, Minnesota state law requires a state wiring inspector to conduct a proper inspection of the work. A rough-in inspection must be made before any wiring is covered. A final inspection is also required. For more information visit dli.mn.gov and go to the electrical page.

Gopher State One Call
1-800-252-1166 or 811
www.gopherstateonecall.org



Anyone who plans to dig is required by law to notify the state of their intentions at least 48 hours in advance. All digging requires the 48-hour notification so that buried telephone line, television cable, pipelines, utility electrical lines, municipal water and sewer lines can be located to ensure that none will be severed or damaged.

OUR MISSION STATEMENT

Roseau Electric Cooperative is committed to providing its member-owners low-cost, high-quality, safe and reliable electricity with friendly, efficient and knowledgeable service.

This institution is an equal opportunity provider and employer.

MINNKOTA TRANSMISSION LINE INSPECTIONS SCHEDULED FOR FALL

Minnkota Power Cooperative, Roseau Electric Cooperative's wholesale power provider, will be inspecting its transmission line structures in preparation for upcoming project work. EXO, a contractor, will be assisting Minnkota personnel in the pole testing. All inspections will be completed using ATVs/UTVs. Minimal land disturbance is anticipated.

The purpose of these inspections is to ensure that electricity can be delivered safely and reliably to your area, as well as prioritize project work. If you have questions, please visit minnkota.com or call **701-795-4000**.



For **6 cents**, you can spend the morning using warm water and soapy suds to clean your vehicle in the driveway.

For less than **1 cent** more, you can enjoy a cool cup of lemonade when you're done.

THAT'S THE VALUE OF ELECTRICITY

*Based on average household energy usage

AT THE CAPITOL: WORKING TO KEEP YOUR POWER AFFORDABLE AND RELIABLE

The 2026 Minnesota legislative session has wrapped up at the Capitol, and there's plenty for cooperative member-owners to know about how the session affected the energy that powers your home, farm or business.

It was a session shaped by divided government. With a tied House, a one-seat Senate majority and an election looming in November, every bill needed bipartisan agreement to move. Even so, Minnesota's electric cooperatives made important progress on the issues that matter most to member-owners. The session delivered a meaningful step forward on nuclear energy and stopped several costly proposals before they could become law.

A step forward on nuclear energy

After three decades of standing still, Minnesota took its first real step forward on nuclear energy.

Lawmakers approved a state nuclear energy study, the most significant movement on the issue since Minnesota's nuclear moratorium was put in place in 1994. The moratorium itself remains on the books, but the study reflects a growing recognition at the Capitol that nuclear power deserves a serious look as the state works toward its carbon-free electricity goals.

The study itself will examine the costs, benefits and tradeoffs of nuclear energy in Minnesota, including its potential role in supporting affordability, reliability and emissions reductions. Its findings will give lawmakers a stronger foundation for deciding whether to lift the moratorium next year.

Holding the line on costly new mandates

Just as important as what passed is what didn't.

Several proposals introduced this session would have added new costs, new mandates or new layers of regulation onto Minnesota's electric cooperatives. None of them became law, and that outcome wasn't an accident.

Throughout the session, Minnesota's electric cooperatives worked to educate legislators about how mandates from

St. Paul affect locally governed, not-for-profit cooperatives differently than they do large investor-owned utilities. Bills touching on solar policy, affordability mandates and utility operations all stalled before reaching the finish line. Cooperative priorities like net metering reform also saw little movement, leaving important work for future sessions.

That distinction matters because cooperatives are governed by the members they serve. Decisions about your electricity are made by neighbors you can talk to, not regulators in St. Paul. One-size-fits-all mandates often raise costs, undermine that local democracy and add bureaucracy without delivering real benefits to member-owners. Stopping bad policy rarely makes headlines, but it remains critically important to the members we serve.

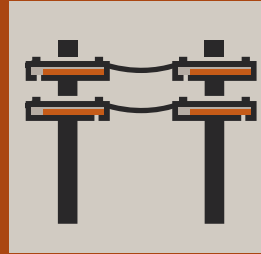


LEARN BEFORE YOU BURN

There are many benefits to rural controlled burns (also called prescribed burns), from managing crop debris to protecting the soil from disease. However, these burns present real wildfire and electrical risks if handled carelessly. Before you plan a burn, make sure you understand these foundational safety guidelines.



FIRST, WATCH THE WIRES – NEVER BURN NEAR POWER LINES.



Heat, smoke and flames can damage power lines or cause electrical arcing. Smoke can also reduce air insulation and increase the risk of electrical discharge through the air. And if a power pole catches fire, it can continue to burn inside even if the fire looks like it has stopped. Keep a safe distance and notify the co-op if a burn is planned nearby.

KNOW THE SPECIFIC WEATHER AND WIND CONDITIONS.



Burns should only happen under specific conditions: light winds, moderate humidity and no extreme heat. Our region has open landscapes that allow wind to pick up and shift unpredictably. Even a “moderate” 10-15 mph wind can push a grass fire faster than a person can run. If it feels breezy, it’s probably too risky to burn.

GET A PERMIT AND FOLLOW LOCAL REGULATIONS.



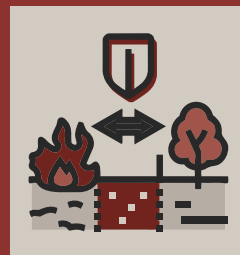
In Minnesota, permits are typically required through the Minnesota Department of Natural Resources, and burning is often restricted during spring wildfire season when grasses are dry. In North Dakota, local fire departments or county officials usually issue permission, and burn bans are common during high winds or drought. Always check daily restrictions.

HAVE SUPPRESSION TOOLS AND A PLAN READY.



Water sources, hoses, shovels and even tractors should be on hand before starting. More importantly, there needs to be a clear plan for what to do if the fire escapes, including who calls emergency services and how people will respond quickly.

REMEMBER TO PLAN FIREBREAKS BEFORE YOU BURN.



The dominant fuels in North Dakota and Minnesota field burns are grasses and crop residue, which ignite easily and spread fast. Before you burn, create wide, well-maintained firebreaks, like disked soil or wet lines.



DATA CENTERS & ELECTRIC RATES

Although Roseau Electric Cooperative doesn't currently serve a large-scale data center, we wanted to take a moment to dispel some myths about what data centers mean for local electric bills.

MYTH

"DATA CENTERS WILL DRIVE UP MY ELECTRICITY COSTS."

REALITY

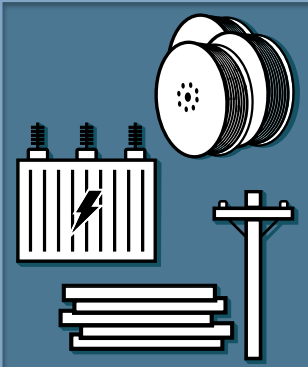
DATA CENTERS CAN ACTUALLY HELP KEEP ELECTRIC RATES STABLE.

HERE'S WHAT'S HAPPENING:

1

Most of your electric bill is made up of "fixed costs"

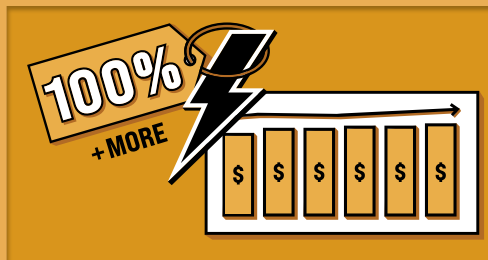
When you pay your electric bill, you're not just paying for the power flowing into your home or business. You're also paying for the power plants, poles, wires, substations and other infrastructure that make the generation and delivery of that power possible. These are long-term investments, known as "fixed costs," that get paid for over decades, much like a mortgage. Every electric consumer contributes to those costs.



2

Large electric consumers help cover these fixed costs

When a large customer – like a data center – connects to our system, they pay 100% of the new equipment they require (so others are not covering their upgrades). They also chip in heavily toward the existing system's fixed costs. That means the more they pay into the system, the less pressure there is on regular consumers. Their contributions can help keep rates stable and lessen the need for future increases.

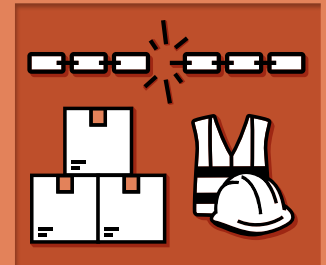


3

Rates may still go up for other reasons

Does this mean rates never go up again? **No.**

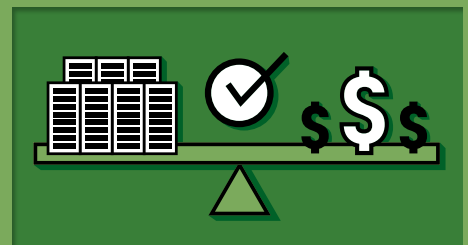
Factors like supply chain challenges, inflation and rising costs of labor and materials are pushing expenses higher across the entire industry. But the key is that data centers help limit the impacts. Without their contributions, those increases could be even steeper for everyone else.



4

Takeaway

With the right partnerships and structures, data centers aren't placing undue pressure on electric rates. By paying their fair share, they're helping stabilize costs for all of us.



ROSEAU ELECTRIC IS EXCITED TO WELCOME OUR SUMMER HELP



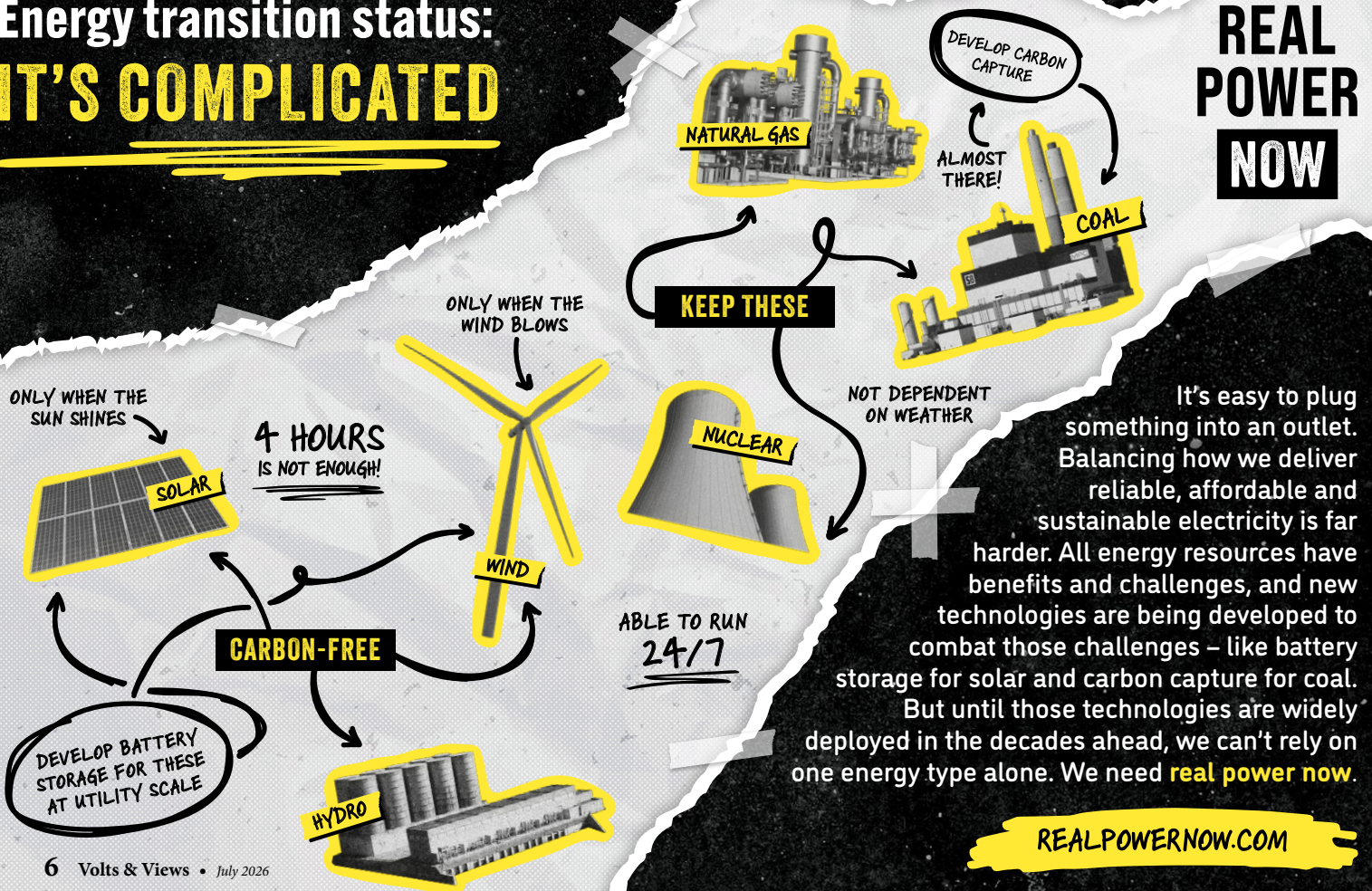
From left to right: Breydon Foss, Sawyer Ginther, Austin Klint, Cade Ginther and Clayton Flaten

This summer, these hardworking gentlemen will be assisting our crews and staff while gaining valuable hands-on experience and learning more about the electric cooperative industry. From supporting daily operations to helping serve our members, they will play an important role in our team throughout the season.

We are proud to provide opportunities for young people to explore career paths, develop new skills and gain real-world experience in a supportive environment. We look forward to working with them and helping them build a strong foundation for their future endeavors.

Please join us in welcoming them to the Roseau Electric Cooperative team!

Energy transition status: IT'S COMPLICATED



It's easy to plug something into an outlet. Balancing how we deliver reliable, affordable and sustainable electricity is far harder. All energy resources have benefits and challenges, and new technologies are being developed to combat those challenges – like battery storage for solar and carbon capture for coal. But until those technologies are widely deployed in the decades ahead, we can't rely on one energy type alone. We need **real power now**.

REALPOWERNOW.COM

PHOTO OF THE MONTH



Chad Nelson, line crew foreman, works on an overhead-to-underground line conversion in Whiteford Township.

member connection

ENERGY TIP

Running multiple major appliances at the same time — like your dishwasher, laundry machines and oven — can spike energy demand and strain the electric grid, especially during peak hours (typically late afternoon to early evening). Instead of stacking appliance use, spread it out throughout the day or shift chores to off-peak hours when energy demand is lower. This not only helps improve overall efficiency but can also reduce your energy costs. A simple habit change, like doing laundry in the morning and running the dishwasher overnight, can make a meaningful difference for both your wallet and energy reliability.

DATES TO REMEMBER

July 19-24
Roseau County Fair

July 21
Electric bill is due

OFFICE HOURS

Monday – Friday
8 a.m. – 4:30 p.m.
Phone: 218-463-1543

AFTER HOURS/OUTAGE NUMBER

Toll-Free: 1-888-847-8840
(main outage call center)

CALL BEFORE YOU DIG

1-800-252-1166 or 811

PAY BY PHONE

1-877-999-3412

SMARTHUB

<https://roseauelectric.smarthub.coop/>

WEBSITE

roseauelectric.coop

OPERATING STATISTICS

	Monthly		Year to Date	
	May 2025	May 2026	May 2025	May 2026
Members	6,724	6,720	6,724	6,720
kWh purchased	9,414,013	10,233,106	69,092,031	70,306,571
% change		8.70%		1.76%
Revenue	1,449,738	1,614,033	8,756,218	9,600,814
Cost of power	870,050	960,205	5,163,054	5,620,284
Other expenses	638,587	658,375	2,948,635	3,392,651
Operating margins	(58,899)	(4,548)	644,529	587,880
Non-operating margins	(10,634)	(19,880)	43,209	(76,031)
Patronage dividends	27,459	-	137,033	83,324
Total margins	(42,074)	(24,428)	824,771	595,173



LIKE US ON FACEBOOK
TO STAY UP TO DATE!

@RoseauElectricCooperativeInc

SUMMER GETAWAY

Energy Savings



Adjust the thermostat

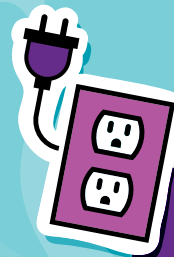
Set your thermostat to at least 78 degrees in summer and 60 degrees in winter while you're away. Even a small change can reduce energy use while keeping your home safe.

When it gets hot, the coolest thing you can do is save on your energy bill – even when you're not at home. While planning your next lake weekend or extended family vacation, keep these few simple steps in mind and see your savings shine!



Turn off lights

Make sure all indoor lights are turned off before leaving. If you want the home to look occupied, consider putting one light on a smart timer.



Unplug electronics

Devices like TVs, coffee makers, gaming systems and phone chargers still use energy when plugged in. Unplug them or use a power strip you can switch off.

Adjust water heater settings

Lowering your water heater temperature or switching it to "vacation mode" can reduce unnecessary energy use.



Wherever you're spending it, Roseau Electric wishes you a safe and memorable summer!



Close blinds and curtains

Keeping blinds closed helps block summer heat and retain warmth during colder months.