

01 CASCADIA PREMIUM RESIDENCE

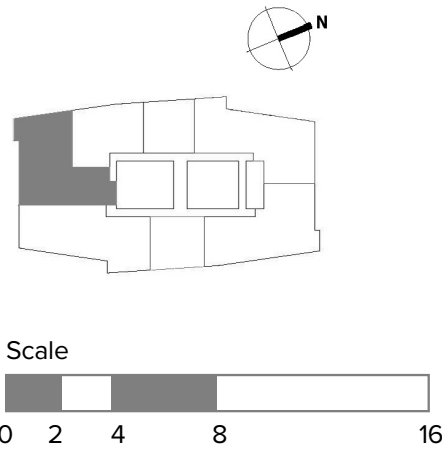
3 BEDROOM / 3.5 BATH

This elegant Premium Residence with expansive city and forested hillside views features three bedrooms, three full baths, one half-bath, secluded den, and private terrace.

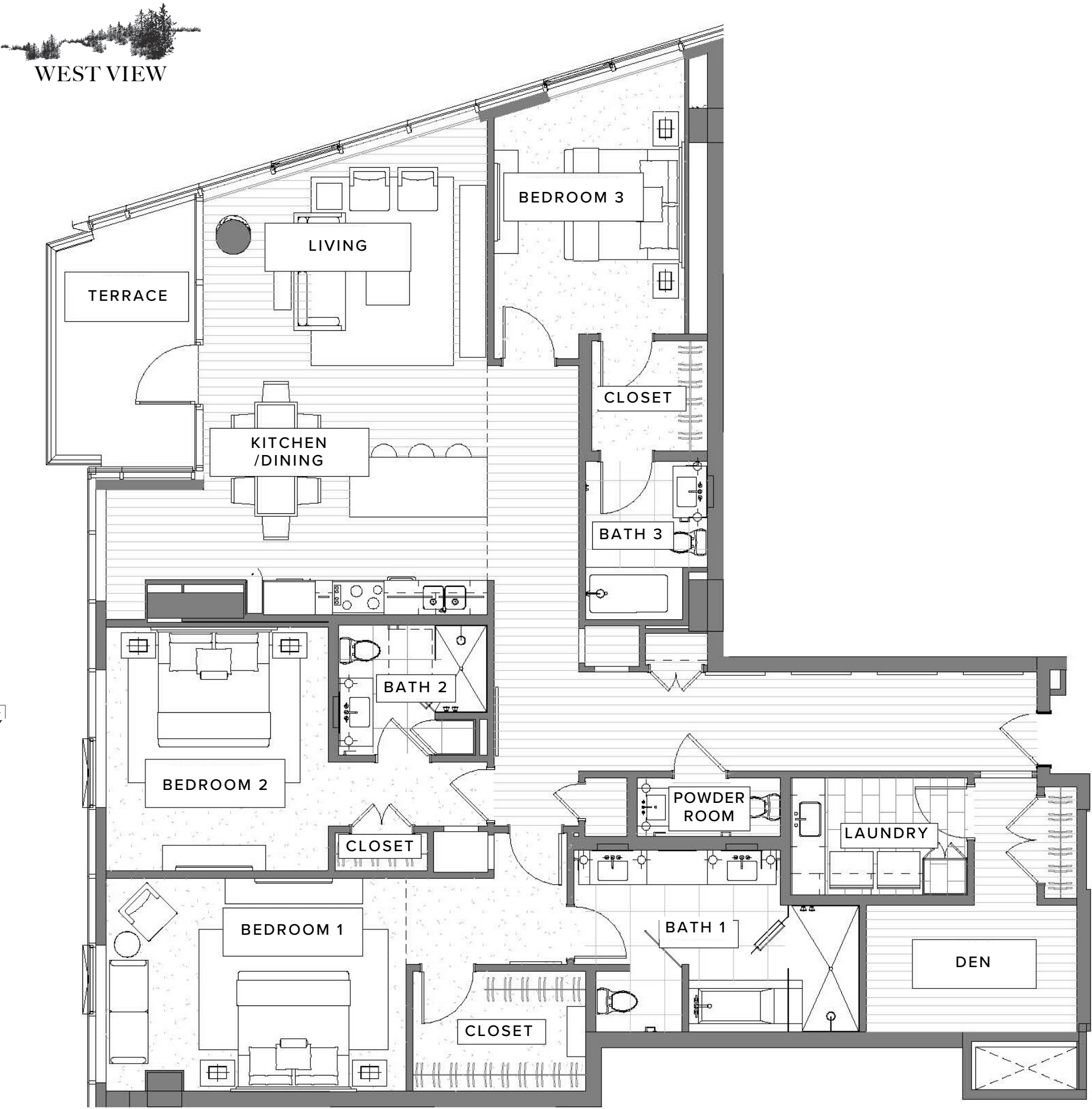
VIEW: PREMIUM SOUTHWEST

STANDOUT FEATURES

- Floor-to-ceiling windows with sweeping views of the downtown city skyline and lush Marquam Nature Park
- Modern kitchen with top-tier appliances
- Large entertaining island in kitchen
- Gas fireplace
- Open-plan kitchen/living area opens onto a glass-walled corner terrace
- Bonus room that can be used as a den or private study
- Spacious walk-in closet in primary bedroom
- Extended entry hallway creates showcase for artwork
- Full-sized laundry room
- Includes two reserved, underground parking spaces



Exact floor plan may vary. All information deemed reliable but not guaranteed.



The Ritz-Carlton Residences, Portland are not owned, sold or developed by The Ritz-Carlton Hotel Company, L.L.C. or its affiliates ("The Ritz-Carlton"). Ready Capital uses The Ritz-Carlton marks under a license from The Ritz-Carlton, which has not confirmed the accuracy of any of the statements or representations made herein. Any renderings and/or depictions are conceptual only and are for the convenience of reference. They should not be relied upon as representations, expressed or implied, or the final details of The Residences.

2 BEDROOM / 2.5 BATH

This spacious Premium Residence with sweeping views of the verdant West Hills features two bedrooms, two full baths, one half-bath, and private terrace.

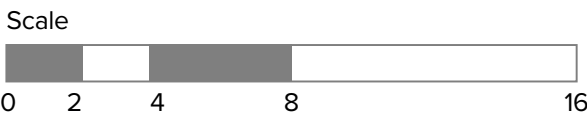
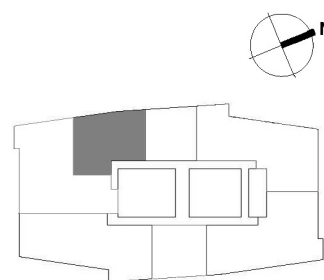
VIEW: PREMIUM WEST

STANDOUT FEATURES

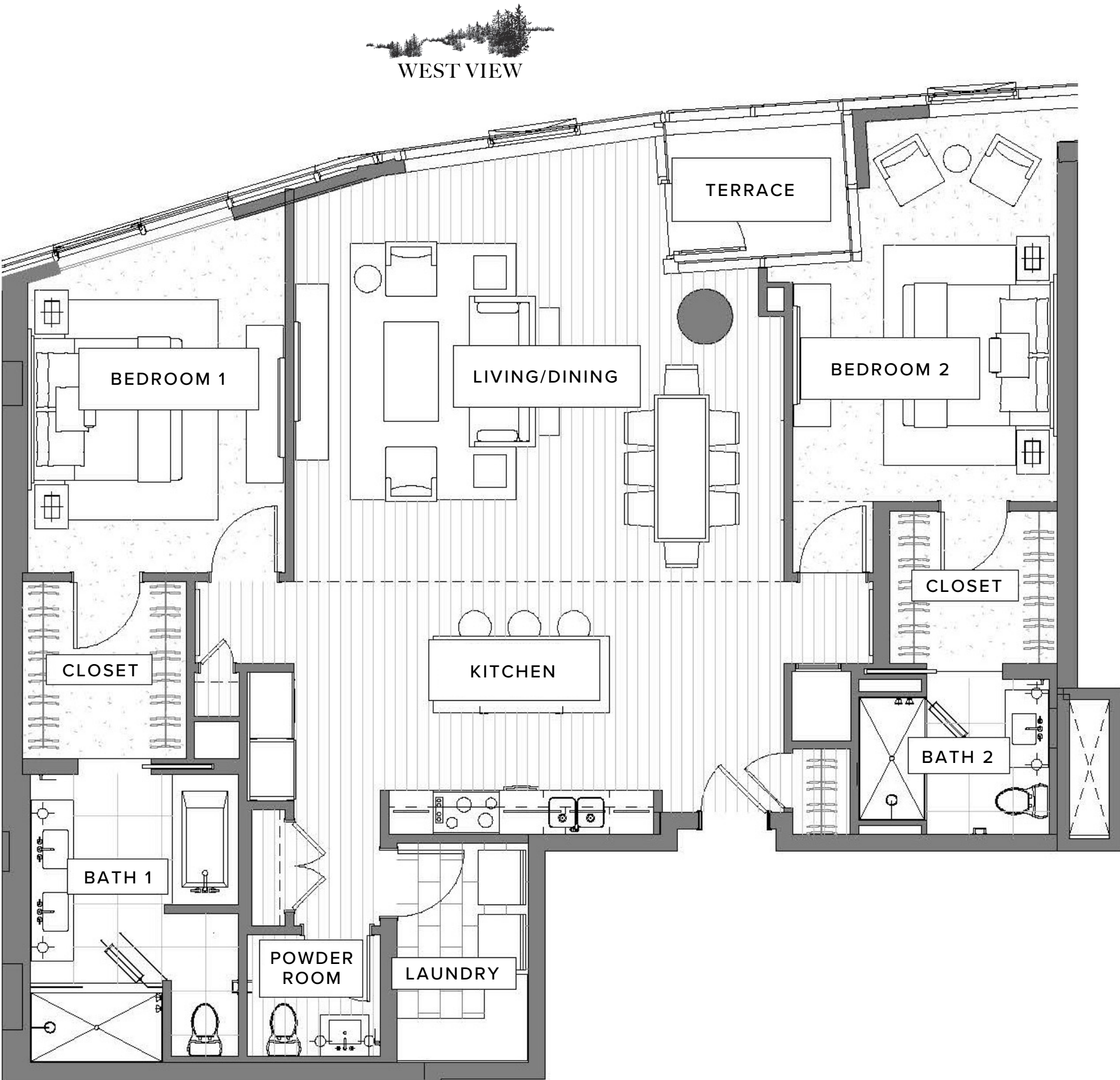
- Floor-to-ceiling windows with expansive views framed by the lush West Hills and Forest Park
- Modern kitchen with top-tier appliances
- Large entertaining island in kitchen
- Gas fireplace
- Bright and airy open-plan kitchen/living area opens onto a cozy glass-walled terrace
- Spacious closets in primary and secondary bedrooms
- Full-sized laundry room
- Includes two reserved, underground parking spaces

 **FOREST FINISH** (OPTION 1)

 **GLACIER FINISH** (OPTION 2)



Exact floor plan may vary. All information deemed reliable but not guaranteed.



The Ritz-Carlton Residences, Portland are not owned, sold or developed by The Ritz-Carlton Hotel Company, L.L.C. or its affiliates ("The Ritz-Carlton"). Ready Capital uses The Ritz-Carlton marks under a license from The Ritz-Carlton, which has not confirmed the accuracy of any of the statements or representations made herein. Any renderings and/or depictions are conceptual only and are for the convenience of reference. They should not be relied upon as representations, expressed or implied, or the final details of The Residences.



1 BEDROOM / 1.5 BATH

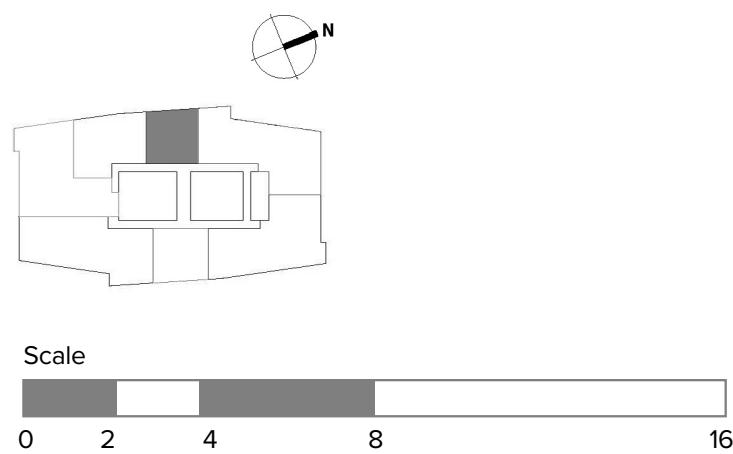
This stylish Premium Residence with sweeping views of the verdant West Hills features one bedroom, one full bath, one half-bath, and private terrace.

VIEW: PREMIUM WEST

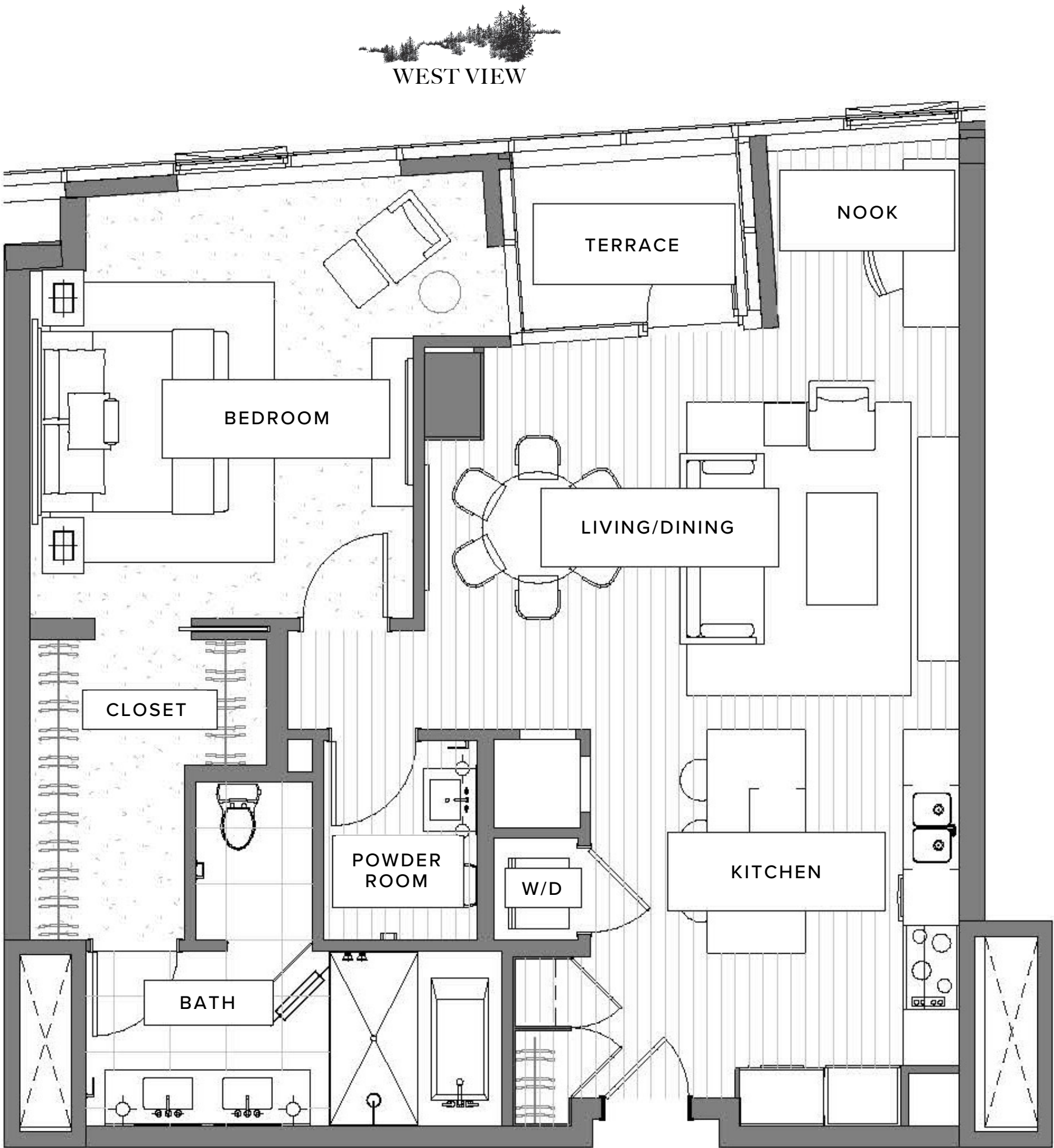
STANDOUT FEATURES

- Floor-to-ceiling windows with expansive views framed by the lush West Hills and Forest Park
- Modern kitchen with top-tier appliances
- Large entertaining island in kitchen
- Gas fireplace
- Open-plan kitchen/living area opens onto a cozy glass-walled terrace
- Bonus nook off living area
- Spacious closet in bedroom
- Hidden stacking washer and dryer
- Includes two reserved, underground parking spaces

-  **FOREST FINISH** (OPTION 1)
-  **GLACIER FINISH** (OPTION 2)



Exact floor plan may vary. All information deemed reliable but not guaranteed.



The Ritz-Carlton Residences, Portland are not owned, sold or developed by The Ritz-Carlton Hotel Company, L.L.C. or its affiliates ("The Ritz-Carlton"). Ready Capital uses The Ritz-Carlton marks under a license from The Ritz-Carlton, which has not confirmed the accuracy of any of the statements or representations made herein. Any renderings and/or depictions are conceptual only and are for the convenience of reference. They should not be relied upon as representations, expressed or implied, or the final details of The Residences.

04 TUMALO PREMIUM RESIDENCE

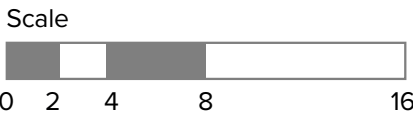
2 BEDROOM / 2.5 BATH

This spacious Premium Residence with breathtaking river, bridge, and mountain views features two bedrooms, two full baths, one half-bath, a den/office, and two terraces.

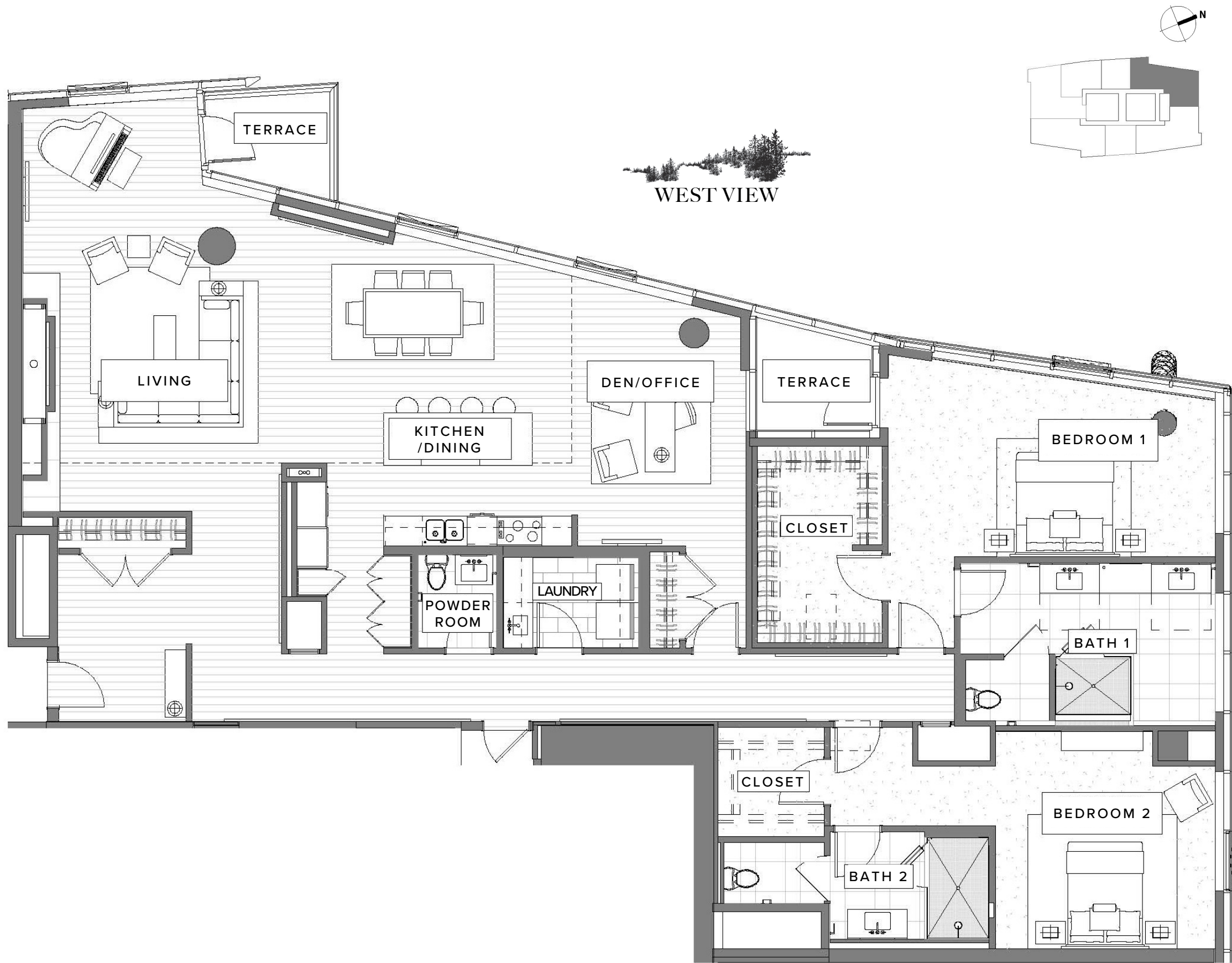
VIEW: PREMIUM NORTHWEST

STANDOUT FEATURES

- Floor-to-ceiling windows with expansive views of the lush West Hills and Forest Park to the west and the Willamette River and spectacular Mount St. Helens to the north
- Modern kitchen with top-tier appliances
- Large entertaining island in kitchen
- Gas fireplace
- Airy open-plan kitchen/living area optimizes natural light throughout the Penthouse
- Two glass-walled terraces, one off the living room and a private outdoor space adjoined to the primary bedroom
- Bonus space that can be used as a den or home office
- Spacious walk-in closet in primary bedroom
- Full-sized laundry room
- Includes two reserved, underground parking spaces



Exact floor plan may vary. All information deemed reliable but not guaranteed.



The Ritz-Carlton Residences, Portland are not owned, sold or developed by The Ritz-Carlton Hotel Company, LLC, or its affiliates ("The Ritz-Carlton"). Ready Capital uses The Ritz-Carlton marks under a license from The Ritz-Carlton, which has not confirmed the accuracy of any of the statements or representations made herein. Any renderings and/or depictions are conceptual only and are for the convenience of reference. They should not be relied upon as representations, expressed or implied, of the final details of the Residences.



05 METLAKO PREMIUM RESIDENCE

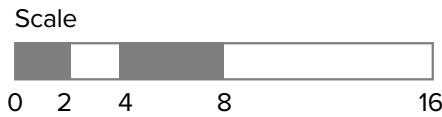
2 BEDROOM / 2.5 BATH

This spacious Premium Residence with spectacular views of the Willamette River and multiple Cascade peaks features two bedrooms, two full baths, one half-bath, a den/office, and two terraces.

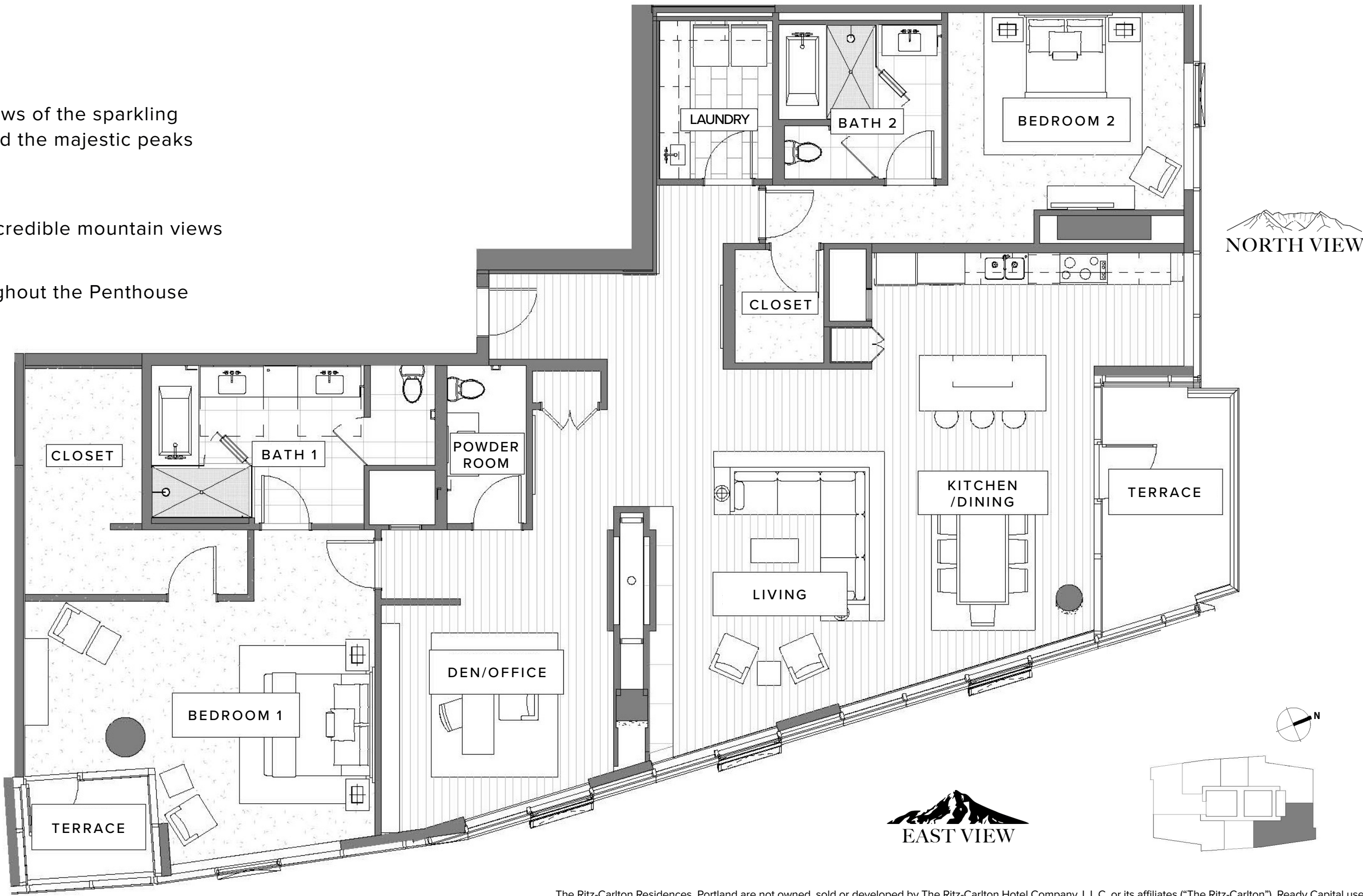
VIEW: PREMIUM NORTHEAST

STANDOUT FEATURES

- Floor-to-ceiling windows with sweeping views of the sparkling Willamette River, downtown city skyline, and the majestic peaks of Mount St. Helens and Mt. Hood
- Modern kitchen with top-tier appliances
- Large entertaining island in kitchen with incredible mountain views
- Gas fireplace
- Corner layout optimizes natural light throughout the Penthouse
- Open-plan kitchen/living area opens onto a glass-walled corner terrace
- Second terrace provides a private space adjoined to the primary bedroom
- Spacious walk-in closet in primary bedroom
- Private bonus room that can be used as a study or den
- Full-sized laundry room
- Includes two reserved, underground parking spaces



Exact floor plan may vary. All information deemed reliable but not guaranteed.



The Ritz-Carlton Residences, Portland are not owned, sold or developed by The Ritz-Carlton Hotel Company, L.L.C. or its affiliates ("The Ritz-Carlton"). Ready Capital uses The Ritz-Carlton marks under a license from The Ritz-Carlton, which has not confirmed the accuracy of any of the statements or representations made herein. Any renderings and/or depictions are conceptual only and are for the convenience of reference. They should not be relied upon as representations, expressed or implied, of the final details of The Residences.

06 CITY LIGHTS PREMIUM RESIDENCE

1 BEDROOM / 1.5 BATH

This elegant Premium Residence with spectacular Willamette River and Mt. Hood views features one bedroom, one full bath, one half-bath, and private terrace.

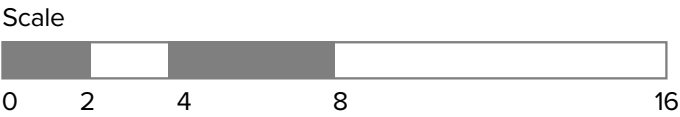
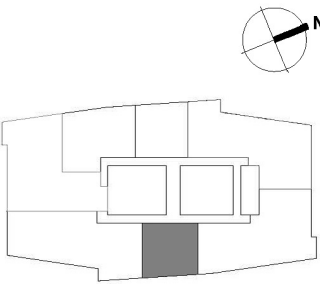
VIEW: PREMIUM EAST

STANDOUT FEATURES

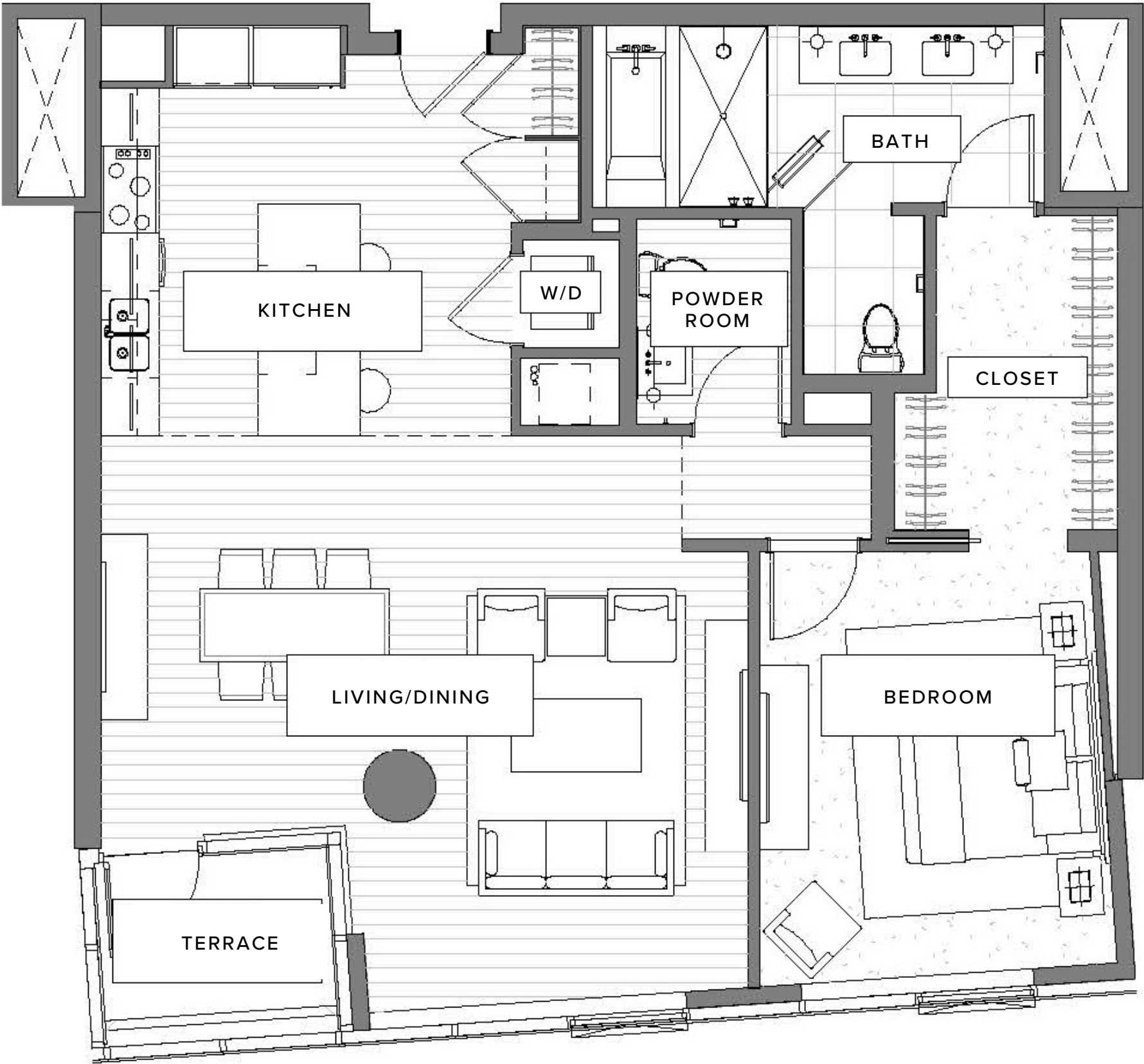
- Floor-to-ceiling windows with sweeping views of the sparkling Willamette River, downtown city skyline, and majestic Mt. Hood
- Modern kitchen with top-tier appliances
- Large entertaining island in kitchen
- Gas fireplace
- Bright, airy living area opens onto a cozy glass-walled terrace
- Spacious closet in bedroom
- Hidden stacking washer and dryer
- Includes one reserved, underground parking space

 FOREST FINISH (OPTION 1)

 GLACIER FINISH (OPTION 2)



Exact floor plan may vary. All information deemed reliable but not guaranteed.



The Ritz-Carlton Residences, Portland are not owned, sold or developed by The Ritz-Carlton Hotel Company, L.L.C. or its affiliates ("The Ritz-Carlton"). Ready Capital uses The Ritz-Carlton marks under a license from The Ritz-Carlton, which has not confirmed the accuracy of any of the statements or representations made herein. Any renderings and/or depictions are conceptual only and are for the convenience of reference. They should not be relied upon as representations, expressed or implied, or the final details of The Residences.

07 WAHKEENA PREMIUM RESIDENCE

2 BEDROOM / 2.5 BATH

This spacious Premium Residence with spectacular Willamette River and Mt. Hood views features two bedrooms, two full baths, one half-bath, private office, and two terraces.

VIEW: PREMIUM SOUTHEAST

STANDOUT FEATURES

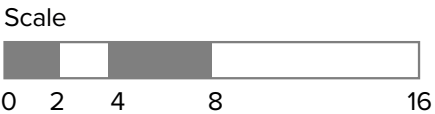
- Floor-to-ceiling windows with sweeping views of the sparkling Willamette River, lush Marquam Nature Park, downtown city skyline, and majestic Mt. Hood
- Modern kitchen with top-tier appliances
- Large entertaining island in kitchen
- Gas fireplace
- Corner layout optimizes natural light throughout the Penthouse
- Bright, airy living room opens onto a cozy glass-walled terrace
- Second terrace provides a private space adjoined to the primary bedroom
- Spacious walk-in closet in primary bedroom
- Bonus room that can be used as an office or den
- Full-sized laundry room
- Includes two reserved, underground parking spaces



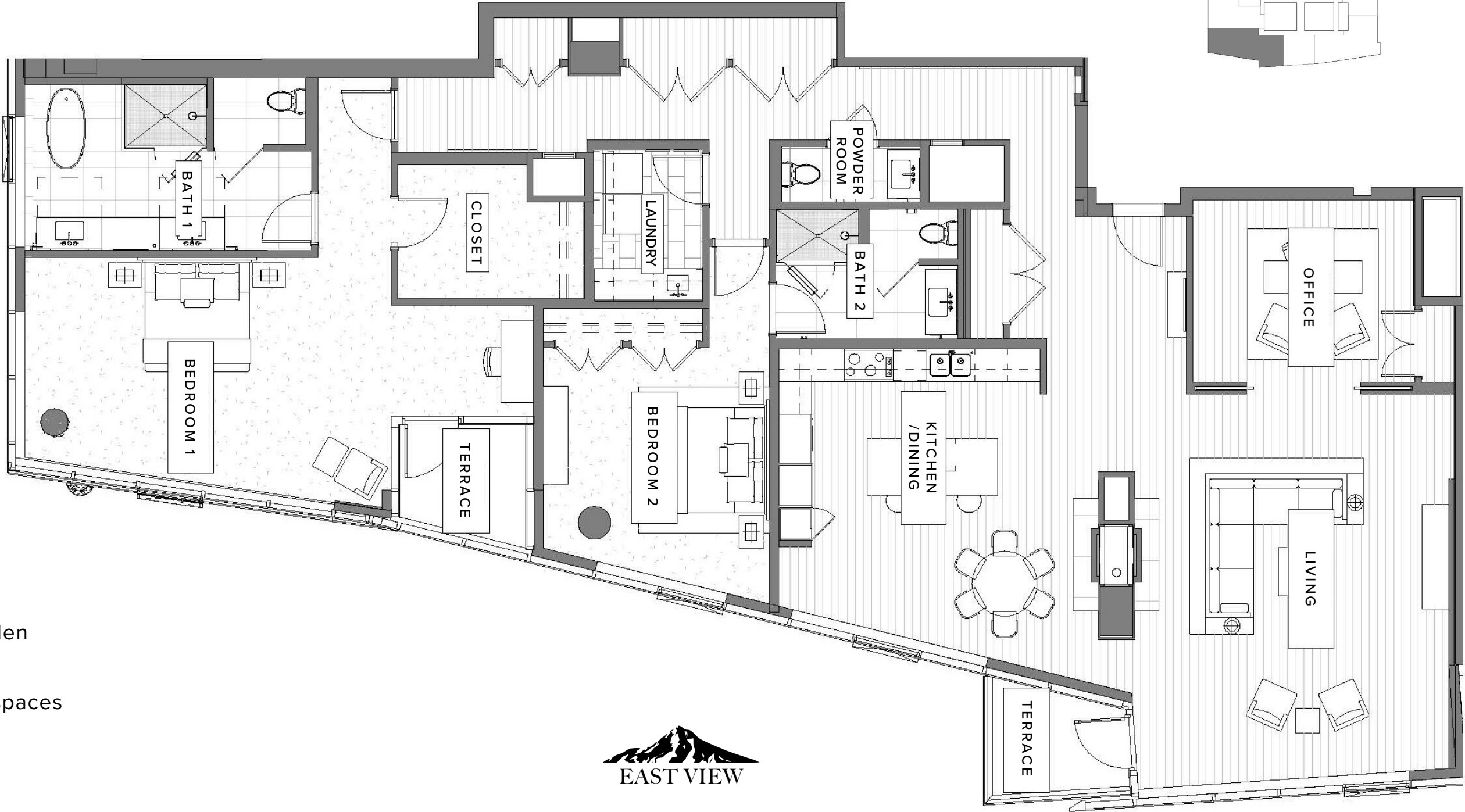
SOUTH VIEW



FOREST FINISH



Exact floor plan may vary. All information deemed reliable but not guaranteed.



EAST VIEW

The Ritz-Carlton Residences, Portland are not owned, sold or developed by The Ritz-Carlton Hotel Company, L.L.C. or its affiliates ("The Ritz-Carlton"). Ready Capital uses The Ritz-Carlton marks under a license from The Ritz-Carlton, which has not confirmed the accuracy of any of the statements or representations made herein. Any renderings and/or depictions are conceptual only and are for the convenience of reference. They should not be relied upon as representations, expressed or implied, of the final details of The Residences.