

3401 SAHALE PENTHOUSE

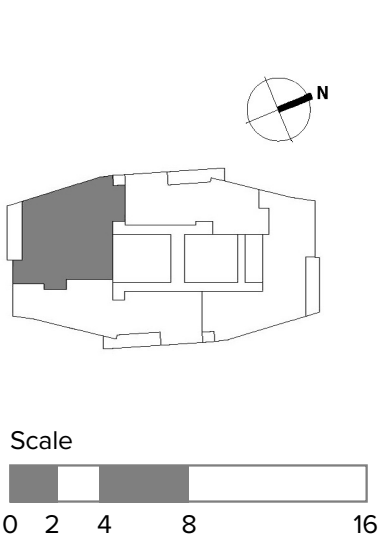
3 BEDROOM / 3.5 BATH

This spacious and luxurious Penthouse with views of the city skyline and verdant rolling hills features three bedrooms, three full baths, one half-bath, a private study, media room, and two terraces.

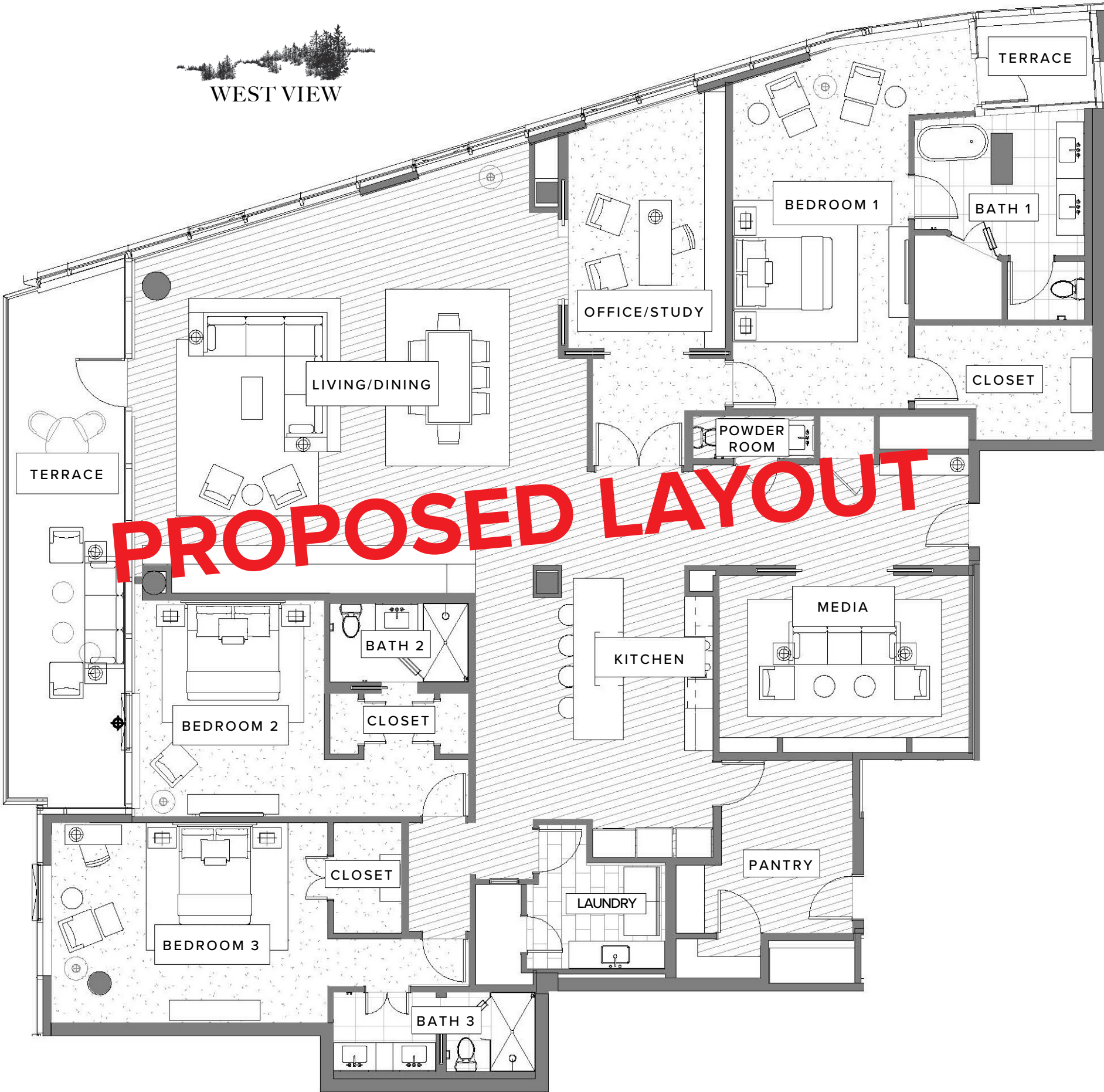
VIEW: PREMIUM SOUTHWEST

STANDOUT FEATURES

- Floor-to-ceiling windows with sweeping views of the sparkling Willamette River, South Waterfront, downtown city skyline, and lush Marquam Nature Park
- Bright, airy living area with abundant natural light
- Expansive glass-walled corner terrace with room for multiple seating areas
- Second smaller terrace provides a private outdoor space to the primary bedroom
- Private study adjoins the primary bedroom
- Separate media and entertainment room
- Spacious pantry opens from the kitchen
- Full-sized laundry room
- Includes two reserved, underground parking spaces



Exact floor plan may vary. All information deemed reliable but not guaranteed.



The Ritz-Carlton Residences, Portland are not owned, sold or developed by The Ritz-Carlton Hotel Company, L.L.C. or its affiliates ("The Ritz-Carlton"). Ready Capital uses The Ritz-Carlton marks under a license from The Ritz-Carlton, which has not confirmed the accuracy of any of the statements or representations made herein. Any renderings and/or depictions are conceptual only and are for the convenience of reference. They should not be relied upon as representations, expressed or implied, or the final details of The Residences.

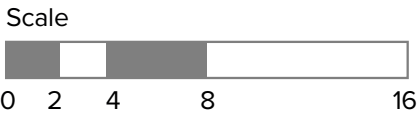
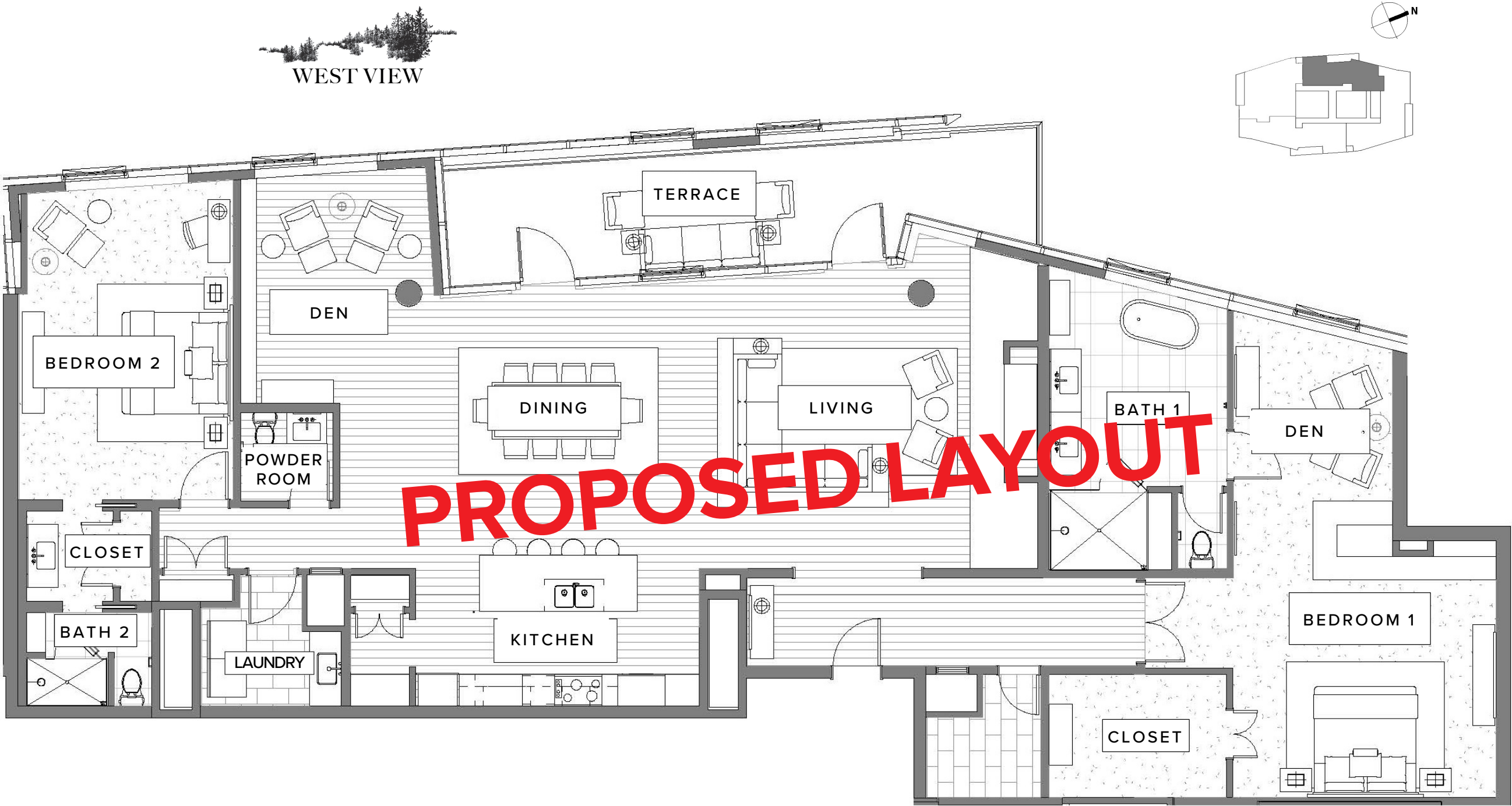
2 BEDROOM / 2.5 BATH

This elegant Penthouse with sweeping views of the verdant West Hills features two bedrooms, two full baths, one half-bath, den/office, and large private terrace.

VIEW: PREMIUM WEST

STANDOUT FEATURES

- Floor-to-ceiling windows with sweeping views framed by the lush West Hills and Forest Park
- Open-plan kitchen/living area
- Expansive glass-walled terrace with spectacular views of the Pearl District skyline and Mount St Helens
- Bonus space that can be used as a den or office
- Spacious walk-in closet in primary bedroom
- Full-sized laundry room
- Includes two reserved, underground parking spaces



Exact floor plan may vary. All information deemed reliable but not guaranteed.

The Ritz-Carlton Residences, Portland are not owned, sold or developed by The Ritz-Carlton Hotel Company, L.L.C. or its affiliates ("The Ritz-Carlton"). Ready Capital uses The Ritz-Carlton marks under a license from The Ritz-Carlton, which has not confirmed the accuracy of any of the statements or representations made herein. Any renderings and/or depictions are conceptual only and are for the convenience of reference. They should not be relied upon as representations, expressed or implied, of the final details of The Residences.

3403 LOOWIT PENTHOUSE

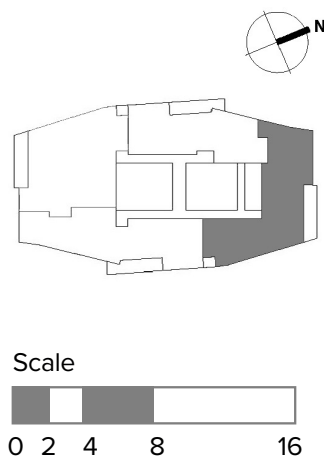
3 BEDROOM / 3.5 BATH

This spacious Penthouse with spectacular views of the Willamette River and multiple Cascade peaks from an expansive corner terrace features three bedrooms, three full baths, one half-bath, and private den.

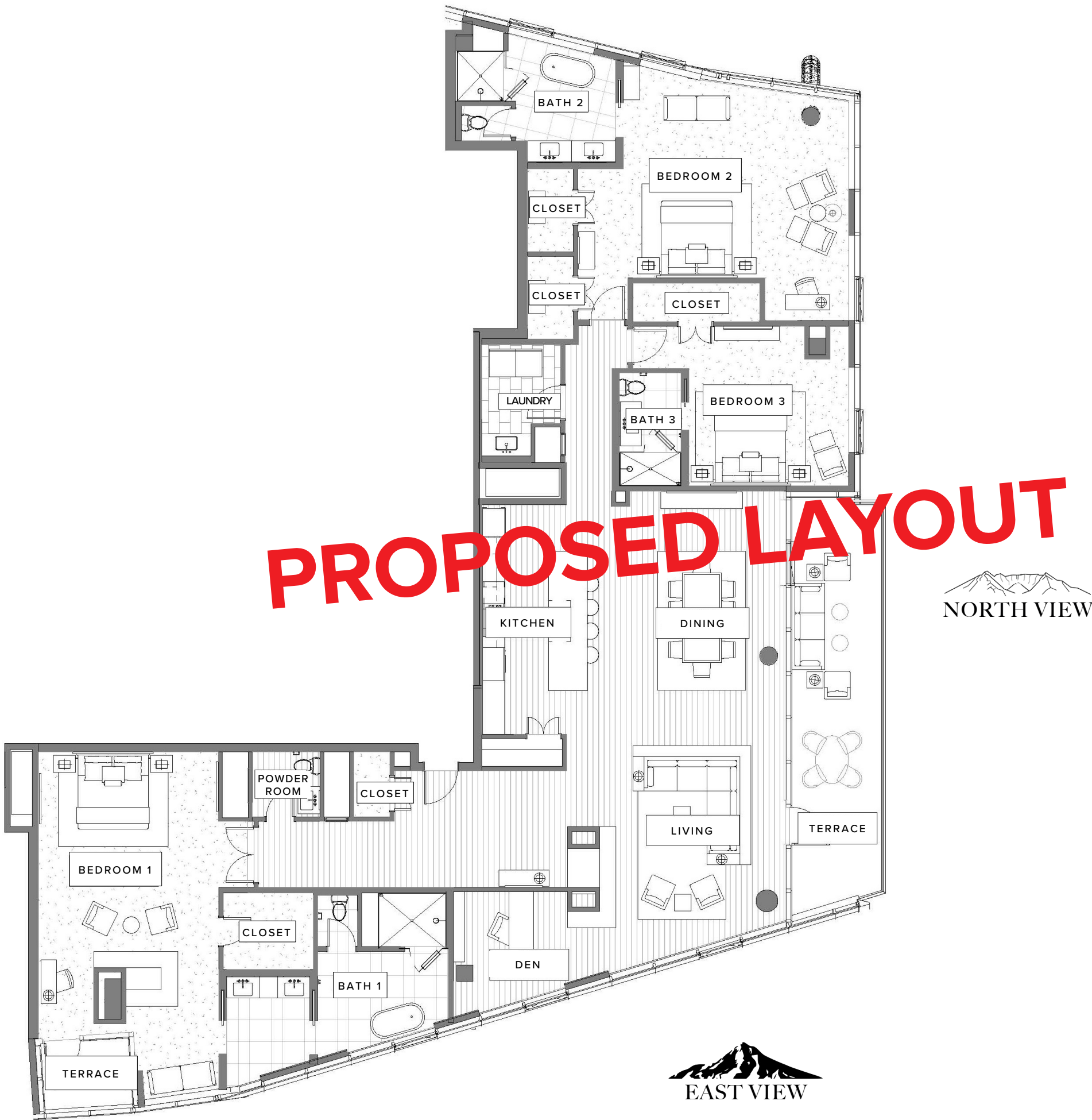
VIEW: PREMIUM NORTHEAST

STANDOUT FEATURES

- Floor-to-ceiling windows wrapping around the east, north, and west sides of the building provide 270° sweeping views of the sparkling Willamette River, downtown city skyline, and majestic peaks of Mount St. Helens and Mt. Hood
- Open-plan kitchen/living area opens onto an glass-walled corner terrace with uninterrupted mountain, city, and river views
- Corner layout optimizes natural light throughout
- Bonus room that can be used as a den or office
- Second smaller terrace provides a private outdoor space adjoined to the primary bedroom
- Walk-in closet in primary bedroom
- Full-sized laundry room
- Includes two reserved, underground parking spaces



Exact floor plan may vary. All information deemed reliable but not guaranteed.

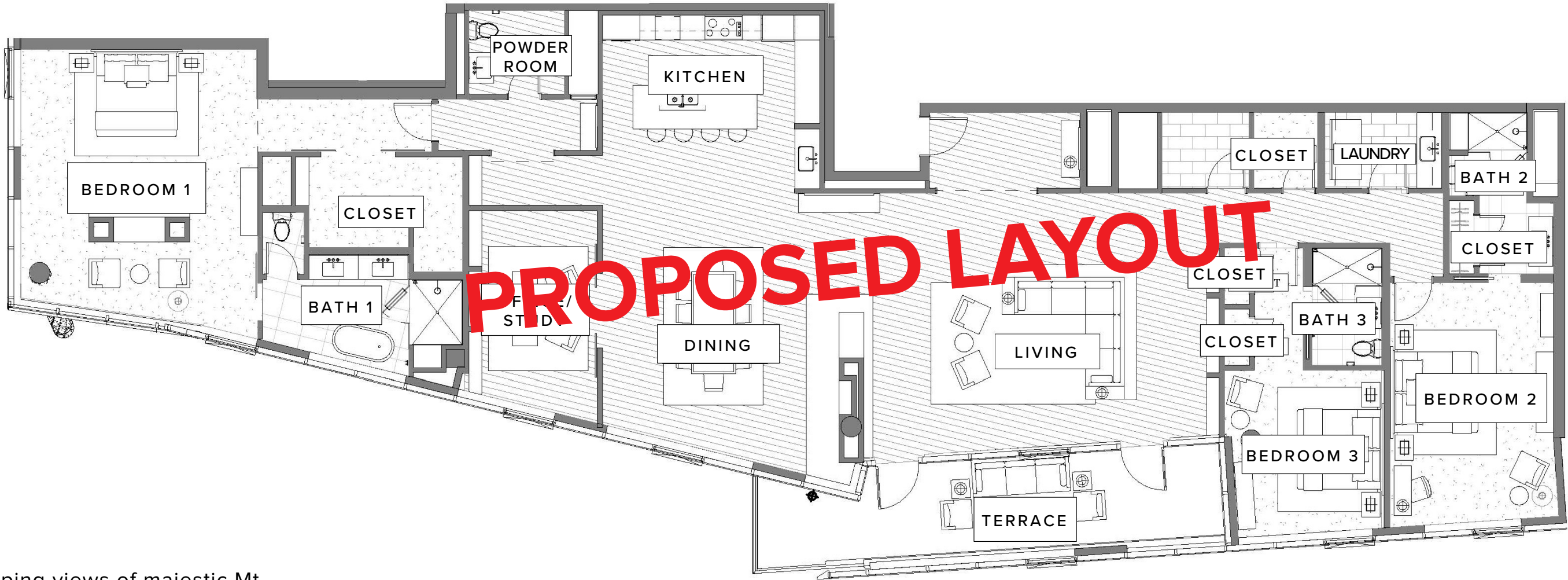


The Ritz-Carlton Residences, Portland are not owned, sold or developed by The Ritz-Carlton Hotel Company, L.L.C. or its affiliates ("The Ritz-Carlton"). Ready Capital uses The Ritz-Carlton marks under a license from The Ritz-Carlton, which has not confirmed the accuracy of any of the statements or representations made herein. Any renderings and/or depictions are conceptual only and are for the convenience of reference. They should not be relied upon as representations, expressed or implied, or the final details of The Residences.

3404 WY'EAST PENTHOUSE

3 BEDROOM / 3.5 BATH

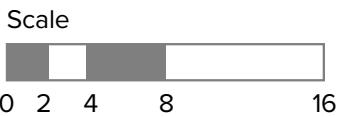
This elegant Penthouse with spectacular views of Mt. Hood and the Willamette River from a large private terrace features three bedrooms, three full baths, one half-bath, and secluded study.



VIEW: PREMIUM SOUTHEAST

STANDOUT FEATURES

- Floor-to-ceiling windows with sweeping views of majestic Mt. Hood, the sparkling Willamette River, lush Marquam Nature Park, downtown city skyline
- Open kitchen/dining layout optimizes natural light throughout
- Spacious living area opens onto an expansive glass-walled terrace
- Bonus room that can be used as a study or den
- Spacious walk-in closet in primary bedroom
- Full-sized laundry room
- Includes two reserved, underground parking spaces



Exact floor plan may vary. All information deemed reliable but not guaranteed.

The Ritz-Carlton Residences, Portland are not owned, sold or developed by The Ritz-Carlton Hotel Company, L.L.C. or its affiliates ("The Ritz-Carlton"). Ready Capital uses The Ritz-Carlton marks under a license from The Ritz-Carlton, which has not confirmed the accuracy of any of the statements or representations made herein. Any renderings and/or depictions are conceptual only and are for the convenience of reference. They should not be relied upon as representations, expressed or implied, of the final details of The Residences.

3501 SEEKSEEKQUA PENTHOUSE

TERRACE

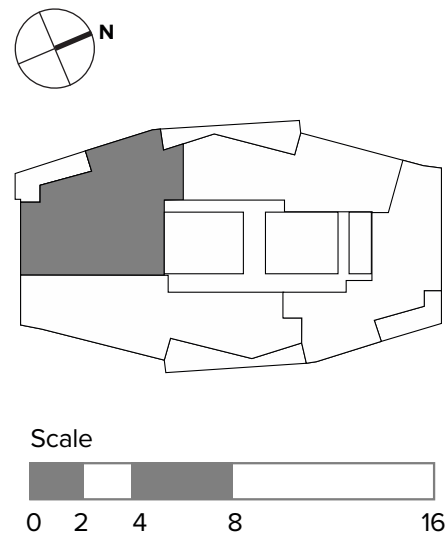
3 BEDROOM / 3 BATH

This spacious and luxurious top-floor Penthouse with views of the city skyline and verdant rolling hills features three bedrooms, three full baths, a cozy media room, and expansive corner terrace.

VIEW: PREMIUM SOUTHWEST

STANDOUT FEATURES

- Floor-to-ceiling windows with sweeping views of the sparkling Willamette River, south waterfront, downtown city skyline and lush Marquam Nature Park
- Glass-walled corner terrace with 270° visibility and ample room for multiple seating areas
- Bright, airy living room with abundant natural light
- Cozy nook off living area
- Separate media and entertainment room
- Spacious walk-in closet in primary bedroom
- Full-sized laundry room
- Separate utility room
- Includes two reserved, underground parking spaces



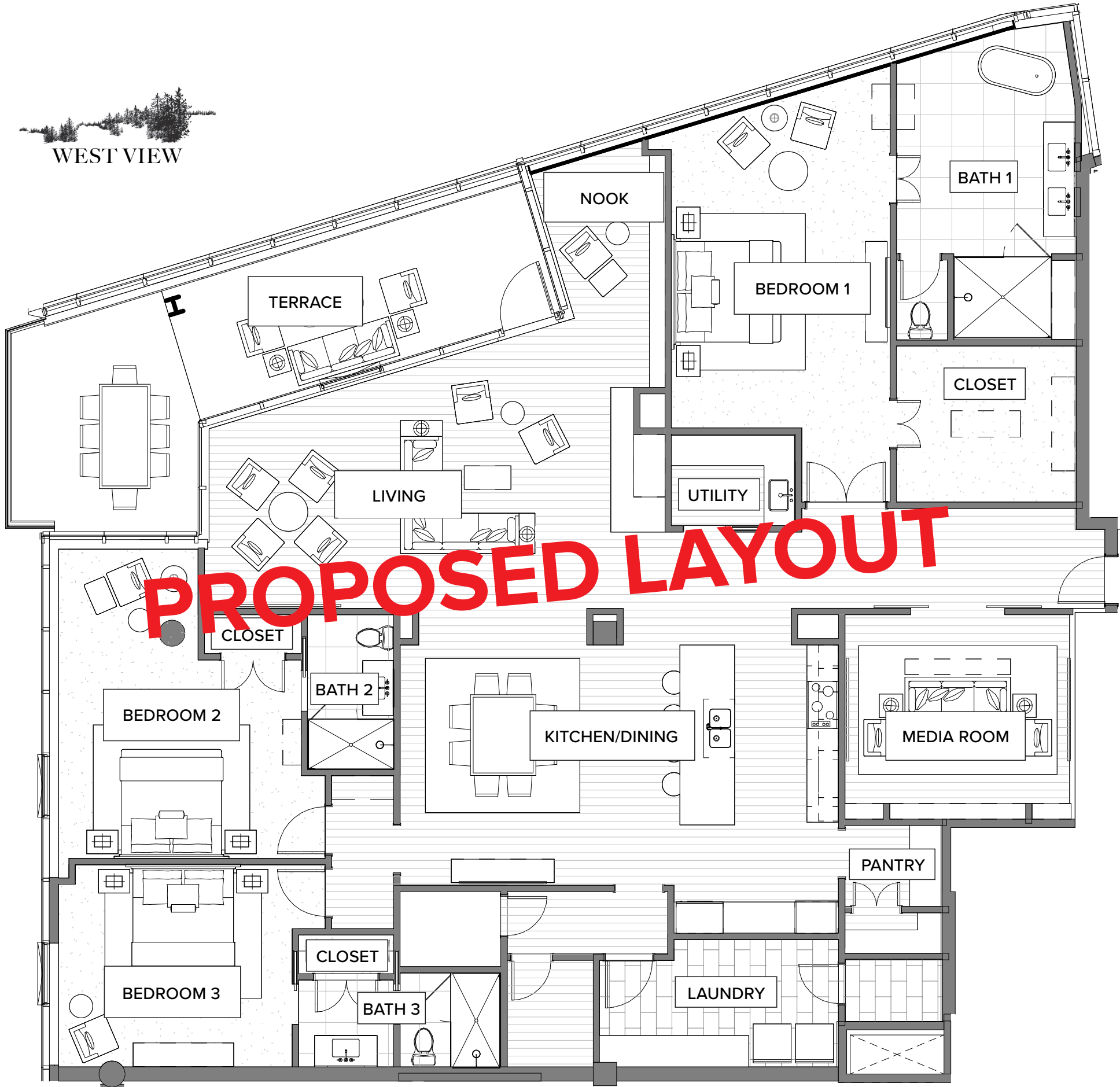
Exact floor plan may vary. All information deemed reliable but not guaranteed.



SOUTH VIEW



WEST VIEW



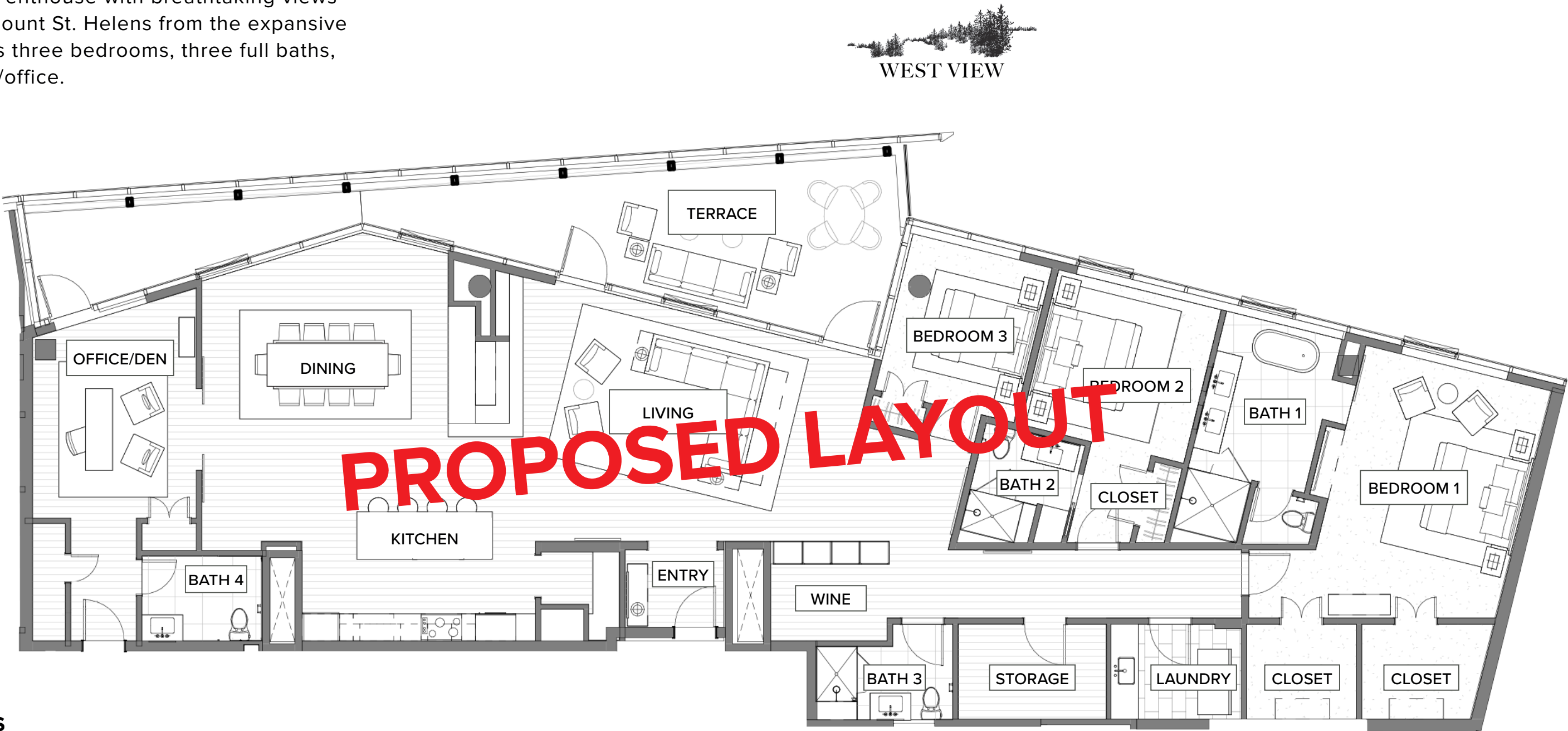
The Ritz-Carlton Residences, Portland are not owned, sold or developed by The Ritz-Carlton Hotel Company, L.L.C. or its affiliates ("The Ritz-Carlton"). Ready Capital uses The Ritz-Carlton marks under a license from The Ritz-Carlton, which has not confirmed the accuracy of any of the statements or representations made herein. Any renderings and/or depictions are conceptual only and are for the convenience of reference. They should not be relied upon as representations, expressed or implied, or the final details of The Residences.

3502 KLINKITAT PENTHOUSE

3 BEDROOM / 3.5 BATH

This elegant top-floor Penthouse with breathtaking views of the West Hills and Mount St. Helens from the expansive private terrace features three bedrooms, three full baths, one half-bath, and den/office.

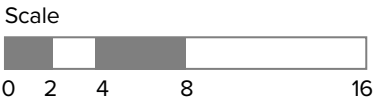
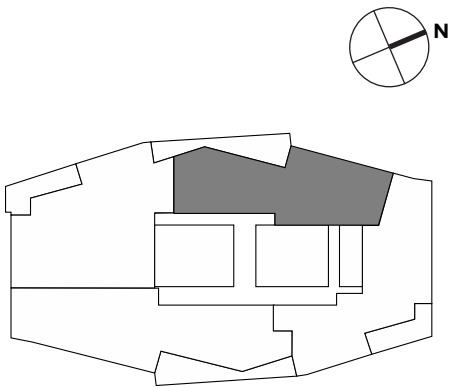
VIEW: PREMIUM WEST



STANDOUT FEATURES

- Floor-to-ceiling windows with sweeping views of the lush West Hills and Forest Park
- Open-plan kitchen/living area opens onto an glass-walled terrace with spectacular views of the Pearl District skyline and Mount St. Helens
- Bonus room that can be used as a den or office
- Personal wine storage
- Spacious closets in primary bedroom
- Full-sized laundry room
- Includes two reserved, underground parking spaces

Exact floor plan may vary. All information deemed reliable but not guaranteed.



The Ritz-Carlton Residences, Portland are not owned, sold or developed by The Ritz-Carlton Hotel Company, L.L.C. or its affiliates ("The Ritz-Carlton"). Ready Capital uses The Ritz-Carlton marks under a license from The Ritz-Carlton, which has not confirmed the accuracy of any of the statements or representations made herein. Any renderings and/or depictions are conceptual only and are for the convenience of reference. They should not be relied upon as representations, expressed or implied, or the final details of The Residences.

3503 TAHOMA PENTHOUSE

3 BEDROOM / 3.5 BATH

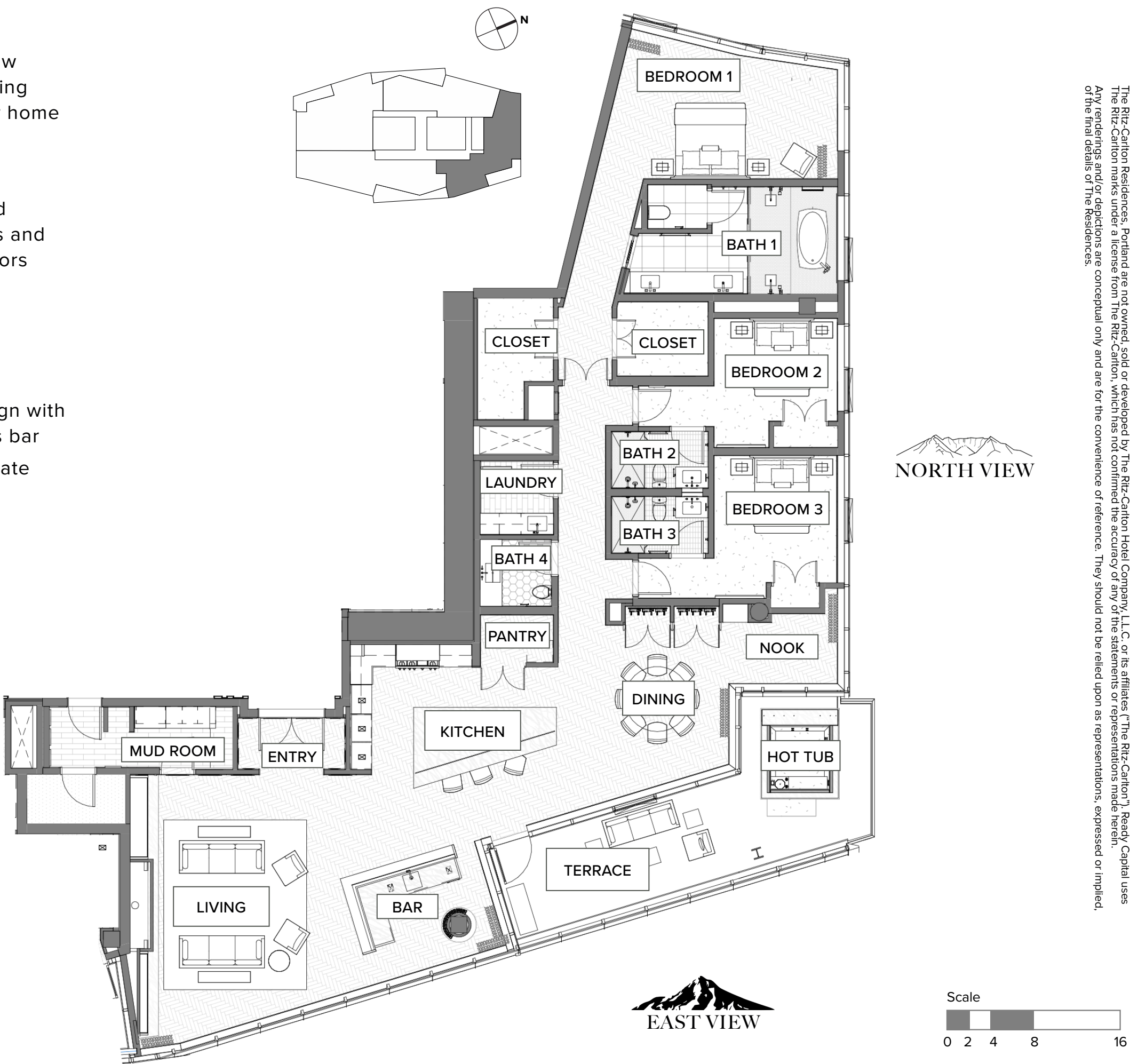
The Tahoma Penthouse is considered the premier Penthouse in the new Ritz-Carlton Residences, Portland. Perched on the top floor and wrapping around the east, north, and west sides of the building, this spectacular home features 270 degrees of uninterrupted mountain, city, and river views.

Innovation and contemporary design meet eclectic high style in this sophisticated Penthouse. Expansive interiors are defined by a polished style and the use of the highest quality materials and luxurious fixtures and fittings. No detail was left to chance as designer, artisans, and fabricators with impeccable standards created flawless results.

VIEW: PREMIUM NORTHEAST

STANDOUT FEATURES

- Interior details by Winn Winn Interiors include a monochromatic design with crystal accents and wainscot paneling, hidden doors, and a luxurious bar
- A custom hot tub on the terrace with spectacular views, the only private hot tub in the building
- Barrel ceiling entry
- 72” gas fireplace with cool touch technology
- Gourmet thermador appliances
- 5’ galley sink with dual faucets
- Integrated architectural lighting and smart system
- 14’ foot vaulted ceiling, double rain-head shower and 6’ freestanding soaking tub in primary bathroom
- Wind-protected balcony
- Gas outdoor fireplace hook up
- His and hers custom walk-in closets in primary bedroom
- 16’ vaulted ceiling and custom motorized draperies and sheers in primary bedroom
- Full-sized laundry room
- Includes two reserved, underground parking spaces



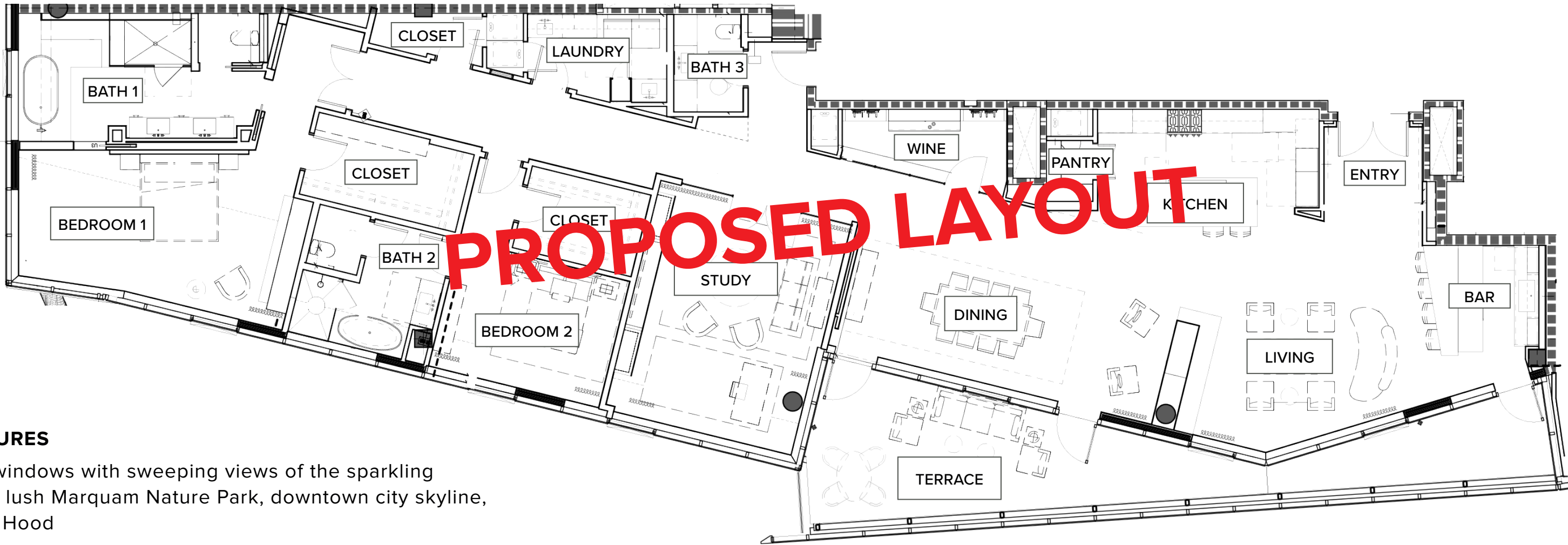
Exact floor plan may vary. All information deemed reliable but not guaranteed.

3504 MAZAMA PENTHOUSE

2 BEDROOM / 2.5 BATH

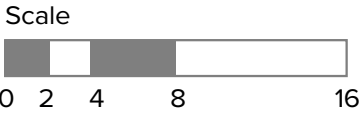
This elegant Penthouse with spectacular views of the Willamette River and Mt. Hood from a large private terrace features two bedrooms, two full baths, one half-bath, secluded study, and wet bar.

VIEW: PREMIUM SOUTHEAST



STANDOUT FEATURES

- Floor-to-ceiling windows with sweeping views of the sparkling Willamette River, lush Marquam Nature Park, downtown city skyline, and majestic Mt. Hood
- Open kitchen/dining layout optimizes natural light throughout
- Spacious living area opens onto an expansive glass-walled terrace
- Wet bar area designed for entertaining
- Personal wine storage room
- Bonus room that can be used as a study or den
- Spacious walk-in closets in both bedrooms
- Full-sized laundry room
- Includes two reserved, underground parking spaces



Exact floor plan may vary. All information deemed reliable but not guaranteed.

The Ritz-Carlton Residences, Portland are not owned, sold or developed by The Ritz-Carlton Hotel Company, L.L.C. or its affiliates ("The Ritz-Carlton"). Ready Capital uses The Ritz-Carlton marks under a license from The Ritz-Carlton, which has not confirmed the accuracy of any of the statements or representations made herein. Any renderings and/or depictions are conceptual only and are for the convenience of reference. They should not be relied upon as representations, expressed or implied, or the final details of The Residences.