

# 10 MT. HOOD SIGNATURE SUITE

## 2 BEDROOM / 2.5 BATH



This luxurious Residence with spectacular river and mountain views features two bedrooms, two full baths, one half-bath, and private terrace.

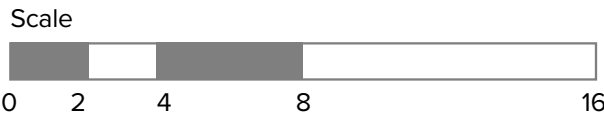
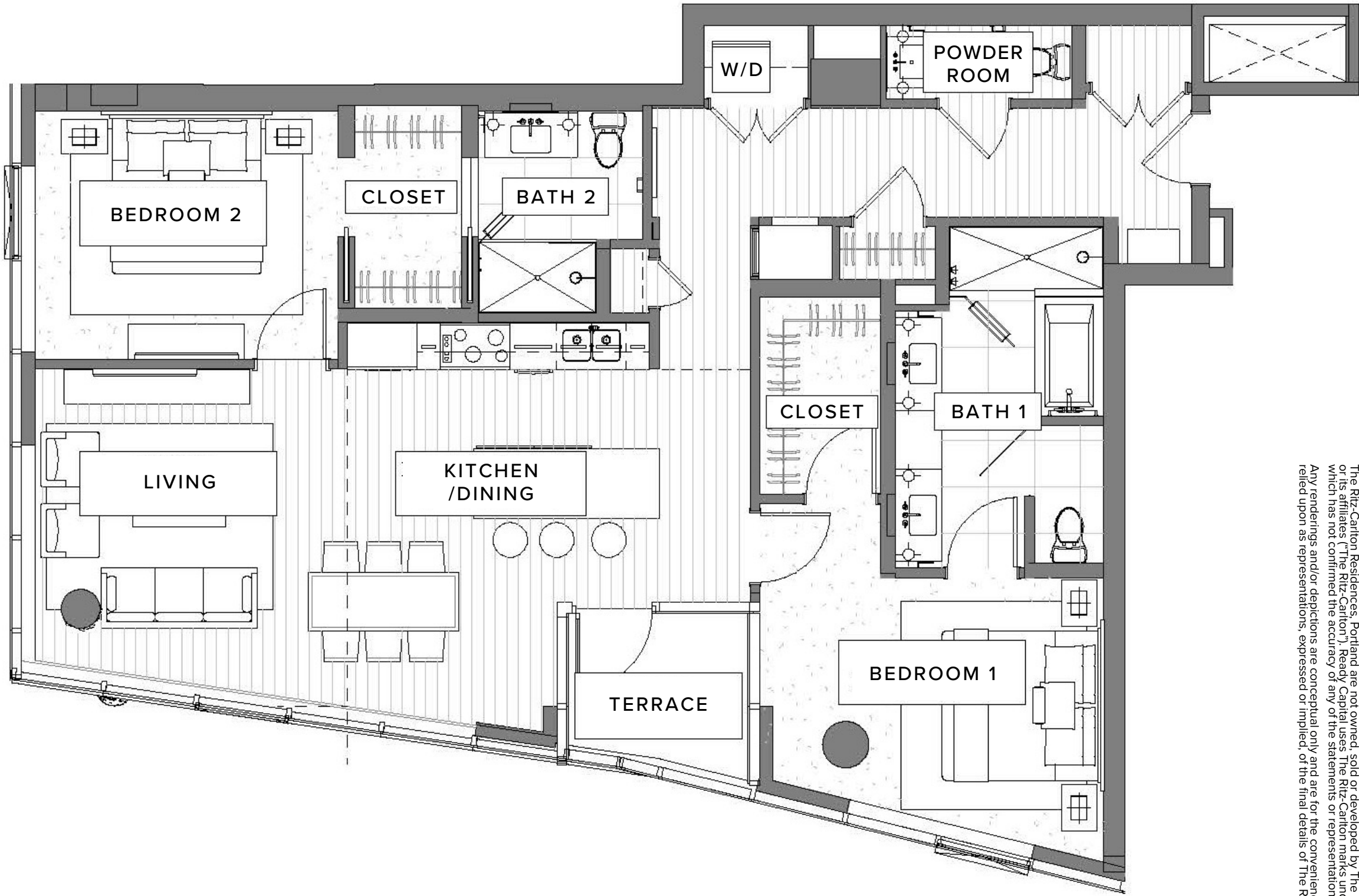
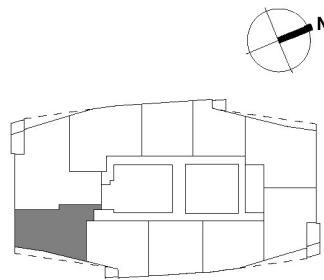
**VIEW:** PREMIUM SOUTHEAST

### STANDOUT FEATURES

- Floor-to-ceiling windows with sweeping views of the sparkling Willamette River, majestic Mt. Hood, lush Marquam Nature Park, and downtown city skyline
- Modern kitchen with top-tier appliances
- Large entertaining island in kitchen
- Airy, open-plan kitchen/living area opens onto a cozy glass-walled terrace
- Corner layout optimizes natural light throughout the Residence
- Walk-in closets in both bedrooms
- Extended entry hallway creates showcase for artwork
- Hidden stacking washer and dryer
- Includes one reserved, underground parking space



-  **COASTAL FINISH** (OPTION 1)
-  **MOUNTAIN FINISH** (OPTION 2)



Exact floor plan may vary. All information deemed reliable but not guaranteed.

The Ritz-Carlton Residences, Portland are not owned, sold or developed by The Ritz-Carlton Hotel Company, L.L.C. or its affiliates ("The Ritz-Carlton"). Ready Capital uses The Ritz-Carlton marks under a license from The Ritz-Carlton, which has not confirmed the accuracy of any of the statements or representations made herein. Any renderings and/or depictions are conceptual only and are for the convenience of reference. They should not be relied upon as representations, expressed or implied, of the final details of The Residences.