

06 ST. HELENS SIGNATURE SUITE



2 BEDROOM / 2.5 BATH

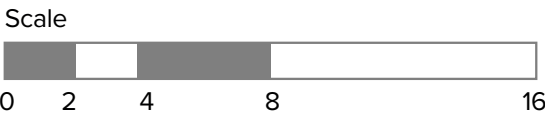
This bright and airy Residence with spectacular views of the Willamette River and multiple Cascade peaks features two bedrooms, two full baths, one half-bath, and private corner terrace.

VIEW: PREMIUM NORTHEAST

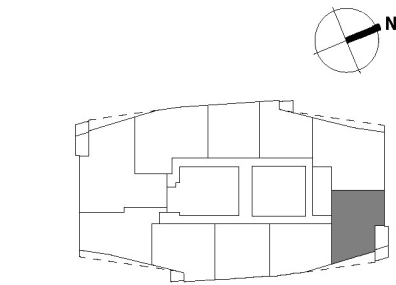
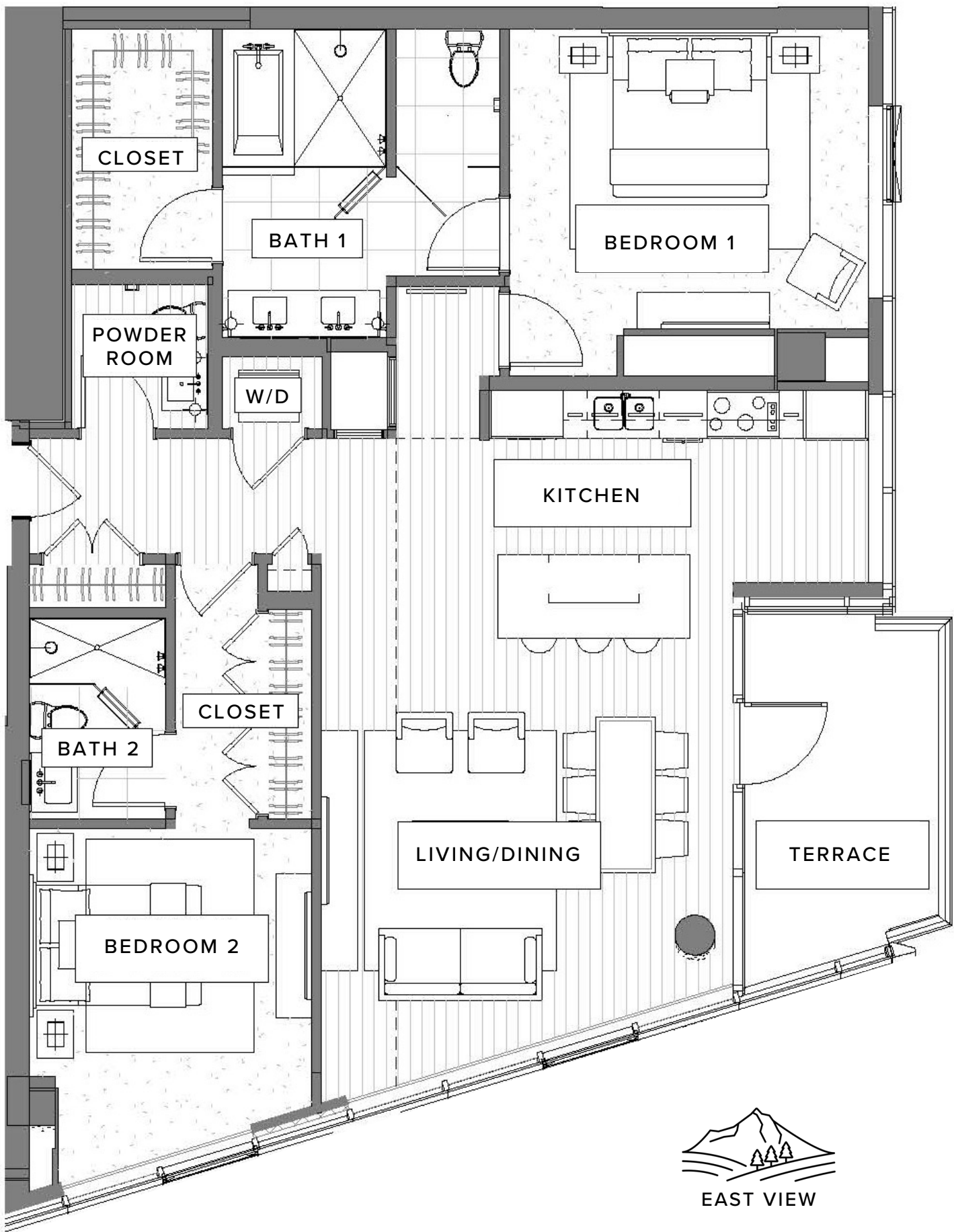
STANDOUT FEATURES

- Floor-to-ceiling windows with sweeping views of the sparkling Willamette River, downtown city skyline, and the majestic peaks of Mount St. Helens and Mt. Hood
- Modern kitchen with top-tier appliances
- Large entertaining island in kitchen with incredible mountain views
- Corner layout optimizes natural light throughout the entire Residence
- Open-plan kitchen/living area opens onto a large glass-walled corner terrace
- Spacious walk-in closet in primary bedroom
- Hidden stacking washer and dryer
- Includes one reserved, underground parking space

-  **COASTAL FINISH** (OPTION 1)
-  **MOUNTAIN FINISH** (OPTION 2)



Exact floor plan may vary. All information deemed reliable but not guaranteed.



The Ritz-Carlton Residences, Portland are not owned, sold or developed by The Ritz-Carlton Hotel Company, L.L.C. or its affiliates ("The Ritz-Carlton"). Ready Capital uses The Ritz-Carlton marks under a license from The Ritz-Carlton, which has not confirmed the accuracy of any of the statements or representations made herein. Any renderings and/or depictions are conceptual only and are for the convenience of reference. They should not be relied upon as representations, expressed or implied, or the final details of The Residences.