

05 BRIDGEVIEW SIGNATURE SUITE

2 BEDROOM / 2.5 BATH

This luxurious Residence with sweeping river, bridge, and mountain views features two bedrooms, two full baths, one half-bath, and private terrace.

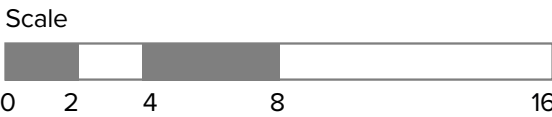
VIEW: PREMIUM NORTHWEST

STANDOUT FEATURES

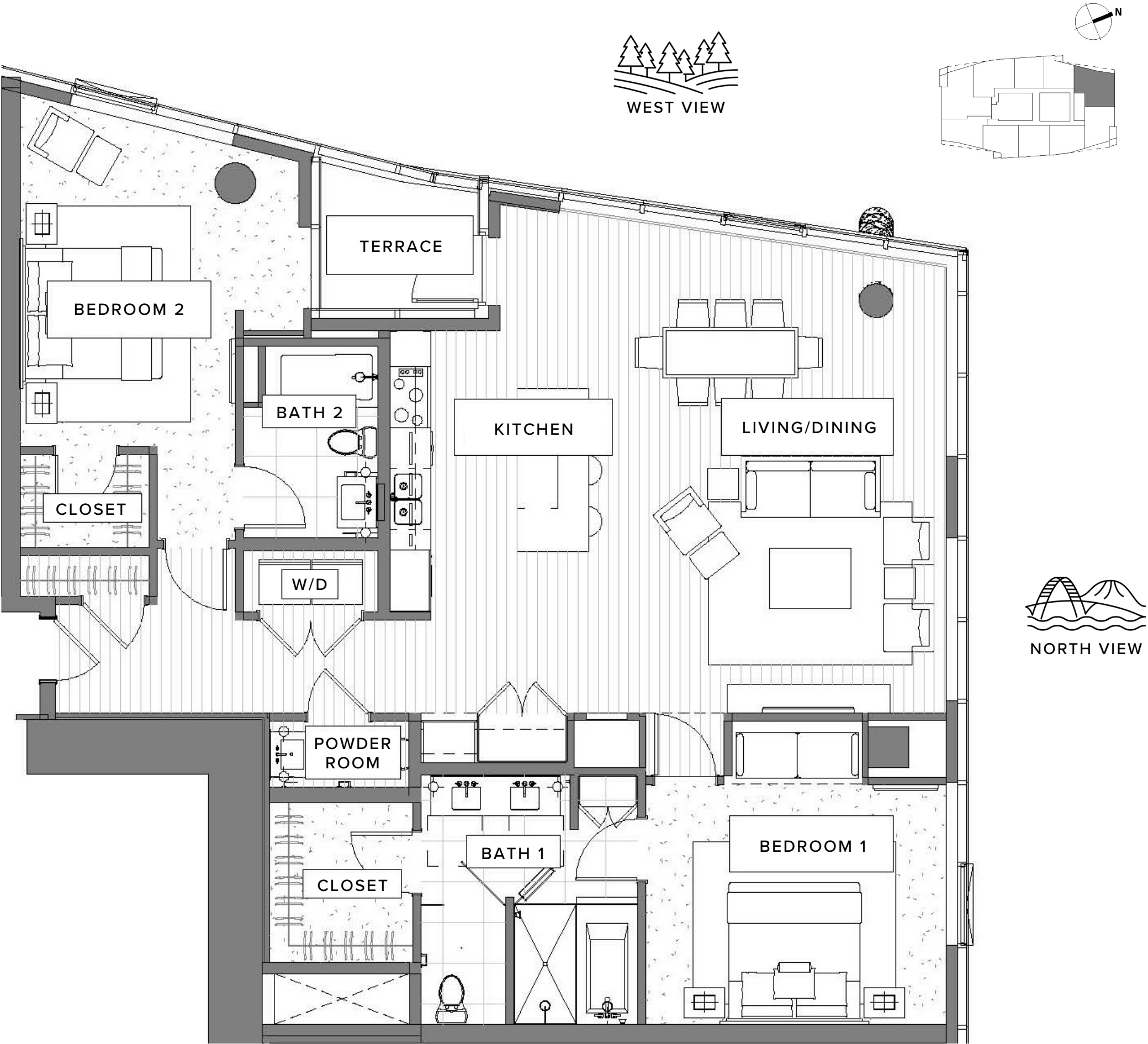
- Floor-to-ceiling windows with expansive views of the lush West Hills and Forest Park on one side and the sparkling Willamette River and spectacular Mount St. Helens on the other
- Modern kitchen with top-tier appliances
- Large entertaining island in kitchen
- Open-plan kitchen-living area opens onto a cozy glass-walled terrace
- Corner layout optimizes natural light throughout the entire Residence
- Spacious walk-in closet in primary bedroom
- Extended entry hallway creates showcase for artwork
- Hidden washer and dryer
- Includes one reserved, underground parking space

 **COASTAL FINISH** (OPTION 1)

 **MOUNTAIN FINISH** (OPTION 2)



Exact floor plan may vary. All information deemed reliable but not guaranteed.



The Ritz-Carlton Residences, Portland are not owned, sold or developed by The Ritz-Carlton Hotel Company, L.L.C. or its affiliates ("The Ritz-Carlton"). Ready Capital uses The Ritz-Carlton marks under a license from The Ritz-Carlton, which has not confirmed the accuracy of any of the statements or representations made herein. Any renderings and/or depictions are conceptual only and are for the convenience of reference. They should not be relied upon as representations, expressed or implied, or the final details of The Residences.