

04 FOREST PARK EXECUTIVE SUITE



1 BEDROOM / 1.5 BATH

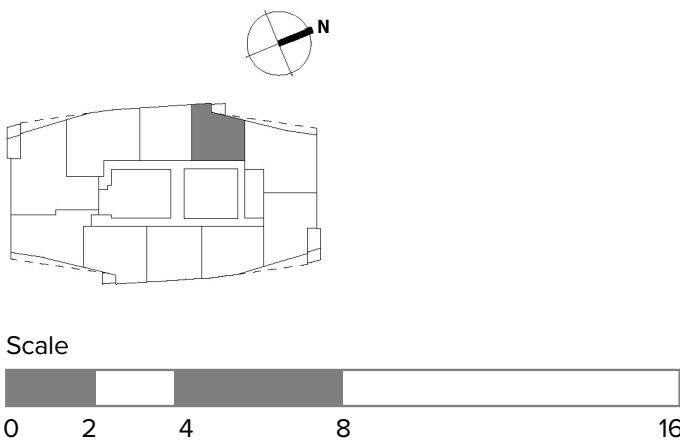
This stylish Residence with sweeping forested hillside, river, and mountain views features one bedroom, one full bath, one half-bath, and private terrace.

VIEW: WEST

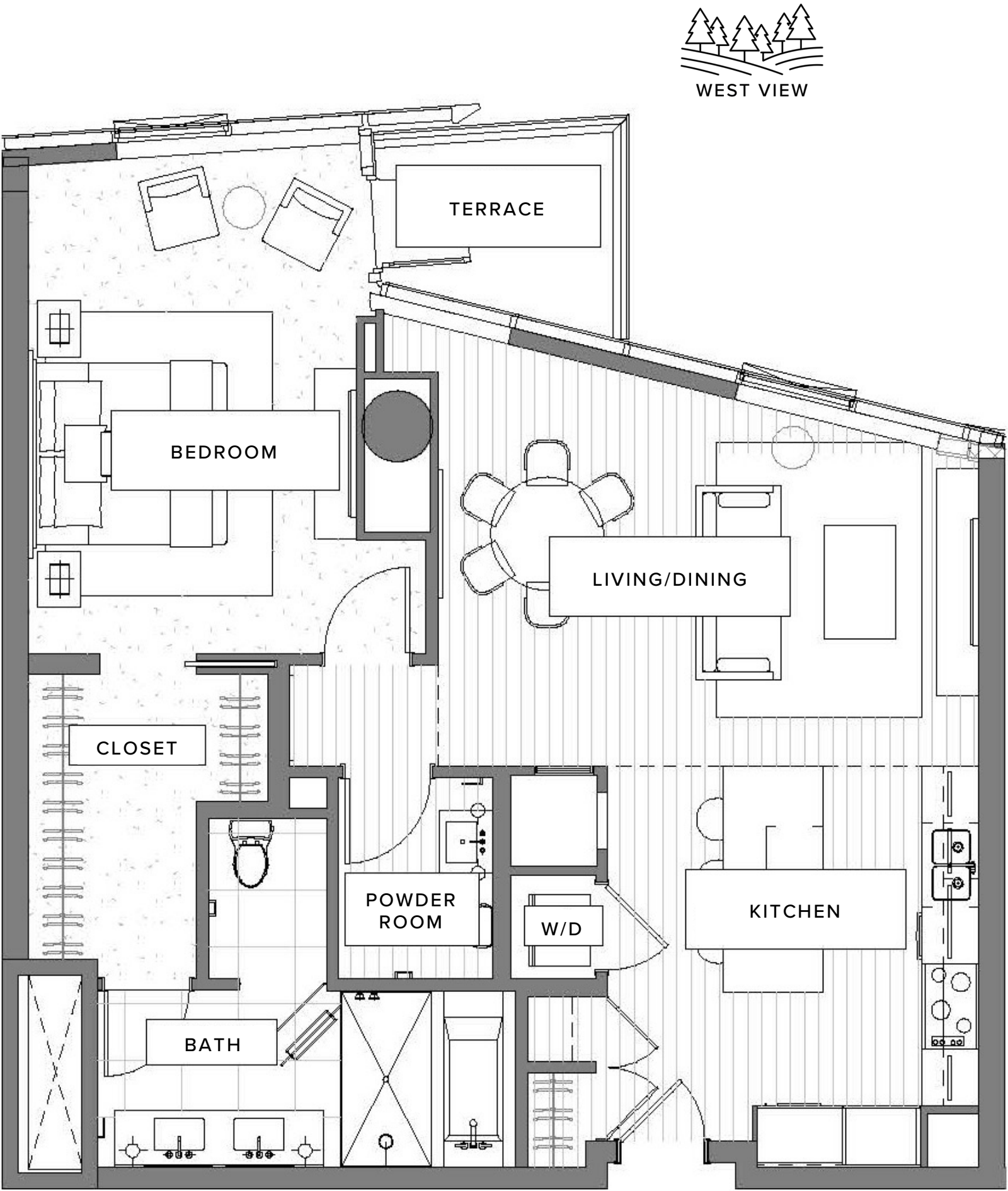
STANDOUT FEATURES

- Expansive views framed by Forest Park and the Willamette River
- Modern kitchen with top-tier appliances
- Large entertaining island in kitchen
- Open-plan kitchen/living area optimizes natural light throughout the Residence
- Glass-walled terrace off the bedroom offers spectacular views of the Pearl District skyline and Mount St. Helens
- Spacious closet in bedroom
- Hidden stacking washer and dryer
- Includes one reserved, underground parking space

-  **COASTAL FINISH** (OPTION 1)
-  **MOUNTAIN FINISH** (OPTION 2)



Exact floor plan may vary. All information deemed reliable but not guaranteed.



The Ritz-Carlton Residences, Portland are not owned, sold or developed by The Ritz-Carlton Hotel Company, L.L.C. or its affiliates ("The Ritz-Carlton"). Ready Capital uses The Ritz-Carlton marks under a license from The Ritz-Carlton, which has not confirmed the accuracy of any of the statements or representations made herein. Any renderings and/or depictions are conceptual only and are for the convenience of reference. They should not be relied upon as representations, expressed or implied, or the final details of The Residences.