

07 WAHKEENA PREMIUM RESIDENCE

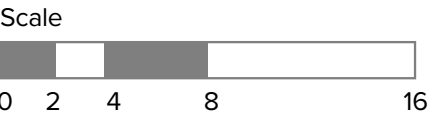
2 BEDROOM / 2.5 BATH

This spacious Premium Residence with spectacular Willamette River and Mt. Hood views features two bedrooms, two full baths, one half-bath, private office, and two terraces.

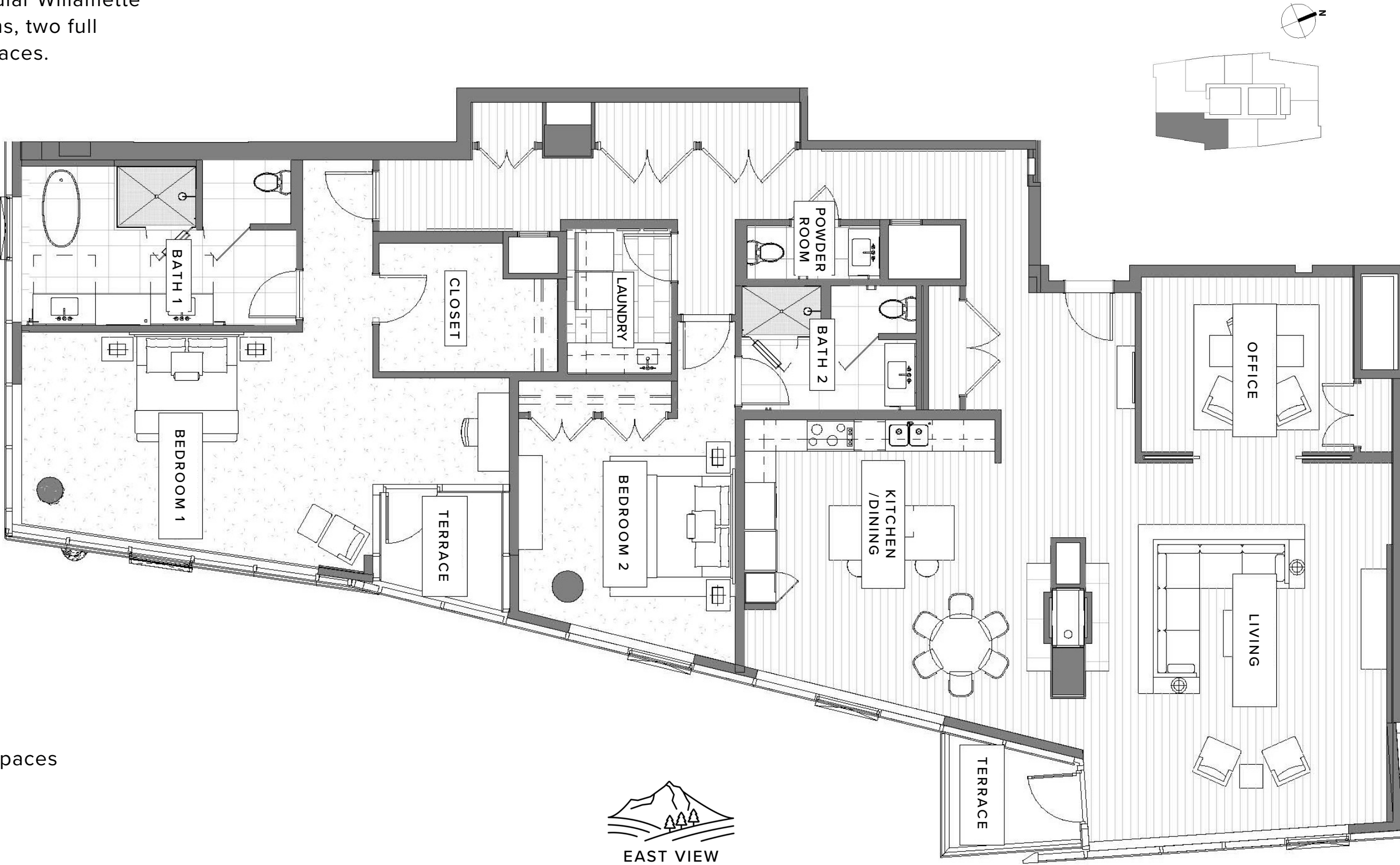
VIEW: PREMIUM SOUTHEAST

STANDOUT FEATURES

- Floor-to-ceiling windows with sweeping views of the sparkling Willamette River, lush Marquam Nature Park, downtown city skyline, and majestic Mt. Hood
- Modern kitchen with top-tier appliances
- Large entertaining island in kitchen
- Gas fireplace
- Corner layout optimizes natural light throughout the Residence
- Bright, airy living room opens onto a cozy glass-walled terrace
- Second terrace provides a private space adjoined to the primary bedroom
- Spacious walk-in closet in primary bedroom
- Bonus room that can be used as an office or den
- Full-sized laundry room
- Includes two reserved, underground parking spaces



Exact floor plan may vary. All information deemed reliable but not guaranteed.



The Ritz-Carlton Residences, Portland are not owned, sold or developed by The Ritz-Carlton Hotel Company, L.L.C. or its affiliates ("The Ritz-Carlton"). Ready Capital uses The Ritz-Carlton marks under a license from The Ritz-Carlton, which has not confirmed the accuracy of any of the statements or representations made herein.

Any renderings and/or depictions are conceptual only and are for the convenience of reference. They should not be relied upon as representations, expressed or implied, of the final details of The Residences.