

06 CITY LIGHTS PREMIUM RESIDENCE



1 BEDROOM / 1.5 BATH

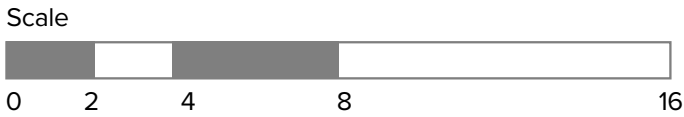
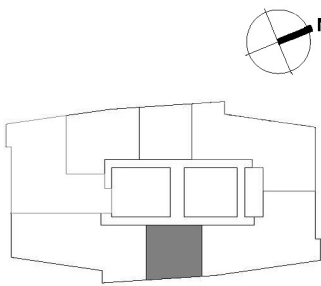
This elegant Premium Residence with spectacular Willamette River and Mt. Hood views features one bedroom, one full bath, one half-bath, and private terrace.

VIEW: PREMIUM EAST

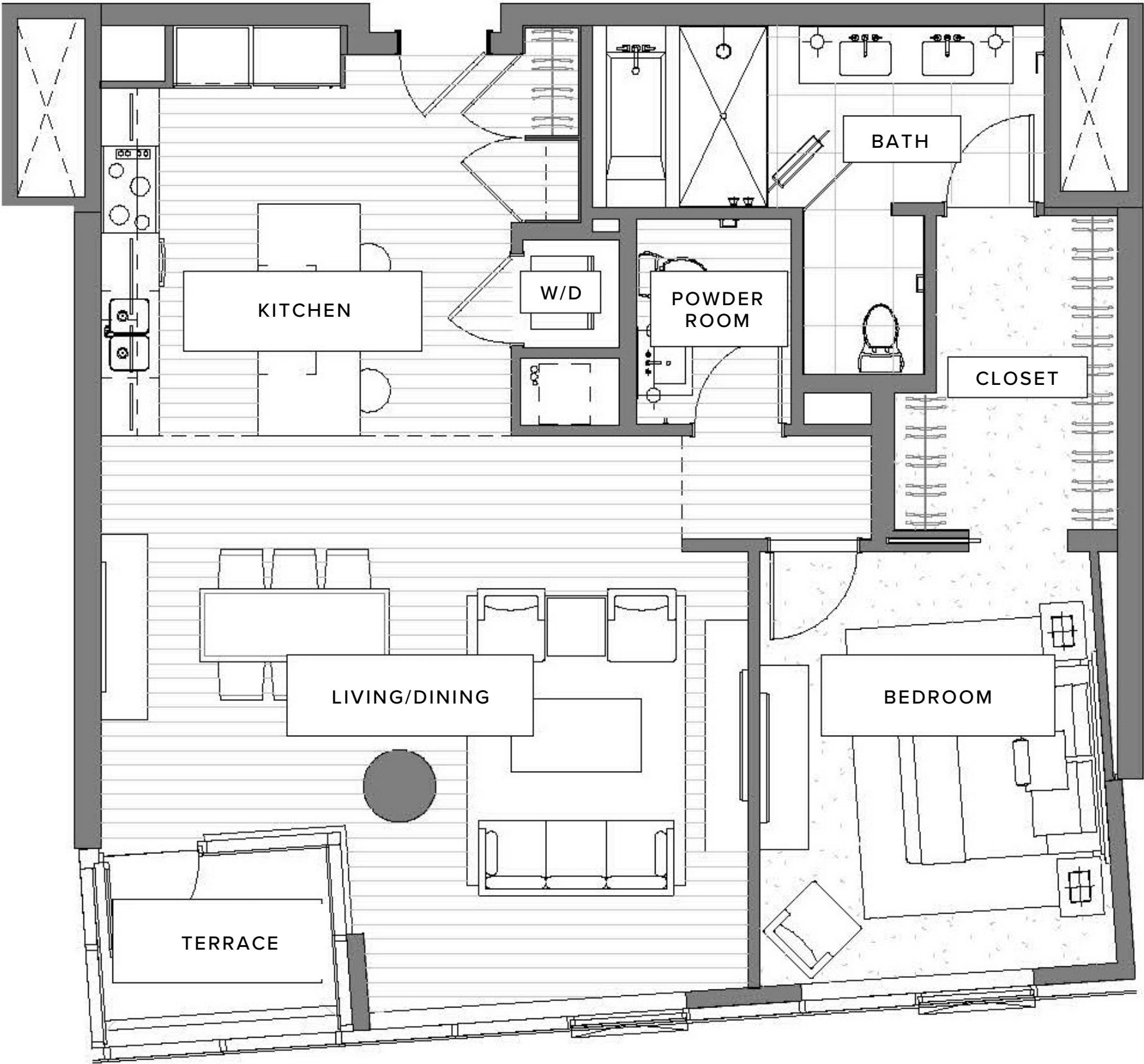
STANDOUT FEATURES

- Floor-to-ceiling windows with sweeping views of the sparkling Willamette River, downtown city skyline, and majestic Mt. Hood
- Modern kitchen with top-tier appliances
- Large entertaining island in kitchen
- Gas fireplace
- Bright, airy living area opens onto a cozy glass-walled terrace
- Spacious closet in bedroom
- Hidden stacking washer and dryer
- Includes one reserved, underground parking space

-  **FOREST FINISH** (OPTION 1)
-  **GLACIER FINISH** (OPTION 2)



Exact floor plan may vary. All information deemed reliable but not guaranteed.



The Ritz-Carlton Residences, Portland are not owned, sold or developed by The Ritz-Carlton Hotel Company, L.L.C. or its affiliates ("The Ritz-Carlton"). Ready Capital uses The Ritz-Carlton marks under a license from The Ritz-Carlton, which has not confirmed the accuracy of any of the statements or representations made herein. Any renderings and/or depictions are conceptual only and are for the convenience of reference. They should not be relied upon as representations, expressed or implied, or the final details of The Residences.