

05 METLAKO PREMIUM RESIDENCE

2 BEDROOM / 2.5 BATH

This spacious Premium Residence with spectacular views of the Willamette River and multiple Cascade peaks features two bedrooms, two full baths, one half-bath, a den/office, and two terraces.

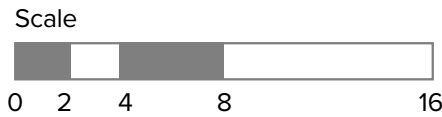
VIEW: PREMIUM NORTHEAST

STANDOUT FEATURES

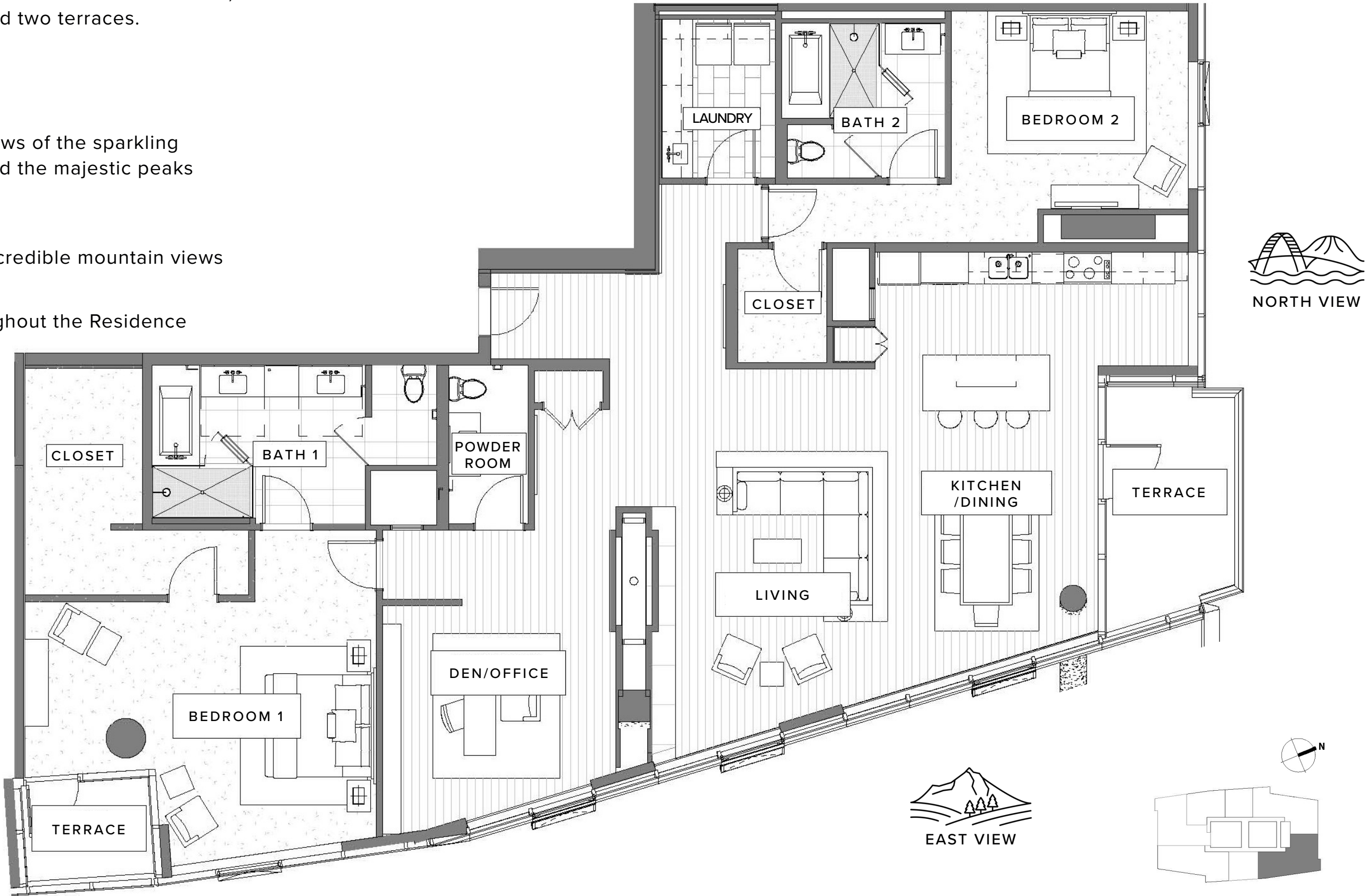
- Floor-to-ceiling windows with sweeping views of the sparkling Willamette River, downtown city skyline, and the majestic peaks of Mount St. Helens and Mt. Hood
- Modern kitchen with top-tier appliances
- Large entertaining island in kitchen with incredible mountain views
- Gas fireplace
- Corner layout optimizes natural light throughout the Residence
- Open-plan kitchen/living area opens onto a glass-walled corner terrace
- Second terrace provides a private space adjoined to the primary bedroom
- Spacious walk-in closet in primary bedroom
- Private bonus room that can be used as a study or den
- Full-sized laundry room
- Includes two reserved, underground parking spaces



GLACIER FINISH



Exact floor plan may vary. All information deemed reliable but not guaranteed.



The Ritz-Carlton Residences, Portland are not owned, sold or developed by The Ritz-Carlton Hotel Company, L.L.C. or its affiliates ("The Ritz-Carlton"). Ready Capital uses The Ritz-Carlton marks under a license from The Ritz-Carlton, which has not confirmed the accuracy of any of the statements or representations made herein. Any renderings and/or depictions are conceptual only and are for the convenience of reference. They should not be relied upon as representations, expressed or implied, of the final details of The Residences.