

3503 TAHOMA PENTHOUSE

3 BEDROOM / 3.5 BATH

The Tahoma Penthouse is considered the premier Penthouse in the new Ritz-Carlton Residences, Portland. Perched on the top floor and wrapping around the east, north, and west sides of the building, this spectacular home features 270 degrees of uninterrupted mountain, city, and river views.

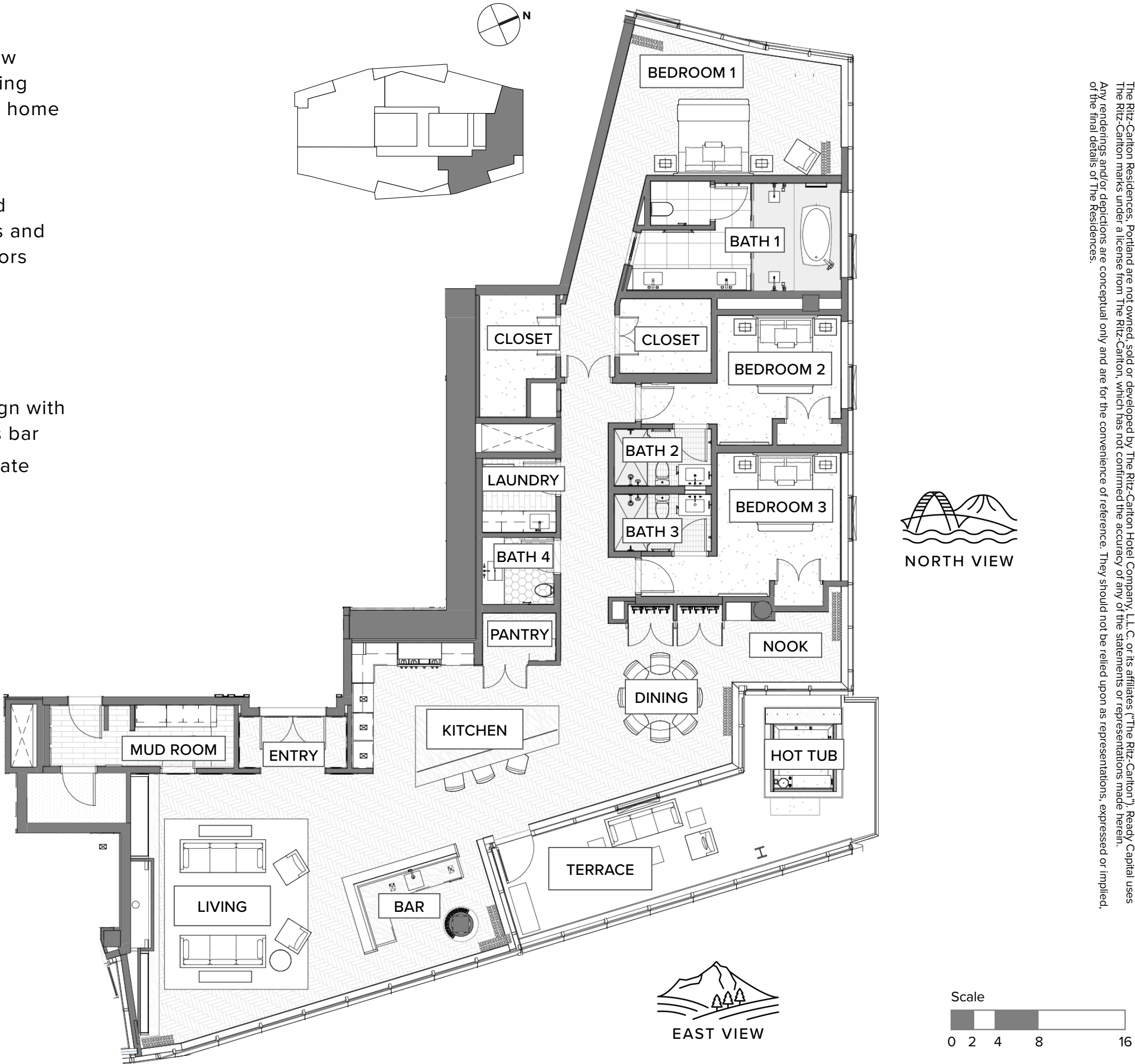
Innovation and contemporary design meet eclectic high style in this sophisticated Penthouse. Expansive interiors are defined by a polished style and the use of the highest quality materials and luxurious fixtures and fittings. No detail was left to chance as designer, artisans, and fabricators with impeccable standards created flawless results.

VIEW: PREMIUM NORTHEAST

STANDOUT FEATURES

- Interior details by Winn Winn Interiors include a monochromatic design with crystal accents and wainscot paneling, hidden doors, and a luxurious bar
- A custom hot tub on the terrace with spectacular views, the only private hot tub in the building
- Barrel ceiling entry
- 72” gas fireplace with cool touch technology
- Gourmet thermador appliances
- 5’ galley sink with dual faucets
- Integrated architectural lighting and smart system
- 14’ foot vaulted ceiling, double rain-head shower and 6’ freestanding soaking tub in primary bathroom
- Wind-protected balcony
- Gas outdoor fireplace hook up
- His and hers custom walk-in closets in primary bedroom
- 16’ vaulted ceiling and custom motorized draperies and sheers in primary bedroom
- Full-sized laundry room
- Includes two reserved, underground parking spaces

Exact floor plan may vary. All information deemed reliable but not guaranteed.



The Ritz-Carlton Residences, Portland are not owned, sold or developed by The Ritz-Carlton Hotel Company, L.L.C. or its affiliates ("The Ritz-Carlton"). Ready Capital uses The Ritz-Carlton marks under a license from The Ritz-Carlton, which has not confirmed the accuracy of any of the statements or representations made herein. Any renderings and/or depictions are conceptual only and are for the convenience of reference. They should not be relied upon as representations, expressed or implied, or the final details of The Residences.