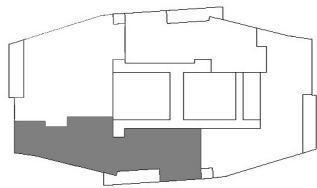
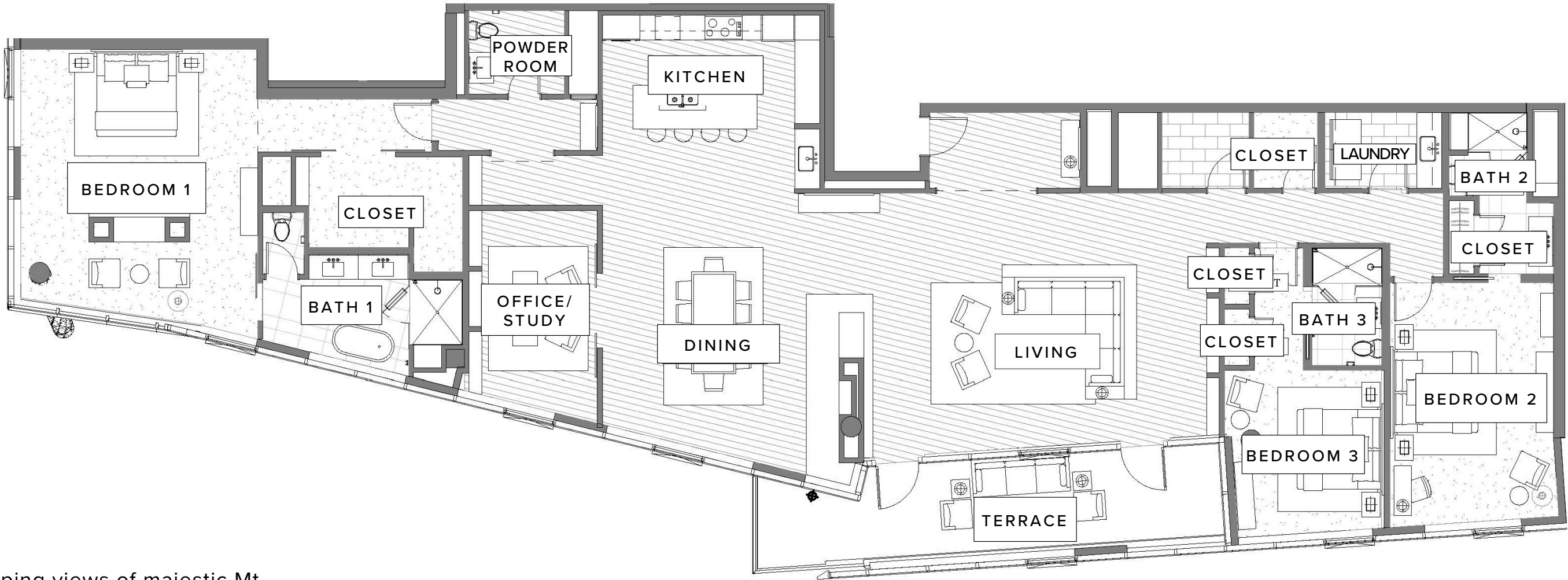


3404 WY'EAST PENTHOUSE

3 BEDROOM / 3.5 BATH

This elegant Penthouse with spectacular views of Mt. Hood and the Willamette River from a large private terrace features three bedrooms, three full baths, one half-bath, and secluded study.



VIEW: PREMIUM SOUTHEAST

STANDOUT FEATURES

- Floor-to-ceiling windows with sweeping views of majestic Mt. Hood, the sparkling Willamette River, lush Marquam Nature Park, downtown city skyline
- Open kitchen/dining layout optimizes natural light throughout
- Spacious living area opens onto an expansive glass-walled terrace
- Bonus room that can be used as a study or den
- Spacious walk-in closet in primary bedroom
- Full-sized laundry room
- Includes two reserved, underground parking spaces



Exact floor plan may vary. All information deemed reliable but not guaranteed.

The Ritz-Carlton Residences, Portland are not owned, sold or developed by The Ritz-Carlton Hotel Company, L.L.C. or its affiliates ("The Ritz-Carlton"). Ready Capital uses The Ritz-Carlton marks under a license from The Ritz-Carlton, which has not confirmed the accuracy of any of the statements or representations made herein. Any renderings and/or depictions are conceptual only and are for the convenience of reference. They should not be relied upon as representations, expressed or implied, of the final details of The Residences.