

# 3403 LOOWIT PENTHOUSE

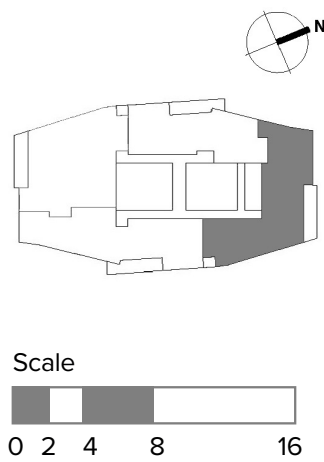
## 3 BEDROOM / 3.5 BATH

This spacious Penthouse with spectacular views of the Willamette River and multiple Cascade peaks from an expansive corner terrace features three bedrooms, three full baths, one half-bath, and private den.

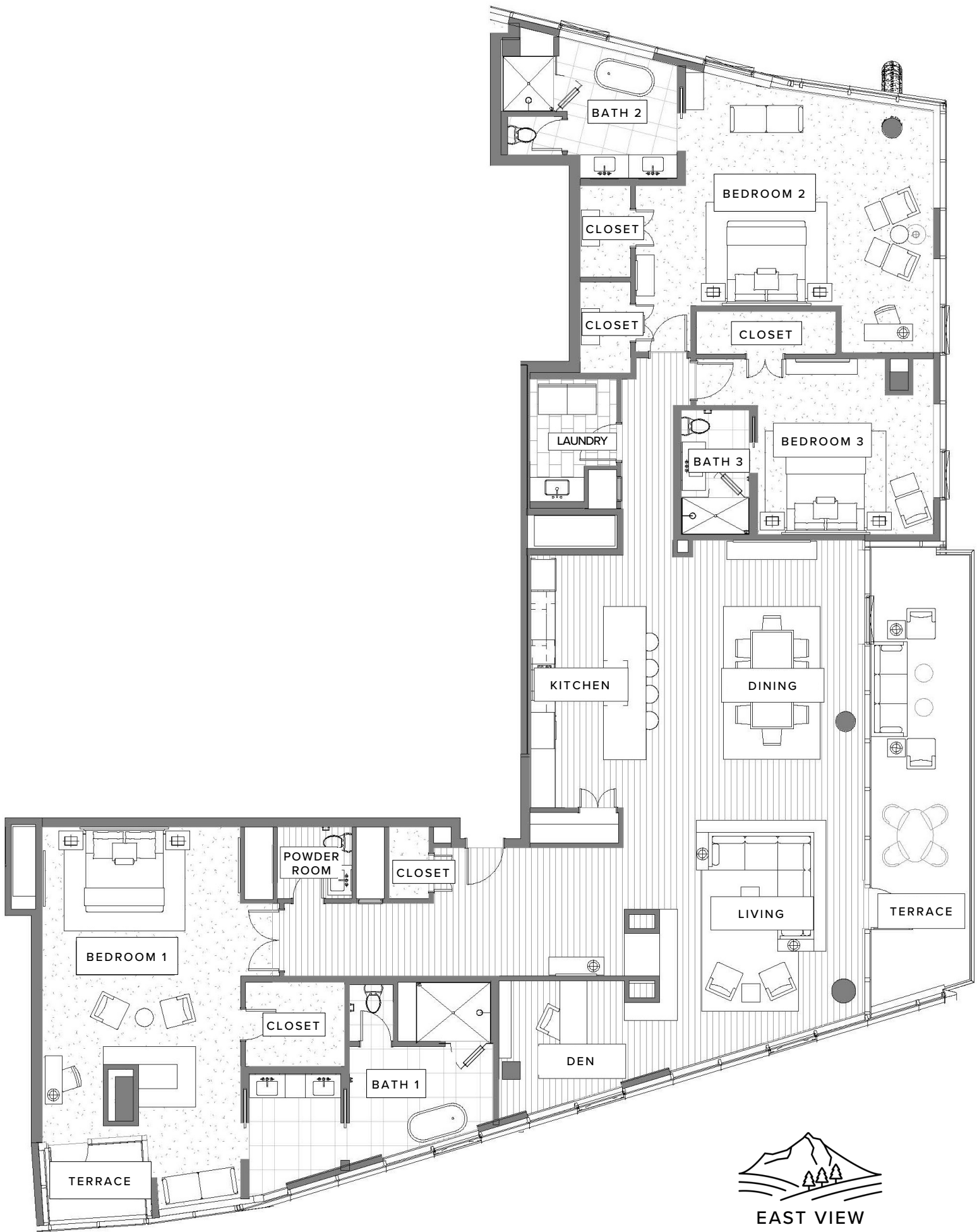
### VIEW: PREMIUM NORTHEAST

### STANDOUT FEATURES

- Floor-to-ceiling windows wrapping around the east, north, and west sides of the building provide 270° sweeping views of the sparkling Willamette River, downtown city skyline, and majestic peaks of Mount St. Helens and Mt. Hood
- Open-plan kitchen/living area opens onto an glass-walled corner terrace with uninterrupted mountain, city, and river views
- Corner layout optimizes natural light throughout
- Bonus room that can be used as a den or office
- Second smaller terrace provides a private outdoor space adjoined to the primary bedroom
- Walk-in closet in primary bedroom
- Full-sized laundry room
- Includes two reserved, underground parking spaces



Exact floor plan may vary. All information deemed reliable but not guaranteed.



The Ritz-Carlton Residences, Portland are not owned, sold or developed by The Ritz-Carlton Hotel Company, L.L.C. or its affiliates ("The Ritz-Carlton"). Ready Capital uses The Ritz-Carlton marks under a license from The Ritz-Carlton, which has not confirmed the accuracy of any of the statements or representations made herein. Any renderings and/or depictions are conceptual only and are for the convenience of reference. They should not be relied upon as representations, expressed or implied, or the final details of The Residences.