

3401 SAHALE PENTHOUSE

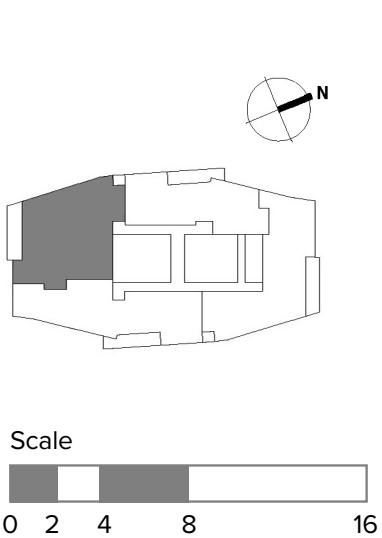
3 BEDROOM / 3.5 BATH

This spacious and luxurious Penthouse with views of the city skyline and verdant rolling hills features three bedrooms, three full baths, one half-bath, a private study, media room, and two terraces.

VIEW: PREMIUM SOUTHWEST

STANDOUT FEATURES

- Floor-to-ceiling windows with sweeping views of the sparkling Willamette River, South Waterfront, downtown city skyline, and lush Marquam Nature Park
- Bright, airy living area with abundant natural light
- Expansive glass-walled corner terrace with room for multiple seating areas
- Second smaller terrace provides a private outdoor space to the primary bedroom
- Private study adjoins the primary bedroom
- Separate media and entertainment room
- Spacious pantry opens from the kitchen
- Full-sized laundry room
- Includes two reserved, underground parking spaces



Exact floor plan may vary. All information deemed reliable but not guaranteed.



The Ritz-Carlton Residences, Portland are not owned, sold or developed by The Ritz-Carlton Hotel Company, L.L.C. or its affiliates ("The Ritz-Carlton"). Ready Capital uses The Ritz-Carlton marks under a license from The Ritz-Carlton, which has not confirmed the accuracy of any of the statements or representations made herein. Any renderings and/or depictions are conceptual only and are for the convenience of reference. They should not be relied upon as representations, expressed or implied, or the final details of The Residences.