



3 BEDROOM / 3.5 BATH

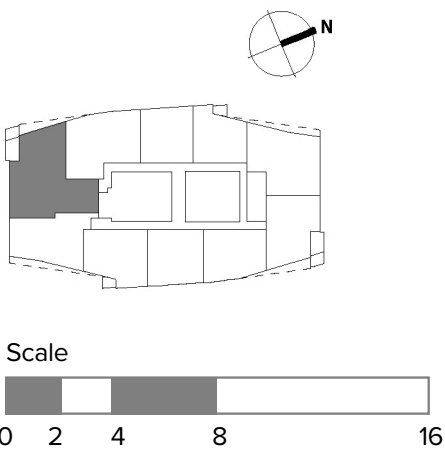
This elegant Residence with expansive city and forested hillside views features three bedrooms, three full baths, one half-bath, secluded den, and private terrace.

VIEW: SOUTHWEST

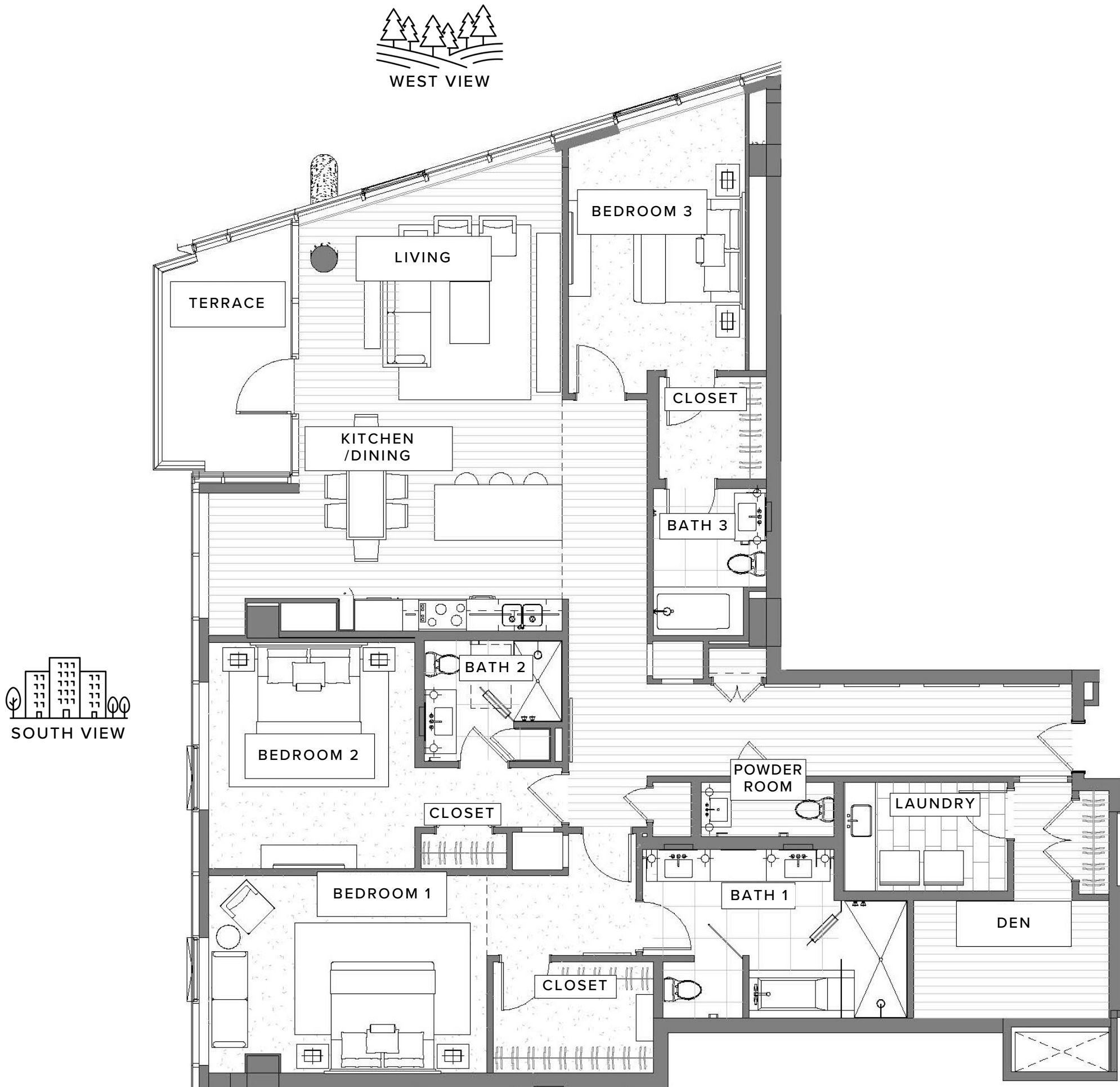
STANDOUT FEATURES

- Floor-to-ceiling windows with sweeping views of the downtown city skyline and lush Marquam Nature Park
- Modern kitchen with top-tier appliances
- Large entertaining island in kitchen
- Open-plan kitchen/living area opens onto a glass-walled corner terrace
- Bonus room that can be used as a den or private study
- Spacious walk-in closet in primary bedroom
- Extended entry hallway creates showcase for artwork
- Full-sized laundry room
- Includes one reserved, underground parking space

-  **COASTAL FINISH** (OPTION 1)
-  **MOUNTAIN FINISH** (OPTION 2)



Exact floor plan may vary. All information deemed reliable but not guaranteed.



The Ritz-Carlton Residences, Portland are not owned, sold or developed by The Ritz-Carlton Hotel Company, L.L.C. or its affiliates ("The Ritz-Carlton"). Ready Capital uses The Ritz-Carlton marks under a license from The Ritz-Carlton, which has not confirmed the accuracy of any of the statements or representations made herein. Any renderings and/or depictions are conceptual only and are for the convenience of reference. They should not be relied upon as representations, expressed or implied, or the final details of The Residences.