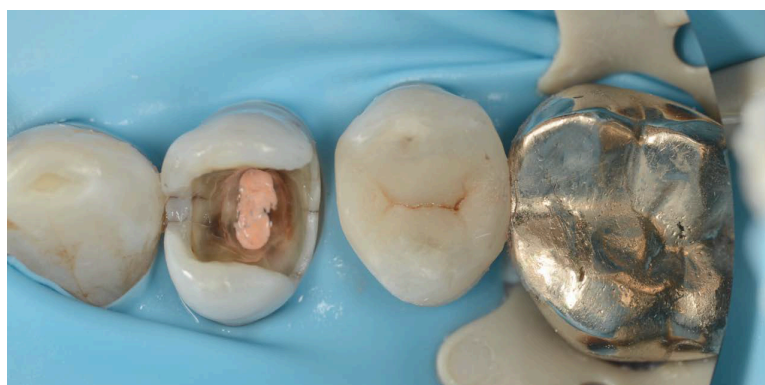


RESTORING NON-VITAL TEETH

WHEN TO USE POSTS, COMPOSITES, ONLAYS AND CROWNS



Everyone has heard that non-vital teeth are more “brittle” and they “fracture more easily”, but is this true ?

Should you use a Crown on them, or are Onlays or even direct composites better?

This 2-Day program will cover:

When to use a Cast Post or Fibre Post

When to do a Bonded Core

When to use Immediate Dentine Sealing (IDS)

Onlay Workshop

Practical Exercises will teach Attendees correct preparations for Porcelain and Gold Onlays, Direct Cores, and how to prepare and place a Post

Price: \$ 2990 + gst

Date: 4th & 5th April 2025

**Australian Dental
Centre of Excellence**

154 Ipswich Rd, Woolloongabba, QLD



What you will learn:

Important facts about non-vital teeth

When to use a post

Which post – fibre, ceramic or metal

Which teeth need crowns

When can an onlay suffice

How to prepare and cement porcelain onlays

How to prepare and cement gold onlays



Course starts at 9.30am so you can fly in that morning, stay only one night and finish on the 2nd day by 4pm to fly home



For more information or to register please visit www.ceodental.com.au

This course will provide a certificate of attendance for 14 hours Scientific CPD points.

CeoDental Seminars' courses are compliant with current DBA Guidelines on continuing professional development