

Brand Style Guide

Table of Contents

What is FlytBase	03	Color Usage	09
Who We Are	04	Typography Usage	10
Masterbrand Logo	05	Illustration Style	11
Co-Branding Guidelines	06	Putting it All Together	12
Logo Usage	07		

What is FlytBase

FlytBase is an enterprise-grade drone autonomy software platform to fully automate aerial data collection workflows. With little to no human intervention, users can conduct scheduled and repeatable BVLOS drone flights using docking stations, all controlled from their remote command centers.

By enabling apps and integrations and ensuring the highest data security standards, reliability, and scalability, the FlytBase platform lets users seamlessly integrate autonomous drones into enterprise workflows.

Who we are

At FlytBase, our mission is to lead the way in enabling drone autonomy for diverse commercial applications as the sky becomes increasingly busier with drones.



Masterbrand Logo

You can visit flytbase.com/brand-kit to download the latest logo files.



Alternate Logo



Co-Branding Guidelines

Do's



Don'ts



Logo Usage



*Add a color overlay of FlytBase Black or FlytBase White while using an image as a background.

Logo Usage



Don't use motif above wordmark



Don't rotate or flip the lockup



Don't use wordmark by itself



Don't add any effects on the lockup



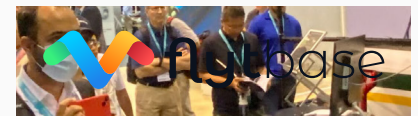
Don't edit or use your own colors



Don't adjust or edit the spacing



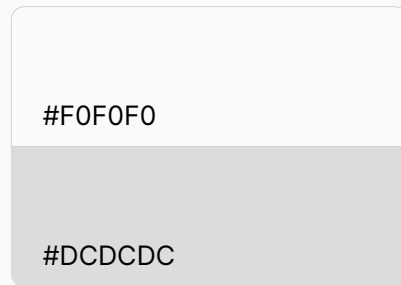
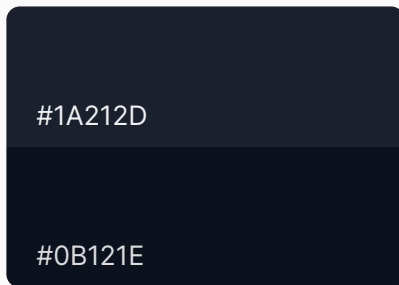
Don't use same gradient as of the logo for background



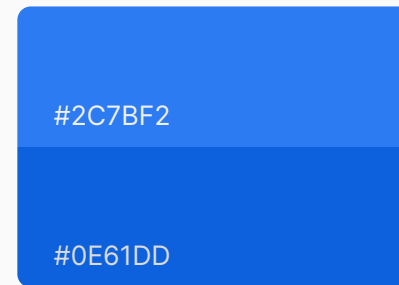
Don't use on any crowded background

Color Usage

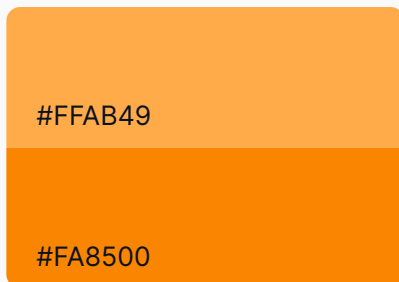
Primary Colors



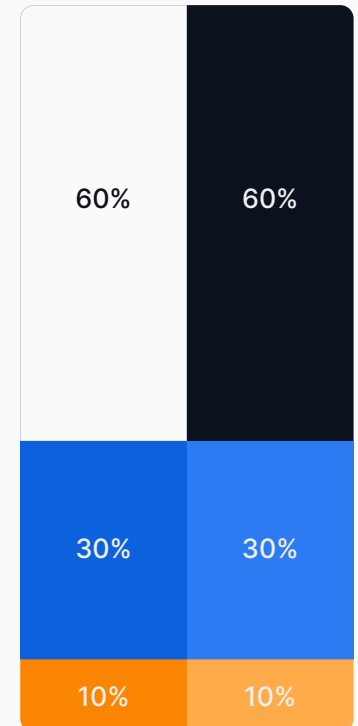
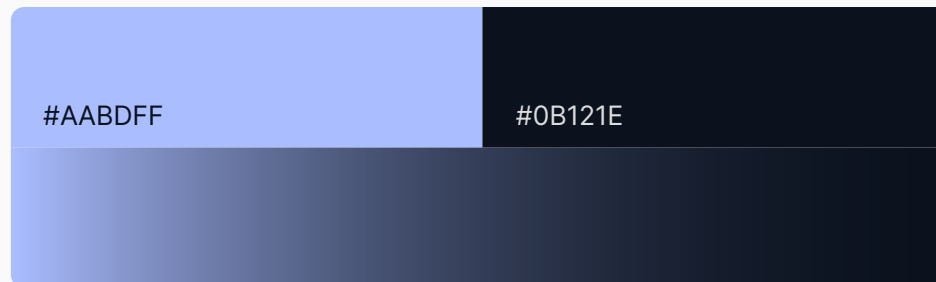
Secondary Color



Accent Color



Gradient



Typography Usage

Inter

ABCDEFGHIJKLMNOPQRSTUVWXYZ
abcdefghijklmnopqrstuvwxyz
0123456789

Inter Thin

Inter Extralight

Inter Light

Inter Regular

Inter Medium

Inter Semibold

Inter Bold

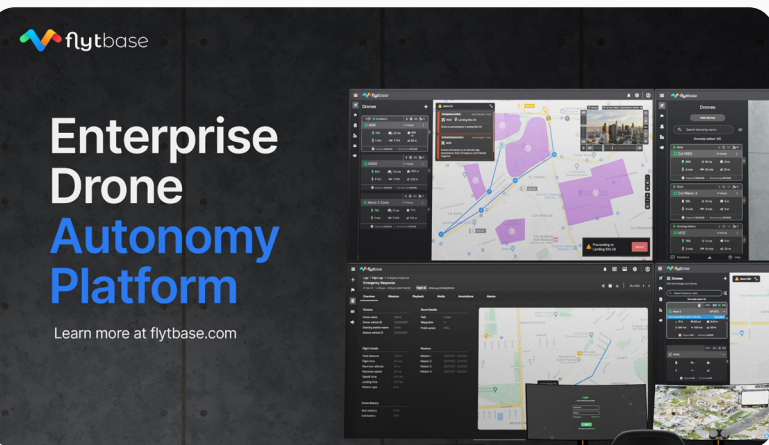
Inter Extrabold

Inter Black

Illustration Style



Putting it All Together



Thank You!

