

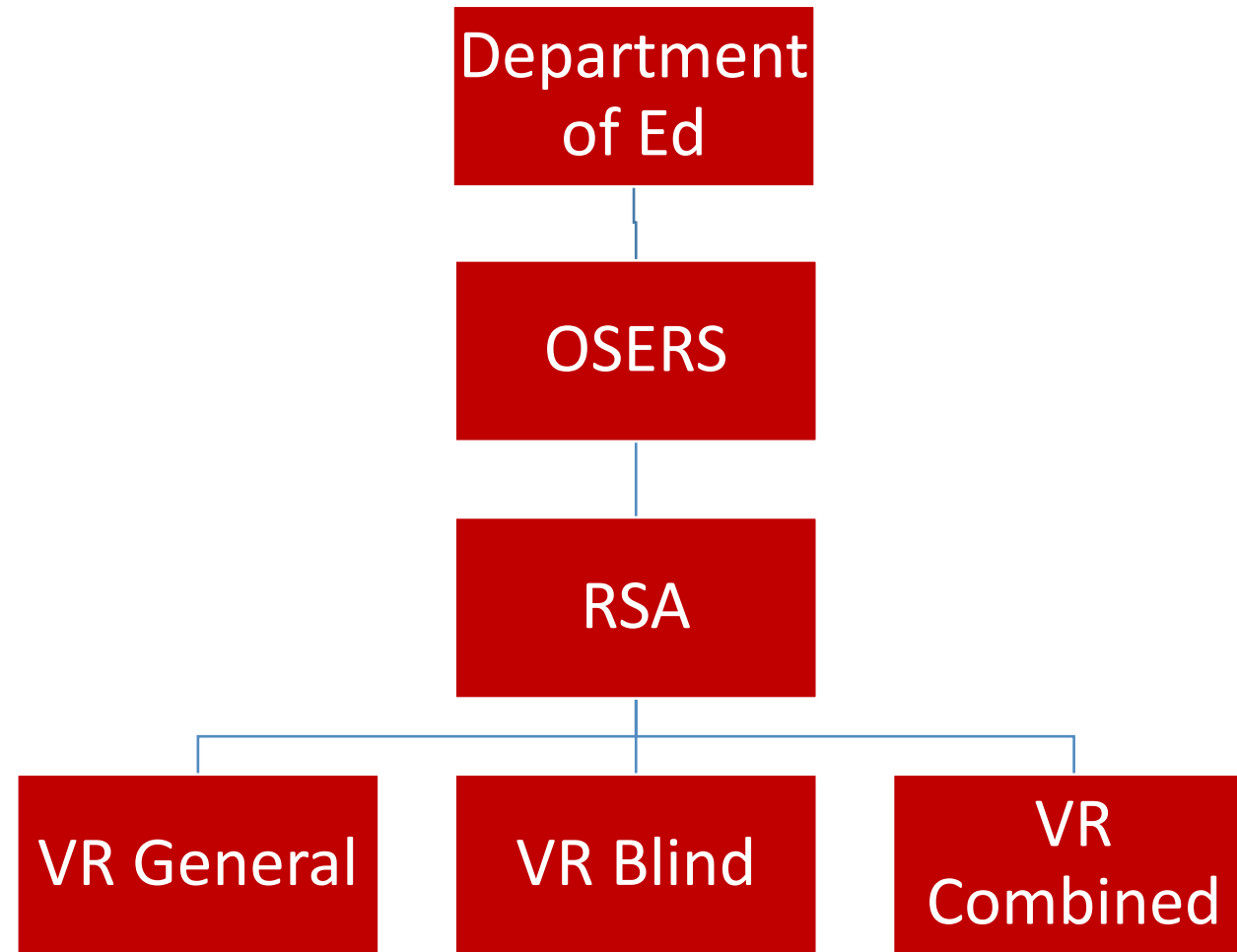
State Plan Modification & the SRC

Presented by:

Kerri Fradette, CT SRC Liaison, NCSRC Vice President

Shelby Satko, WA Executive Director SRC, NCSRC President





Federal/State Structure



Regulations

The Workforce Innovation and Opportunity Act (WIOA) Under Title I, requires each state to submit a Unified or Combined State Plan outlining their workforce development strategies and vision of, and goals for a four-year period. States can choose between Unified and Combined State Plan depending on the range of programs they want to integrate. This is done every 4 years, and a modification to the state plan every 2 years.

What is the purpose?



The Unified and Combined State Plans serve as 4-year action plans to develop, align, and integrate the State's systems and provide a platform to achieve the State's vision and strategic and operational goals. A Unified or Combined State Plan is intended to:

1. Title I – adult, dislocated worker and youth programs
2. Title II – Adult Education and Family Literacy Act (AEFLA)
3. Title III – Wagner-Peyser Act Employment Services
4. Title IV- Vocational Rehabilitation (VR) Services

Unified State Plan



Key Characteristics:

- **Required for every state**
- **Aligns the four core programs under a single statewide strategy**
- **Easier to manage with few partners**
- **Focused scope- primarily on employment, training, and education**

Unified State Plan



A combined state plan include the four WIOA core programs plus one or more optional partner programs, such as:

Perkins Career and Technical Education (CTE)

Temporary Assistance for Needy Families (TANF)

Supplemental Nutrition Assistance Program (SNAP) Employment & Training

Community Services Block Grant (CSBG)

Senior Community Services Employment Program (SCSEP)

Trade Adjustment Assistance (TAA)

Jobs for Veterans State Grants (JVSG)

Combined State Plan



Key Characteristics:

Broader integration across workforce and human services programs

Encourages stronger coordination among partner agencies

Promotes streamlined services for participants accessing multiple programs

More complex to manage but potentially more impactful

Combined State Plan



Rehab Act Mandates: Unified State Plan

Advise & assist in the preparation of the State Plan portion of the Unified State Plan & Amendments.

Include summary of SRC input in State Plan-Formerly Attachment 4.2(c).

Jointly conduct Statewide Needs Assessment every 3 years

Jointly develop, agree to & review annually VR agency goals & priorities.

Review & comment on CSPD

Facilitating strong partnerships between the SRC's and VR agencies to ensure compliance with Rehab act of 1973, amended 2014

Providing resources and examples of SRC bylaws, operating procedures, and monitoring preparation to support the state's workforce development system

Ensuring alignment of the workforce development system's six core programs, requiring unified strategic planning.

These are crucial to the effective implementation of the WIOA state and overall success
4 year action plan

Provide comments during the development of the VR Services Portion of the [WIOA Unified or Combined State Plan](#)

Develop and review State goals and priorities;

Overview of SRC Responsibilities



Group Table Activity:

How is your “Summary of SRC input” to the State Plan developed?

Where do your recommendations come from?

How do you partner with the VR agency in the development of the CSNA?

Is it done over 3-years or all in the third year?

Group Table Activity



Develop a Process for Providing SRC Input

Assign State Plan Responsibility to one of your Committees

Have an agency liaison assigned to the committee

Work on it year-round not just at the last minute

Report to full SRC at regular meetings

Develop a schedule with timelines for input and approval

Providing SRC Input



Questions? Other things to share?

Questions?

