



July 2025

Shell

Smart Facade Management for Modern Portfolios

A new feature that brings structure, visibility, and safety to exterior cleaning operations.



Introduction

A new addition to the Pego Universe

The Shell is a new layer of intelligence that brings transparency, structure, and full oversight to exterior building maintenance.

Facade cleaning is one of the most operationally risky and opaque services in facilities management. Often carried out by specialist subcontractors and executed at height, it lacks the real-time visibility, safety assurance, and documentation expected in modern property operations.

The Shell solves that. It digitises facade cleaning workflows, tracks subcontractor activity live, and gives facilities teams the power to manage exterior services with the same control they have inside the building.



Overview

Shell gives you full-spectrum control

Pego transforms your building exterior into a dynamic digital twin, which becomes the centrepiece of your dashboard - where you can seamlessly plan, monitor and manage all facade operations with total clarity and control.

What you can do with Shell:

Digitally schedule facade cleans

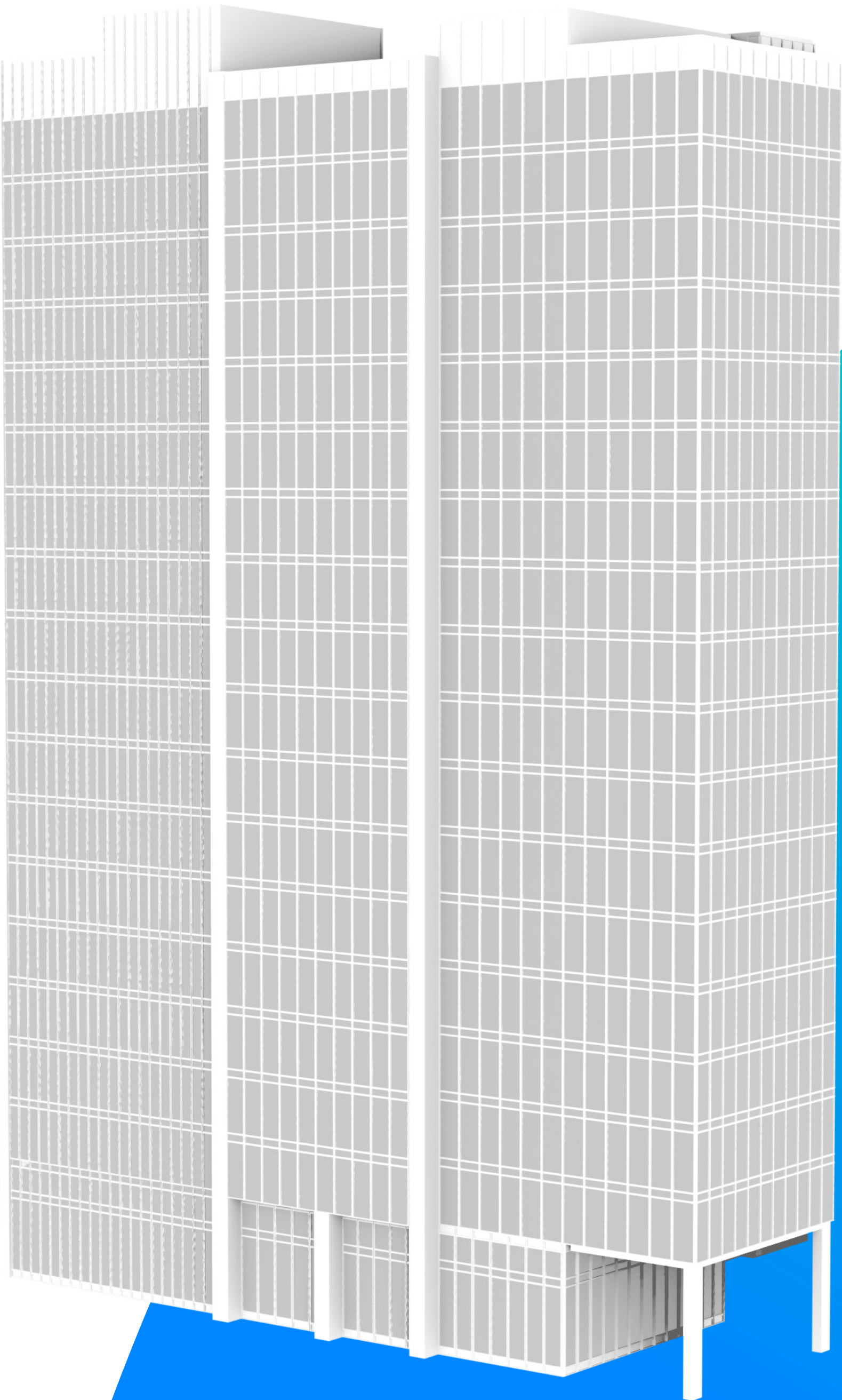
Assign zones, elevations, and frequency based on building layout, seasons, and service agreements.

Track subcontractor crews in real time

View active work zones, crew locations, and duration of tasks during operations.

Capture every clean and inspection digitally

Generate a complete log of service activity, including photographic evidence and timestamps.



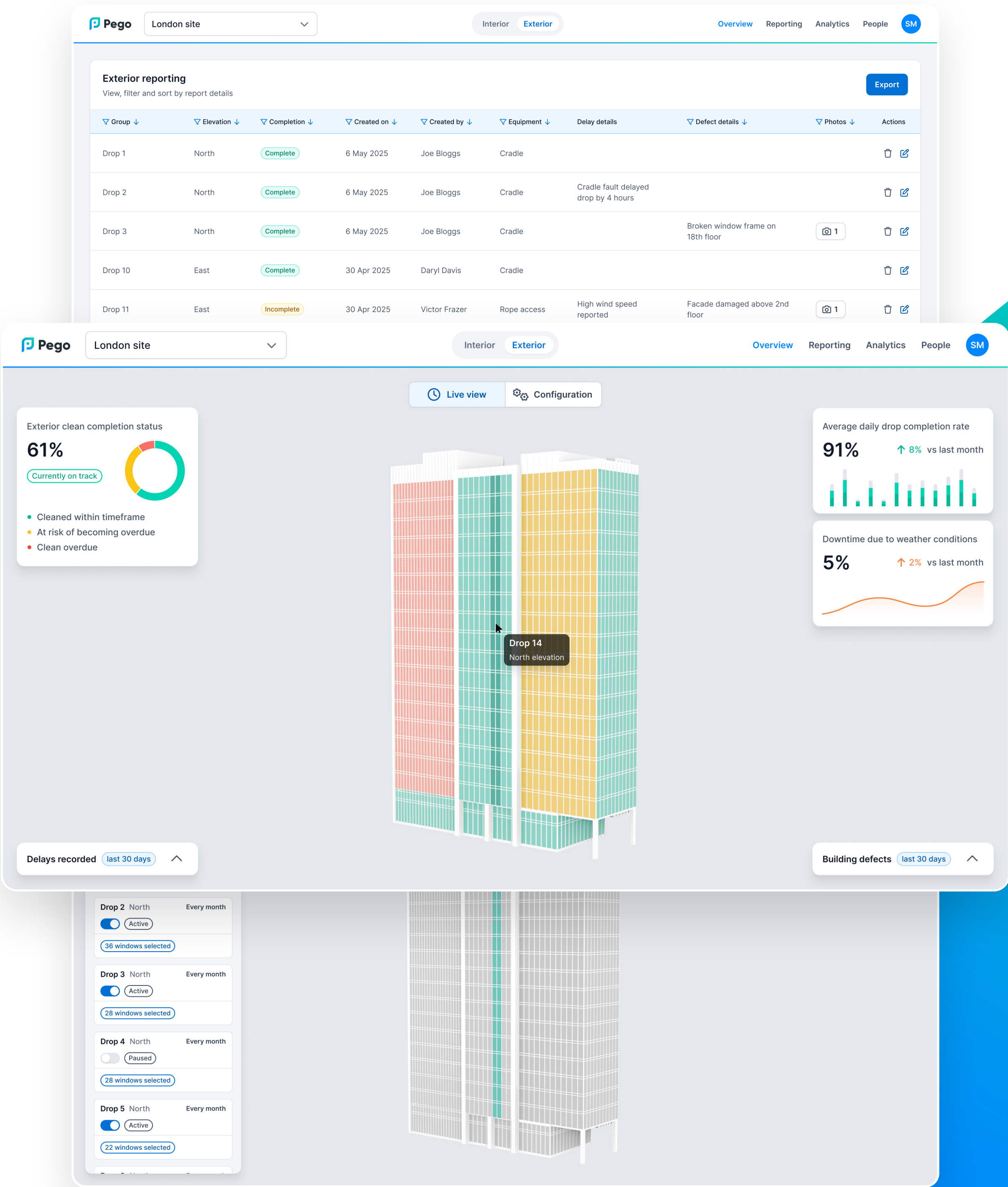
Dashboard

Command and clarity for every elevation.

Shell’s dashboard is built for operations leads and facilities managers who need fast, accurate insights.

From the dashboard, you can:

- View a digital twin of each building with facade zones mapped
- Check upcoming and completed cleans at a glance
- Track live operations and active crews during service windows
- Receive alerts for access anomalies, overdue tasks, or reported defects
- Generate client-ready reports with one click



Mobile App

The Shell on site: clear guidance, zero friction.

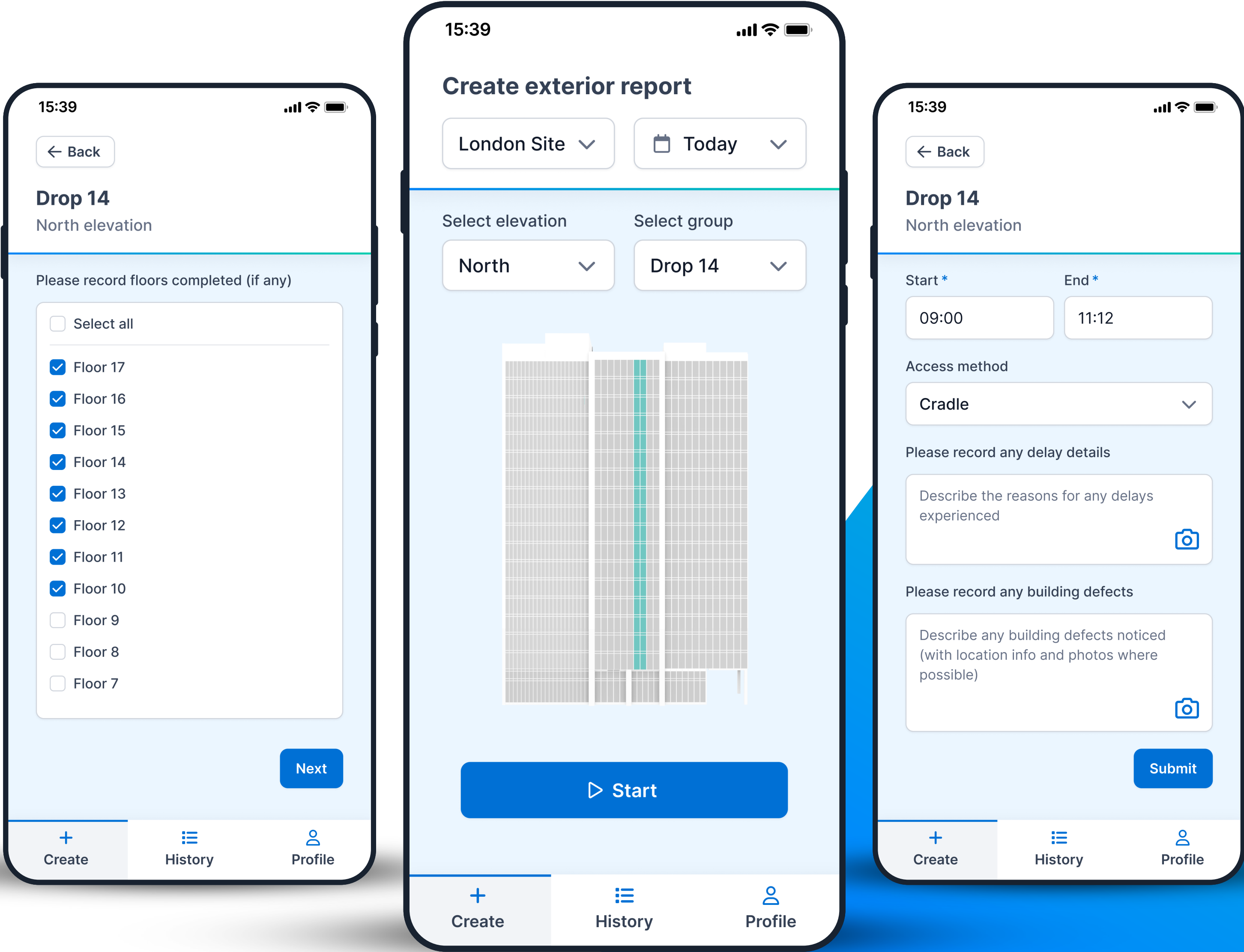
Shell equips subcontractor teams and internal supervisors with tools for real-time updates and safe operations on the ground.

On the mobile app, teams can:

- View and create records for all drops on site
- Log start and end times with photographic proof
- Report hazards, delays, or variations instantly

Operatives gain structure and accountability.

Managers gain visibility without needing to be on-site.



The Benefits

Smarter facade operations, built into the Pego platform

With Shell, exterior maintenance becomes a managed and measurable process.

Benefits include:

Instant Client Reporting

Create and share engaging, detailed reports on your progress and the state of the building - or allow clients to interact directly with the digital twin for full transparency.

Full Transparency

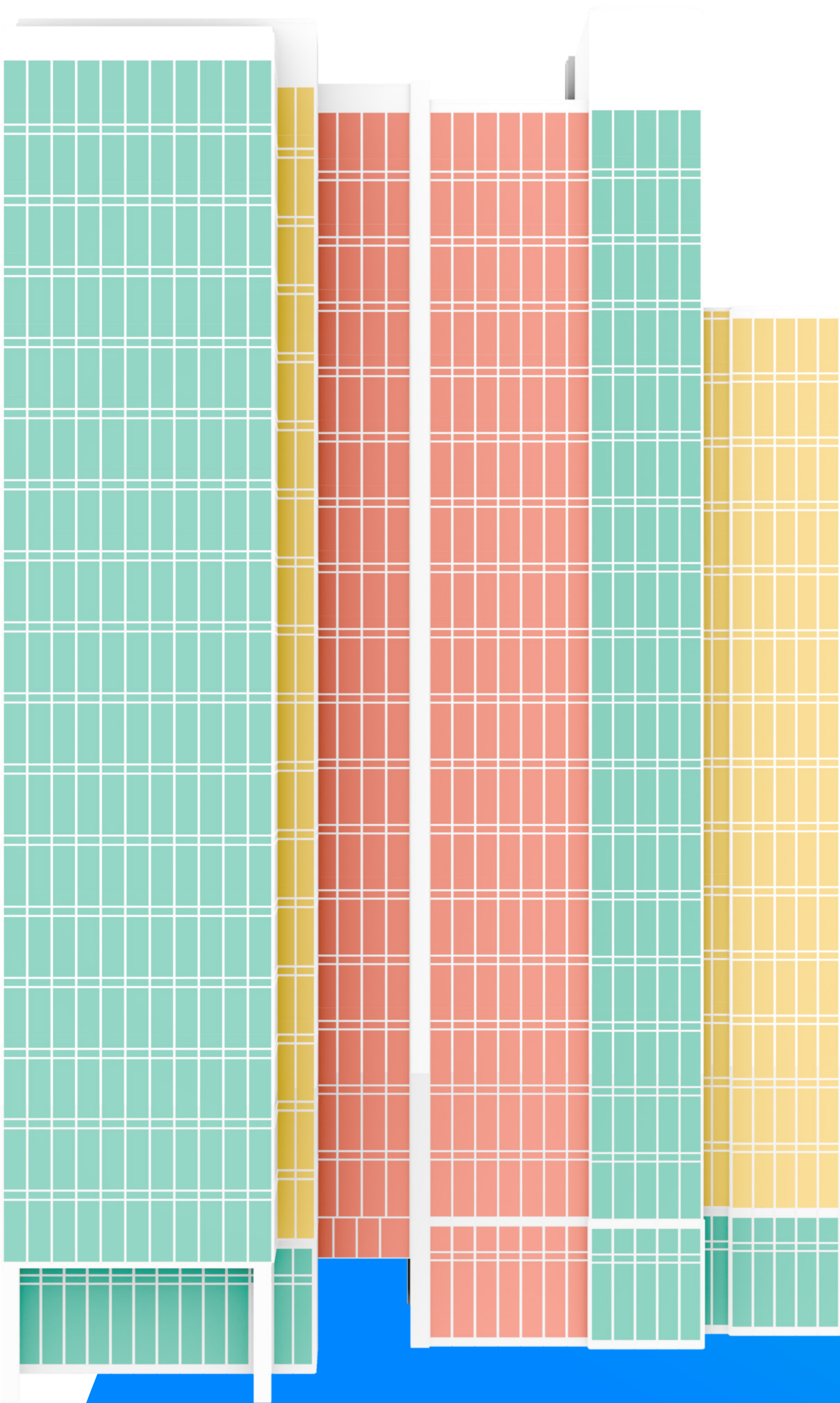
Access real-time data and historical records for every clean. Improve accountability.

Contractor Oversight

Monitor SLA performance with automated logs and timestamped activity records.

Platform Integration

The Shell works seamlessly with your existing Pego solutions unifying interior and exterior operations on a single platform.





Empowering people with the tools to do better, with less.

contact@pego.co.uk
+44 (0)20 8078 2112
Tunbridge Wells, England

www.pego.io

