

📷 united_for_care

☎ 1300 405 260

✉ info@unitedforcare.com.au

🌐 unitedforcare.com.au

UNITED
FOR CARE

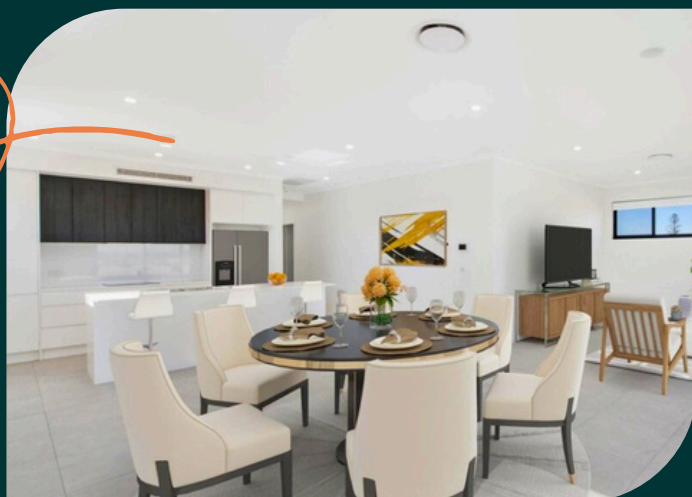


Swansea

Now Available

To schedule a tour
phone our team on:

1300 405 260



Swansea

Discover our new Supported Independent Living (SIL) coastal Vertical Village in Swansea! Just moments from Quinn Park, Swansea wharf, local shops and cafes, our fully-contained studio apartments provide all the comforts of modern living in a stunning community environment.

Designed for those seeking independence and support, our Swansea Vertical Village offers coastal convenience at your doorstep, with options for independent living with drop-in support or 24/7 on-site support.

Key features include:

- Fully contained: each apartment comes with its own kitchenette and bathroom, making it the perfect space for independent living.
- Convenient location: the Vertical Village is moments from Swansea Swim Centre, local supermarkets, parks and amenities.
- Indoor and outdoor communal spaces, perfect for socialising and dining.

Features



Moments to
local
waterways



Quinn Park
nearby



Close to medical
services



Close to cafes
and shops



Communal
Area



Wifi
Internet

