

PCMH Quality of Care Indicators

IMMUNIZATIONS



% of patients
(turning the age of 2)
who were
fully immunized

19.1%

GOAL: 38.2%

% of patients
(turning the age of 13)
who received Tdap,
HPV, and
meningococcal

30.8%

GOAL: 36.7%

% of patients
(18 and over) who
were immunized
with Tdap vaccine
in the last 10 years

N/A%

GOAL: 52.6%

% of patients
(18 and over) who
were immunized
with Flu vaccine
each flu season.

53.1%

GOAL: 35.0%

PREVENTATIVE CARE

**GOAL
76.5%**

N/A

% of patients ages 0-17 who had a medical visit in the last 1 year

% of patients ages 18+ who had a medical visit in the last 1 year

N/A

**GOAL
76.5%**

**GOAL
73.13%**

81%

% of patients who had at least one lead screening by their second birthday

% of patients ages 0-15 months who had a well child in the last 1 year

N/A

**GOAL
54.9%**

**GOAL
70.7%**

N/A

% of patients ages 15-30 months who had a well child in the last 1 year

% of patients ages 3-21 who had a well child in the last 1 year

68.3%

**GOAL
45.3%**

**GOAL
70.1%**

N/A

% of patients ages 3-17 who had a documented BMI percentile & counseling on nutrition or a referral for education in the last 1 year

% of patients ages 3-17 who had a documented BMI percentile & counseling for physical activity or a referral for education in the last 1 year

N/A

**GOAL
66.2%**

**GOAL
65.1%**

71.5%

% patients ages 12 and older who were screened for depression and if positive, had a follow-up plan documented since Jan 1st

% of patients ages 15 to 65 will be screened for HIV at least once

80.2%

**GOAL
55.1%**

**GOAL
54.0%**

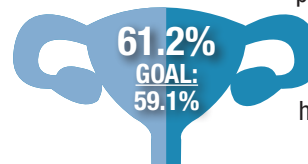
51.1%

% of patients who received one or more screenings for colorectal cancer

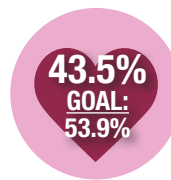
WOMEN'S HEALTH



% of female patients ages 16-24 who are sexually active have a chlamydia screening every 12 months



% of female patients ages 21-64 have a pap test every 3 years
Ages 30-64 have a pap test with HPV (co-test) every 5 years



% of female patients ages 50-74 have a mammogram in the last 2 years

PATIENT SATISFACTION



Patient Satisfaction
& Experience Survey results

97.9

**MEAN
SCORE**

CHRONIC DISEASE MANAGEMENT

% of patients ages 18-75 w/DM dx, who had a HbA1c Test completed in the last year

97.8%

GOAL: 88.6%

% of patients ages 18-75, w/DM dx, whose HbA1c < 9% at the time of the last reading in the last year

72.9%

GOAL: 52.0%

% of patients ages 18-75 w/DM who received a retinal eye exam in the last 1 year

31.3%

GOAL: 62.0%

% of pts ages 18-75 w/DM who received a foot exam in the last 1 year

64.2%

GOAL: 50.3%

% of patients ages 18-75 w/DM who received nephropathy screening or monitoring test done during the last 1 year

76.5%

GOAL: 88.0%

% of patients ages 18-85 w/HTN whose last blood pressure (BP) is <140/90 in the last 1 year

69.4%

GOAL: 55.4%

% of patients with a diagnosis of CVD or at risk for CVD, taking a statin medication to reduce their cholesterol and risk of heart attack and stroke

88.7%

GOAL: 77.6%

% of patients with a diagnosis of (IVD) or a risk of IVD take aspirin or an antiplatelet medication to lower their risk of heart attack or stroke

92.9%

GOAL: 81.5%

PCMH Quality of Care Indicators

IMMUNIZATIONS



% of patients
(turning the age of 2)
who were
fully immunized

80%

GOAL: 38.2%

% of patients
(turning the age of 13)
who received Tdap,
HPV, and
meningococcal

58.3%

GOAL: 36.7%

% of patients
(18 and over) who
were immunized
with Tdap vaccine
in the last 10 years

N/A

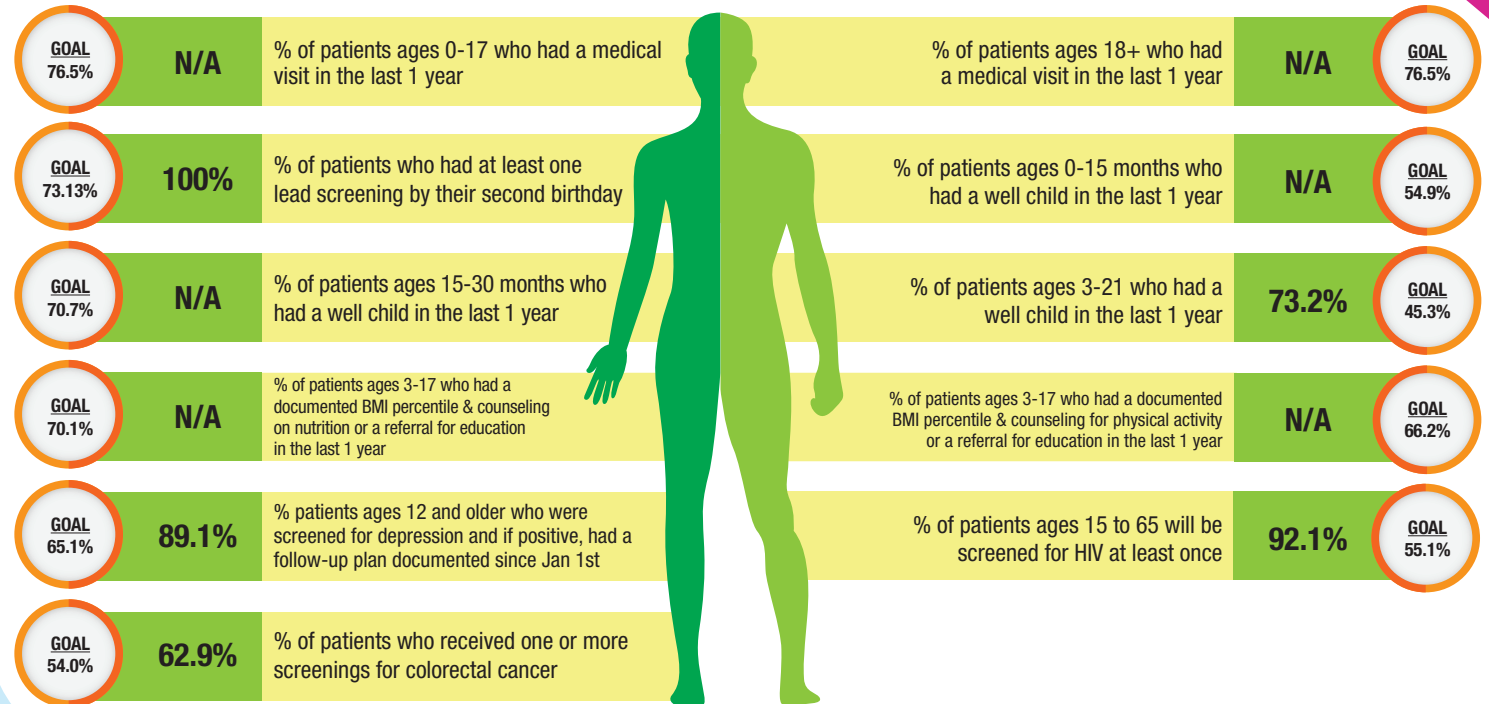
GOAL: 52.6%

% of patients
(18 and over) who
were immunized
with Flu vaccine
each flu season.

62.9%

GOAL: 35.0%

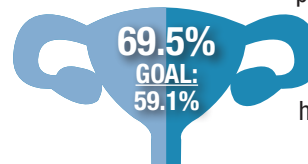
PREVENTATIVE CARE



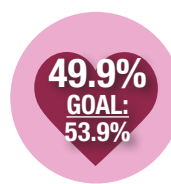
WOMEN'S HEALTH



% of female patients
ages 16-24 who are
sexually active
have a chlamydia
screening every
12 months



% of female
patients ages 21-64
have a pap test
every 3 years
Ages 30-64
have a pap test with
HPV (co-test)
every 5 years



% of female patients
ages 50-74 have a
mammogram in the
last 2 years

PATIENT SATISFACTION

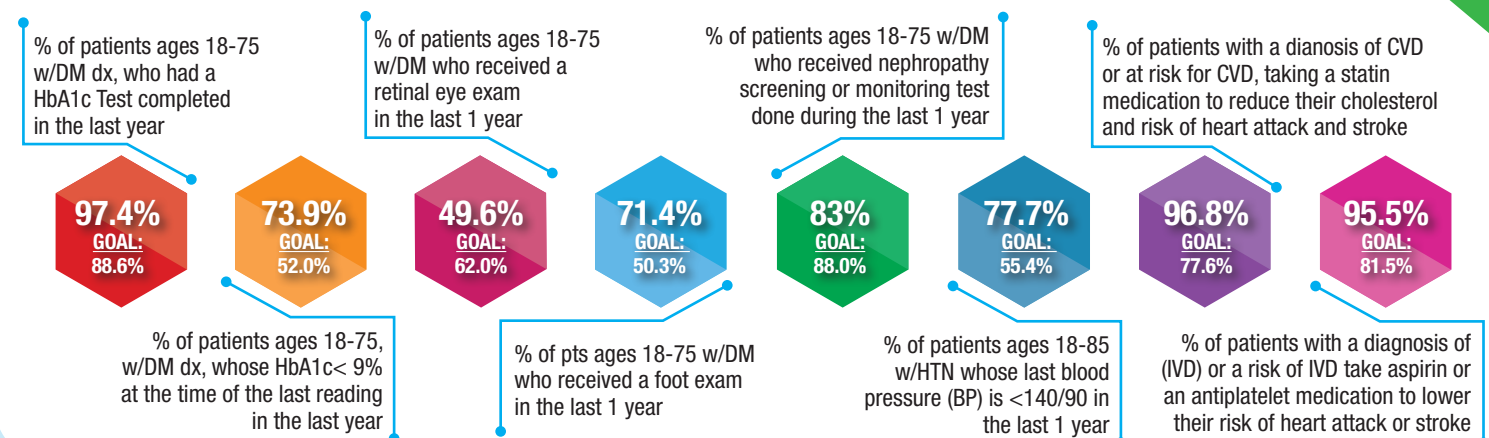


Patient Satisfaction
& Experience Survey results

100

**MEAN
SCORE**

CHRONIC DISEASE MANAGEMENT



PCMH Quality of Care Indicators

IMMUNIZATIONS



% of patients
(turning the age of 2)
who were
fully immunized

N/A

GOAL: 38.2%

% of patients
(18 and over) who
were immunized
with Tdap vaccine
in the last 10 years

N/A

GOAL: 52.6%

% of patients
(18 and over) who
were immunized
with Flu vaccine
each flu season.

31.2%

GOAL: 35.0%

PREVENTATIVE CARE

**GOAL
76.5%**

N/A

% of patients ages 0-17 who had a medical visit in the last 1 year

% of patients ages 18+ who had a medical visit in the last 1 year

N/A

**GOAL
76.5%**

**GOAL
73.13%**

N/A

% of patients who had at least one lead screening by their second birthday

% of patients ages 0-15 months who had a well child in the last 1 year

N/A

**GOAL
54.9%**

**GOAL
70.7%**

N/A

% of patients ages 15-30 months who had a well child in the last 1 year

% of patients ages 3-21 who had a well child in the last 1 year

1.6%

**GOAL
45.3%**

**GOAL
70.1%**

N/A

% of patients ages 3-17 who had a documented BMI percentile & counseling on nutrition or a referral for education in the last 1 year

% of patients ages 3-17 who had a documented BMI percentile & counseling for physical activity or a referral for education in the last 1 year

N/A

**GOAL
66.2%**

**GOAL
65.1%**

85.9%

% patients ages 12 and older who were screened for depression and if positive, had a follow-up plan documented since Jan 1st

% of patients ages 15 to 65 will be screened for HIV at least once

89.2%

**GOAL
55.1%**

**GOAL
54.0%**

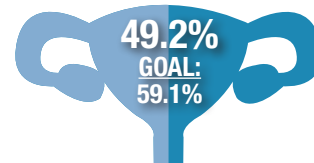
47.5%

% of patients who received one or more screenings for colorectal cancer

WOMEN'S HEALTH



% of female patients ages 16-24 who are sexually active have a chlamydia screening every 12 months



% of female patients ages 21-64 have a pap test every 3 years
Ages 30-64 have a pap test with HPV (co-test) every 5 years



% of female patients ages 50-74 have a mammogram in the last 2 years

PATIENT SATISFACTION



Patient Satisfaction
& Experience Survey results

98.5

**MEAN
SCORE**

CHRONIC DISEASE MANAGEMENT

% of patients ages 18-75 w/DM dx, who had a HbA1c Test completed in the last year

95.2%

**GOAL:
88.6%**

% of patients ages 18-75, w/DM dx, whose HbA1c < 9% at the time of the last reading in the last year

69.6%

**GOAL:
52.0%**

% of patients ages 18-75 w/DM who received a retinal eye exam in the last 1 year

23%

**GOAL:
62.0%**

% of pts ages 18-75 w/DM who received a foot exam in the last 1 year

24.7%

**GOAL:
50.3%**

% of patients ages 18-75 w/DM who received nephropathy screening or monitoring test done during the last 1 year

57.9%

**GOAL:
88.0%**

% of patients ages 18-85 w/HTN whose last blood pressure (BP) is <140/90 in the last 1 year

78%

**GOAL:
55.4%**

% of patients with a diagnosis of CVD or at risk for CVD, taking a statin medication to reduce their cholesterol and risk of heart attack and stroke

91.3%

**GOAL:
77.6%**

% of patients with a diagnosis of (IVD) or a risk of IVD take aspirin or an antiplatelet medication to lower their risk of heart attack or stroke

86.7%

**GOAL:
81.5%**

PCMH Quality of Care Indicators

IMMUNIZATIONS



% of patients
(turning the age of 2)
who were
fully immunized

33.3%

GOAL: 38.2%

% of patients
(turning the age of 13)
who received Tdap,
HPV, and
meningococcal

44.7%

GOAL: 36.7%

% of patients
(18 and over) who
were immunized
with Tdap vaccine
in the last 10 years

N/A

GOAL: 52.6%

% of patients
(18 and over) who
were immunized
with Flu vaccine
each flu season.

44.5%

GOAL: 35.0%

PREVENTATIVE CARE



GOAL
76.5%

N/A

% of patients ages 0-17 who had a medical visit in the last 1 year

% of patients ages 18+ who had a medical visit in the last 1 year

N/A

GOAL
76.5%

GOAL
73.13%

89.7%

% of patients who had at least one lead screening by their second birthday

% of patients ages 0-15 months who had a well child in the last 1 year

N/A

GOAL
54.9%

GOAL
70.7%

N/A

% of patients ages 15-30 months who had a well child in the last 1 year

% of patients ages 3-21 who had a well child in the last 1 year

51.7%

GOAL
45.3%

GOAL
70.1%

N/A

% of patients ages 3-17 who had a documented BMI percentile & counseling on nutrition or a referral for education in the last 1 year

% of patients ages 3-17 who had a documented BMI percentile & counseling for physical activity or a referral for education in the last 1 year

N/A

GOAL
66.2%

GOAL
65.1%

65.8%

% patients ages 12 and older who were screened for depression and if positive, had a follow-up plan documented since Jan 1st

% of patients ages 15 to 65 will be screened for HIV at least once

84.3%

GOAL
55.1%

GOAL
54.0%

56.5%

% of patients who received one or more screenings for colorectal cancer

CHRONIC DISEASE MANAGEMENT

% of patients ages 18-75 w/DM dx, who had a HbA1c Test completed in the last year

94.3%

GOAL:
88.6%

% of patients ages 18-75, w/DM dx, whose HbA1c < 9% at the time of the last reading in the last year

% of patients ages 18-75 w/DM who received a retinal eye exam in the last 1 year

65.7%

GOAL:
52.0%

45.9%

GOAL:
62.0%

% of pts ages 18-75 w/DM who received a foot exam in the last 1 year

51.3%

GOAL:
50.3%

% of patients ages 18-75 w/DM who received nephropathy screening or monitoring test done during the last 1 year

69.1%

GOAL:
88.0%

% of patients ages 18-85 w/HTN whose last blood pressure (BP) is <140/90 in the last 1 year

70.6%

GOAL:
55.4%

% of patients with a diagnosis of CVD or at risk for CVD, taking a statin medication to reduce their cholesterol and risk of heart attack and stroke

89.9%

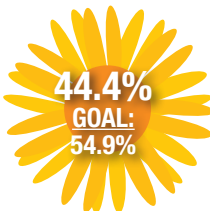
GOAL:
77.6%

% of patients with a diagnosis of (IVD) or a risk of IVD take aspirin or an antiplatelet medication to lower their risk of heart attack or stroke

86.3%

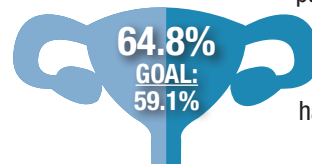
GOAL:
81.5%

WOMEN'S HEALTH



44.4%
GOAL:
54.9%

% of female patients ages 16-24 who are sexually active have a chlamydia screening every 12 months



64.8%
GOAL:
59.1%

% of female patients ages 21-64 have a pap test every 3 years
Ages 30-64 have a pap test with HPV (co-test) every 5 years



50.3%
GOAL:
53.9%

% of female patients ages 50-74 have a mammogram in the last 2 years

PATIENT SATISFACTION



Patient Satisfaction
& Experience Survey results

97.8

**MEAN
SCORE**

PCMH Quality of Care Indicators

IMMUNIZATIONS



% of patients
(turning the age of 2)
who were
fully immunized

0%

GOAL: 38.2%

% of patients
(turning the age of 13)
who received Tdap,
HPV, and
meningococcal

16.7%

GOAL: 36.7%

% of patients
(18 and over) who
were immunized
with Tdap vaccine
in the last 10 years

N/A

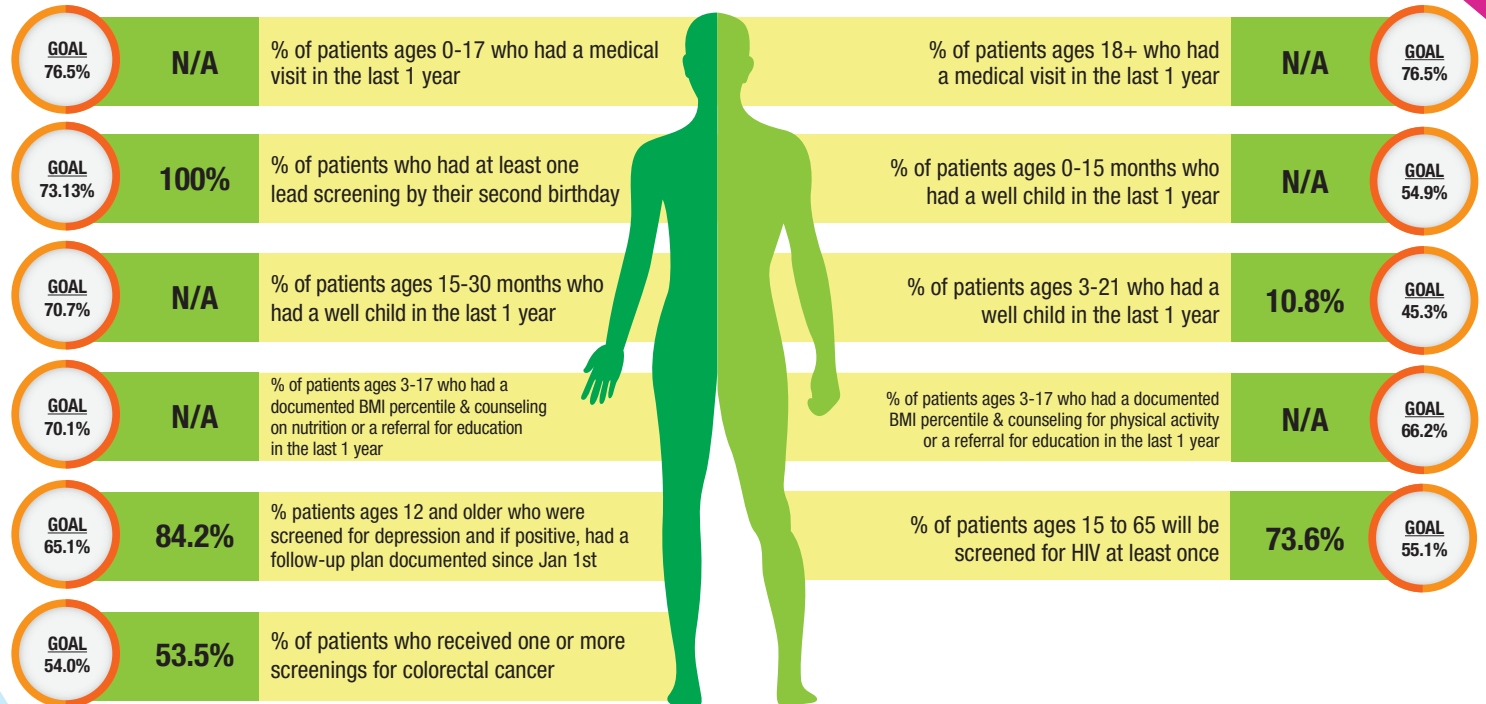
GOAL: 52.6%

% of patients
(18 and over) who
were immunized
with Flu vaccine
each flu season.

35.9%

GOAL: 35.0%

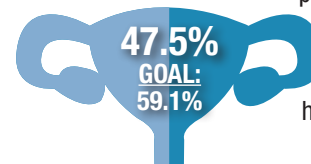
PREVENTATIVE CARE



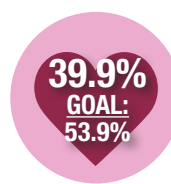
WOMEN'S HEALTH



% of female patients
ages 16-24 who are
sexually active
have a chlamydia
screening every
12 months



% of female
patients ages 21-64
have a pap test
every 3 years
Ages 30-64
have a pap test with
HPV (co-test)
every 5 years



% of female patients
ages 50-74 have a
mammogram in the
last 2 years

PATIENT SATISFACTION

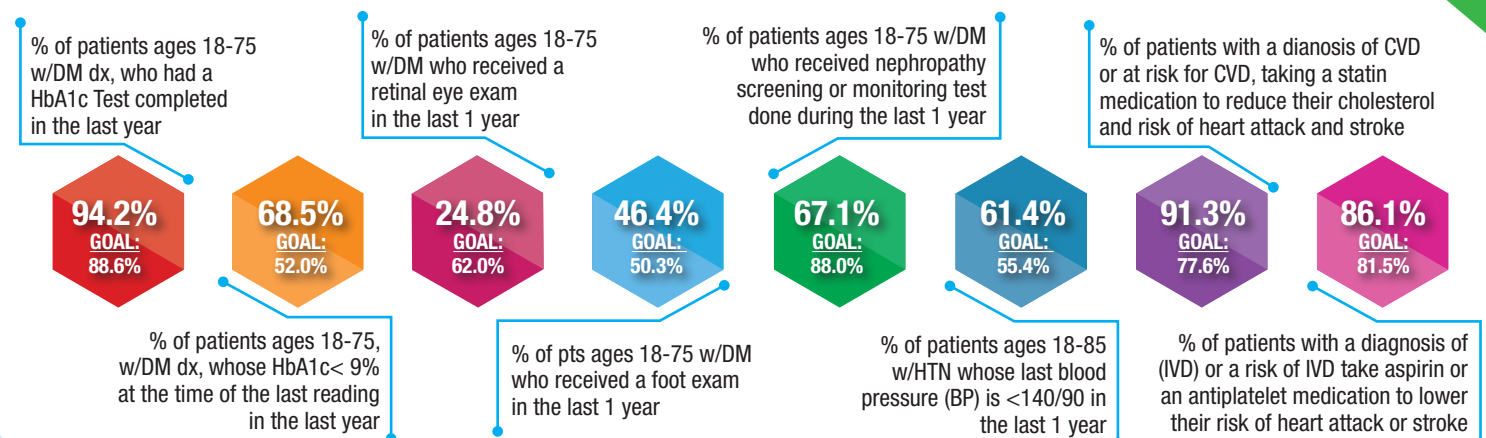


Patient Satisfaction
& Experience Survey results

97

**MEAN
SCORE**

CHRONIC DISEASE MANAGEMENT



PCMH Quality of Care Indicators

IMMUNIZATIONS



% of patients
(turning the age of 2)
who were
fully immunized

10%

GOAL: 38.2%

% of patients
(turning the age of 13)
who received Tdap,
HPV, and
meningococcal

61.5%

GOAL: 36.7%

% of patients
(18 and over) who
were immunized
with Tdap vaccine
in the last 10 years

N/A

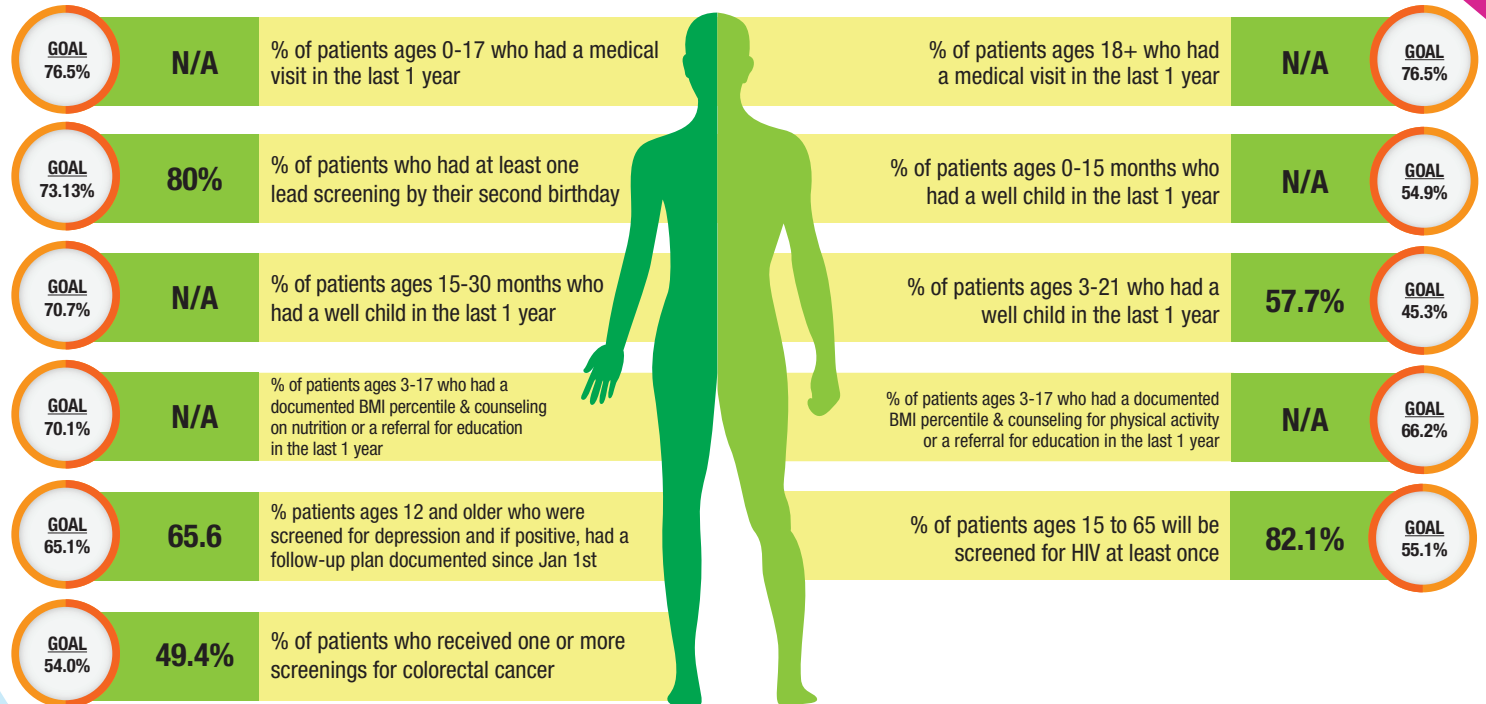
GOAL: 52.6%

% of patients
(18 and over) who
were immunized
with Flu vaccine
each flu season.

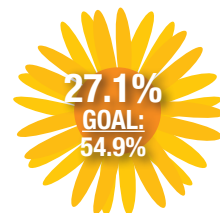
42.5%

GOAL: 35.0%

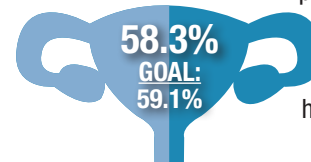
PREVENTATIVE CARE



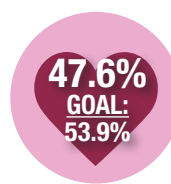
WOMEN'S HEALTH



% of female patients
ages 16-24 who are
sexually active
have a chlamydia
screening every
12 months



% of female
patients ages 21-64
have a pap test
every 3 years
Ages 30-64
have a pap test with
HPV (co-test)
every 5 years



% of female patients
ages 50-74 have a
mammogram in the
last 2 years

PATIENT SATISFACTION

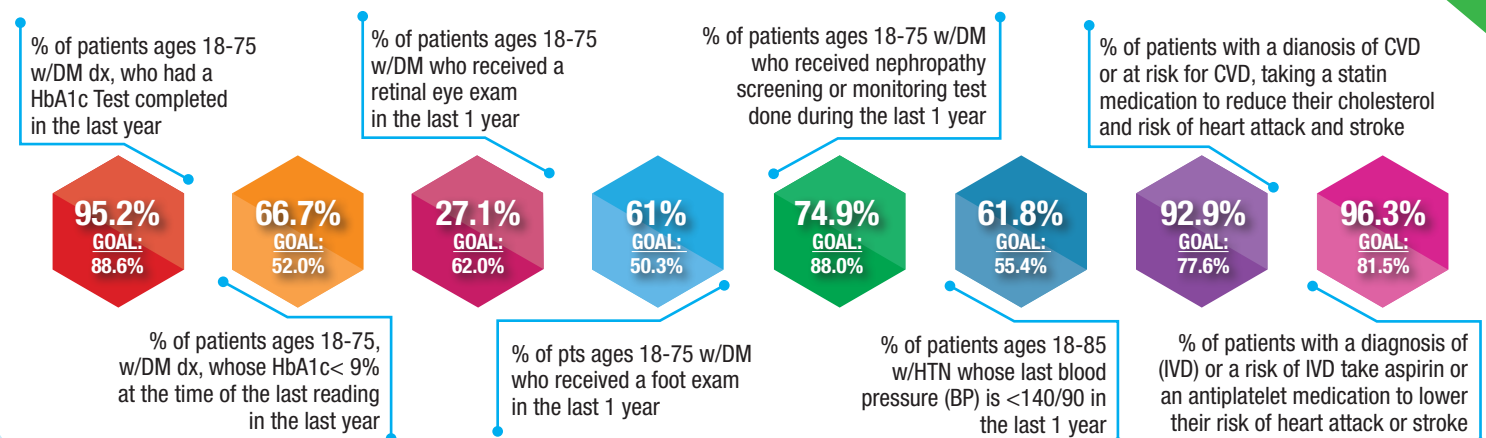


Patient Satisfaction
& Experience Survey results

97.4

**MEAN
SCORE**

CHRONIC DISEASE MANAGEMENT



PCMH Quality of Care Indicators

IMMUNIZATIONS



% of patients
(turning the age of 2)
who were
fully immunized

50%

GOAL: 38.2%

% of patients
(turning the age of 13)
who received Tdap,
HPV, and
meningococcal

57.1%

GOAL: 36.7%

% of patients
(18 and over) who
were immunized
with Tdap vaccine
in the last 10 years

N/A

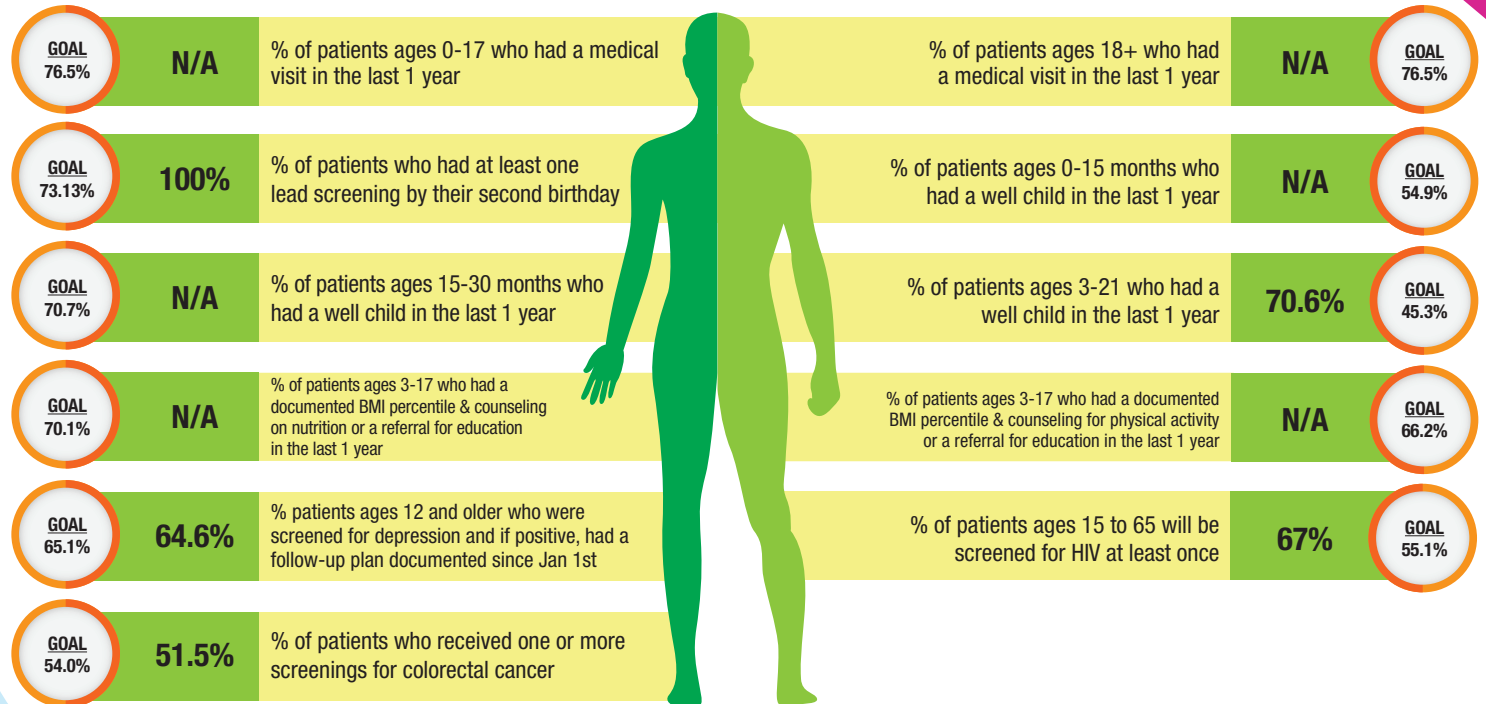
GOAL: 52.6%

% of patients
(18 and over) who
were immunized
with Flu vaccine
each flu season.

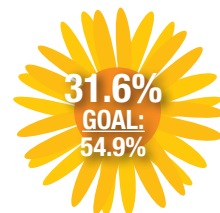
60%

GOAL: 35.0%

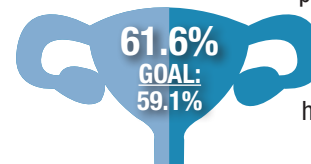
PREVENTATIVE CARE



WOMEN'S HEALTH



% of female patients
ages 16-24 who are
sexually active
have a chlamydia
screening every
12 months



% of female
patients ages 21-64
have a pap test
every 3 years
Ages 30-64
have a pap test with
HPV (co-test)
every 5 years



% of female patients
ages 50-74 have a
mammogram in the
last 2 years

PATIENT SATISFACTION

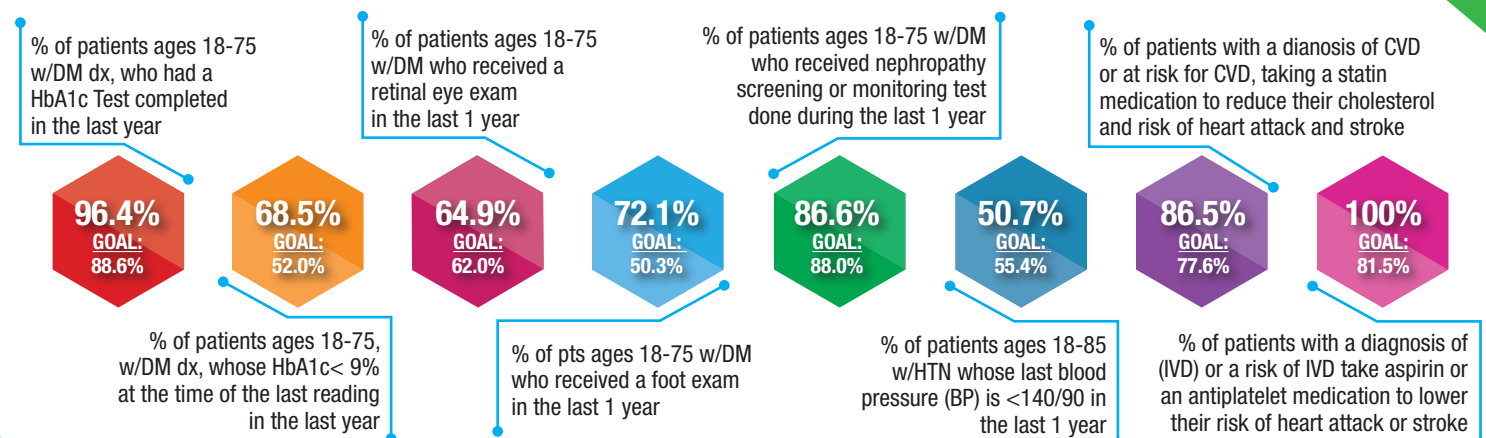


Patient Satisfaction
& Experience Survey results

95

**MEAN
SCORE**

CHRONIC DISEASE MANAGEMENT



PCMH Quality of Care Indicators

IMMUNIZATIONS



% of patients
(turning the age of 2)
who were
fully immunized

36%

GOAL: 38.2%

% of patients
(turning the age of 13)
who received Tdap,
HPV, and
meningococcal

46.4%

GOAL: 36.7%

% of patients
(18 and over) who
were immunized
with Tdap vaccine
in the last 10 years

N/A

GOAL: 52.6%

% of patients
(18 and over) who
were immunized
with Flu vaccine
each flu season.

40.2%

GOAL: 35.0%

PREVENTATIVE CARE



GOAL
76.5%

N/A

% of patients ages 0-17 who had a medical visit in the last 1 year

% of patients ages 18+ who had a medical visit in the last 1 year

N/A

GOAL
76.5%

GOAL
73.13%

74%

% of patients who had at least one lead screening by their second birthday

% of patients ages 0-15 months who had a well child in the last 1 year

N/A

GOAL
54.9%

GOAL
70.7%

N/A

% of patients ages 15-30 months who had a well child in the last 1 year

% of patients ages 3-21 who had a well child in the last 1 year

67%

GOAL
45.3%

GOAL
70.1%

N/A

% of patients ages 3-17 who had a documented BMI percentile & counseling on nutrition or a referral for education in the last 1 year

% of patients ages 3-17 who had a documented BMI percentile & counseling for physical activity or a referral for education in the last 1 year

N/A

GOAL
66.2%

GOAL
65.1%

86.8%

% patients ages 12 and older who were screened for depression and if positive, had a follow-up plan documented since Jan 1st

% of patients ages 15 to 65 will be screened for HIV at least once

82.2%

GOAL
55.1%

GOAL
54.0%

54%

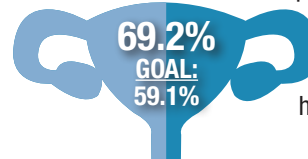
% of patients who received one or more screenings for colorectal cancer

WOMEN'S HEALTH



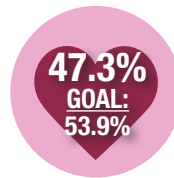
35.7%
GOAL:
54.9%

% of female patients ages 16-24 who are sexually active have a chlamydia screening every 12 months



69.2%
GOAL:
59.1%

% of female patients ages 21-64 have a pap test every 3 years
Ages 30-64 have a pap test with HPV (co-test) every 5 years



47.3%
GOAL:
53.9%

% of female patients ages 50-74 have a mammogram in the last 2 years

PATIENT SATISFACTION



Patient Satisfaction
& Experience Survey results

97.9

**MEAN
SCORE**

CHRONIC DISEASE MANAGEMENT

% of patients ages 18-75 w/DM dx, who had a HbA1c Test completed in the last year

93.3%
GOAL:
88.6%

% of patients ages 18-75, w/DM dx, whose HbA1c < 9% at the time of the last reading in the last year

% of patients ages 18-75 w/DM who received a retinal eye exam in the last 1 year

61.5%
GOAL:
52.0%

37.5%
GOAL:
62.0%

57.4%
GOAL:
50.3%

% of pts ages 18-75 w/DM who received a foot exam in the last 1 year

% of patients ages 18-75 w/DM who received nephropathy screening or monitoring test done during the last 1 year

70.9%
GOAL:
88.0%

% of patients ages 18-85 w/HTN whose last blood pressure (BP) is <140/90 in the last 1 year

69.7%
GOAL:
55.4%

% of patients with a diagnosis of CVD or at risk for CVD, taking a statin medication to reduce their cholesterol and risk of heart attack and stroke

93.4%
GOAL:
77.6%

% of patients with a diagnosis of (IVD) or a risk of IVD take aspirin or an antiplatelet medication to lower their risk of heart attack or stroke

83.3%
GOAL:
81.5%

PCMH Quality of Care Indicators

IMMUNIZATIONS



% of patients
(turning the age of 2)
who were
fully immunized

41.3%

GOAL: 38.2%

% of patients
(turning the age of 13)
who received Tdap,
HPV, and
meningococcal

67.4%

GOAL: 36.7%

% of patients
(18 and over) who
were immunized
with Tdap vaccine
in the last 10 years

N/A

GOAL: 52.6%

% of patients
(18 and over) who
were immunized
with Flu vaccine
each flu season.

35.5%

GOAL: 35.0%

PREVENTATIVE CARE

**GOAL
76.5%**

N/A

% of patients ages 0-17 who had a medical visit in the last 1 year

% of patients ages 18+ who had a medical visit in the last 1 year

N/A

**GOAL
76.5%**

**GOAL
73.13%**

98.1%

% of patients who had at least one lead screening by their second birthday

% of patients ages 0-15 months who had a well child in the last 1 year

N/A

**GOAL
54.9%**

**GOAL
70.7%**

N/A

% of patients ages 15-30 months who had a well child in the last 1 year

% of patients ages 3-21 who had a well child in the last 1 year

82.1%

**GOAL
45.3%**

**GOAL
70.1%**

N/A

% of patients ages 3-17 who had a documented BMI percentile & counseling on nutrition or a referral for education in the last 1 year

% of patients ages 3-17 who had a documented BMI percentile & counseling for physical activity or a referral for education in the last 1 year

N/A

**GOAL
66.2%**

**GOAL
65.1%**

80.2%

% patients ages 12 and older who were screened for depression and if positive, had a follow-up plan documented since Jan 1st

% of patients ages 15 to 65 will be screened for HIV at least once

83.8%

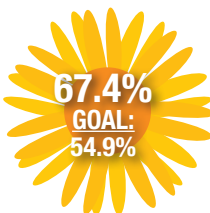
**GOAL
55.1%**

**GOAL
54.0%**

N/A

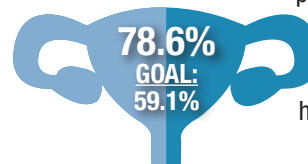
% of patients who received one or more screenings for colorectal cancer

WOMEN'S HEALTH



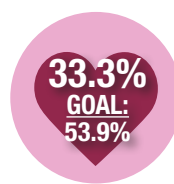
67.4%
**GOAL:
54.9%**

% of female patients ages 16-24 who are sexually active have a chlamydia screening every 12 months



78.6%
**GOAL:
59.1%**

% of female patients ages 21-64 have a pap test every 3 years
Ages 30-64 have a pap test with HPV (co-test) every 5 years



33.3%
**GOAL:
53.9%**

% of female patients ages 50-74 have a mammogram in the last 2 years

PATIENT SATISFACTION



Patient Satisfaction
& Experience Survey results

98.2

**MEAN
SCORE**

CHRONIC DISEASE MANAGEMENT

% of patients ages 18-75 w/DM dx, who had a HbA1c Test completed in the last year

N/A
**GOAL:
88.6%**

% of patients ages 18-75, w/DM dx, whose HbA1c < 9% at the time of the last reading in the last year

N/A
**GOAL:
52.0%**

% of patients ages 18-75 w/DM who received a retinal eye exam in the last 1 year

N/A
**GOAL:
62.0%**

N/A
**GOAL:
50.3%**

% of pts ages 18-75 w/DM who received a foot exam in the last 1 year

% of patients ages 18-75 w/DM who received nephropathy screening or monitoring test done during the last 1 year

N/A
**GOAL:
88.0%**

% of patients ages 18-85 w/HTN whose last blood pressure (BP) is <140/90 in the last 1 year

100%
**GOAL:
55.4%**

% of patients with a diagnosis of CVD or at risk for CVD, taking a statin medication to reduce their cholesterol and risk of heart attack and stroke

N/A
**GOAL:
77.6%**

% of patients with a diagnosis of (IVD) or a risk of IVD take aspirin or an antiplatelet medication to lower their risk of heart attack or stroke

N/A
**GOAL:
81.5%**

PCMH Quality of Care Indicators

IMMUNIZATIONS



% of patients
(turning the age of 2)
who were
fully immunized

6.7%

GOAL: 38.2%

% of patients
(turning the age of 13)
who received Tdap,
HPV, and
meningococcal

52%

GOAL: 36.7%

% of patients
(18 and over) who
were immunized
with Tdap vaccine
in the last 10 years

N/A

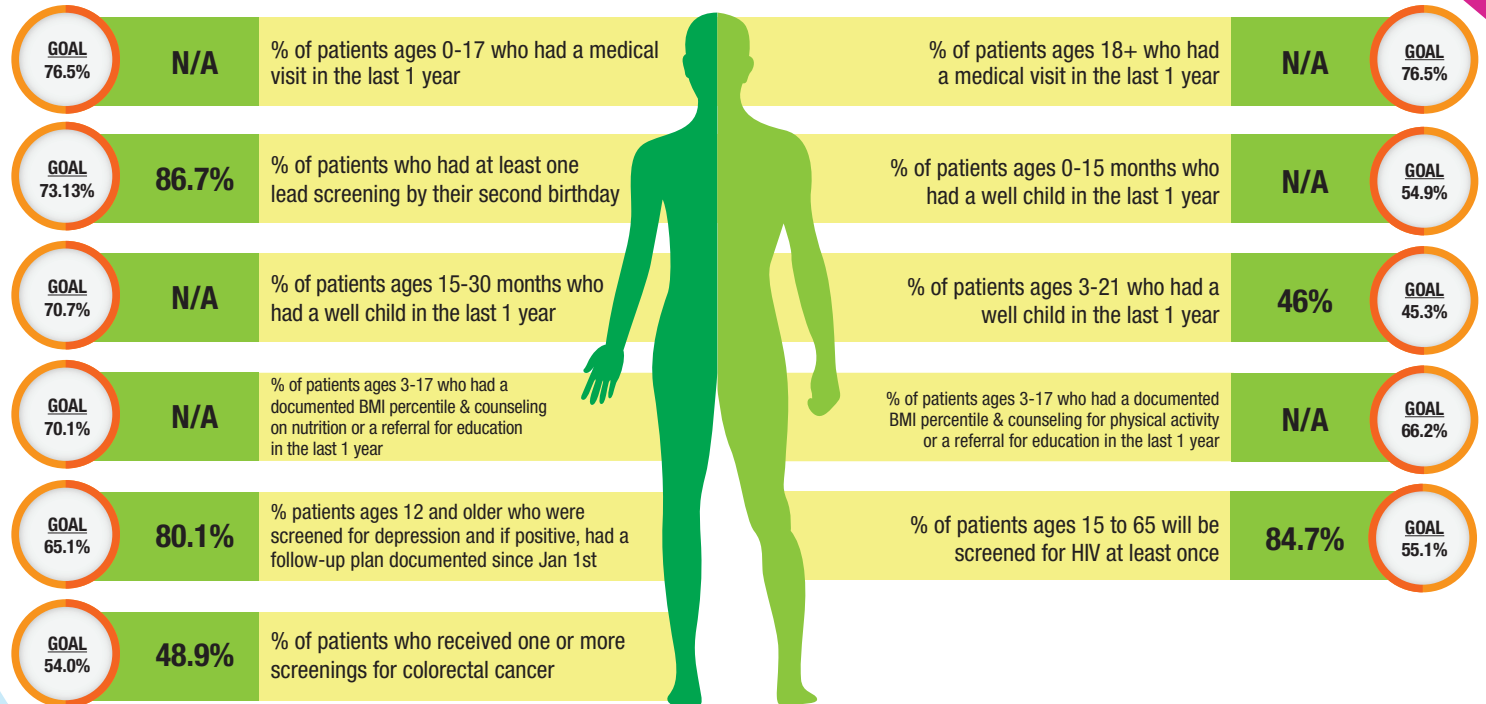
GOAL: 52.6%

% of patients
(18 and over) who
were immunized
with Flu vaccine
each flu season.

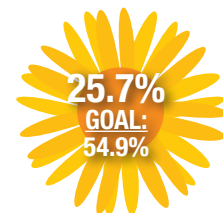
39.8%

GOAL: 35.0%

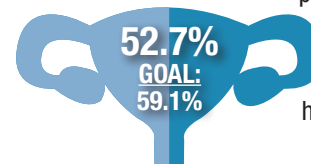
PREVENTATIVE CARE



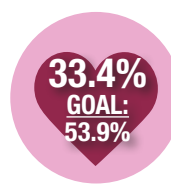
WOMEN'S HEALTH



% of female patients
ages 16-24 who are
sexually active
have a chlamydia
screening every
12 months



% of female
patients ages 21-64
have a pap test
every 3 years
Ages 30-64
have a pap test with
HPV (co-test)
every 5 years



% of female patients
ages 50-74 have a
mammogram in the
last 2 years

PATIENT SATISFACTION

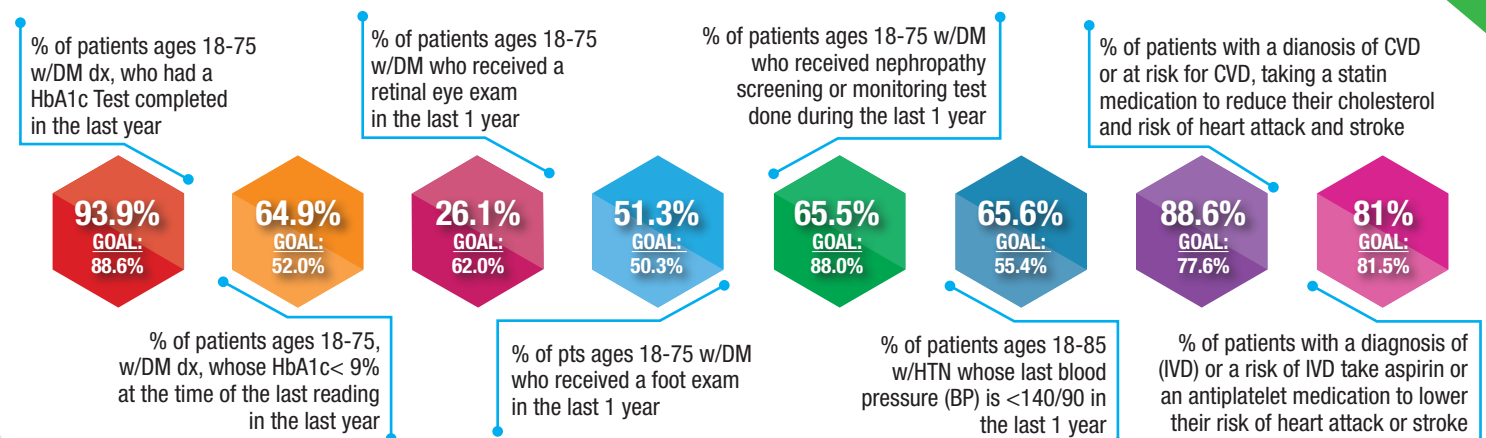


Patient Satisfaction
& Experience Survey results

98.2

**MEAN
SCORE**

CHRONIC DISEASE MANAGEMENT



PCMH Quality of Care Indicators

IMMUNIZATIONS



% of patients
(turning the age of 2)
who were
fully immunized

29%

GOAL: 38.2%

% of patients
(turning the age of 13)
who received Tdap,
HPV, and
meningococcal

68.6%

GOAL: 36.7%

% of patients
(18 and over) who
were immunized
with Tdap vaccine
in the last 10 years

N/A

GOAL: 52.6%

% of patients
(18 and over) who
were immunized
with Flu vaccine
each flu season.

54.3%

GOAL: 35.0%

PREVENTATIVE CARE

**GOAL
76.5%**

N/A

% of patients ages 0-17 who had a medical visit in the last 1 year

% of patients ages 18+ who had a medical visit in the last 1 year

N/A

**GOAL
76.5%**

**GOAL
73.13%**

93.6%

% of patients who had at least one lead screening by their second birthday

% of patients ages 0-15 months who had a well child in the last 1 year

N/A

**GOAL
54.9%**

**GOAL
70.7%**

N/A

% of patients ages 15-30 months who had a well child in the last 1 year

% of patients ages 3-21 who had a well child in the last 1 year

56.9%

**GOAL
45.3%**

**GOAL
70.1%**

N/A

% of patients ages 3-17 who had a documented BMI percentile & counseling on nutrition or a referral for education in the last 1 year

% of patients ages 3-17 who had a documented BMI percentile & counseling for physical activity or a referral for education in the last 1 year

N/A

**GOAL
66.2%**

**GOAL
65.1%**

70.5%

% patients ages 12 and older who were screened for depression and if positive, had a follow-up plan documented since Jan 1st

% of patients ages 15 to 65 will be screened for HIV at least once

85.9%

**GOAL
55.1%**

**GOAL
54.0%**

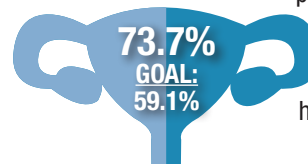
62.7%

% of patients who received one or more screenings for colorectal cancer

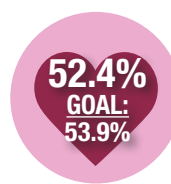
WOMEN'S HEALTH



% of female patients ages 16-24 who are sexually active have a chlamydia screening every 12 months



% of female patients ages 21-64 have a pap test every 3 years
Ages 30-64 have a pap test with HPV (co-test) every 5 years



% of female patients ages 50-74 have a mammogram in the last 2 years

PATIENT SATISFACTION



Patient Satisfaction
& Experience Survey results

97.1

**MEAN
SCORE**

CHRONIC DISEASE MANAGEMENT

% of patients ages 18-75 w/DM dx, who had a HbA1c Test completed in the last year

95.9%

GOAL: 88.6%

% of patients ages 18-75, w/DM dx, whose HbA1c < 9% at the time of the last reading in the last year

% of patients ages 18-75 w/DM who received a retinal eye exam in the last 1 year

70.1%

GOAL: 52.0%

% of pts ages 18-75 w/DM who received a foot exam in the last 1 year

49.3%

GOAL: 62.0%

% of patients ages 18-75 w/DM who received nephropathy screening or monitoring test done during the last 1 year

55.2%

GOAL: 50.3%

79.1%

GOAL: 88.0%

% of patients ages 18-85 w/HTN whose last blood pressure (BP) is <140/90 in the last 1 year

% of patients with a diagnosis of CVD or at risk for CVD, taking a statin medication to reduce their cholesterol and risk of heart attack and stroke

69.6%

GOAL: 55.4%

% of patients with a diagnosis of (IVD) or a risk of IVD take aspirin or an antiplatelet medication to lower their risk of heart attack or stroke

94.3%

GOAL: 77.6%

85%

GOAL: 81.5%

PCMH Quality of Care Indicators

IMMUNIZATIONS



% of patients
(turning the age of 2)
who were
fully immunized

29.4%

GOAL: 38.2%

% of patients
(turning the age of 13)
who received Tdap,
HPV, and
meningococcal

61.9%

GOAL: 36.7%

% of patients
(18 and over) who
were immunized
with Tdap vaccine
in the last 10 years

N/A

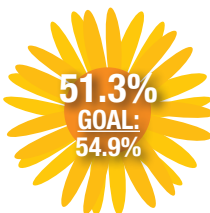
GOAL: 52.6%

% of patients
(18 and over) who
were immunized
with Flu vaccine
each flu season.

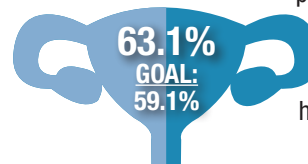
43.9%

GOAL: 35.0%

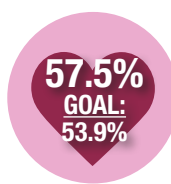
WOMEN'S HEALTH



% of female patients
ages 16-24 who are
sexually active
have a chlamydia
screening every
12 months



% of female
patients ages 21-64
have a pap test
every 3 years
Ages 30-64
have a pap test with
HPV (co-test)
every 5 years



% of female patients
ages 50-74 have a
mammogram in the
last 2 years

PATIENT SATISFACTION



Patient Satisfaction
& Experience Survey results

96.8

**MEAN
SCORE**

PREVENTATIVE CARE

GOAL: 76.5%

N/A

% of patients ages 0-17 who had a medical visit in the last 1 year

% of patients ages 18+ who had a medical visit in the last 1 year

N/A

GOAL: 76.5%

GOAL: 73.13%

83.5%

% of patients who had at least one lead screening by their second birthday

% of patients ages 0-15 months who had a well child in the last 1 year

N/A

GOAL: 54.9%

GOAL: 70.7%

N/A

% of patients ages 15-30 months who had a well child in the last 1 year

% of patients ages 3-21 who had a well child in the last 1 year

77.9%

GOAL: 45.3%

GOAL: 70.1%

N/A

% of patients ages 3-17 who had a documented BMI percentile & counseling on nutrition or a referral for education in the last 1 year

% of patients ages 3-17 who had a documented BMI percentile & counseling for physical activity or a referral for education in the last 1 year

N/A

GOAL: 66.2%

GOAL: 65.1%

79.3%

% patients ages 12 and older who were screened for depression and if positive, had a follow-up plan documented since Jan 1st

% of patients ages 15 to 65 will be screened for HIV at least once

86%

GOAL: 55.1%

GOAL: 54.0%

59.2%

% of patients who received one or more screenings for colorectal cancer

CHRONIC DISEASE MANAGEMENT

% of patients ages 18-75 w/DM dx, who had a HbA1c Test completed in the last year

96.3%
GOAL: 88.6%

% of patients ages 18-75, w/DM dx, whose HbA1c < 9% at the time of the last reading in the last year

63.9%
GOAL: 52.0%

% of patients ages 18-75 w/DM who received a retinal eye exam in the last 1 year

50.9%
GOAL: 62.0%

72.8%
GOAL: 50.3%

% of pts ages 18-75 w/DM who received a foot exam in the last 1 year

% of patients ages 18-75 w/DM who received nephropathy screening or monitoring test done during the last 1 year

78.7%
GOAL: 88.0%

% of patients ages 18-85 w/HTN whose last blood pressure (BP) is <140/90 in the last 1 year

73.8%
GOAL: 55.4%

% of patients with a diagnosis of CVD or at risk for CVD, taking a statin medication to reduce their cholesterol and risk of heart attack and stroke

95.5%
GOAL: 77.6%

% of patients with a diagnosis of (IVD) or a risk of IVD take aspirin or an antiplatelet medication to lower their risk of heart attack or stroke

92.3%
GOAL: 81.5%

PCMH Quality of Care Indicators

IMMUNIZATIONS



% of patients
(turning the age of 2)
who were
fully immunized

28.2%

GOAL: 38.2%

% of patients
(turning the age of 13)
who received Tdap,
HPV, and
meningococcal

63.6%

GOAL: 36.7%

% of patients
(18 and over) who
were immunized
with Tdap vaccine
in the last 10 years

N/A

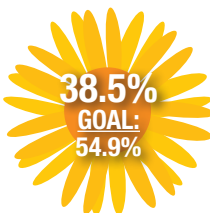
GOAL: 52.6%

% of patients
(18 and over) who
were immunized
with Flu vaccine
each flu season.

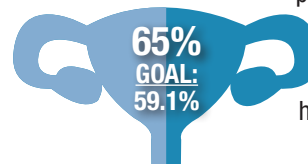
41.2%

GOAL: 35.0%

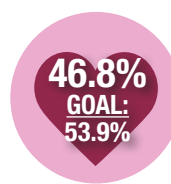
WOMEN'S HEALTH



% of female patients
ages 16-24 who are
sexually active
have a chlamydia
screening every
12 months



% of female
patients ages 21-64
have a pap test
every 3 years
Ages 30-64
have a pap test with
HPV (co-test)
every 5 years



% of female patients
ages 50-74 have a
mammogram in the
last 2 years

PATIENT SATISFACTION



Patient Satisfaction
& Experience Survey results

98

**MEAN
SCORE**

PREVENTATIVE CARE

GOAL: 76.5%

N/A

% of patients ages 0-17 who had a medical visit in the last 1 year

% of patients ages 18+ who had a medical visit in the last 1 year

GOAL: 76.5%

GOAL: 73.13%

74.4%

% of patients who had at least one lead screening by their second birthday

% of patients ages 0-15 months who had a well child in the last 1 year

N/A

GOAL: 54.9%

GOAL: 70.7%

N/A

% of patients ages 15-30 months who had a well child in the last 1 year

% of patients ages 3-21 who had a well child in the last 1 year

45.5%

GOAL: 45.3%

GOAL: 70.1%

N/A

% of patients ages 3-17 who had a documented BMI percentile & counseling on nutrition or a referral for education in the last 1 year

% of patients ages 3-17 who had a documented BMI percentile & counseling for physical activity or a referral for education in the last 1 year

N/A

GOAL: 66.2%

GOAL: 65.1%

62.7%

% patients ages 12 and older who were screened for depression and if positive, had a follow-up plan documented since Jan 1st

% of patients ages 15 to 65 will be screened for HIV at least once

88.2%

GOAL: 55.1%

GOAL: 54.0%

54.6%

% of patients who received one or more screenings for colorectal cancer

CHRONIC DISEASE MANAGEMENT

% of patients ages 18-75 w/DM dx, who had a HbA1c Test completed in the last year

95.2%

GOAL: 88.6%

% of patients ages 18-75, w/DM dx, whose HbA1c < 9% at the time of the last reading in the last year

61.7%

GOAL: 52.0%

% of patients ages 18-75 w/DM who received a retinal eye exam in the last 1 year

31.7%

GOAL: 62.0%

% of pts ages 18-75 w/DM who received a foot exam in the last 1 year

68.5%

GOAL: 50.3%

% of patients ages 18-75 w/DM who received nephropathy screening or monitoring test done during the last 1 year

69.3%

GOAL: 88.0%

% of patients ages 18-85 w/HTN whose last blood pressure (BP) is <140/90 in the last 1 year

73.4%

GOAL: 55.4%

% of patients with a diagnosis of CVD or at risk for CVD, taking a statin medication to reduce their cholesterol and risk of heart attack and stroke

89.2%

GOAL: 77.6%

% of patients with a diagnosis of (IVD) or a risk of IVD take aspirin or an antiplatelet medication to lower their risk of heart attack or stroke

90.8%

GOAL: 81.5%

PCMH Quality of Care Indicators

IMMUNIZATIONS



% of patients
(turning the age of 2)
who were
fully immunized

41.7%

GOAL: 38.2%

% of patients
(turning the age of 13)
who received Tdap,
HPV, and
meningococcal

51.4%

GOAL: 36.7%

% of patients
(18 and over) who
were immunized
with Tdap vaccine
in the last 10 years

N/A

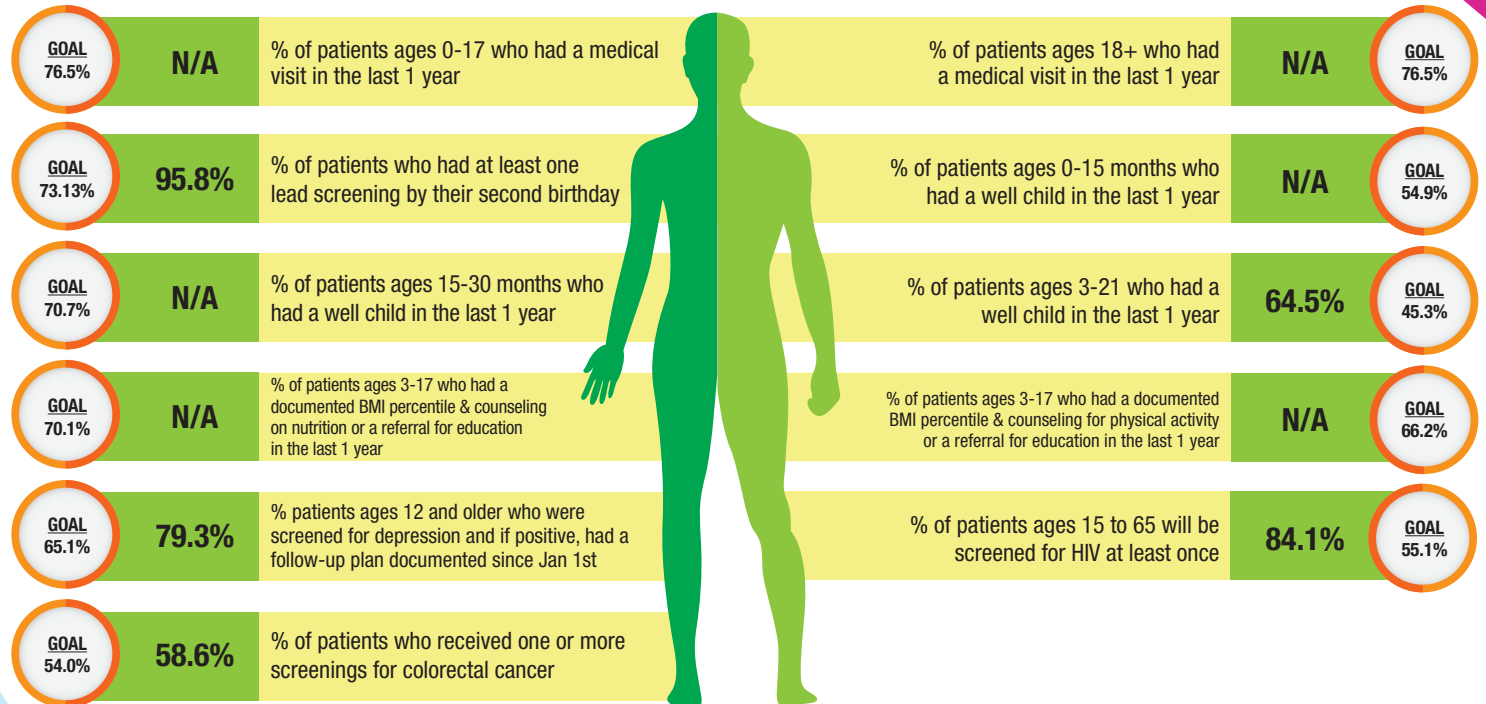
GOAL: 52.6%

% of patients
(18 and over) who
were immunized
with Flu vaccine
each flu season.

50.3%

GOAL: 35.0%

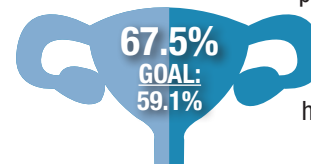
PREVENTATIVE CARE



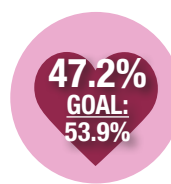
WOMEN'S HEALTH



% of female patients
ages 16-24 who are
sexually active
have a chlamydia
screening every
12 months



% of female
patients ages 21-64
have a pap test
every 3 years
Ages 30-64
have a pap test with
HPV (co-test)
every 5 years



% of female patients
ages 50-74 have a
mammogram in the
last 2 years

PATIENT SATISFACTION

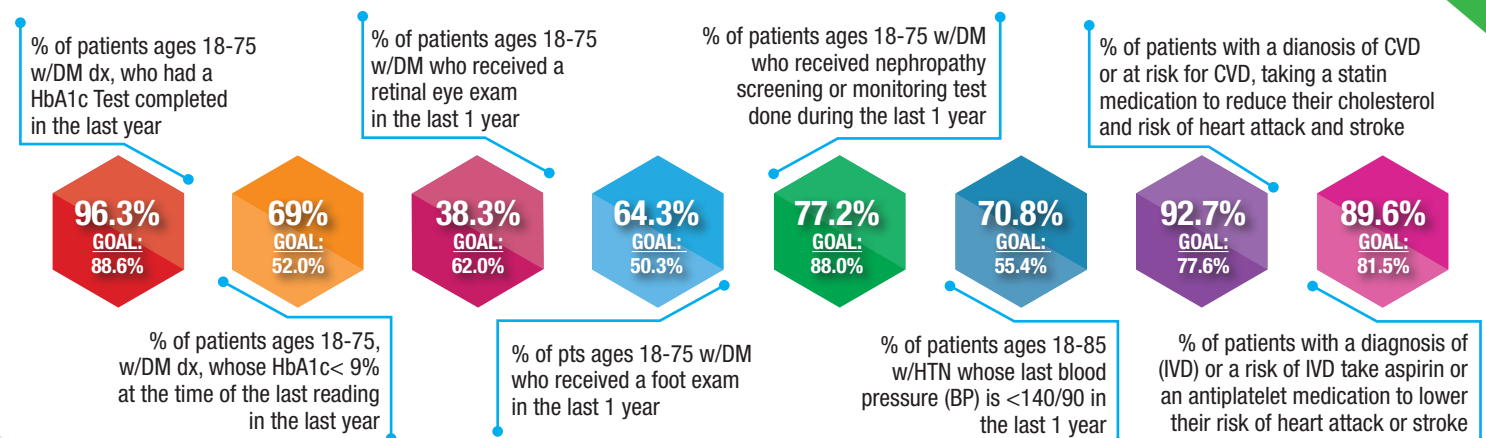


Patient Satisfaction
& Experience Survey results

96.8

**MEAN
SCORE**

CHRONIC DISEASE MANAGEMENT



PCMH Quality of Care Indicators

IMMUNIZATIONS



% of patients
(18 and over) who
were immunized
with Tdap vaccine
in the last 10 years

N/A

GOAL: 52.6%

% of patients
(18 and over) who
were immunized
with Flu vaccine
each flu season.

49.8%

GOAL: 35.0%

PREVENTATIVE CARE



% of patients ages 18+ who had a medical visit in the last 1 year

N/A

**GOAL
76.5%**

% patients ages 12 and older who were screened for depression
and if positive, had a follow-up plan documented since Jan 1st

95.3%

**GOAL
65.1%**

% of patients ages 15 to 65 will be screened for HIV at least once

81.2%

**GOAL
55.1%**

% of patients who received one or more screenings for colorectal cancer

64.4%

**GOAL
54.0%**

CHRONIC DISEASE MANAGEMENT

% of patients ages 18-75
w/DM dx, who had a
HbA1c Test completed
in the last year

95.6%

**GOAL:
88.6%**

% of patients ages 18-75,
w/DM dx, whose HbA1c < 9%
at the time of the last reading
in the last year

69.6%

**GOAL:
52.0%**

% of patients ages 18-75
w/DM who received a
retinal eye exam
in the last 1 year

51.7%

**GOAL:
62.0%**

% of pts ages 18-75 w/DM
who received a foot exam
in the last 1 year

69.6%

**GOAL:
50.3%**

% of patients ages 18-75 w/DM
who received nephropathy
screening or monitoring test
done during the last 1 year

77.9%

**GOAL:
88.0%**

% of patients ages 18-85
w/HTN whose last blood
pressure (BP) is <140/90 in
the last 1 year

62.7%

**GOAL:
55.4%**

% of patients with a diagnosis of CVD
or at risk for CVD, taking a statin
medication to reduce their cholesterol
and risk of heart attack and stroke

93.6%

**GOAL:
77.6%**

% of patients with a diagnosis of
(IVD) or a risk of IVD take aspirin or
an antiplatelet medication to lower
their risk of heart attack or stroke

88%

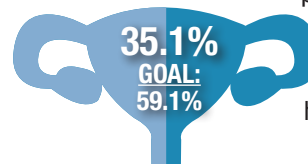
**GOAL:
81.5%**

WOMEN'S HEALTH



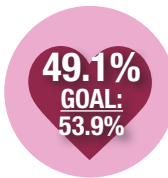
N/A
**GOAL:
54.9%**

% of female patients
ages 16-24 who are
sexually active
have a chlamydia
screening every
12 months



35.1%
**GOAL:
59.1%**

% of female
patients ages 21-64
have a pap test
every 3 years
Ages 30-64
have a pap test with
HPV (co-test)
every 5 years



49.1%
**GOAL:
53.9%**

% of female patients
ages 50-74 have a
mammogram in the
last 2 years

PATIENT SATISFACTION



Patient Satisfaction
& Experience Survey results

97.8

**MEAN
SCORE**

PCMH Quality of Care Indicators

IMMUNIZATIONS



% of patients
(turning the age of 2)
who were
fully immunized

18.2%

GOAL: 38.2%

% of patients
(turning the age of 13)
who received Tdap,
HPV, and
meningococcal

47.8%

GOAL: 36.7%

% of patients
(18 and over) who
were immunized
with Tdap vaccine
in the last 10 years

N/A

GOAL: 52.6%

% of patients
(18 and over) who
were immunized
with Flu vaccine
each flu season.

30%

GOAL: 35.0%

PREVENTATIVE CARE



**GOAL
76.5%**

N/A

% of patients ages 0-17 who had a medical visit in the last 1 year

% of patients ages 18+ who had a medical visit in the last 1 year

N/A

**GOAL
76.5%**

**GOAL
73.13%**

72.7%

% of patients who had at least one lead screening by their second birthday

% of patients ages 0-15 months who had a well child in the last 1 year

N/A

**GOAL
54.9%**

**GOAL
70.7%**

N/A

% of patients ages 15-30 months who had a well child in the last 1 year

% of patients ages 3-21 who had a well child in the last 1 year

27.4%

**GOAL
45.3%**

**GOAL
70.1%**

N/A

% of patients ages 3-17 who had a documented BMI percentile & counseling on nutrition or a referral for education in the last 1 year

% of patients ages 3-17 who had a documented BMI percentile & counseling for physical activity or a referral for education in the last 1 year

N/A

**GOAL
66.2%**

**GOAL
65.1%**

85.5%

% patients ages 12 and older who were screened for depression and if positive, had a follow-up plan documented since Jan 1st

% of patients ages 15 to 65 will be screened for HIV at least once

86%

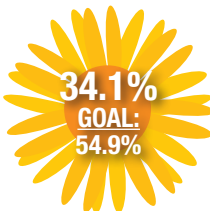
**GOAL
55.1%**

**GOAL
54.0%**

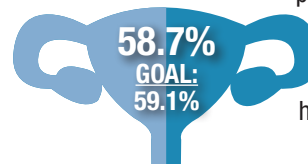
56.1%

% of patients who received one or more screenings for colorectal cancer

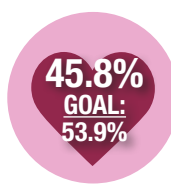
WOMEN'S HEALTH



% of female patients ages 16-24 who are sexually active have a chlamydia screening every 12 months



% of female patients ages 21-64 have a pap test every 3 years
Ages 30-64 have a pap test with HPV (co-test) every 5 years



% of female patients ages 50-74 have a mammogram in the last 2 years

PATIENT SATISFACTION



Patient Satisfaction
& Experience Survey results

96.2

**MEAN
SCORE**

CHRONIC DISEASE MANAGEMENT

% of patients ages 18-75 w/DM dx, who had a HbA1c Test completed in the last year

93.8%
**GOAL:
88.6%**

% of patients ages 18-75, w/DM dx, whose HbA1c < 9% at the time of the last reading in the last year

% of patients ages 18-75 w/DM who received a retinal eye exam in the last 1 year

63%
**GOAL:
52.0%**

38.2%
**GOAL:
62.0%**

56.5%
**GOAL:
50.3%**

% of pts ages 18-75 w/DM who received a foot exam in the last 1 year

% of patients ages 18-75 w/DM who received nephropathy screening or monitoring test done during the last 1 year

64.7%
**GOAL:
88.0%**

% of patients ages 18-85 w/HTN whose last blood pressure (BP) is <140/90 in the last 1 year

67.6%
**GOAL:
55.4%**

% of patients with a diagnosis of CVD or at risk for CVD, taking a statin medication to reduce their cholesterol and risk of heart attack and stroke

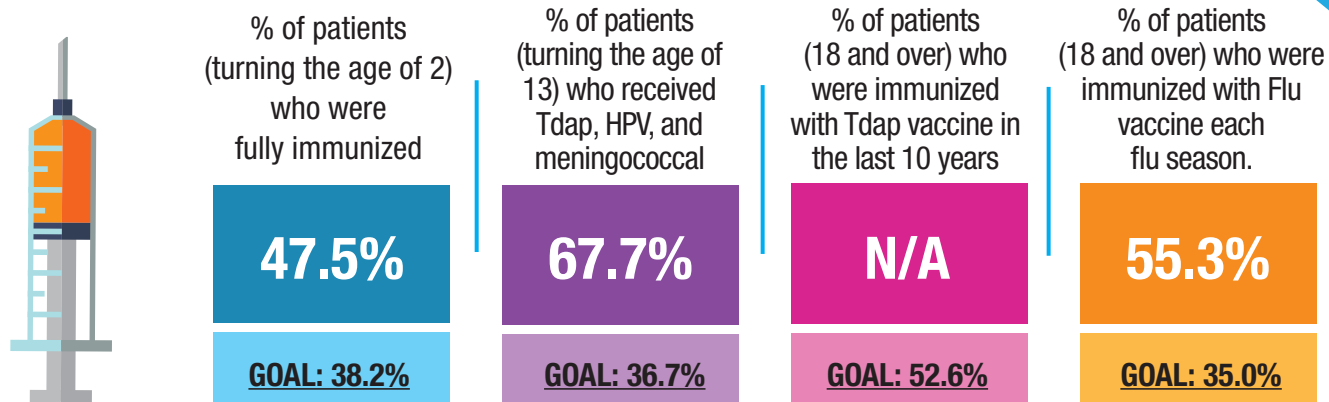
89.7%
**GOAL:
77.6%**

% of patients with a diagnosis of (IVD) or a risk of IVD take aspirin or an antiplatelet medication to lower their risk of heart attack or stroke

87.5%
**GOAL:
81.5%**

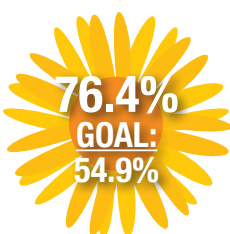
PCMH Quality of Care Indicators

IMMUNIZATIONS

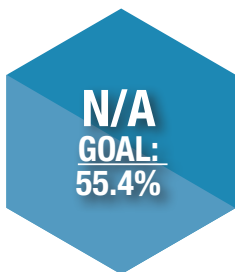


WOMEN'S HEALTH

% of female patients ages 16-24 who are sexually active have a chlamydia screening every 12 months



CHRONIC DISEASE MANAGEMENT



% of patients ages 18-85 w/HTN whose last blood pressure (BP) is <140/90 in the last 1 year

PATIENT SATISFACTION

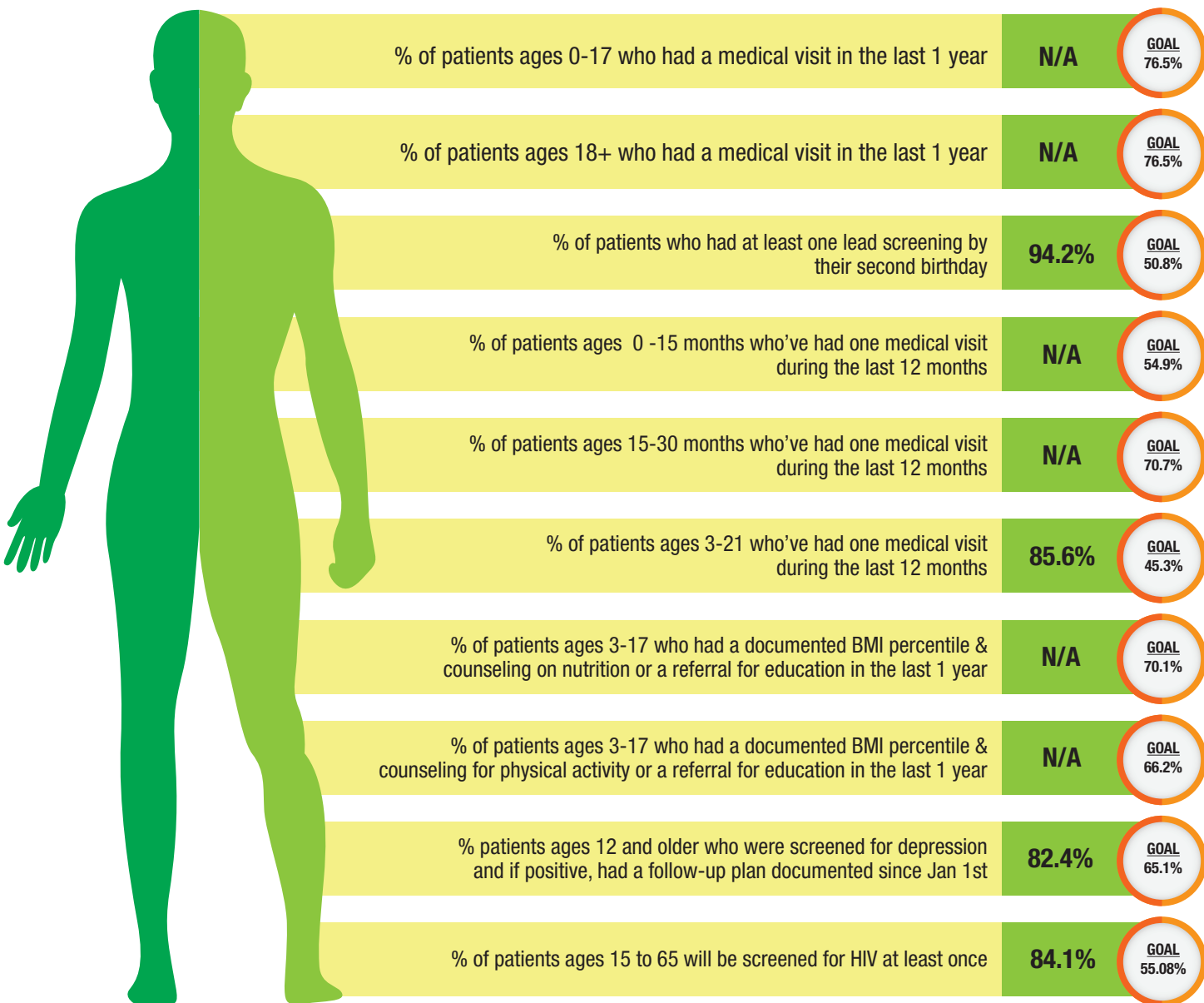


Patient Satisfaction & Experience Survey results

98.3

MEAN
SCORE

PREVENTATIVE CARE



PCMH Quality of Care Indicators

IMMUNIZATIONS



% of patients
(turning the age of 2)
who were
fully immunized

0%

GOAL: 38.2%

% of patients
(turning the age of 13)
who received Tdap,
HPV, and
meningococcal

66.7%

GOAL: 36.7%

% of patients
(18 and over) who
were immunized
with Tdap vaccine
in the last 10 years

N/A

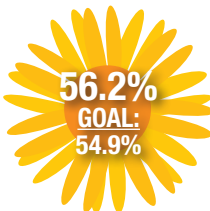
GOAL: 52.6%

% of patients
(18 and over) who
were immunized
with Flu vaccine
each flu season.

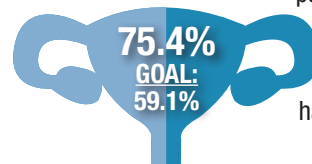
60.8%

GOAL: 35.0%

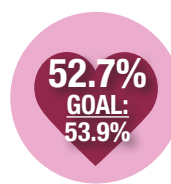
WOMEN'S HEALTH



% of female patients
ages 16-24 who are
sexually active
have a chlamydia
screening every
12 months



% of female
patients ages 21-64
have a pap test
every 3 years
Ages 30-64
have a pap test with
HPV (co-test)
every 5 years



% of female patients
ages 50-74 have a
mammogram in the
last 2 years

PATIENT SATISFACTION



Patient Satisfaction
& Experience Survey results

98.2

**MEAN
SCORE**

PREVENTATIVE CARE

GOAL
76.5%

N/A

% of patients ages 0-17 who had a medical
visit in the last 1 year

% of patients ages 18+ who had
a medical visit in the last 1 year

N/A

GOAL
76.5%

GOAL
73.13%

100%

% of patients who had at least one
lead screening by their second birthday

% of patients ages 0-15 months who
had a well child in the last 1 year

N/A

GOAL
54.9%

GOAL
70.7%

N/A

% of patients ages 15-30 months who
had a well child in the last 1 year

% of patients ages 3-21 who had a
well child in the last 1 year

27.4%

GOAL
45.3%

GOAL
70.1%

N/A

% of patients ages 3-17 who had a
documented BMI percentile & counseling
on nutrition or a referral for education
in the last 1 year

% of patients ages 3-17 who had a documented
BMI percentile & counseling for physical activity
or a referral for education in the last 1 year

N/A

GOAL
66.2%

GOAL
65.1%

62.2%

% patients ages 12 and older who were
screened for depression and if positive, had a
follow-up plan documented since Jan 1st

% of patients ages 15 to 65 will be
screened for HIV at least once

92.5%

GOAL
55.1%

GOAL
54.0%

61.5%

% of patients who received one or more
screenings for colorectal cancer

CHRONIC DISEASE MANAGEMENT

% of patients ages 18-75
w/DM dx, who had a
HbA1c Test completed
in the last year

92.8%

GOAL:
88.6%

% of patients ages 18-75,
w/DM dx, whose HbA1c < 9%
at the time of the last reading
in the last year

% of patients ages 18-75
w/DM who received a
retinal eye exam
in the last 1 year

70.8%

GOAL:
52.0%

54.9%

GOAL:
62.0%

73.4%

GOAL:
50.3%

% of pts ages 18-75 w/DM
who received a foot exam
in the last 1 year

% of patients ages 18-75 w/DM
who received nephropathy
screening or monitoring test
done during the last 1 year

80.5%

GOAL:
88.0%

% of patients ages 18-85
w/HTN whose last blood
pressure (BP) is <140/90 in
the last 1 year

74.4%

GOAL:
55.4%

% of patients with a diagnosis of CVD
or at risk for CVD, taking a statin
medication to reduce their cholesterol
and risk of heart attack and stroke

89.7%

GOAL:
77.6%

% of patients with a diagnosis of
(IVD) or a risk of IVD take aspirin or
an antiplatelet medication to lower
their risk of heart attack or stroke

88.9%

GOAL:
81.5%

PCMH Quality of Care Indicators

IMMUNIZATIONS



% of patients
(turning the age of 2)
who were
fully immunized

21.1%

GOAL: 38.2%

% of patients
(turning the age of 13)
who received Tdap,
HPV, and
meningococcal

41.7%

GOAL: 36.7%

% of patients
(18 and over) who
were immunized
with Tdap vaccine
in the last 10 years

N/A

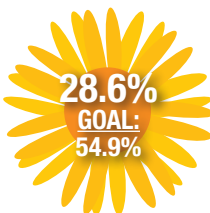
GOAL: 52.6%

% of patients
(18 and over) who
were immunized
with Flu vaccine
each flu season.

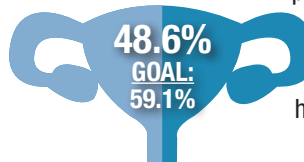
47.3%

GOAL: 35.0%

WOMEN'S HEALTH



% of female patients
ages 16-24 who are
sexually active
have a chlamydia
screening every
12 months



% of female
patients ages 21-64
have a pap test
every 3 years
Ages 30-64
have a pap test with
HPV (co-test)
every 5 years



% of female patients
ages 50-74 have a
mammogram in the
last 2 years

PATIENT SATISFACTION



Patient Satisfaction
& Experience Survey results

96.4

**MEAN
SCORE**

PREVENTATIVE CARE

GOAL
76.5%

N/A

% of patients ages 0-17 who had a medical
visit in the last 1 year

% of patients ages 18+ who had
a medical visit in the last 1 year

N/A

GOAL
76.5%

GOAL
73.13%

81.6%

% of patients who had at least one
lead screening by their second birthday

% of patients ages 0-15 months who
had a well child in the last 1 year

N/A

GOAL
54.9%

GOAL
70.7%

N/A

% of patients ages 15-30 months who
had a well child in the last 1 year

% of patients ages 3-21 who had a
well child in the last 1 year

54.1%

GOAL
45.3%

GOAL
70.1%

N/A

% of patients ages 3-17 who had a
documented BMI percentile & counseling
on nutrition or a referral for education
in the last 1 year

% of patients ages 3-17 who had a documented
BMI percentile & counseling for physical activity
or a referral for education in the last 1 year

N/A

GOAL
66.2%

GOAL
65.1%

59.5%

% patients ages 12 and older who were
screened for depression and if positive, had a
follow-up plan documented since Jan 1st

% of patients ages 15 to 65 will be
screened for HIV at least once

80.6%

GOAL
55.1%

GOAL
54.0%

42%

% of patients who received one or more
screenings for colorectal cancer

CHRONIC DISEASE MANAGEMENT

% of patients ages 18-75
w/DM dx, who had a
HbA1c Test completed
in the last year

94.1%

GOAL:
88.6%

% of patients ages 18-75,
w/DM dx, whose HbA1c < 9%
at the time of the last reading
in the last year

% of patients ages 18-75
w/DM who received a
retinal eye exam
in the last 1 year

66%

GOAL:
52.0%

24.7%

GOAL:
62.0%

35.6%

GOAL:
50.3%

% of pts ages 18-75 w/DM
who received a foot exam
in the last 1 year

% of patients ages 18-75 w/DM
who received nephropathy
screening or monitoring test
done during the last 1 year

55.3%

GOAL:
88.0%

% of patients ages 18-85
w/HTN whose last blood
pressure (BP) is <140/90 in
the last 1 year

74.3%

GOAL:
55.4%

% of patients with a diagnosis of CVD
or at risk for CVD, taking a statin
medication to reduce their cholesterol
and risk of heart attack and stroke

79.1%

GOAL:
77.6%

% of patients with a diagnosis of
(IVD) or a risk of IVD take aspirin or
an antiplatelet medication to lower
their risk of heart attack or stroke

91.3%

GOAL:
81.5%

PCMH Quality of Care Indicators

IMMUNIZATIONS



% of patients
(turning the age of 2)
who were
fully immunized

46.3%

GOAL: 38.2%

% of patients
(turning the age of 13)
who received Tdap,
HPV, and
meningococcal

59.1%

GOAL: 36.7%

% of patients
(18 and over) who
were immunized
with Tdap vaccine
in the last 10 years

N/A

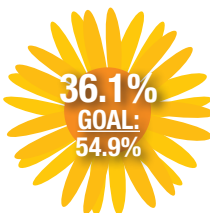
GOAL: 52.6%

% of patients
(18 and over) who
were immunized
with Flu vaccine
each flu season.

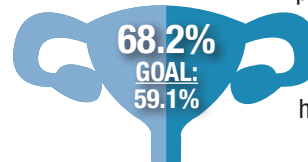
42.1%

GOAL: 35.0%

WOMEN'S HEALTH



% of female patients
ages 16-24 who are
sexually active
have a chlamydia
screening every
12 months



% of female
patients ages 21-64
have a pap test
every 3 years
Ages 30-64
have a pap test with
HPV (co-test)
every 5 years



% of female patients
ages 50-74 have a
mammogram in the
last 2 years

PATIENT SATISFACTION



Patient Satisfaction
& Experience Survey results

98

**MEAN
SCORE**

PREVENTATIVE CARE

GOAL: 76.5%

N/A

% of patients ages 0-17 who had a medical visit in the last 1 year

% of patients ages 18+ who had a medical visit in the last 1 year

N/A

GOAL: 76.5%

GOAL: 73.13%

98.5%

% of patients who had at least one lead screening by their second birthday

% of patients ages 0-15 months who had a well child in the last 1 year

N/A

GOAL: 54.9%

GOAL: 70.7%

N/A

% of patients ages 15-30 months who had a well child in the last 1 year

% of patients ages 3-21 who had a well child in the last 1 year

47.5%

GOAL: 45.3%

GOAL: 70.1%

N/A

% of patients ages 3-17 who had a documented BMI percentile & counseling on nutrition or a referral for education in the last 1 year

% of patients ages 3-17 who had a documented BMI percentile & counseling for physical activity or a referral for education in the last 1 year

N/A

GOAL: 66.2%

GOAL: 65.1%

83.1%

% patients ages 12 and older who were screened for depression and if positive, had a follow-up plan documented since Jan 1st

% of patients ages 15 to 65 will be screened for HIV at least once

90.5%

GOAL: 55.1%

GOAL: 54.0%

64.4%

% of patients who received one or more screenings for colorectal cancer

CHRONIC DISEASE MANAGEMENT

% of patients ages 18-75 w/DM dx, who had a HbA1c Test completed in the last year

94.3%
GOAL: 88.6%

% of patients ages 18-75, w/DM dx, whose HbA1c < 9% at the time of the last reading in the last year

% of patients ages 18-75 w/DM who received a retinal eye exam in the last 1 year

62%
GOAL: 52.0%

49.2%
GOAL: 62.0%

68.2%
GOAL: 50.3%

% of pts ages 18-75 w/DM who received a foot exam in the last 1 year

% of patients ages 18-75 w/DM who received nephropathy screening or monitoring test done during the last 1 year

67.1%
GOAL: 88.0%

% of patients ages 18-85 w/HTN whose last blood pressure (BP) is <140/90 in the last 1 year

65.8%
GOAL: 55.4%

% of patients with a diagnosis of CVD or at risk for CVD, taking a statin medication to reduce their cholesterol and risk of heart attack and stroke

90.5%
GOAL: 77.6%

% of patients with a diagnosis of (IVD) or a risk of IVD take aspirin or an antiplatelet medication to lower their risk of heart attack or stroke

90.5%
GOAL: 81.5%