

Wednesday, 18 February – Monday, 23 February



When most UK airports get 1 inch of snow they normally quickly come to halt. But in Southern Germany and Austria they operate as normal even if there is 20 times that amount. So, its all in a day's work for the army of snow-plough drivers and de-icing crews.

We start at one of Europe's finest aviation collections – the Deutsches Museum located in the centre of Munich and at a second site: Schleissheim Flugwert.

Included is 1 full day photographing/logging at Munich Airport and most of a second day looking around the 2 museums (or a second day at the airport, as you wish).

In Innsbruck you are free to spend as much time as you like on the observation terrace, with its adjacent café, atop the terminal; or using the van as a taxi, time at other locations around the perimeter. With the excellent local bus service, you can easily and quickly go look around the centre of Innsbruck itself.

Tour price is based on a Land Only basis. You have the option of booking on the same flights as the Tour Manager (TM) out of London Heathrow, or from your local airport to/from Munich by contacting **Alex** at **H-C Travel** who will book them for you or booking your own flights to/from the city. His phone number is: **01256 771755**.

We stay at hotels adjacent to Munich and Innsbruck Airports, on a B&B basis.

Travel in-country is by 9-seater mini-van, 5 persons + TM in a van.

PROVISIONAL ITINERARY (all times local)

DAY 1: WEDNESDAY, 18 FEBRUARY

Between 1130 and 1200, please check-in/bag drop with British Airways in Terminal 5 at Heathrow Airport. Then meet your Ian Allan Tour Manager and fellow enthusiasts, who will be gathering adjacent to column G on the Departures concourse. Latest check-in/bag drop time is 90-minutes before departure:

✈ **Heathrow Airport, Terminal 5**
✈ **Munich, Terminal 1**

Flight: BA952

Departs: 1350
Arrives: 1650

On arrival we pick up our van then transfer the few miles to the Premier Inn Hotel Munich Airport Süd, Ludwigstrasse 2, Hallbergmoos, 85399 München. Phone: +49 8122 9974998. Stay 2 nights on B&B basis.
https://www.premierinn.com/de/de/hotels/deutschland/bayern/muenchen/muenchen-airport-sued.html?cid=GLBC_MUNAIR

DAY 2: THURSDAY, 19 FEBRUARY

Day at the airport's official spotting location "South Mound", a 10-minute drive from the hotel. Note: there are no facilities at this spot.

Option: our van is used throughout the day as a 'taxi' to drop off/pick up at other locations around the airport including the "North Mound", 20 minutes away (covering the northern runway and taxiways), with the adjacent Visitors Centre & Café, and its Ju-52, DC-3 and Connie.



For details of all the recommended/official locations around the airport please go to:
<https://www.spotterguide.net/planespotting/europe/germany/munich-muc-eddm/>

DAY 3: FRIDAY, 20 FEBRUARY

At 08:30 we depart for the Deutsches Museum in central Munich. Or spend a second day at Munich Airport; your TM will pick you up in the afternoon on the journey south to Innsbruck.

The Deutsches Museum in Munich has two main aviation locations: the main museum in the city with a "Modern Aviation" exhibition and a separate Flugwerft Schleißheim branch with over 70 aircraft. Aircraft range from historical planes like the Fokker Dr.1 to modern jets like the Eurofighter, with specific examples including the Junkers Ju 52, Messerschmitt Bf 109, and Lockheed F-104 Starfighter.

Late morning we depart for the Deutsches Museum Flugwerft located on Schleissheim airfield.
<https://www.deutsches-museum.de/>

No later than 15:00 we depart the museum and set off for Innsbruck Airport (102 miles /2 hrs), picking up any members of the group who elected to spend their time at Munich Airport.

At approximately 18:00 we arrive at the Hotel Penz West, located only a 500-yard walk from the terminal. We stay 3 nights on a B&B basis, and for your evening meal you have a choice of eating in the airport terminal or in a restaurant across the road from the hotel. Location is Fürstenweg 183, 6020 Innsbruck, Austria, Austria. Phone: +43 512 22514. <https://www.penz-west.at/>

DAYS 4 & 5: SATURDAY, 21 & SUNDAY, 22 FEBRUARY



Two full days on the terminal's observation terrace: full view of ramps and runway (photo left taken in February), and/or other spots around perimeter - van to shuttle between locations.

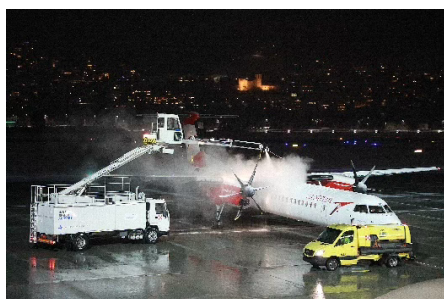
Saturday and Sunday, are the two busiest days of the week with thousands of skiers arriving and/or departing on their skiing holidays, on scheduled and charter flights. On Winter days the ramp is crowded with single aisle aircraft with a good variety of airlines and aircraft types.

For all the airport's official locations please go to the following website:

<https://www.spotterguide.net/planespotting/europe/austria/innsbruck-inn-lowi/>

The beautiful scenery makes it especially worthwhile to visit Innsbruck on these winter days - great location for photography with snow on the ground and on the adjacent Alpine mountains giving unique shots, rare in the rest of Europe.

Pictured right is a 'squeezejet' A320 climbing up into the clag (snow clouds). Note the very adjacent, steep mountainside along its starboard side.



And now, for most European enthusiasts, something completely different! See the incredible de-icing operations in action as each aircraft is surrounded by the specialist vehicles immediately prior to departure: a highly skilled task at which the Innsbruck crews are masters of their art.

DAY 6: MONDAY, 23 FEBRUARY

Return to Munich Airport; return van; check in for afternoon flights to UK. Flight details TBC.

✈ Munich, Terminal 1
✈ Heathrow Airport, Terminal 5

Flight: BA951

Departs: 2005
Arrives: 2110

Whilst waiting for our luggage to arrive Baggage Reclaim we take the opportunity to bid each other farewell – until our paths cross again!

| TOUR PRICE PER PERSON | TOUR: 603 – Austria & Germany |
|---|--|
| From: £1425.00 From: £570.00 | Based on sharing a twin-bedded room on a B&B basis - land only Single room supplement |

TOUR PRICE INCLUDES

- All van transfers as stated
- 5 nights hotel accommodation in rooms with en-suite facilities
- Continental breakfast at the hotels
- Admission to the two Museums (group ticket, not refundable)
- Services of an Ian Allan Tour Manager throughout

NOT INCLUDED

- Flights on the scheduled services of British Airways from Heathrow Airport, as stated
- UK and German Taxes
- UK Passenger Duty Tax
- Visa – if required. UK & EU passport holders do not require a visa
- Personal expenditure, eg telephone calls, laundry, drinks, etc.
- Tips and gratuities

IMPORTANT INFORMATION ABOUT OUR TOURS AND YOUR BOOKING ARE AVAILABLE FOR INSPECTION ONLINE AT:

[HTTPS://WWW.COAPWINGS.COM/TERMS-CONDITIONS](https://www.coapwings.com/terms-conditions)

**THIS INFORMATION RELATED TO ALL TRAVEL AND TOURS OPERATED BY
COAP WINGS // COAP MEDIA // IAN ALLAN AVIATION TOURS**