

Chem Chem
ASSOCIATION

Chem Chem
SAFARI

*Legendary
Expeditions*

SAFARI WITH A PURPOSE

Conservation inspired by *beauty*, driven by *kindness*



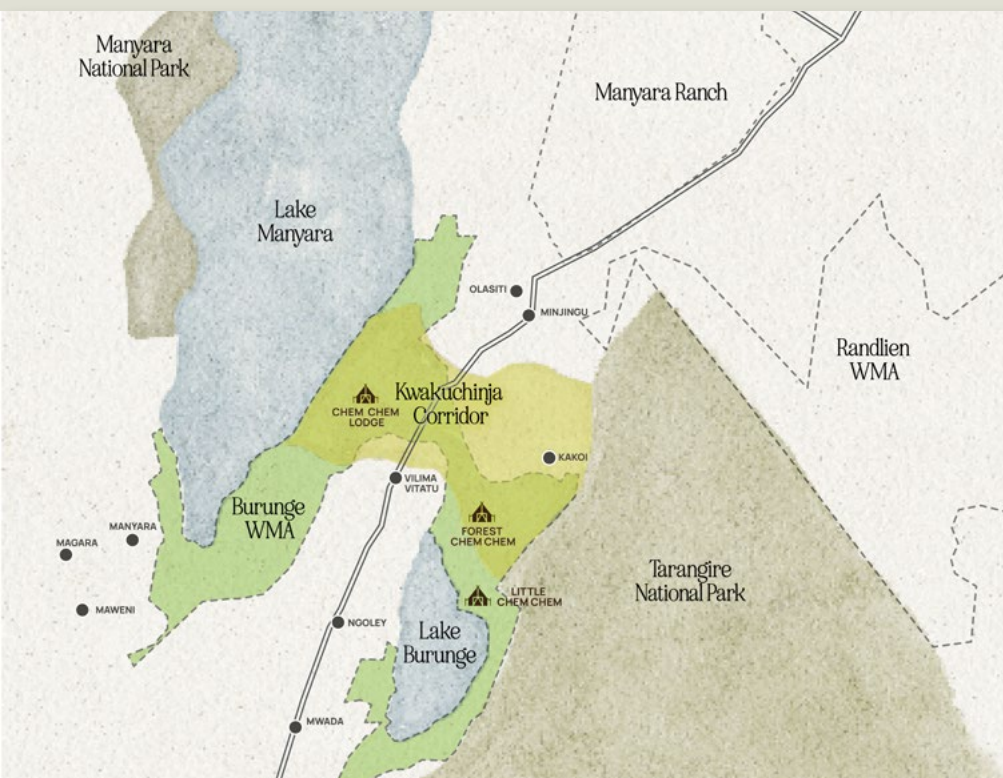
A JOURNEY OF PASSION

Experience the wonders of the Tanzanian wilderness while gaining personal insight into the meaningful work essential to preserving a vital wildlife migratory corridor and the communities that surround it.

CHEM CHEM'S CONSERVATION SUCCESS STORY

When Chem Chem's co-founders, Fabia Bausch, and Nicholas Negre, first set foot in the Burunge Wildlife Management Area (WMA) in 2007, they found a landscape that had been decimated by decades of overgrazing, poaching, and deforestation. Their shared passion for the wilderness enabled them to see potential beyond the damage, and they began what was to become Chem Chem's conservation success story.

The WMA forms part of the Kwakuchinja Wildlife Corridor, a vital migratory pathway linking the Tarangire National Park and Lake Manyara. The Corridor became the cornerstone for Chem Chem's conservation efforts, and, in just a decade and a half, their efforts to restore this crucial migratory route have seen unprecedented success. Today, the Corridor is thriving and is being used as the blueprint for protecting wildlife corridors across Tanzania.



Chem Chem's exclusive-use protected wildlife area sits between the Tarangire and Manyara national parks, linking the Tarangire and greater Serengeti ecosystems and serving as a natural migration corridor for the region's abundant wildlife.



— YOUR ITINERARY

Curated for conscious travellers, the safari with a purpose itinerary invites you on a journey from the Serengeti's western corridor to the heart of the Kwakuchinja Wildlife Corridor, where you'll discover a thriving landscape revitalised through passion and dedication.



— DAY ONE

Arrival at Legendary Lodge

Arrive at Legendary Lodge in Arusha — the gateway to the northern Tanzanian safari circuit. Situated on a working coffee estate on the outskirts of the bustling town, the lodge is a sanctuary set amid lush tropical gardens, where peaceful cottages make for the perfect setting to prepare for the journey ahead.



"The vastness of the African wilderness humbles you, reminding you of your place in the grand canvas of life. Here, amidst the towering trees and endless plains, one feels an acute awareness of our connection to the natural world."

— PETER MATTHIESSEN

DAY TWO

Chem Chem Lodge (Burunge Wildlife Management Area)

From Arusha to a sanctuary set amid palm-dotted plains that stretch to the shores of Lake Manyara, the next part of your journey takes you to Chem Chem's flagship property, Chem Chem Lodge.

From the architecture to our pioneering Slow Safari philosophy which champions experiencing nature at your own pace, every aspect of Chem Chem Lodge exists in harmony with the surrounding wilderness. This is the home of the Chem Chem Association (CCA) and the heart of our conservation success story.

Your arrival

When you arrive at the lodge, you'll be welcomed by your host and CCA manager, Clever Zulu, along with the rest of the team. From there, you'll have time to settle into your tented suite before heading to the 'Eagle's Nest', where lunch will be served against a backdrop of panoramic views over the plains.



Explore our protected wildlife area

After lunch, you'll be whisked on an all-encompassing exploration of our game-rich protected wildlife area. Learn more about the region from Salum, Chem Chem's head guide, as you traverse the area which connects the bird-rich waters of Lake Manyara and the vast savannas of Tarangire National Park.



Dine beneath the stars

Dinner is served outside, beneath the branches of a lantern-lit baobab. You'll be hosted by Clever, who'll offer fresh insight into the communities that call this region home and their role in the sustained success of the Corridor's restoration.



DAY THREE

Set off on a sunrise conservation hike

Awaken before dawn to soak up the sunrise from the summit of Vilima Vitatu Hill. Learn about the region and the surrounding villages from your guide, who'll share his wealth of knowledge with you as you climb.

Watch as the sun rises over the Corridor, and, as you take a moment to survey the landscape, witness its proximity to the communities and learn about the challenges this poses. Enjoy a steaming hot drink before making your way back down.

"There is no point in trying to protect wild animals and their habitat if we don't take care of the people who surround wildlife areas."

— NICOLAS NÉGRE, CO-FOUNDER



Visit CCA HQ and our Joint Monitoring and Protection Centre (JMPC)

As you head back to the lodge, you'll see the soccer field where the annual Chem Chem League soccer tournament is held. A core part of our community outreach programme, the event has become a beloved highlight of the local social calendar.

After a hearty breakfast back at the lodge, you'll get the opportunity to visit Chem Chem Association's HQ to gain further insight into the operations behind our ongoing community empowerment projects. You will also visit our Joint Monitoring and Protection Centre (JMPC). The first of its kind in Tanzania, the JMPC is fitted with state-of-the-art technology and software that enables us to collect and monitor critical conservation data from across the country in collaboration with our key conservation partners.

An encounter with the Big Tuskers

Once you've finished lunch, it's time to set out on a game drive where you'll spend some quality time with the region's famed Big Tusker elephants. This opportunity is a special one, given that the Tuskers only returned to the region in 2021, after being driven out decades ago by poaching.



DAY FOUR

A walk through the wilderness

To give you an opportunity to truly connect to this wilderness, your seventh day starts with a immersive nature walk with a Maasai tracker. As you walk, you'll learn all about the region's abundant fauna and flora from Salum, who'll be on hand to share his wealth of knowledge.

Stop for breakfast in the shade of an ancient baobab tree — estimated to be over 2,000 years old — where chefs will whip you up a special hot meal. As you eat, chat to Salum about the importance of maintaining a healthy ecosystem, and the crucial steps being taken to rehabilitate the Corridor.

Discover our empowerment and education projects

Your next stop is a visit to one of the Chem Chem Association's women empowerment projects. Get to know the women and see how economic training has positively impacted their lives. On the way back to the lodge, you'll stop at Mdori Primary School to spend some time with the children and teachers in a classroom.

Lunch will be waiting for you back at the lodge, and then the afternoon is all yours. Spend it at your leisure, making the most of our Roar & Restore Grove where you can unwind poolside or indulge in treatments at the Roar & Restore spa. Come evening, take a leisurely walk to the shores of Lake Manyara, where you'll enjoy our signature sundowner experience.



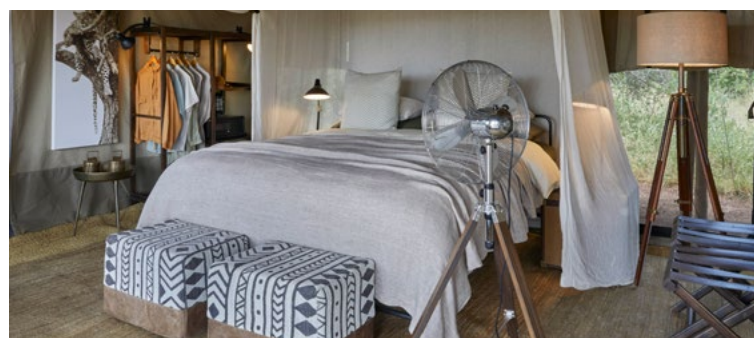
DAY FIVE

Mila Tented Camp (western corridor)

Next, your journey takes you to the remote region of Nyasirori in the western corridor of the Serengeti, where Mila Tented Camp awaits. Settle into a sublimely comfortable tented camp experience, immersing yourself in the golden plains and rich sunsets of this secluded slice of the Serengeti.

*"But eyes are blind.
You have to look with the heart"*

— ANTOINE DE SAINT-EXUPÉRY

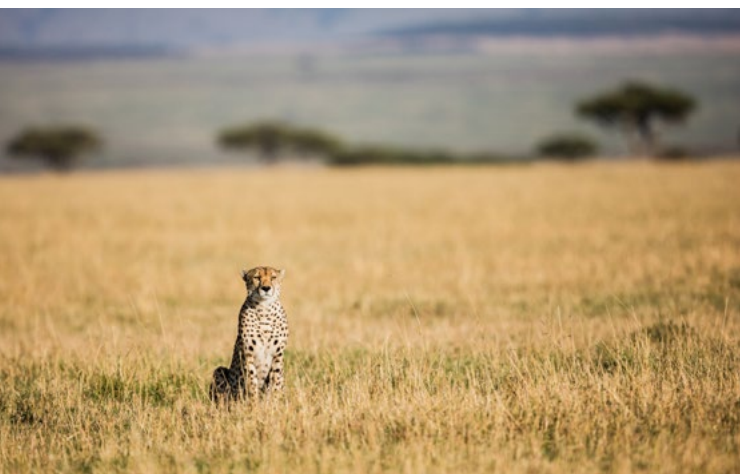


DAY SIX

Mila Tented Camp

The area surrounding Mila is known for its year-round wildlife, boasting some of the country's largest lion prides. With your dedicated guide and vehicle, this region is yours to explore at your own pace. While you're out exploring, your guide will find a scenic spot for you to stop for a picnic breakfast or lunch. Quench your thirst with a refreshing drink or hot beverage and tuck into the selection of delicious snacks specially prepared by the camp's chefs.

You'll also have the opportunity to get off the vehicle and into the wilderness for an immersive walking safari. Traverse the landscape on foot with your expert guide, learning about the region's fauna and flora, seeking out scenic vantage points, and experiencing the thrill of close game encounters.



DAY SEVEN

Mila Tented Camp

Spend your last day at Mila Tented Camp at the pace of the wild. Perhaps head out for another game drive through the plains or linger around camp as you watch the wildlife roaming past. For your final night, enjoy a spectacular sundowner with the western Serengeti as your backdrop.

"Africa changes you forever, like nowhere on Earth. Once you have been there, you will never be the same."

— BRIAN JACKMAN

DAY EIGHT

End of itinerary

Your stay will end on a high note with a hearty breakfast, after which you'll be transferred to the airstrip for your journey onward.

"The beauty of the land is something our generation has inherited. It is a treasured and fragile legacy which, if we do not continually work to protect, we will not be able to bestow upon our children..."

— FABIA BAUSCH, CO-FOUNDER





— THE DETAILS

The safari with a purpose not only unlocks a wealth of meaningful experiences, but your travels will leave a legacy – one that enables CCA to continue our vital work to protect the Corridor and its wildlife and empower the communities that share the land with us.

This exclusive safari is available at USD 13,434 per person.

✓ Accommodation

Premium accommodation at Legendary Lodge includes: breakfast, dinner, coffee, tea, mini bar stocked with soft drinks and water, local beers and house wines with dinner, and Wi-Fi internet access. Premium accommodation at Mila Tented Camp and Chem Chem Lodge includes: all meals, bottled water, soft drinks, house wines, locally available spirits and beers, coffee, tea, laundry service and Wi-Fi Internet access. All park fees and conservation fees per night are also included.

✓ Experiences

Enjoy authentic cultural interactions and time spent with our communities during your trip. All safari activities and game drives are included and are accompanied by a private guide in an exclusive-use safari vehicle.

✓ Transfers

All lodge and camp transfers to and from the closest airstrip or airport, as well as internal scheduled flights, are included for the duration of this journey.

✗ Excluded

International flights to/from Kilimanjaro International Airport, private chartered flights, items of a personal nature, gratuities, fine wines, French Champagne, cigars, boutique purchases, additional day trips (i.e. helicopter excursions), fees and tours are not included. For Legendary Lodge only: drinks, lunch, laundry services, spa treatments, and transfer to Kilimanjaro International Airport (JRO) or Arusha Airport (ARK) is not included.