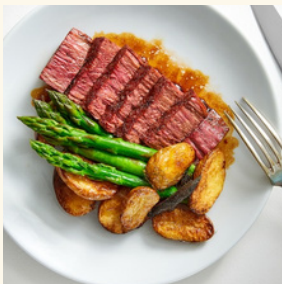


DEVELOPED WITH CHEFS IN MIND

Culinary First. Operations Ready.

Chunk offers clean label, plant-based whole cuts that cook, look, and pair just like beef. They can be pan-seared, grilled, smoked, baked, or barbecued. perfect as a centerpiece, appetizer, protein-rich and low calorie add-on. Simply use the same sauces, seasonings, and sides as beef to create dishes that appeal to vegetarians, flexitarians, vegans.

- ✓ Standout culinary experiences for dietary preferences - vegetarian, vegan, halal, kosher, and Ketogenic.
- ✓ Versatile as a center-of-plate filet or chopped for stir-fries, salads, pastas, bowls, sandwiches, tacos, and more.
- ✓ Frozen and pre portioned. 24 months shelf life frozen and 15 days thawed.
- ✓ Ideal for multiple dayparts, from casual dining to upscale catering menus.
- ✓ Nutrient dense - 25g protein in 4oz portion, low calorie, zero sugar and cholesterol, keto certified, with B12 and Iron.



STEAK

24 Steaks (4oz ea.)
NET WT 6lb
KEEP FROZEN

Nutrition Facts	
24 servings per container	
Serving size	4 oz (113g)
Amount Per Serving	
Calories	160
% Daily Value*	
Total Fat 4.5g	6%
Saturated Fat 3.6g	18%
Trans Fat 0g	
Cholesterol 0mg	0%
Sodium 220mg	10%
Total Carbohydrate 3g	1%
Dietary Fiber 4g	14%
Total Sugars < 1g	
Includes 0g Added Sugars	0%
Protein 25g	50%
Vitamin D 0mcg	0%
Calcium 0mg	0%
Iron 9mg	50%
Potassium 0mg	0%
Vitamin B12	60%

*The % Daily Value (DV) tells you how much a nutrient in a serving of food contributes to a daily diet. 2,000 calories a day is used for general nutrition advice.



STEAKHOUSE

16 Steaks (6oz ea.)
NET WT 6lb
KEEP FROZEN

Nutrition Facts	
16 servings per container	
Serving size	6 oz (170g)
Amount Per Serving	
Calories	240
% Daily Value*	
Total Fat 7g	10%
Saturated Fat 5.4g	27%
Trans Fat 0g	
Cholesterol 0mg	0%
Sodium 340mg	15%
Total Carbohydrate 5g	2%
Dietary Fiber 6g	21%
Total Sugars < 1g	
Includes 0g Added Sugars	0%
Protein 37g	74%
Vitamin D 0mcg	0%
Calcium 0mg	0%
Iron 13.6mg	80%
Potassium 0mg	0%
Vitamin B12	80%

*The % Daily Value (DV) tells you how much a nutrient in a serving of food contributes to a daily diet. 2,000 calories a day is used for general nutrition advice.

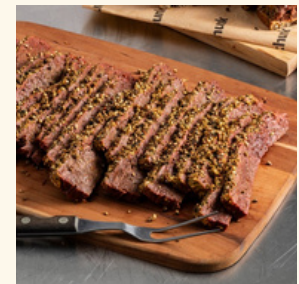


PULLED

6 Packs of 1lb
NET WT 6lb
KEEP FROZEN

Nutrition Facts	
24 servings per container	
Serving size	4 oz (113g)
Amount Per Serving	
Calories	160
% Daily Value*	
Total Fat 4.5g	6%
Saturated Fat 3.6g	18%
Trans Fat 0g	
Cholesterol 0mg	0%
Sodium 220mg	10%
Total Carbohydrate 3g	1%
Dietary Fiber 4g	14%
Total Sugars < 1g	
Includes 0g Added Sugars	0%
Protein 25g	50%
Vitamin D 0mcg	0%
Calcium 0mg	0%
Iron 9mg	50%
Potassium 0mg	0%
Vitamin B12	60%

*The % Daily Value (DV) tells you how much a nutrient in a serving of food contributes to a daily diet. 2,000 calories a day is used for general nutrition advice.



SLAB

4 Slabs (1.5lbs ea.)
NET WT 6lb
KEEP FROZEN

Nutrition Facts	
32 servings per container	
Serving size	4 oz (113g)
Amount Per Serving	
Calories	180
% Daily Value*	
Total Fat 8g	10%
Saturated Fat 6.4g	32%
Trans Fat 0g	
Cholesterol 0mg	0%
Sodium 240mg	10%
Total Carbohydrate 4g	1%
Dietary Fiber 2g	7%
Total Sugars < 1g	
Includes 0g Added Sugars	0%
Protein 24g	48%
Vitamin D 2.5mcg	10%
Calcium 984mg	80%
Iron 1.224mg	6%
Potassium 7896mg	170%
Vitamin B12 0.0336mcg	2%

*The % Daily Value (DV) tells you how much a nutrient in a serving of food contributes to a daily diet. 2,000 calories a day is used for general nutrition advice.

chunk[®]

GET INSPIRED

@CHUNK_FOODS | WWW.CHUNKFOODS.COM



STORAGE REQUIREMENTS

Frozen shelf life up to 18 months. Thaw before cooking and consume within 15 days.

SIMPLE PREP INSTRUCTIONS

Chunk can be prepared just as you would cook beef: pan sear, baste, grill, smoke, or stew. Cook to the desired doneness.

INGREDIENTS

Water, Cultured soy protein (Defatted soy flour, Soy protein isolate, Gluten), Coconut oil, Natural flavors, Beet juice concentrate color, Salt, Iron, Vitamin B12.
CONTAINS SOY, WHEAT

