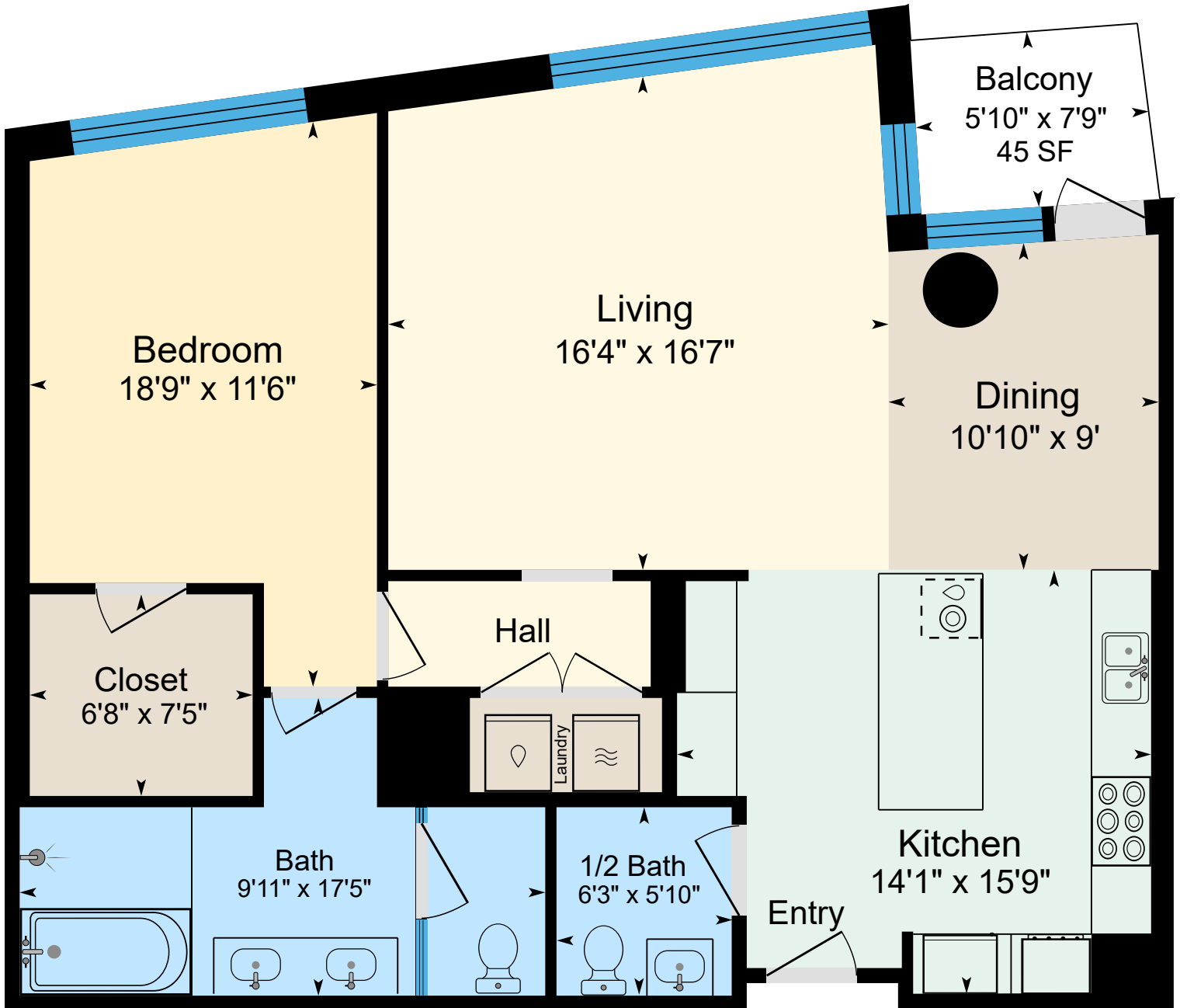


900 SW Washington St. Unit 2507, Portland, OR 97205



**Main 1,109 SF** (Measured Using Unit USF Boundary)

**Sketch Prepared for Named Client Only**  
**Property Measured on 12/21/2025**

(Only areas with color are included in square footage totals.)  
(Square footage will differ from room dimensions due to wall thickness and shape.)

This sketch and the measurements shown hereon, are approximate and are only provided for rough demonstrative purposes. The measurements are not guaranteed and should not be relied upon. If measurements are material to the reader, then the reader should independently measure the dimensions. This sketch is provided to the preparer's client along with various limitations and conditions that apply to this sketch and which should be reviewed along with this sketch. If a person other than the designated Client uses the information herein (despite a prohibition on such use), then such person agrees to be subject to the same terms and limitations as the designated Client. Separation of this text from the sketch will subject the separating party to liability. (Quality Control Check by LW)

Order floor plan services at [www.AQualityMeasurement.com](http://www.AQualityMeasurement.com)

