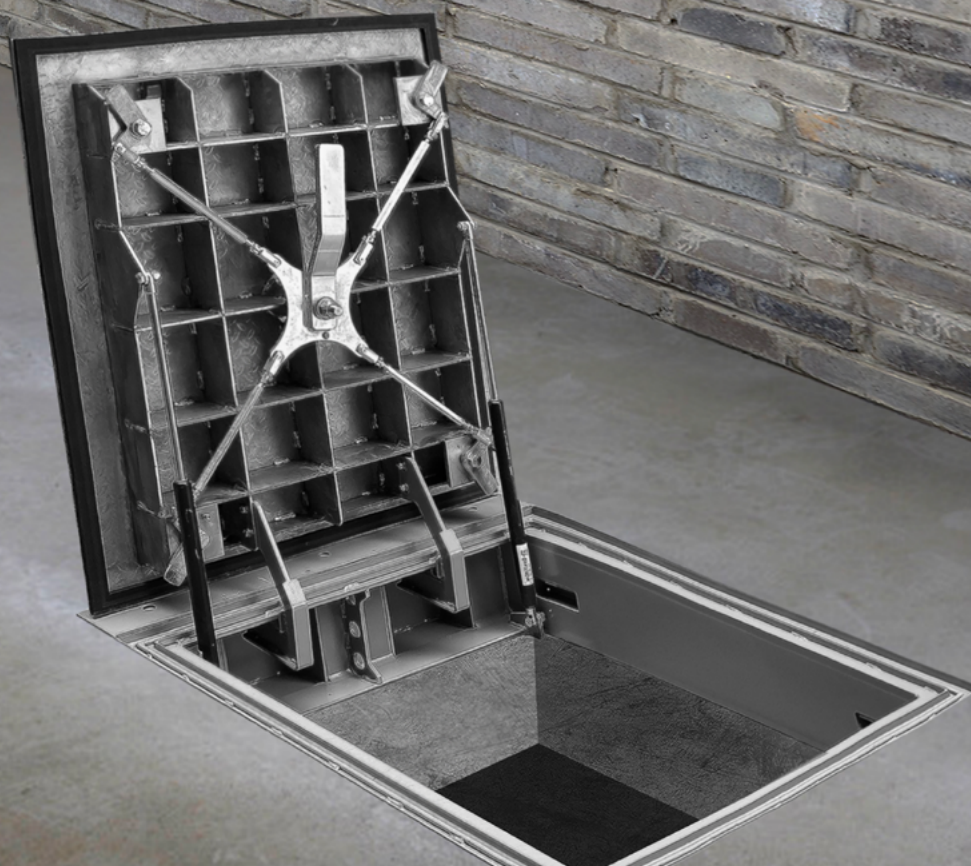


WATERPROOF STEEL HATCH

FLOOD PROTECTION



Ensures watertightness even at high water columns.

Class D400 for road use.

Designed according to the EN 124 standard.

Hatch made of high quality AISI 316L stainless steel.



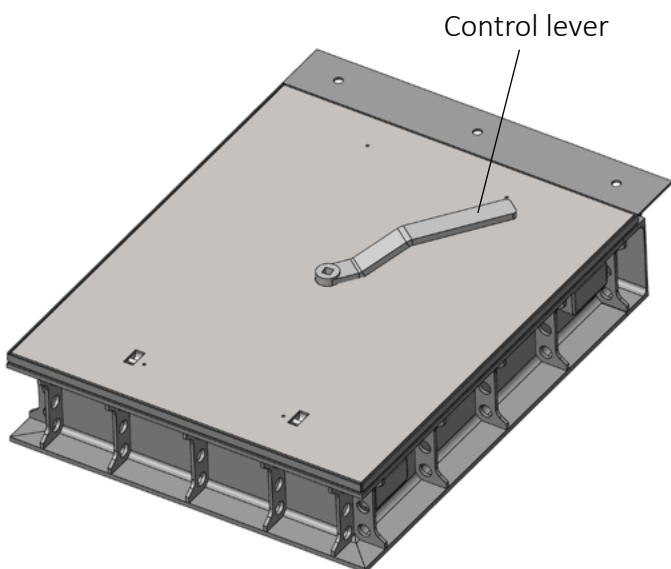
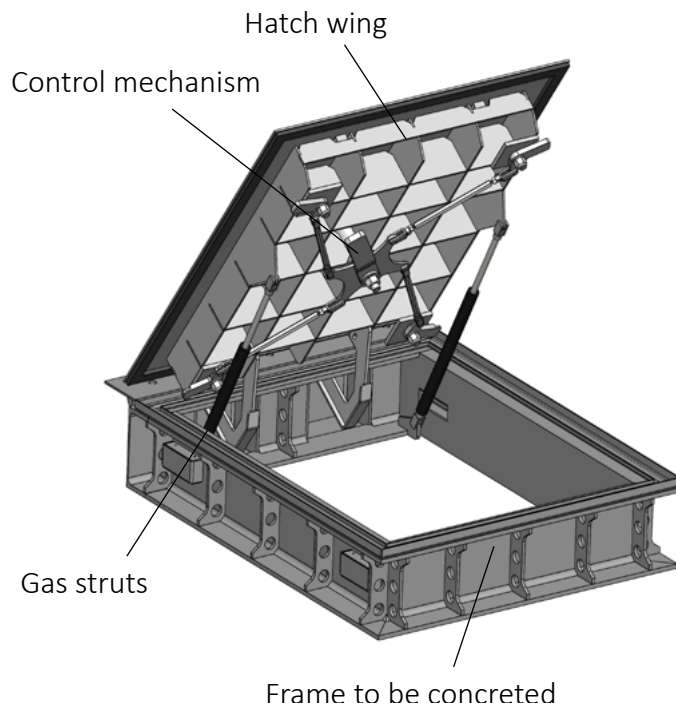
PRODUCT DESCRIPTION

The hatches are primarily intended to secure the opening of access shafts to underground networks or technologies, which must be protected against floods, but must be easily and quickly accessible for their service.

Ease of use is provided by the control mechanism, which can be operated from both sides and ensures quick and safe access.

The control of the hatch is further supported by a pair of gas struts, which facilitate easier opening and safer closing.

After the hatch is closed and secured, the durable ribbed construction ensures minimal deflection when it is fully loaded and under point load.



WATERTIGHTNESS

The key highlight of our hatches is to ensure water tightness during normal rainfall, but mainly for high water columns during floods.

TESTING IN OWN TEST CENTER

The hatches often protect critical infrastructure, ensuring safety and comfort for all of us. Therefore, before the certification, we carried out intensive endurance tests in our test center in Munich Hradiště.

TECHNICAL SPECIFICATIONS

Maximum load	40 000 kg (according to EN 124)
Internal dimensions	600 x 600 mm to 1000 x 800 mm
Materials and surface finish used	Steel frame (hot dipped zinc), stainless steel cover (AISI 316L), EPDM rubber seal
Accessories	Lever for opening and lifting the lid
Optional accessories	Safety marking of the hatch leaf Open/Close marking inside the hatch

012024.0360EN

Other flood protection solutions offered:

