

# FOR LEASE

1,500 SF RETAIL SPACE



175 KING ST, CHARLESTON, SC 29401

**Harbor**  
COMMERCIAL PARTNERS



175 KING ST, CHARLESTON, SC 29401

## PROPERTY DESCRIPTION

Space is wide open in the front with large store front windows and a restroom and storage area in the rear. It is ideal for a retailer.

Space will be available January 1, 2026.

Property is located across from American Gardens (coming soon) and Madison Mathews. It is also located between etúHome Store and Clorinda Antinori. Other businesses in close proximity are Joint Venture Estate Jewelers, LePrince Fine Art, Ibu Movement Showroom, Reinert Fine Art, Beau & Ro, Tucker Payne Antiques, J. Fredric, Paderewski Fine Art, Roller Rabbit, Charleston Mall Resale, Charleston Shoe Co., Croghan's, Lake, Ben Silver, The Preservation Society.

Retailers across the street include Billy Reid, Bin 152, Gwynn's, Alexandra Ad, Buxton Books, Charleston Library Society, Tableau and RTW.

Property is also between Queen Street and Clifford Street.

**Please contact listing agent for showings. Do not approach employees.**

## THE OFFERING

SIZE	LEASE RATE	LEASE TYPE	AVAILABLE
1,500 SF	\$80.00/PSF	NNN	January 1, 2026

## PROPERTY SPECS

SPACE AVAILABLE	1,500 SF
BUILDING SIZE	3,668 SF
LEASE PRICE	\$80 PSF
NNN	\$20.03 PSF
TAX ID/APN	457-08-04-030
COUNTY	Charleston
MUNICIPALITY	City of Charleston
YEAR BUILT	1890
BUILDING TYPE	Stand Alone
ZONING	GB
TRAFFIC COUNT	2,908 VPD

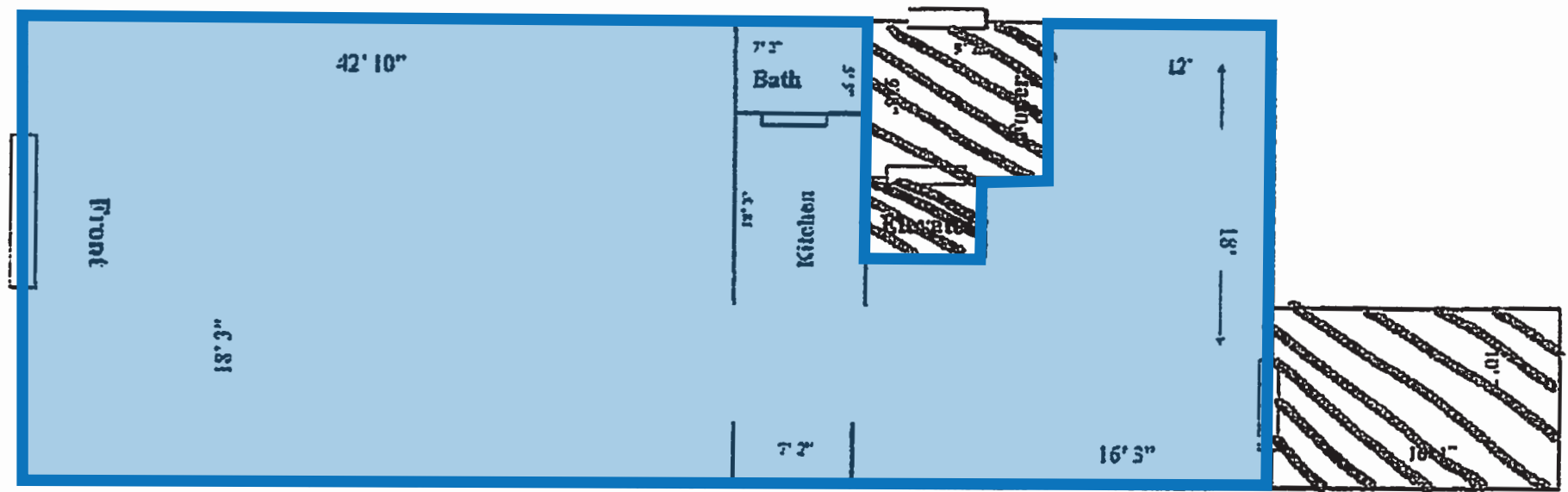






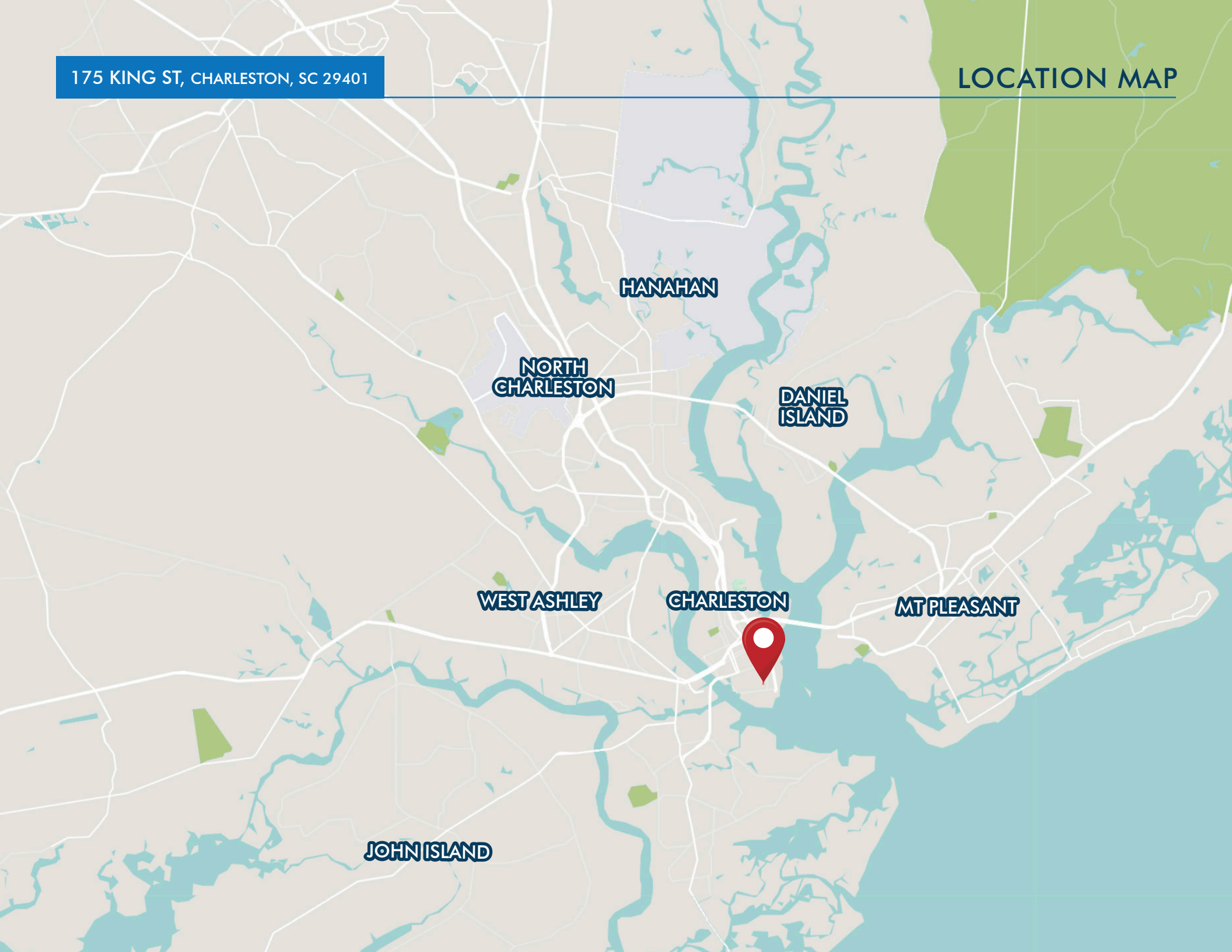
# FLOOR PLAN

175 KING ST, CHARLESTON, SC 29401



175 KING ST, CHARLESTON, SC 29401

LOCATION MAP



# KING STREET OVERVIEW

Like much of the city of Charleston, King Street has evolved throughout it's history. Starting as a port trading post, it is now a thriving shopping and retail destination, serving locals and over 7 million visitors each year. A variety of local, regional, and national retailers reside within King Street's charming pastel buildings, such as fashion, art, antiques home decor and top rated restaurants.

Along with it's brick and mortar retailers, King Street is also the host to many events throughout the year such as Second Sunday, Farmers Markets and the Charleston Food and Wine Festival.

King street is divided into three different districts with their own unique charm.

## UPPER KING

[Line St to Calhoun St](#)

Located north of Marion Square Park, Upper King is best known for it's world class restaurants, trendy bars and design- focused retailers.

## MIDDLE KING

[Calhoun St to Market St](#)

Middle King is known as the Fashion District due to it's large mix of fashion boutiques, national retailers and luxury stores.

## LOWER KING

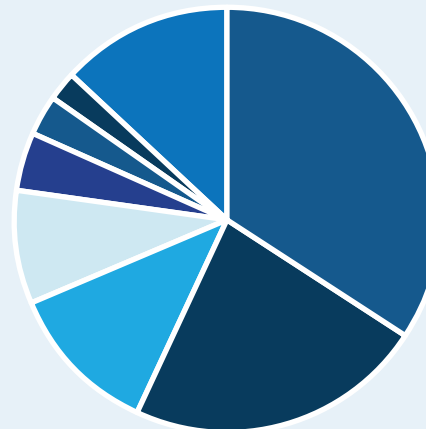
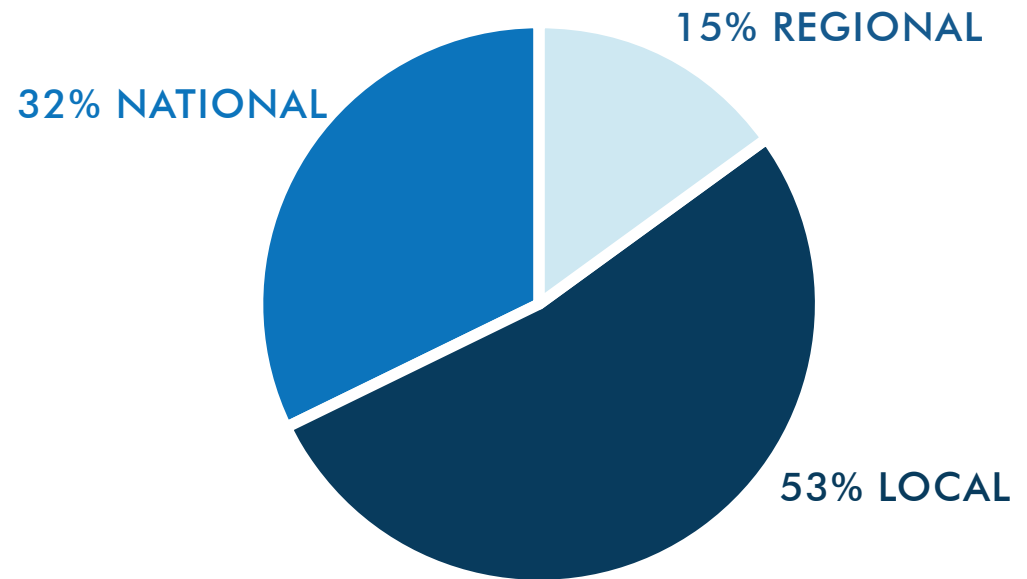
[Market St to Broad St](#)

Known as the Antiques District, Lower King is the home to a wide variety of antique stores, fine art galleries, popular restaurants and boutiques.

OCCUPANCY RATE  
**92%**

175 KING ST, CHARLESTON, SC 29401

## RETAILERS BREAKDOWN



## TYPES OF RETAILERS:

32% APPAREL  
21% RESTAURANT  
11% SPECIALTY  
8% OFFICE  
4% HOUSEWARES  
3% HEALTH & BEAUTY  
2% GALLERY  
12% OTHER SERVICES

## UPPER KING

- Bourbon N' Bubbles
- Uptown Social
- Subway
- Indaco
- Free People
- Harvest Moon Home
- The Darling
- Stars Bar
- The Record Stop
- Altered State
- West Elm
- Halls Chophouse
- Callie's Hot Little Biscuit
- Jeni's Ice Cream
- Republic Garden & Lounge
- Hotel Bennett
- Virginia's On King
- La Patisserie
- Felix Cocktails et Cuisine
- Starbucks
- Sewing Down South

## MIDDLE KING

- Urban Outfitters
- Yeti
- Walgreens
- Alice and Olivia
- Kenny Flowers
- Woof Gang
- Freebird Stores
- Pottery Barn
- Brandy Melville
- The OOPS!
- Studs
- Apple Store
- UNTUCKIT
- H&M
- Kate Spade
- Half Moon Outfitters
- Madewell
- Lululemon
- Vineyard Vines
- Candlefish
- Kendra Scott
- Gucci
- Louis Vuitton
- Abercrombie

## LOWER KING

- Target
- LoveShackFancy
- Bin 182
- Millers All Day
- 167 Raw
- Sweeter Than Fiction
- Under the Almond Trees
- Hill House Home
- Buxton Books
- Alexandra Designs
- Croghan's Jewel Box
- Lake Pajamas
- Roller Rabbit
- Tucker Payne Antiques
- Beau & Ro
- Brooks Brothers
- Aw Shuck's Seafood Shack
- LePrince Fine Art Galleries
- Madison Mathews
- etuHOME Store

## DEMOGRAPHICS

175 KING ST, CHARLESTON, SC 29401

## One mile

## Three mile

Five mile



## POPULATION

14,742

56,622

125,377



## TOTAL BUSINESSES

5,179

8,991

13,834



## MEDIAN AGE

# 32.5

## 34.1

## 38.1



## MEDIAN HOUSEHOLD INCOME

**\$73,899**

**\$73,778**

**\$78,803**





LEASING CONTACT:

Vitré Ravenel Stephens

Partner

+1.843.513.7555

[vitre.stephens@harborcommercialpartners.com](mailto:vitre.stephens@harborcommercialpartners.com)

**Harbor**  
COMMERCIAL PARTNERS

[harborcommercialpartners.com](http://harborcommercialpartners.com)