

0 Savannah Highway

ADAMS RUN, SC 29470

WALLACE RIVER

SAVANNAH HWY

8.61 ACRES

LAND FOR SALE

0 Savannah Highway

ADAMS RUN, SC 29470

PROPERTY INFORMATION

ASKING PRICE	\$2,900,000
TAX MAP ID	244-00-00-161
COUNTY	CHARLESTON COUNTY
MUNICIPALITY	CHARLESTON COUNTY & TOWN OF HOLLYWOOD
ZONING	CC - COMMUNITY COMMERCIAL
TOTAL SITE ACREAGE	8.61 ACRES
TRAFFIC COUNT	32,000 VPD

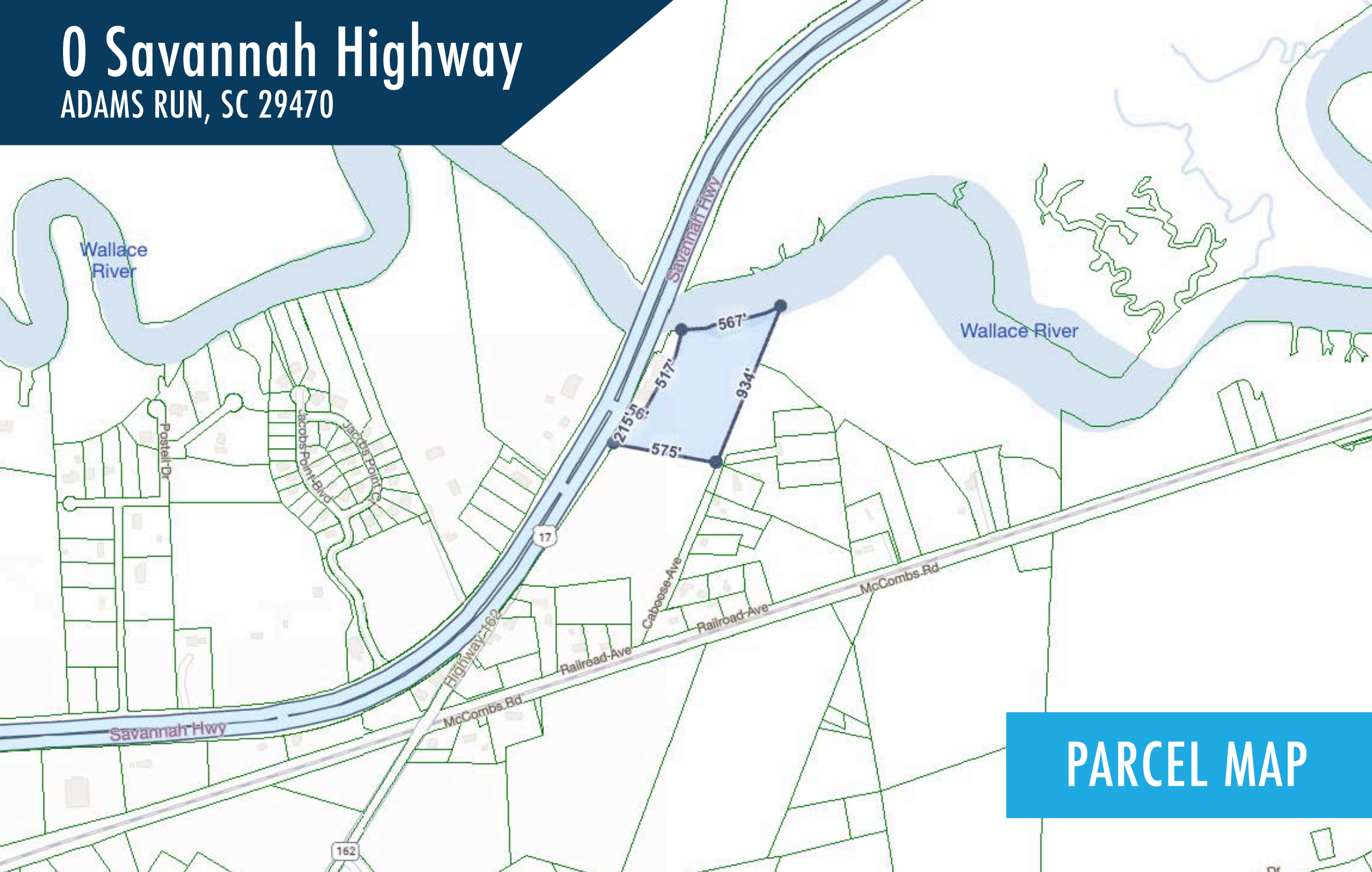
HIGHLIGHTS

8.61 acres fronting Savannah Hwy/ US 17. The property is zoned Community Commercial in Charleston County. Savannah Hwy is heavily traveled and has a traffic count of over 32,000 VPD. The property is in close proximity to Johns Island, West Ashley, Ravenel, and Hollywood. Owner will consider subdividing the parcel. There is also additional acreage adjacent to the property that can be purchased.



0 Savannah Highway

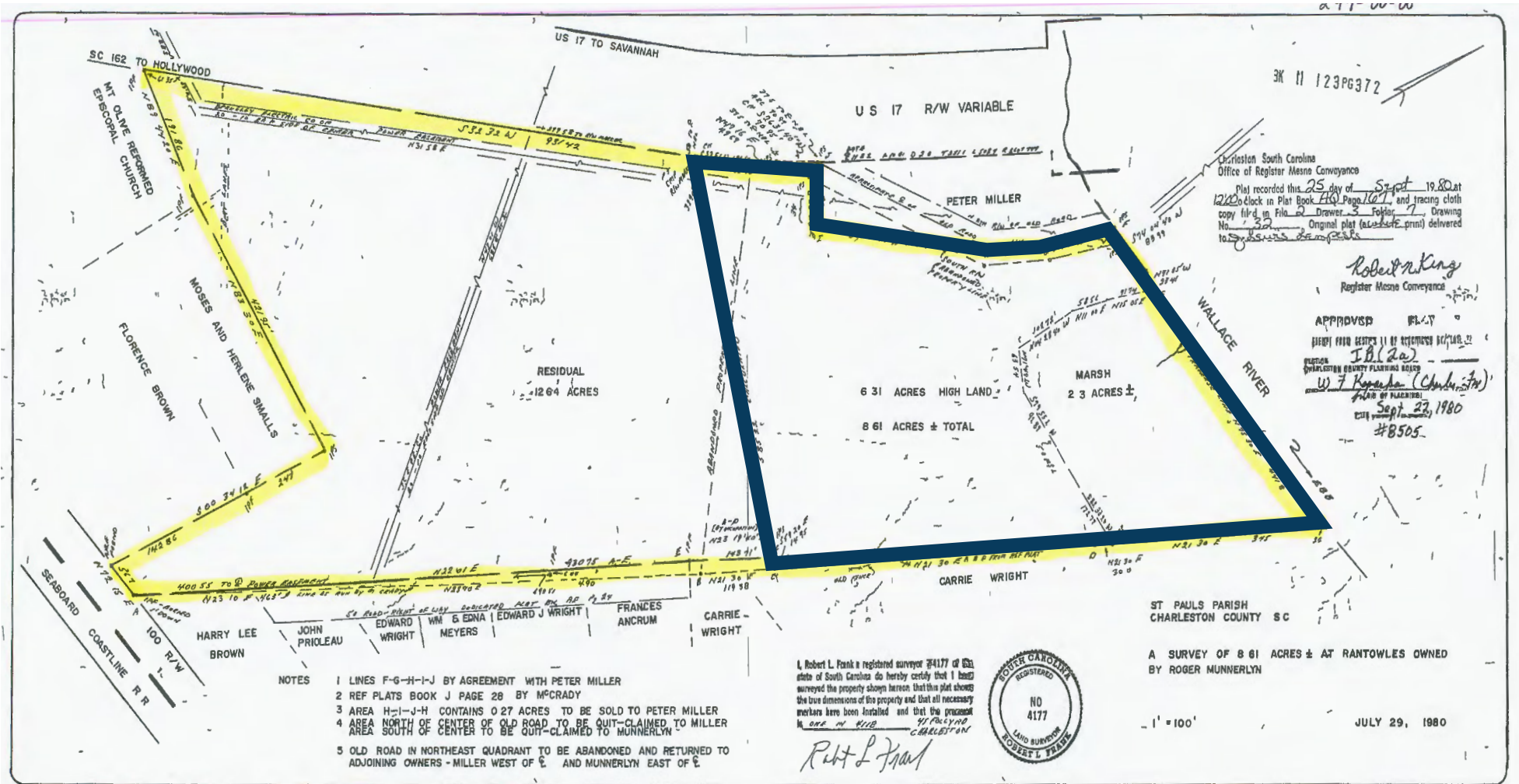
ADAMS RUN, SC 29470



PARCEL MAP

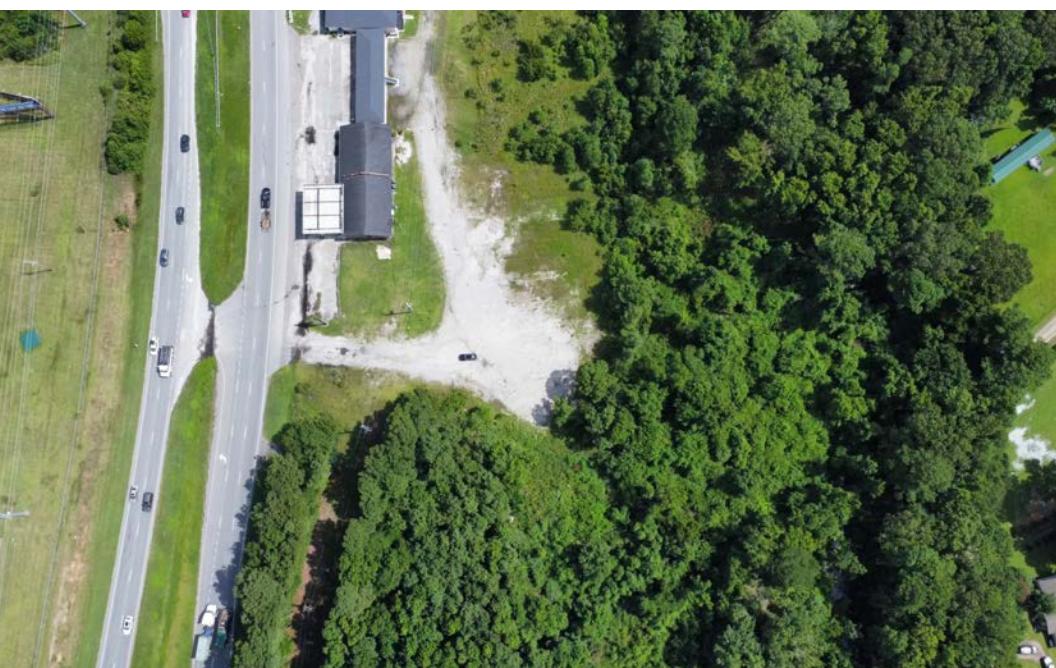
0 Savannah Highway

ADAMS RUN, SC 29470



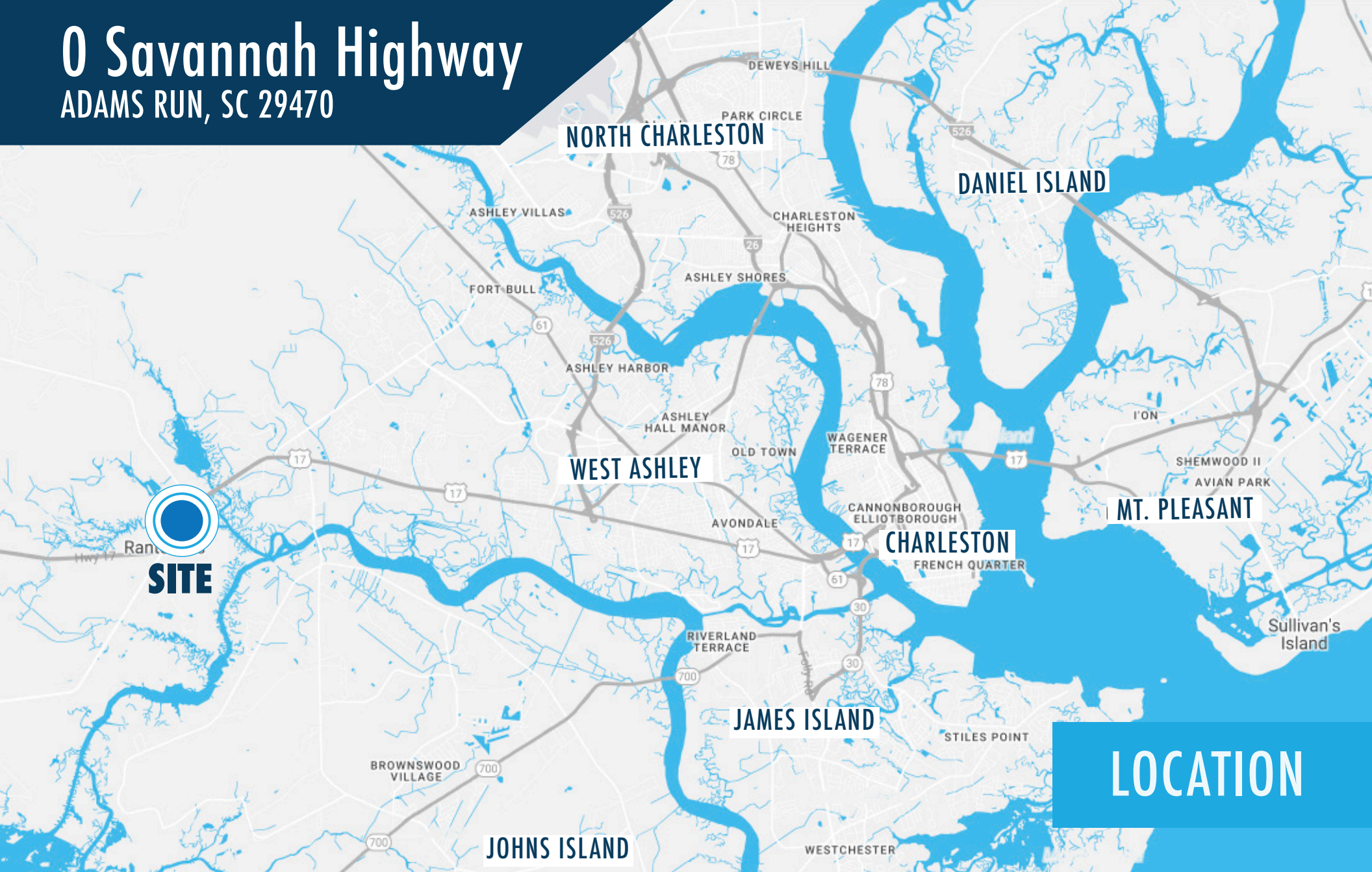
0 Savannah Highway

ADAMS RUN, SC 29470



0 Savannah Highway

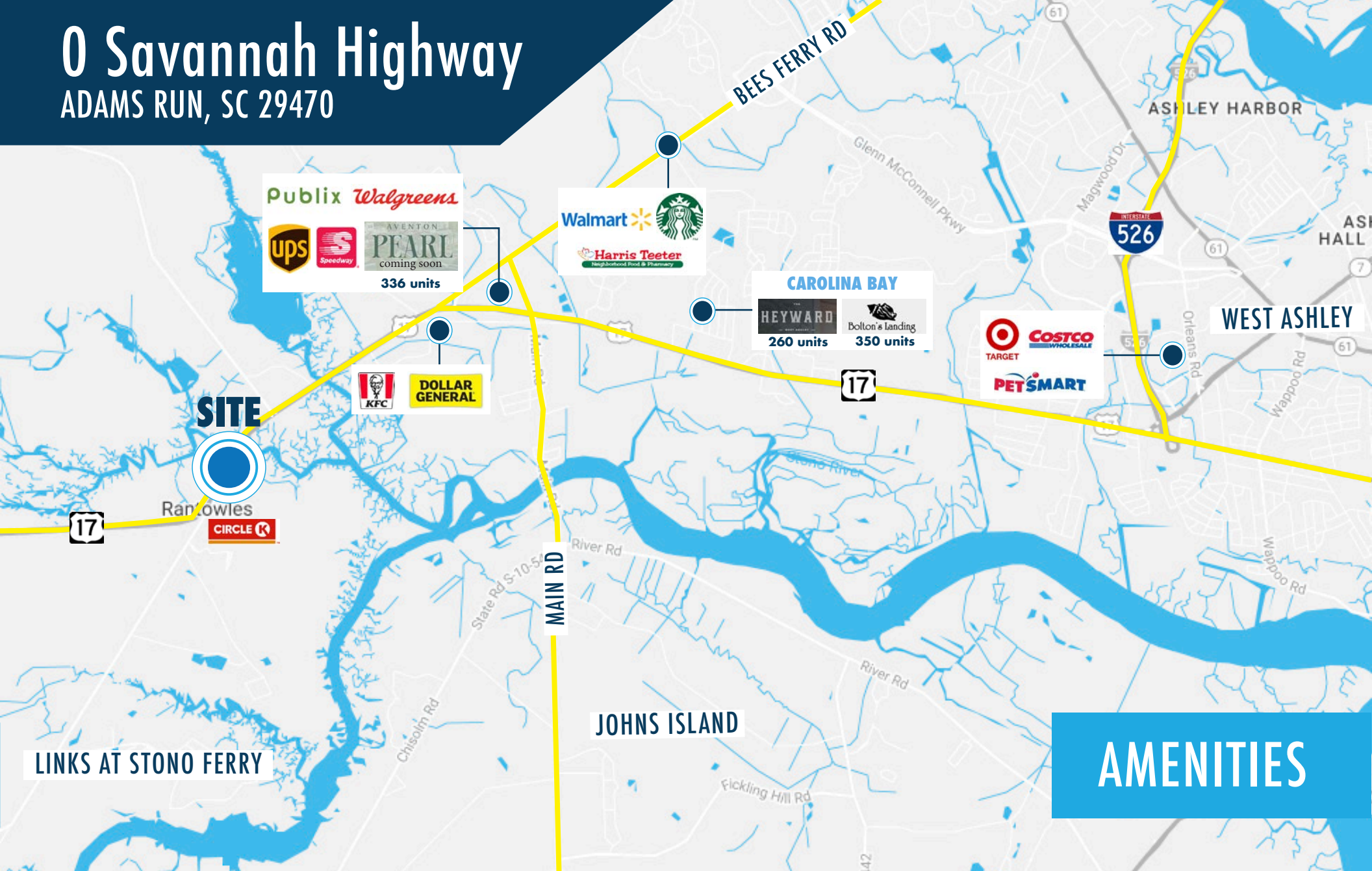
ADAMS RUN, SC 29470



LOCATION

0 Savannah Highway





ADAMS RUN, SC 29470



0 Savannah Highway

ADAMS RUN, SC 29470

DEMOGRAPHICS

	THREE MILE	FIVE MILE	TEN MILE
 POPULATION	30,457	85,182	283,712
 TOTAL BUSINESSES	1,428	4,124	17,266
 MEDIAN AGE	39.9	40.4	38.4
 AVG HOUSEHOLD INCOME	\$99,290	\$93,660	\$88,955

Contact:



Contact us:

146 Williman Street, Units 300 & 400
Charleston, SC 29403

www.harborcommercialpartners.com

+1.843.994.7198



Taylor Sekanovich

Senior Associate

+1.843.812.8407

taylor.sekanovich@harborcommercialpartners.com